

## Photometric / Colorimetric / Electric Report

Fixture Model:

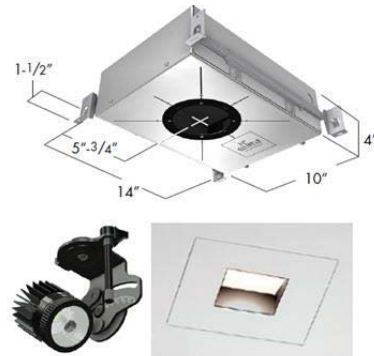
**804S-J2S-TW-40-3000K-EL3-8-700-FS-P-1-WH-WW-8-20d**

Trim Model:

**FS-P-1-WH-WW-8**

Date:

**8/19/2020**



Light efficiency:

**40 Lumen/Watt**

Light quality:

**CRI: 95.8**

Color temperature:

**2984 K**

CIE 1931:

**x: 0.431  
y: 0.390**

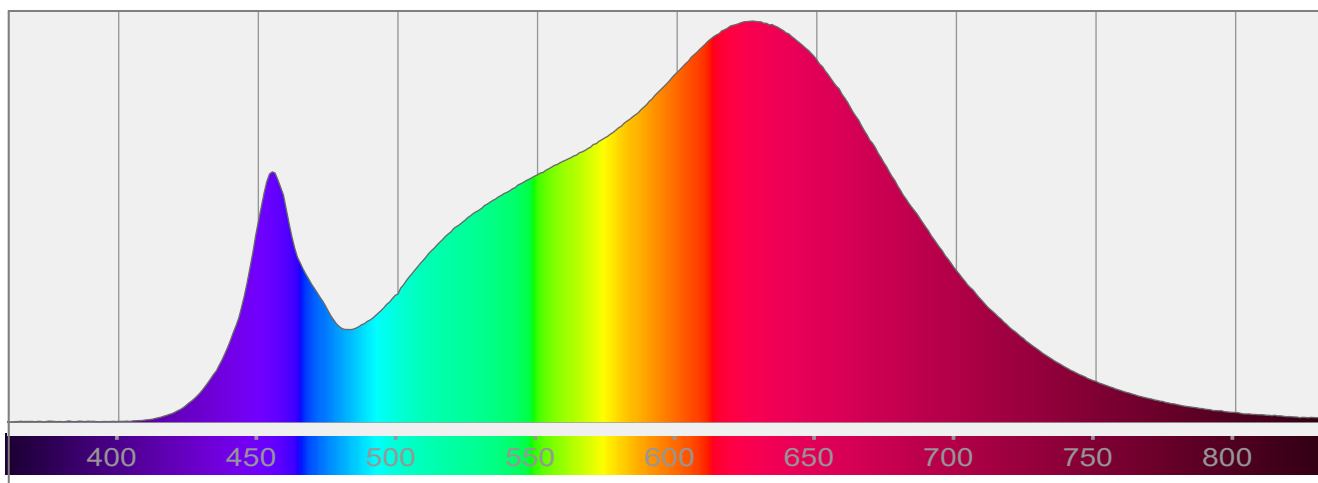
**Output: 568 lm**

**Peak: 382 cd**

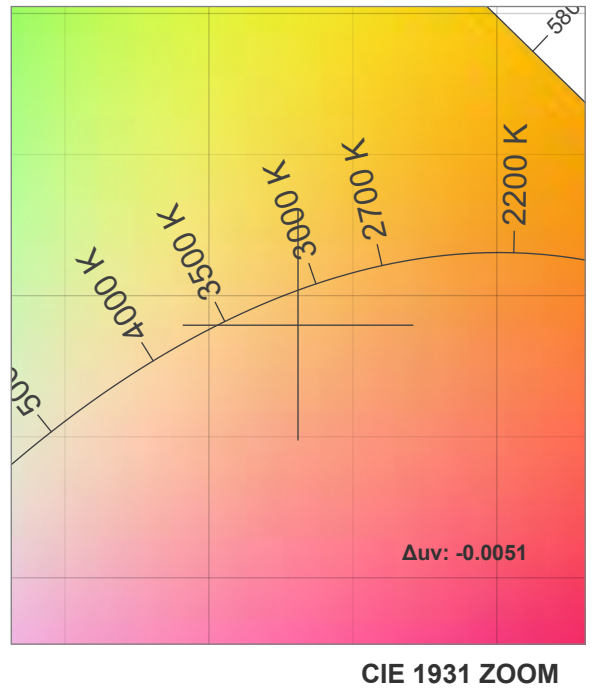
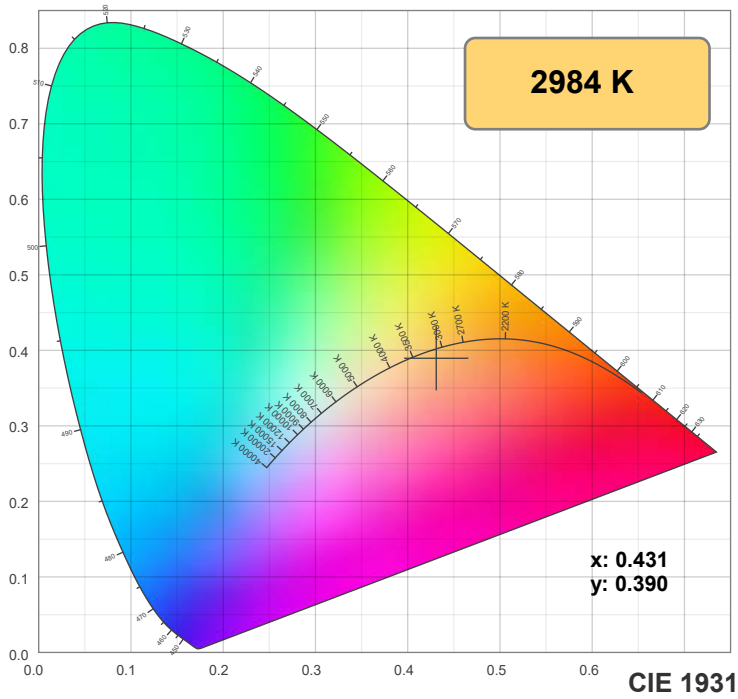
**Power: 14.2 W**

**PF: 0.99**

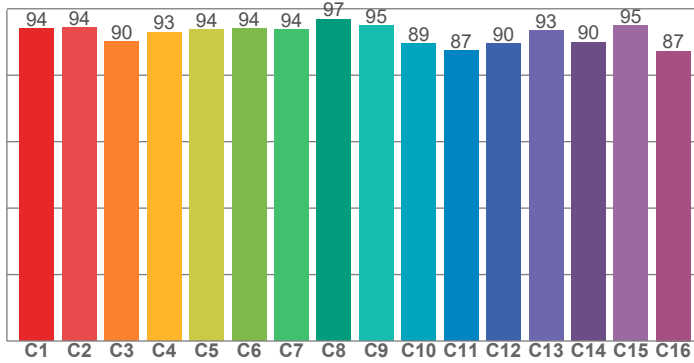
Spectra:



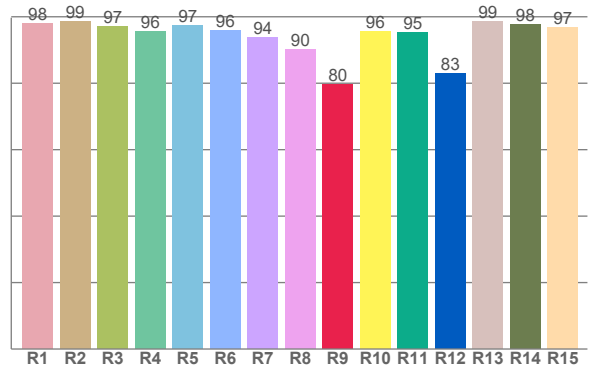
## Color Details



**TM-30: 92.2**



**CRI: 95.8 (R1-R8)**



**CRI R Values:**

R1	R2	R3	R4	R5	R6	R7	R8	R9	R10	R11	R12	R13	R14	R15
97.9	98.5	97.1	95.7	97.3	95.8	93.8	90.2	79.6	95.7	95.3	83.1	98.6	97.6	96.7

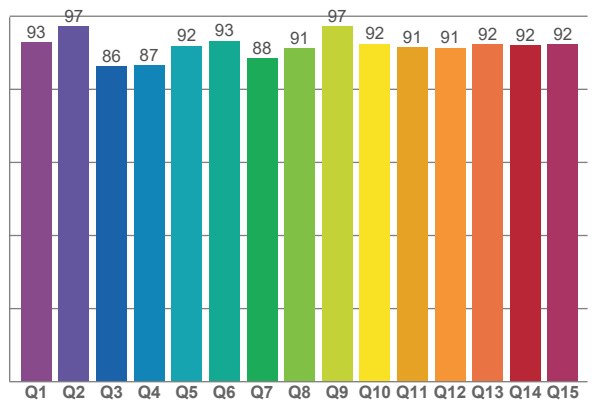
**TM30 C Values:**

C1	C2	C3	C4	C5	C6	C7	C8	C9	C10	C11	C12	C13	C14	C15	C16
94.1	94.2	90.2	93.0	93.7	94.0	93.7	96.9	94.9	89.5	87.5	89.5	93.3	90.0	94.9	87.3

**CQS Q values:**

Q1	Q2	Q3	Q4	Q5	Q6	Q7	Q8	Q9	Q10	Q11	Q12	Q13	Q14	Q15
92.9	97.2	86.3	86.6	91.9	93.3	88.4	91.2	97.2	92.5	91.5	91.4	92.2	92.0	92.3

**CQS: 91.2**



**Color Parameters:**

CCT	CRI	CRI R9	TM30 Rf	TM30 Rg	CQS	x	y	u	v	Δuv
2984 K	95.8	79.6	92.2	101.9	91.2	0.431	0.390	0.253	0.343	-0.0051

# TM-30 Details

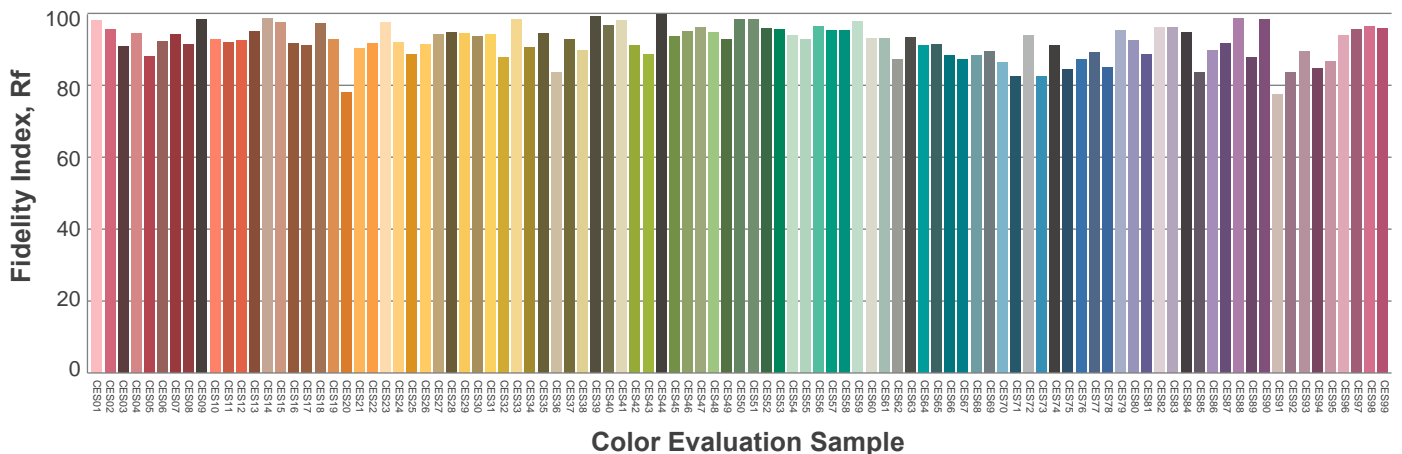
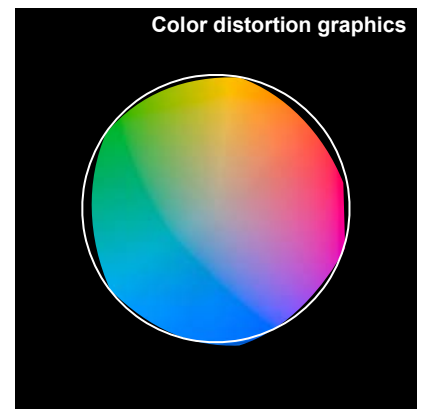
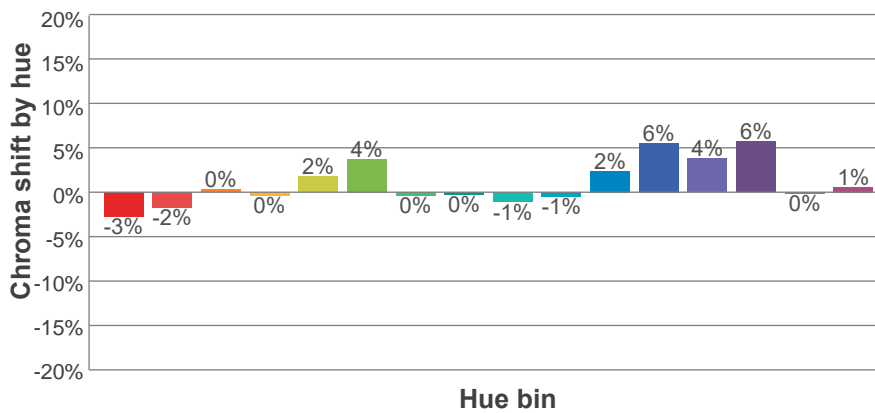
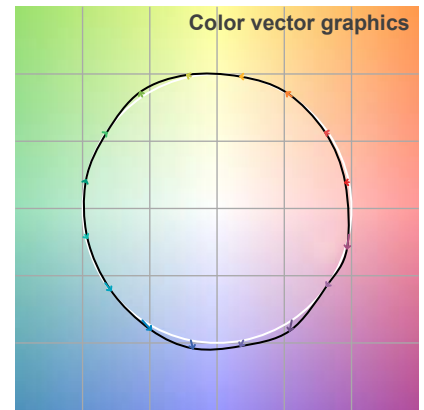
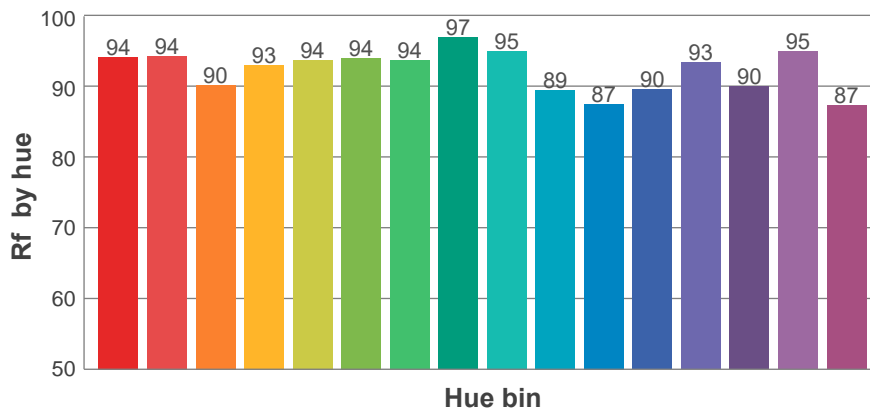
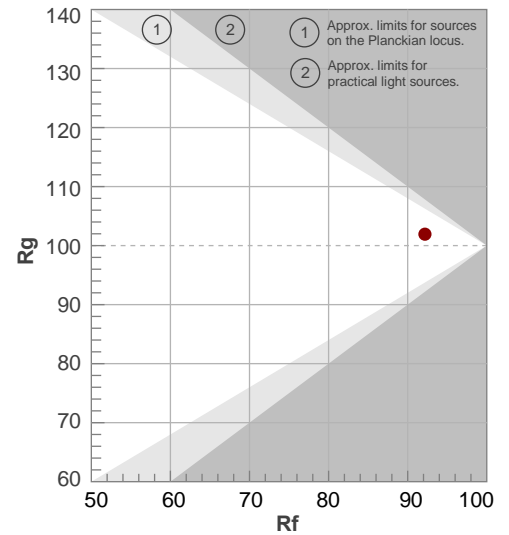
**Rf 92.2**

Fidelity index Rf

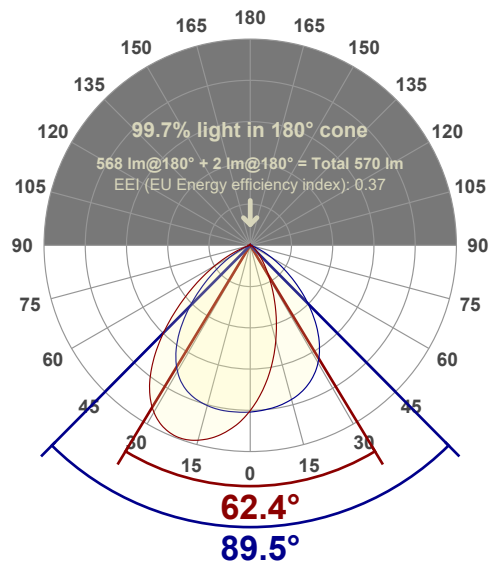
**Rg 101.9**

Gamut index Rg

Hue Bin	R <sub>f</sub>	Shifts (%)	
		Chroma	Hue
1	94	-3%	0%
2	94	-2%	2%
3	90	0%	5%
4	93	0%	2%
5	94	2%	3%
6	94	4%	0%
7	94	0%	-1%
8	97	0%	-2%
9	95	-1%	3%
10	89	-1%	7%
11	87	2%	9%
12	90	6%	3%
13	93	4%	-3%
14	90	6%	-6%
15	95	0%	-3%
16	87	1%	-10%



## Angular Distribution Through 0° and 90° Planes



**Beam Angle: 89.5°W x 62.4°L**

## Beam Details

