

## Photometric / Colorimetric / Electric Report

Fixture Model:

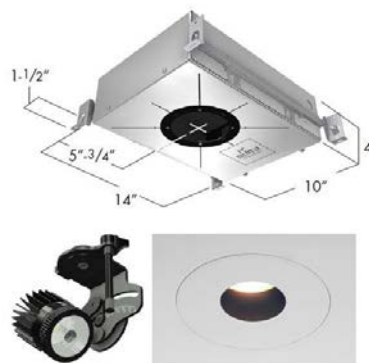
804S-J2S-TW-25-4700K-EL3-8-700-FR-P-1-WH

Trim Model:

FR-P-1-WH

Date:

1/18/2022



Light efficiency:

49 Lumen/Watt

Light quality:

CRI: 91.8

Color temperature:

4772 K

CIE 1931:

x: 0.353  
y: 0.362

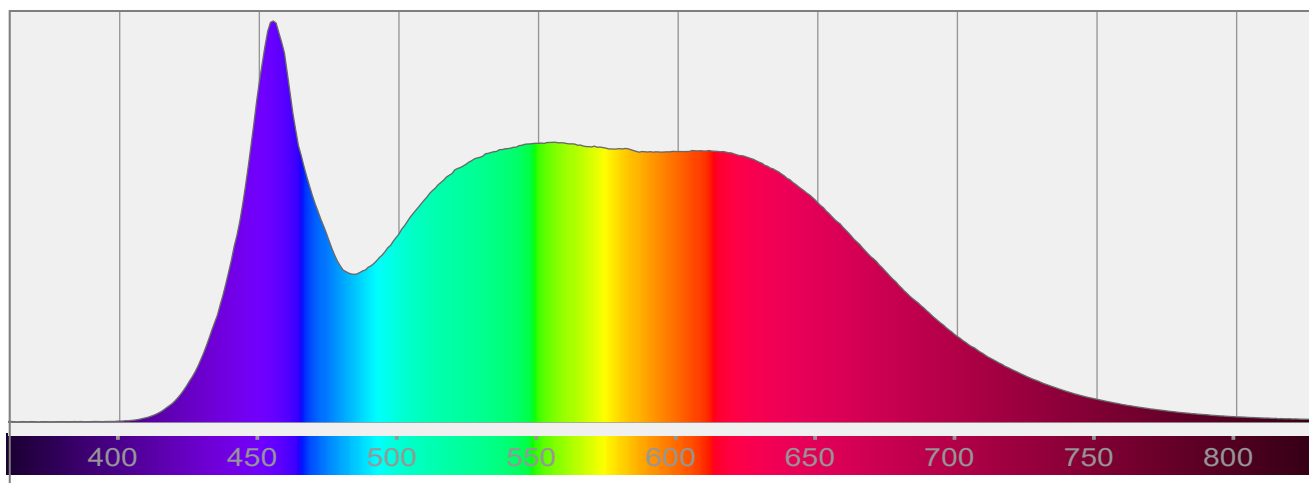
Output: 708 lm

Peak: 2730 cd

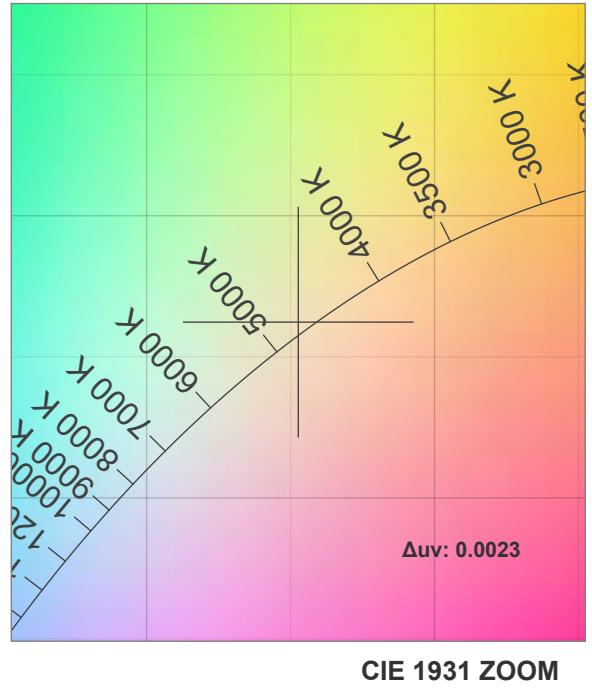
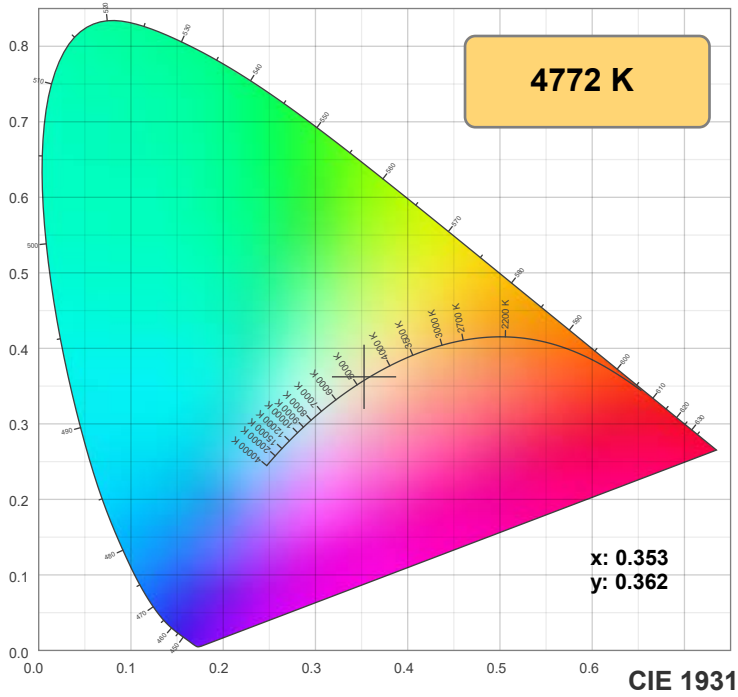
Power: 14.5 W

PF: 0.99

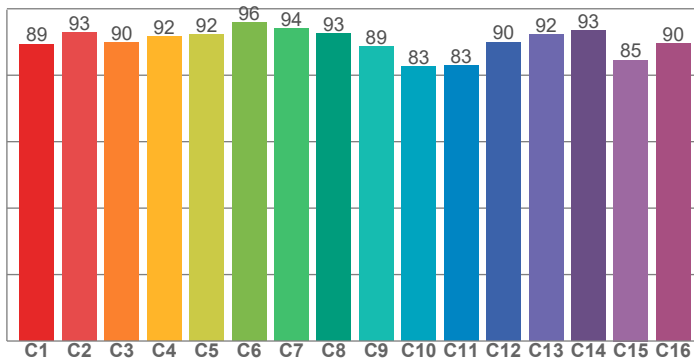
Spectra:



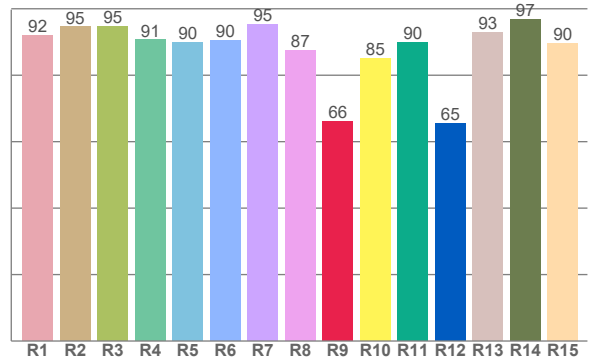
## Color Details



**TM-30: 90.0**



**CRI: 91.8 (R1-R8)**



**CRI R Values:**

R1	R2	R3	R4	R5	R6	R7	R8	R9	R10	R11	R12	R13	R14	R15
91.8	94.5	94.7	90.6	89.9	90.3	95.4	87.5	66.0	85.0	89.7	65.5	92.8	96.8	89.7

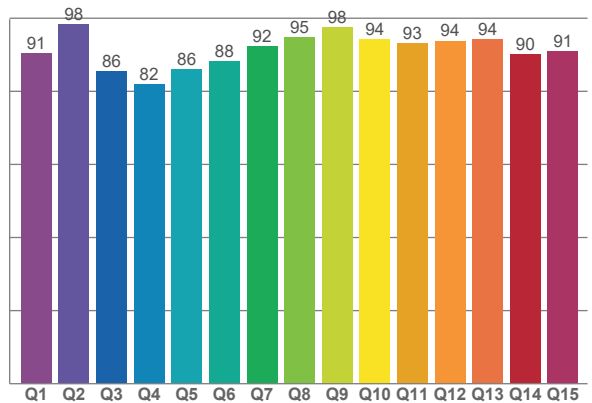
**TM30 C Values:**

C1	C2	C3	C4	C5	C6	C7	C8	C9	C10	C11	C12	C13	C14	C15	C16
89.4	92.9	89.9	91.7	92.3	95.8	94.0	92.6	88.6	82.6	82.9	90.0	92.2	93.5	84.6	89.5

**CQS Q values:**

Q1	Q2	Q3	Q4	Q5	Q6	Q7	Q8	Q9	Q10	Q11	Q12	Q13	Q14	Q15
90.5	98.4	85.5	81.9	86.1	88.3	92.2	94.8	97.6	94.3	93.0	93.8	94.3	90.2	91.0

**CQS: 90.4**



**Color Parameters:**

CCT	CRI	CRI R9	TM30 Rf	TM30 Rg	CQS	x	y	u	v	Δuv
4772 K	91.8	66.0	90.0	98.1	90.4	0.353	0.362	0.212	0.327	0.0023

# TM-30 Details

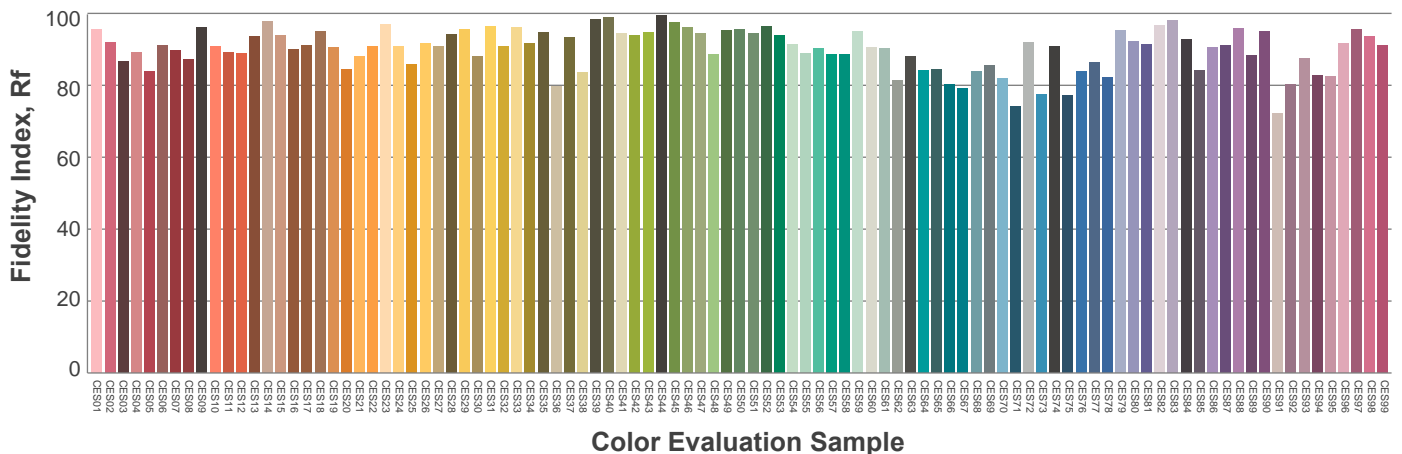
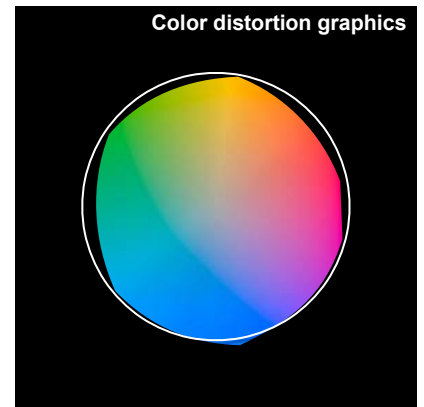
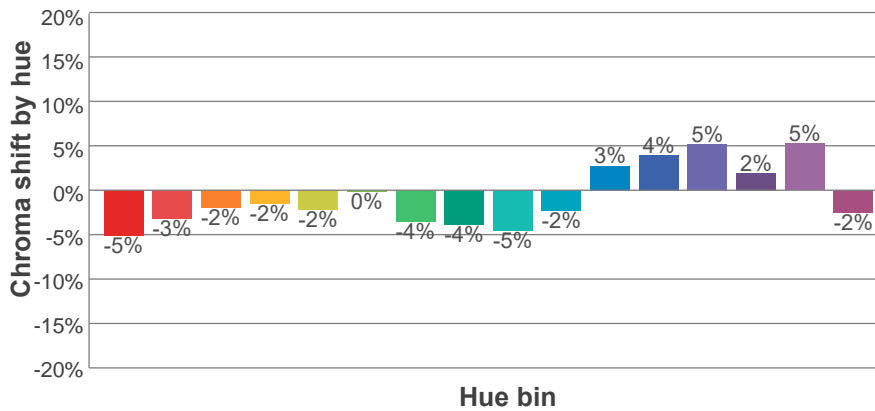
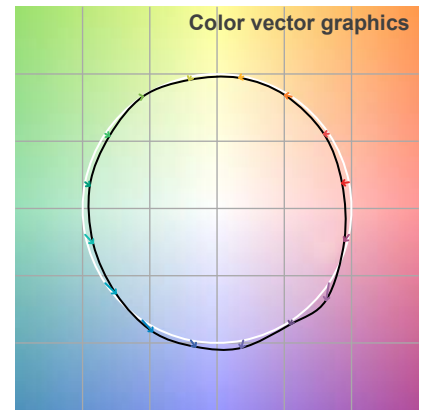
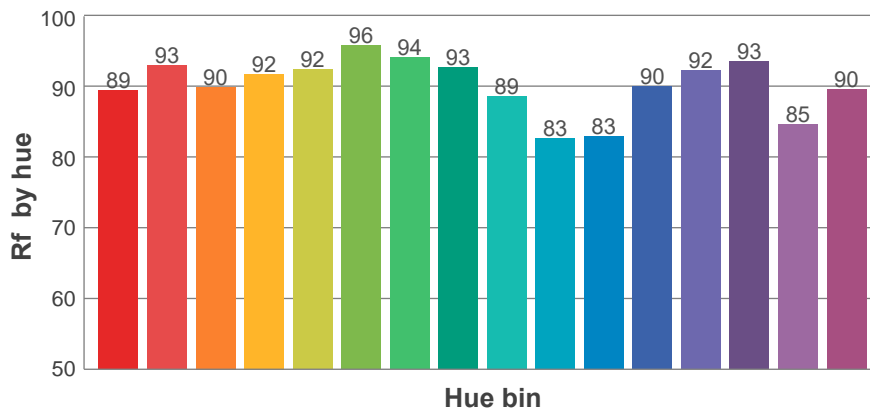
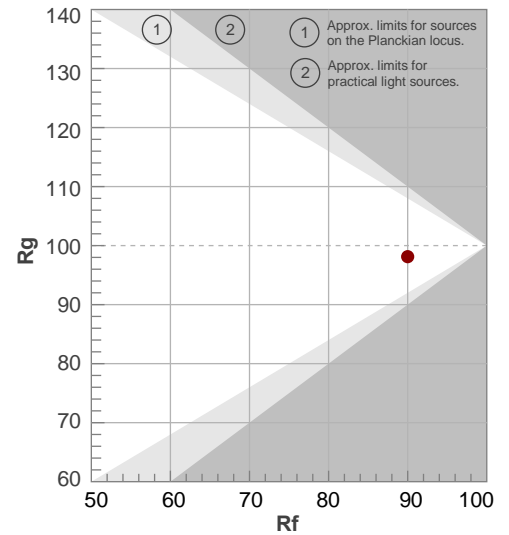
**Rf 90.0**

Fidelity index Rf

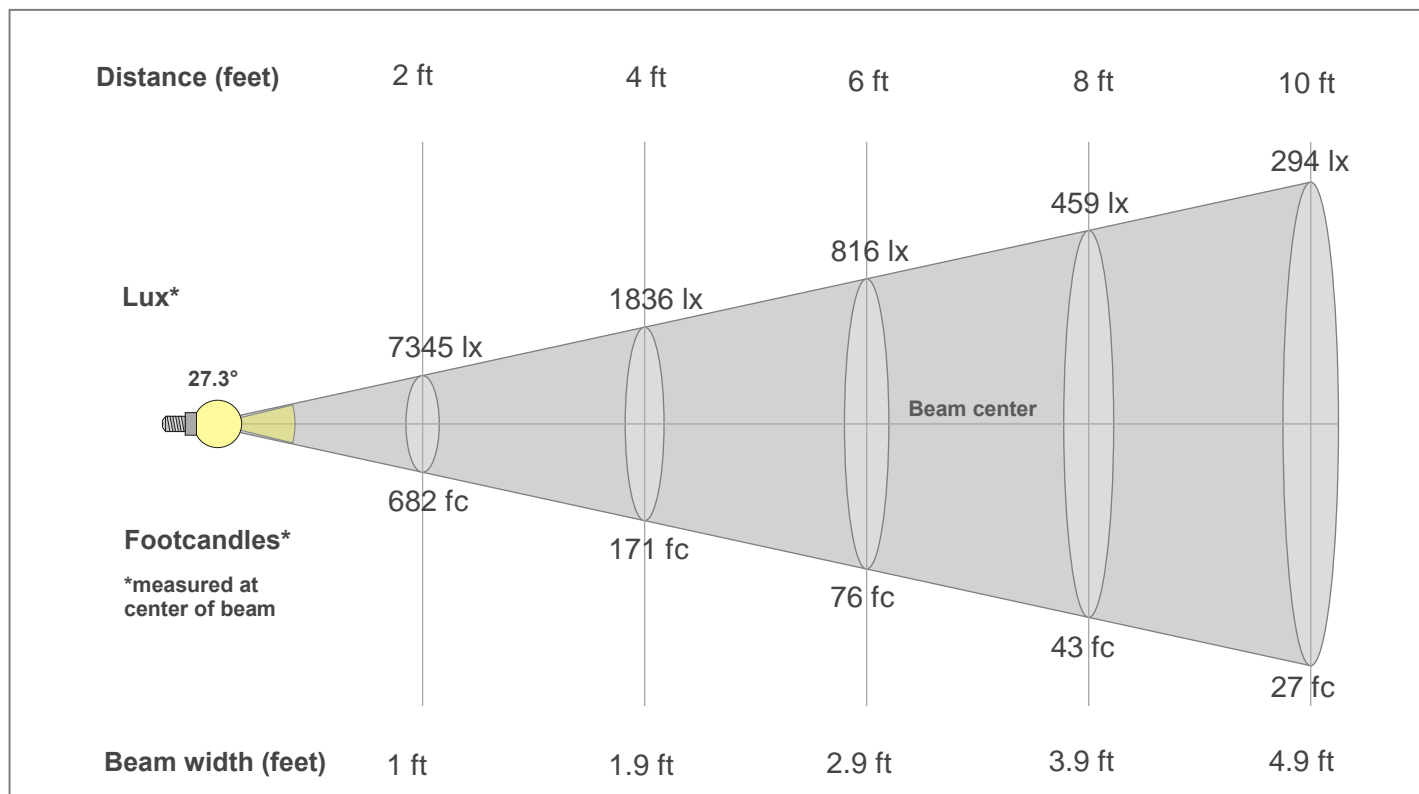
**Rg 98.1**

Gamut index Rg

Hue Bin	R <sub>f</sub>	Shifts (%)	
		Chroma	Hue
1	89	-5%	0%
2	93	-3%	2%
3	90	-2%	5%
4	92	-2%	3%
5	92	-2%	2%
6	96	0%	0%
7	94	-4%	0%
8	93	-4%	2%
9	89	-5%	7%
10	83	-2%	11%
11	83	3%	11%
12	90	4%	4%
13	92	5%	-3%
14	93	2%	-3%
15	85	5%	-12%
16	90	-2%	-5%



## Beam Details



### Beam Intensities from 1-20m

1m	2m	3m	4m	5m	6m	7m	8m	9m	10m	11m	12m	13m	14m	15m	16m	17m	18m	19m	20m
3.3ft	6.6ft	9.8ft	13.1ft	16.4ft	19.7ft	23ft	26.2ft	29.5ft	32.8ft	36.1ft	39.4ft	42.7ft	45.9ft	49.2ft	52.5ft	55.8ft	59.1ft	62.3ft	65.6ft
2730lx	682lx	303lx	171lx	109lx	76lx	56lx	43lx	34lx	27lx	23lx	19lx	16lx	14lx	12lx	11lx	9lx	8lx	8lx	7lx
253.6fc	63.4fc	28.2fc	15.8fc	10.1fc	7fc	5.2fc	4fc	3.1fc	2.5fc	2.1fc	1.8fc	1.5fc	1.3fc	1.1fc	1fc	0.9fc	0.8fc	0.7fc	0.6fc

### Intensities in 0° c-plane

0°	2°	4°	6°	8°	10°	12°	14°	16°	18°	20°	22°	24°	26°	28°	30°	32°	34°	36°	38°
2730	2696	2573	2380	2141	1871	1591	1316	1061	839	653	491	357	244	158	96	56	31	18	11
100%	99%	94%	87%	78%	69%	58%	48%	39%	31%	24%	18%	13%	9%	6%	4%	2%	1%	1%	0%

### Intensities in 90° c-plane

0°	2°	4°	6°	8°	10°	12°	14°	16°	18°	20°	22°	24°	26°	28°	30°	32°	34°	36°	38°
2730	2696	2573	2380	2141	1871	1591	1316	1061	839	653	491	357	244	158	96	56	31	18	11
100%	99%	94%	87%	78%	69%	58%	48%	39%	31%	24%	18%	13%	9%	6%	4%	2%	1%	1%	0%

### Intensities in 180° c-plane

0°	2°	4°	6°	8°	10°	12°	14°	16°	18°	20°	22°	24°	26°	28°	30°	32°	34°	36°	38°
2730	2696	2573	2380	2141	1871	1591	1316	1061	839	653	491	357	244	158	96	56	31	18	11
100%	99%	94%	87%	78%	69%	58%	48%	39%	31%	24%	18%	13%	9%	6%	4%	2%	1%	1%	0%

### Intensities in 270° c-plane

0°	2°	4°	6°	8°	10°	12°	14°	16°	18°	20°	22°	24°	26°	28°	30°	32°	34°	36°	38°
2730	2696	2573	2380	2141	1871	1591	1316	1061	839	653	491	357	244	158	96	56	31	18	11
100%	99%	94%	87%	78%	69%	58%	48%	39%	31%	24%	18%	13%	9%	6%	4%	2%	1%	1%	0%

Beam angle 50%	Field angle 10%	Cut-off angle 2.5%	Intensity ratio in 120°	Intensity ratio in 90°
27.3°	50.9°	62.6°	99.6%	99.4%