

Photometric / Colorimetric / Electric Report

Fixture Model:

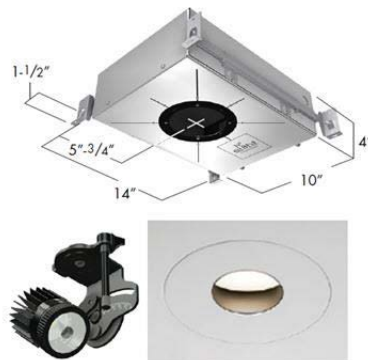
**804S-J2S-TW-40-3000K-EL3-8-700-FR-P-1-WH-
WW-8-20d**

Trim Model:

FR-P-1-WH-WW-8

Date:

8/19/2020



Light efficiency:

37 Lumen/Watt

Light quality:

CRI: 95.7

Color temperature:

2975 K

CIE 1931:

**x: 0.432
y: 0.390**

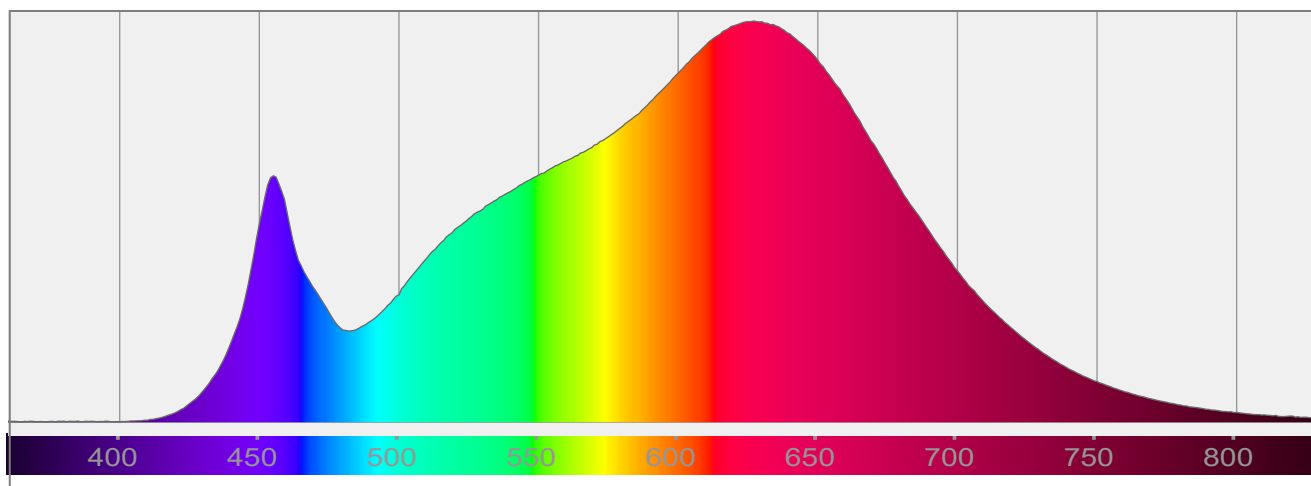
Output: 522 lm

Peak: 373 cd

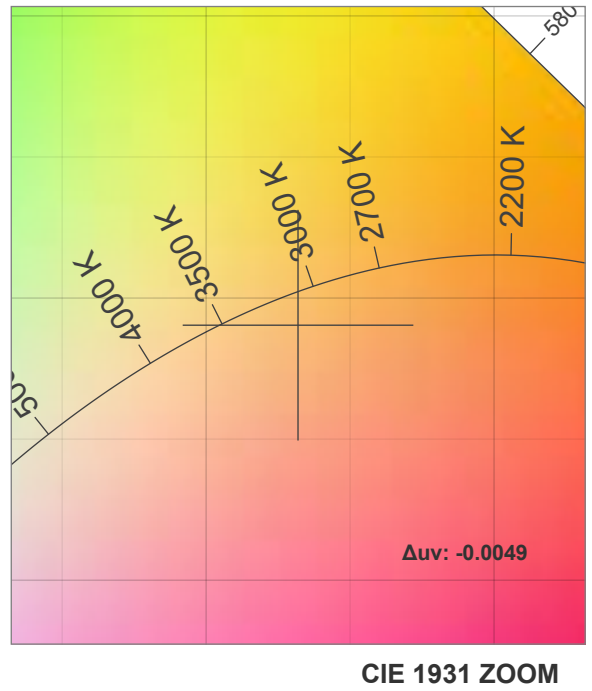
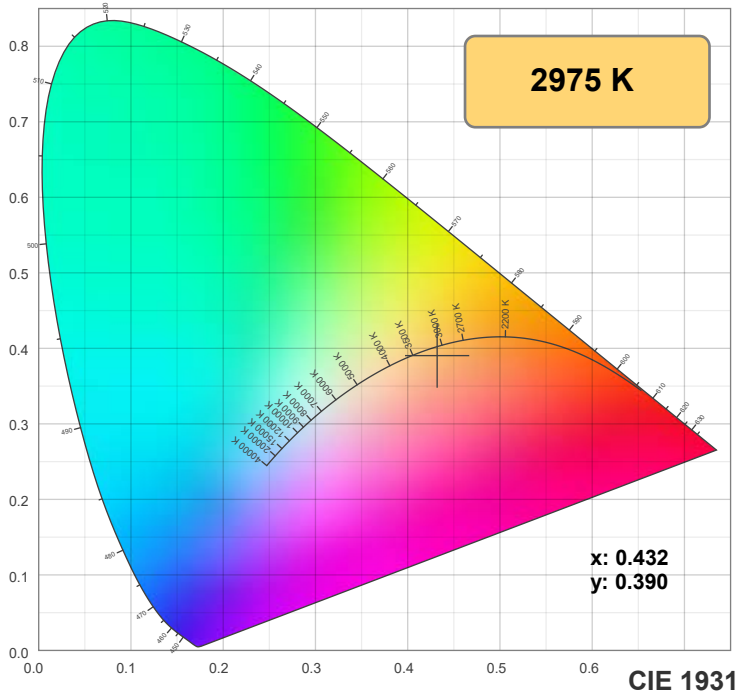
Power: 14.2 W

PF: 0.99

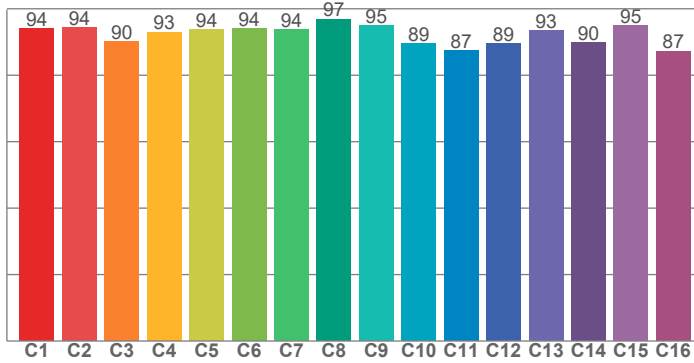
Spectra:



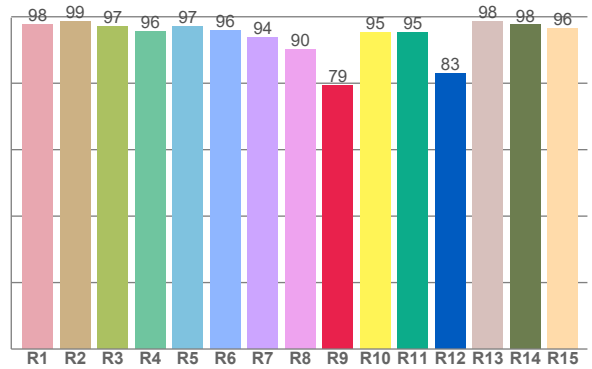
Color Details



TM-30: 92.2



CRI: 95.7 (R1-R8)



CRI R Values:

R1	R2	R3	R4	R5	R6	R7	R8	R9	R10	R11	R12	R13	R14	R15
97.8	98.5	97.0	95.6	97.1	95.9	93.9	90.1	79.3	95.4	95.3	83.0	98.5	97.5	96.5

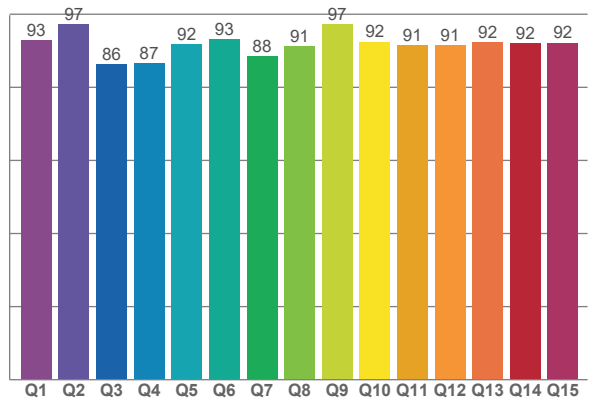
TM30 C Values:

C1	C2	C3	C4	C5	C6	C7	C8	C9	C10	C11	C12	C13	C14	C15	C16
94.0	94.2	90.1	93.0	93.7	94.0	93.7	96.9	95.0	89.5	87.5	89.5	93.3	89.9	94.8	87.3

CQS Q values:

Q1	Q2	Q3	Q4	Q5	Q6	Q7	Q8	Q9	Q10	Q11	Q12	Q13	Q14	Q15
92.8	97.2	86.3	86.6	91.9	93.2	88.5	91.2	97.2	92.5	91.5	91.4	92.3	92.0	92.2

CQS: 91.2



Color Parameters:

CCT	CRI	CRI R9	TM30 Rf	TM30 Rg	CQS	x	y	u	v	Δuv
2975 K	95.7	79.3	92.2	101.9	91.2	0.432	0.390	0.253	0.343	-0.0049

TM-30 Details

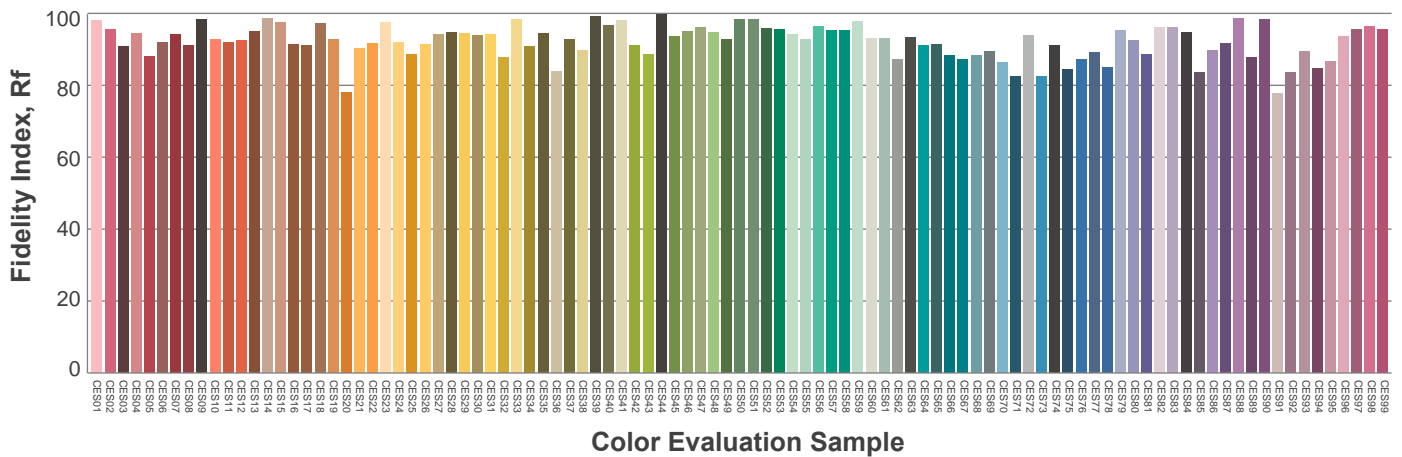
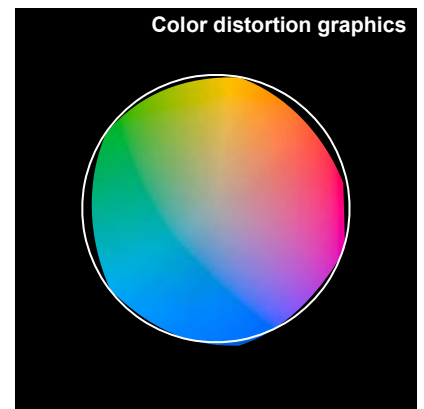
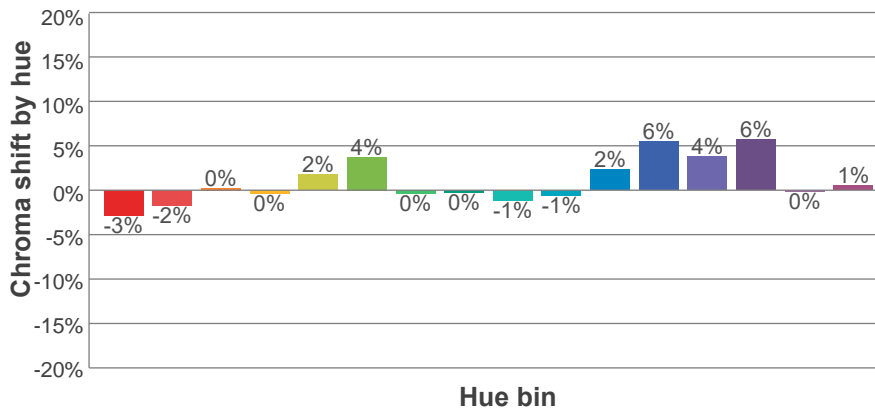
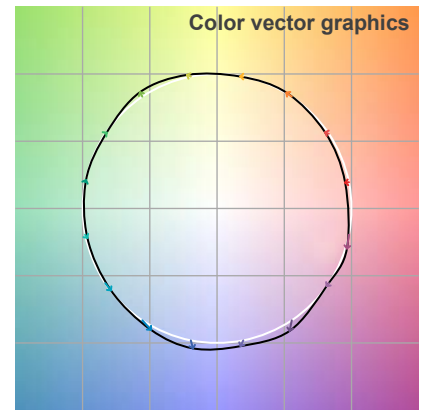
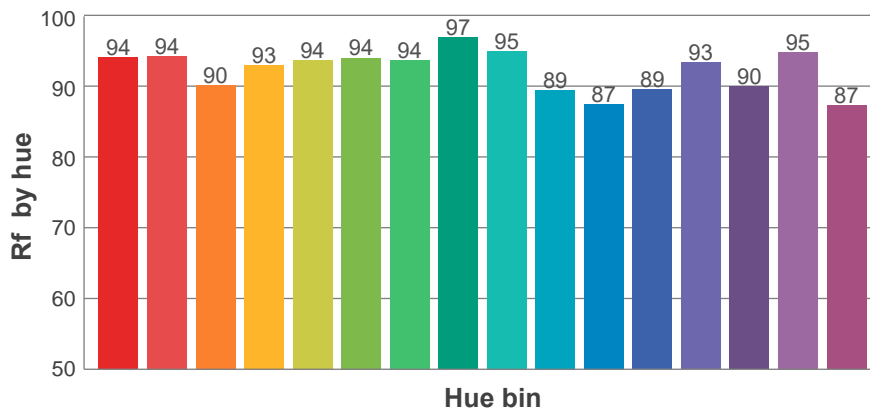
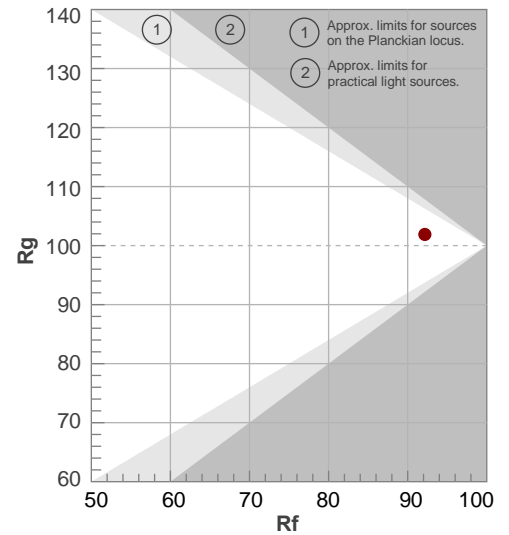
Rf 92.2

Fidelity index Rf

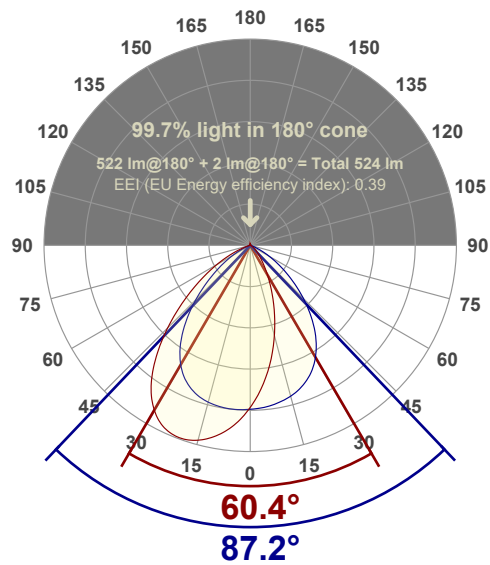
Rg 101.9

Gamut index Rg

Hue Bin	R _f	Shifts (%)	
		Chroma	Hue
1	94	-3%	0%
2	94	-2%	2%
3	90	0%	5%
4	93	0%	2%
5	94	2%	3%
6	94	4%	0%
7	94	0%	-1%
8	97	0%	-2%
9	95	-1%	3%
10	89	-1%	7%
11	87	2%	9%
12	89	6%	3%
13	93	4%	-3%
14	90	6%	-6%
15	95	0%	-3%
16	87	1%	-10%



Angular Distribution Through 0° and 90° Planes



Beam Angle: 87.2°W x 60.4°L

Beam Details

