

## Photometric / Colorimetric / Electric Report

Fixture Model:

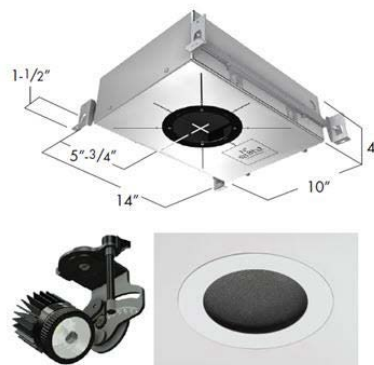
804S-J2S-TW-15T-4700K-EL3-8-700-FR-LG-P-1-WH-NL

Trim Model:

FR-LG-P-1-WH/NL

Date:

1/18/2022



Light efficiency:

70 Lumen/Watt

Light quality:

CRI: 91.5

Color temperature:

4686 K

CIE 1931:

x: 0.356  
y: 0.365

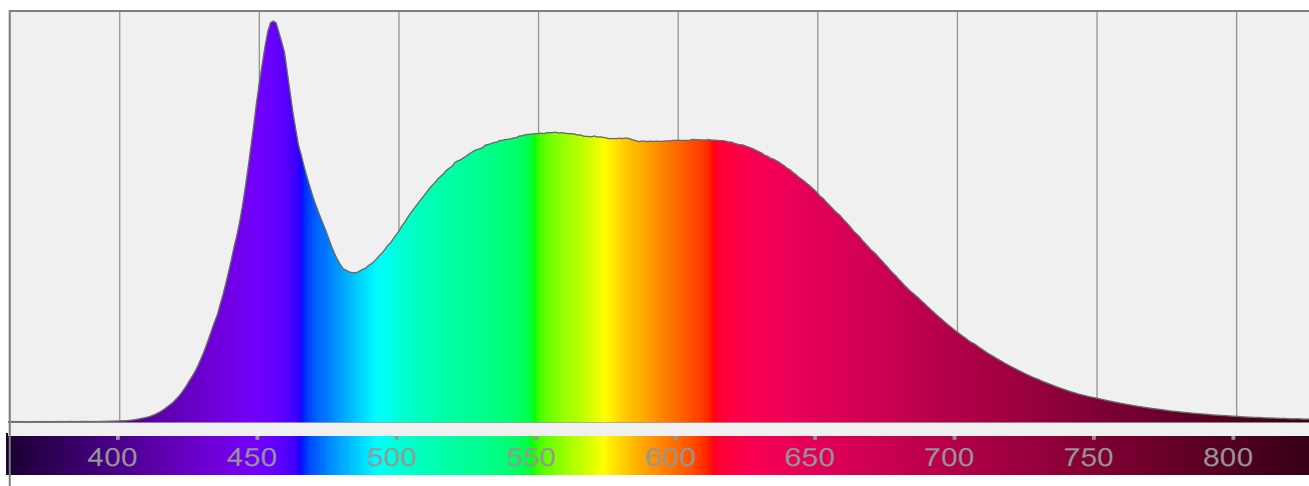
Output: 1018 lm

Peak: 6216 cd

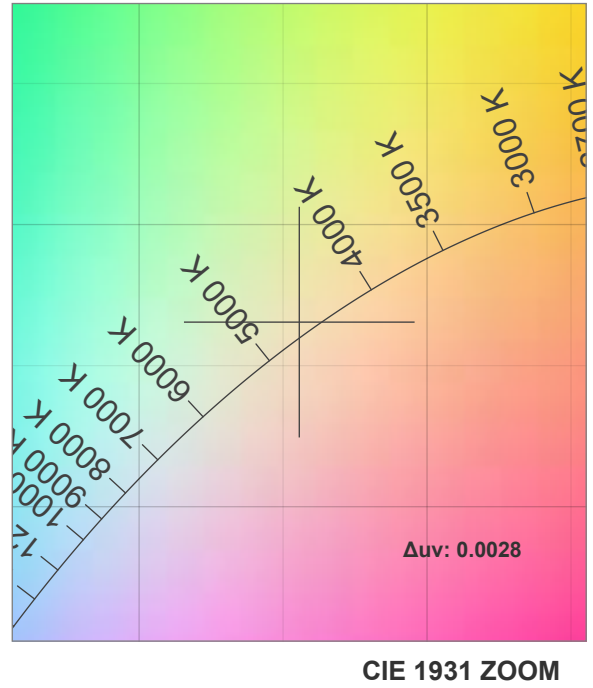
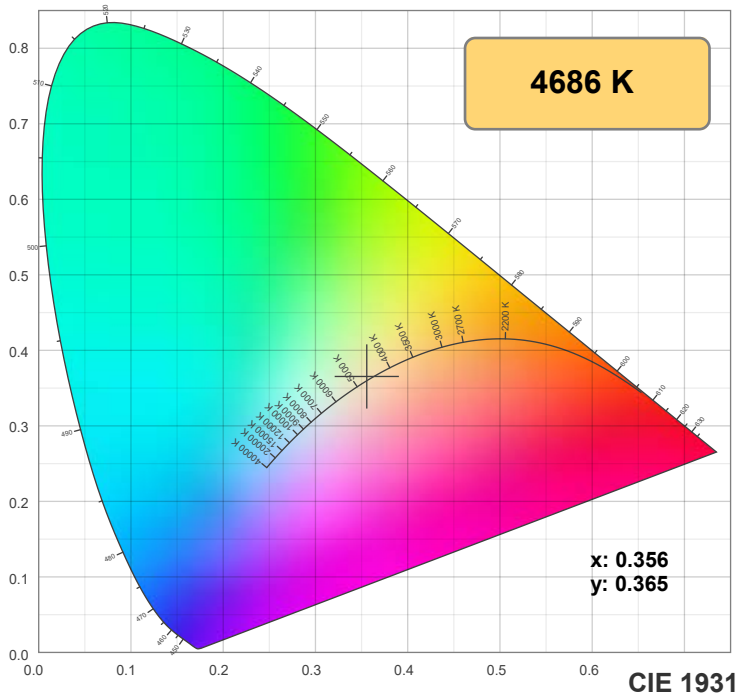
Power: 14.5 W

PF: 0.99

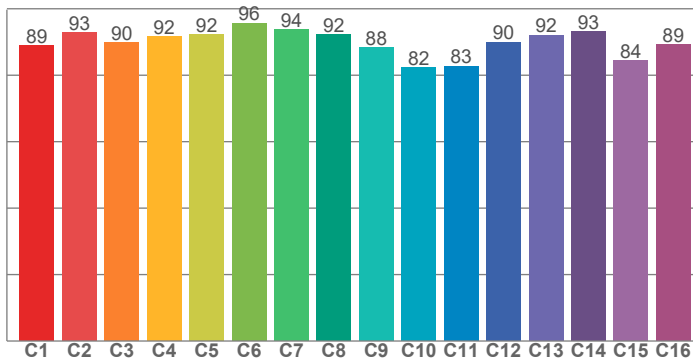
Spectra:



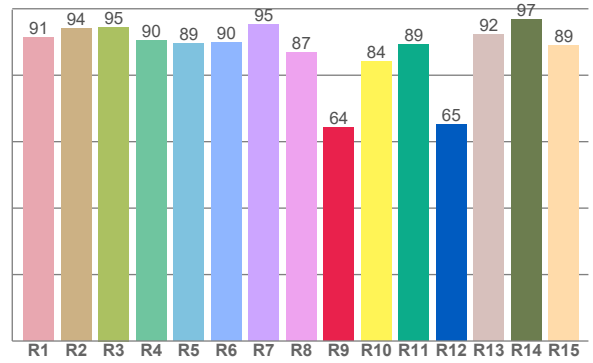
## Color Details



**TM-30: 89.8**



**CRI: 91.5 (R1-R8)**



**CRI R Values:**

R1	R2	R3	R4	R5	R6	R7	R8	R9	R10	R11	R12	R13	R14	R15
91.4	94.1	94.5	90.4	89.5	90.0	95.4	86.9	64.4	84.2	89.3	65.2	92.2	96.7	89.1

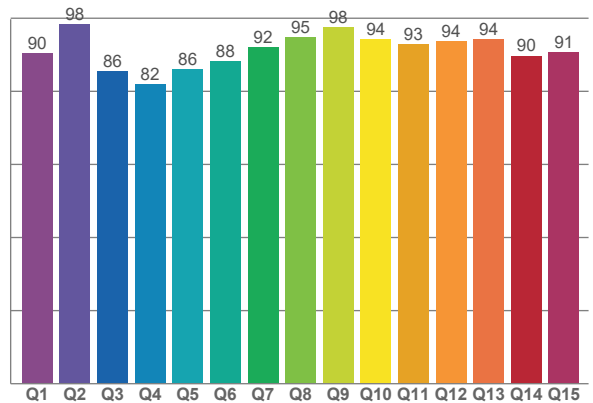
**TM30 C Values:**

C1	C2	C3	C4	C5	C6	C7	C8	C9	C10	C11	C12	C13	C14	C15	C16
89.0	92.7	89.8	91.6	92.2	95.7	93.8	92.4	88.3	82.3	82.8	90.0	92.1	93.3	84.3	89.2

**CQS Q values:**

Q1	Q2	Q3	Q4	Q5	Q6	Q7	Q8	Q9	Q10	Q11	Q12	Q13	Q14	Q15
90.4	98.4	85.5	82.0	86.1	88.1	91.9	94.7	97.6	94.2	93.0	93.7	94.2	89.7	90.6

**CQS: 90.3**



**Color Parameters:**

CCT	CRI	CRI R9	TM30 Rf	TM30 Rg	CQS	x	y	u	v	Δuv
4686 K	91.5	64.4	89.8	97.9	90.3	0.356	0.365	0.213	0.329	0.0028

# TM-30 Details

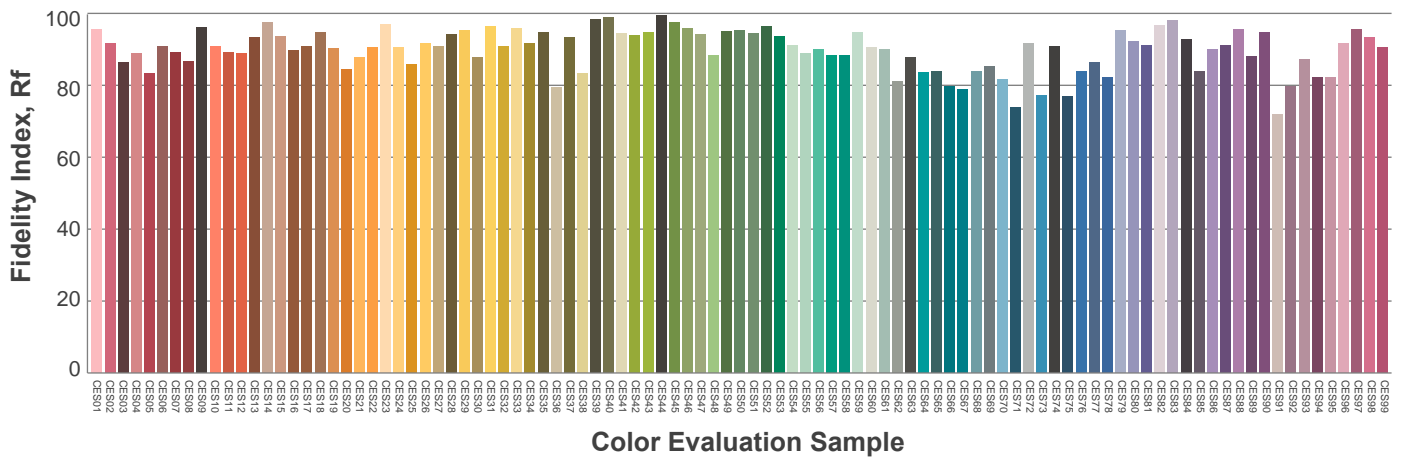
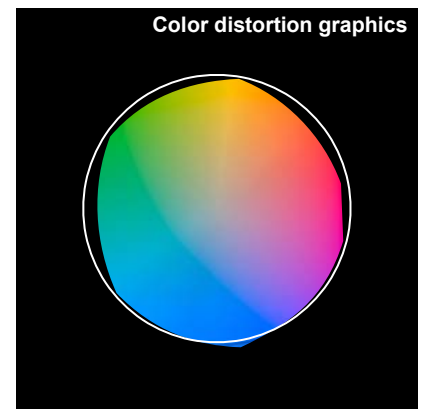
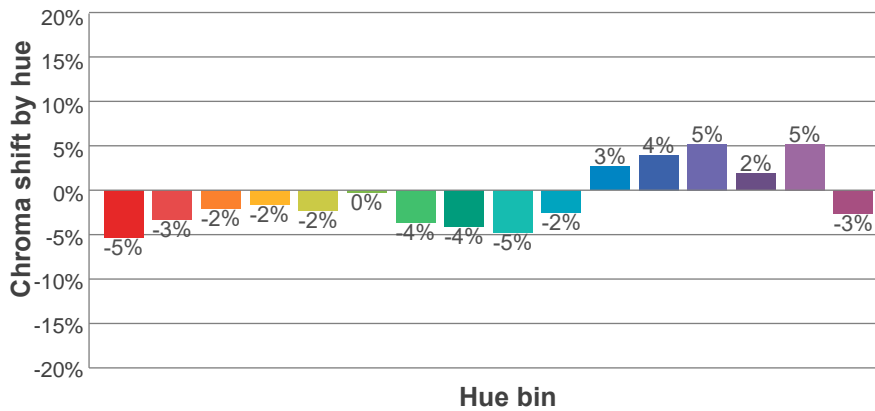
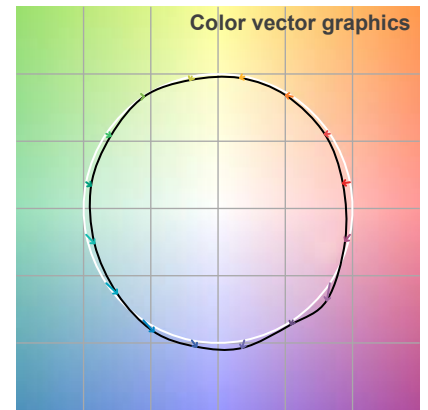
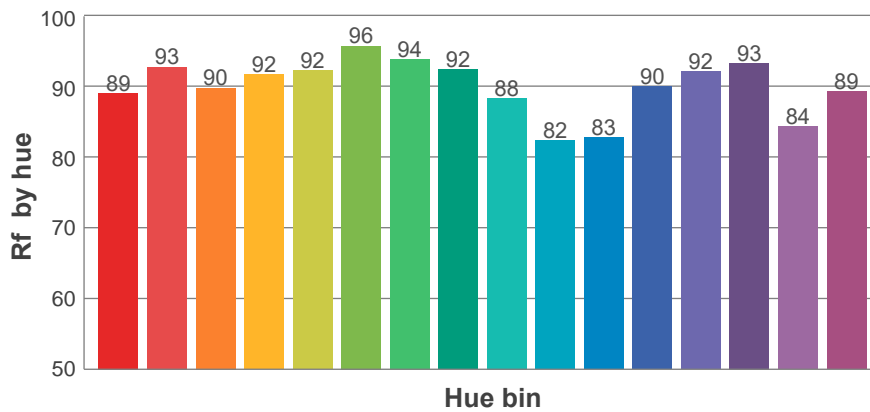
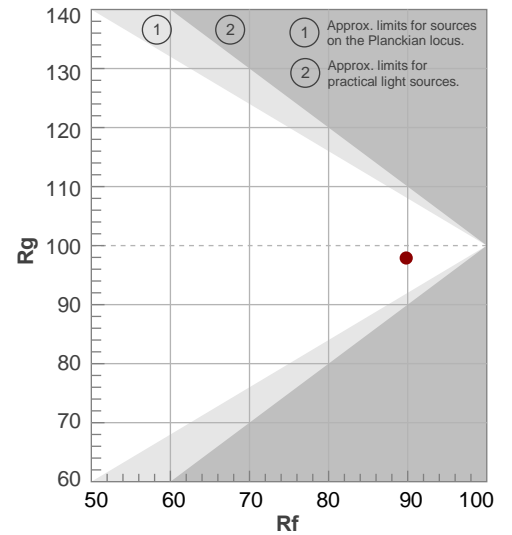
**Rf 89.8**

Fidelity index Rf

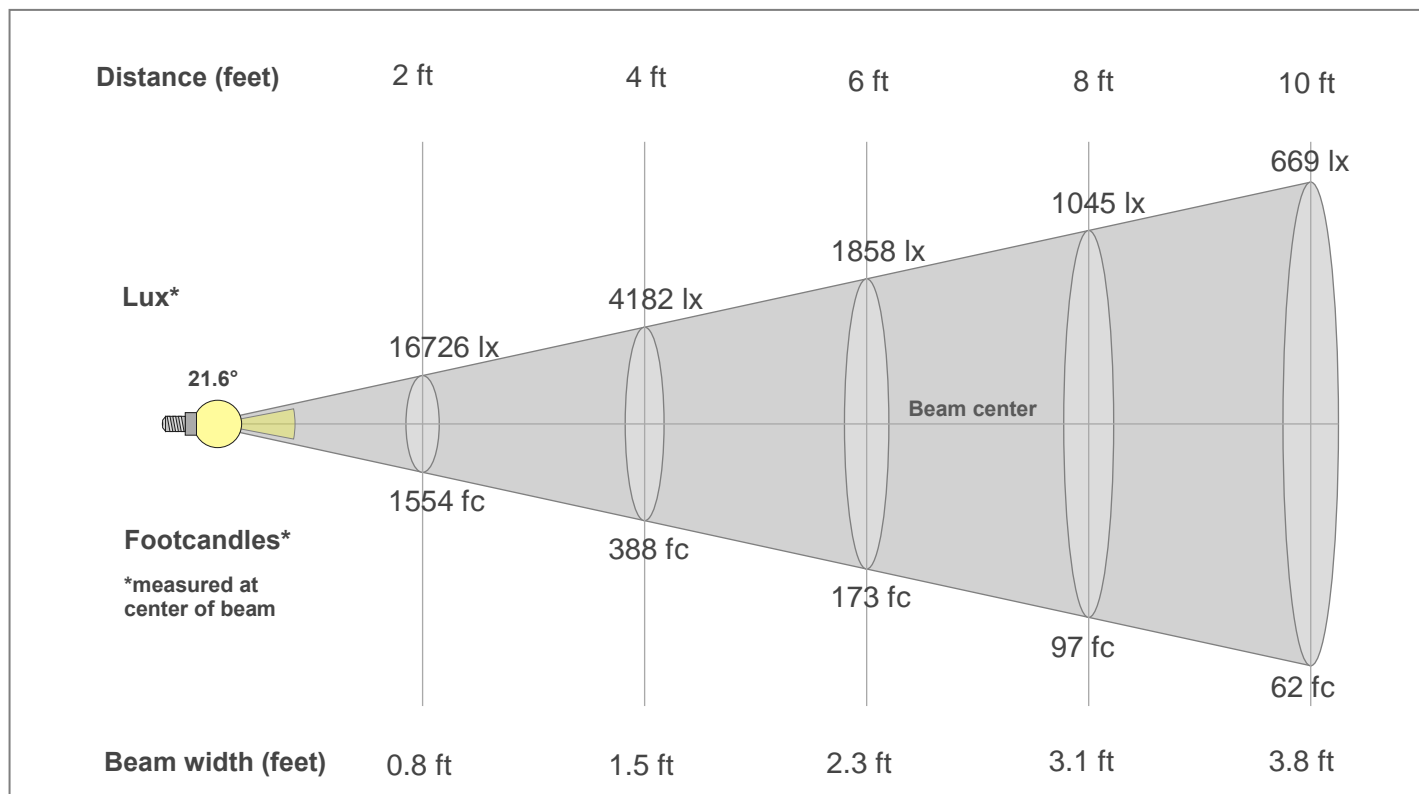
**Rg 97.9**

Gamut index Rg

Hue Bin	R <sub>f</sub>	Shifts (%)	
		Chroma	Hue
1	89	-5%	0%
2	93	-3%	2%
3	90	-2%	5%
4	92	-2%	3%
5	92	-2%	2%
6	96	0%	0%
7	94	-4%	0%
8	92	-4%	2%
9	88	-5%	7%
10	82	-2%	11%
11	83	3%	11%
12	90	4%	4%
13	92	5%	-3%
14	93	2%	-3%
15	84	5%	-12%
16	89	-3%	-5%



## Beam Details



### Beam Intensities from 1-20m

1m	2m	3m	4m	5m	6m	7m	8m	9m	10m	11m	12m	13m	14m	15m	16m	17m	18m	19m	20m
3.3ft	6.6ft	9.8ft	13.1ft	16.4ft	19.7ft	23ft	26.2ft	29.5ft	32.8ft	36.1ft	39.4ft	42.7ft	45.9ft	49.2ft	52.5ft	55.8ft	59.1ft	62.3ft	65.6ft
6216lx	1554lx	691lx	388lx	249lx	173lx	127lx	97lx	77lx	62lx	51lx	43lx	37lx	32lx	28lx	24lx	22lx	19lx	17lx	16lx
577.4fc	144.4fc	64.2fc	36.1fc	23.1fc	16fc	11.8fc	9fc	7.1fc	5.8fc	4.8fc	4fc	3.4fc	2.9fc	2.6fc	2.3fc	2fc	1.8fc	1.6fc	1.4fc

### Intensities in 0° c-plane

0°	1°	2°	3°	4°	5°	6°	7°	8°	9°	10°	11°	12°	13°	14°	15°	16°	17°	18°	19°
6216	6192	6118	5985	5769	5484	5151	4774	4369	3945	3491	3023	2574	2153	1769	1438	1164	936	748	597
100%	100%	98%	96%	93%	88%	83%	77%	70%	63%	56%	49%	41%	35%	28%	23%	19%	15%	12%	10%

### Intensities in 90° c-plane

0°	1°	2°	3°	4°	5°	6°	7°	8°	9°	10°	11°	12°	13°	14°	15°	16°	17°	18°	19°
6216	6192	6118	5985	5769	5484	5151	4774	4369	3945	3491	3023	2574	2153	1769	1438	1164	936	748	597
100%	100%	98%	96%	93%	88%	83%	77%	70%	63%	56%	49%	41%	35%	28%	23%	19%	15%	12%	10%

### Intensities in 180° c-plane

0°	1°	2°	3°	4°	5°	6°	7°	8°	9°	10°	11°	12°	13°	14°	15°	16°	17°	18°	19°
6216	6192	6118	5985	5769	5484	5151	4774	4369	3945	3491	3023	2574	2153	1769	1438	1164	936	748	597
100%	100%	98%	96%	93%	88%	83%	77%	70%	63%	56%	49%	41%	35%	28%	23%	19%	15%	12%	10%

### Intensities in 270° c-plane

0°	1°	2°	3°	4°	5°	6°	7°	8°	9°	10°	11°	12°	13°	14°	15°	16°	17°	18°	19°
6216	6192	6118	5985	5769	5484	5151	4774	4369	3945	3491	3023	2574	2153	1769	1438	1164	936	748	597
100%	100%	98%	96%	93%	88%	83%	77%	70%	63%	56%	49%	41%	35%	28%	23%	19%	15%	12%	10%

Beam angle 50%	Field angle 10%	Cut-off angle 2.5%	Intensity ratio in 120°	Intensity ratio in 90°
21.6°	37.6°	52.6°	99.4%	99.0%