

Photometric / Colorimetric / Electric Report

Fixture Model:

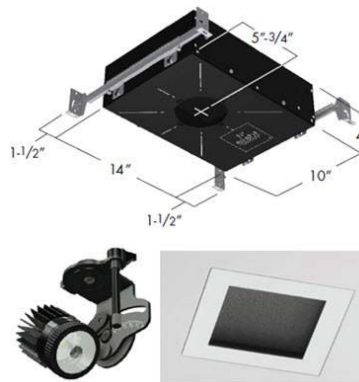
804S-J2S-HI-3-30-10-PR1-8-350-FS-LG-P-1-WH-NL

Trim Model:

FS-LG-P-1-WH/NL

Date:

12/5/2023



Light efficiency:

64 Lumen/Watt

Light quality:

CRI: 96.4

Color temperature:

3009 K

CIE 1931:

x: 0.433
y: 0.397

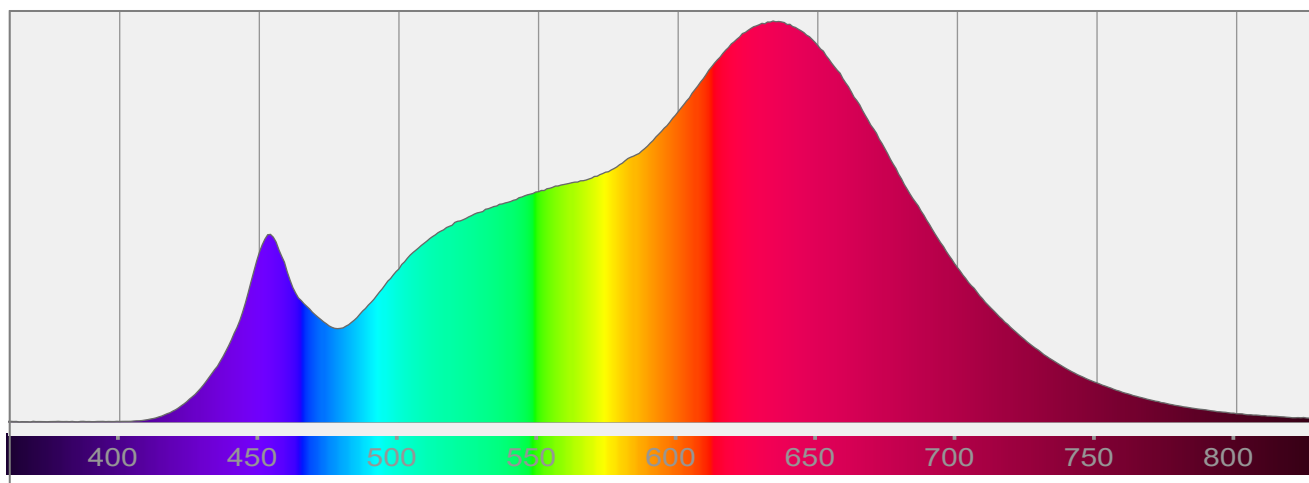
Output: 949 lm

Peak: 12441 cd

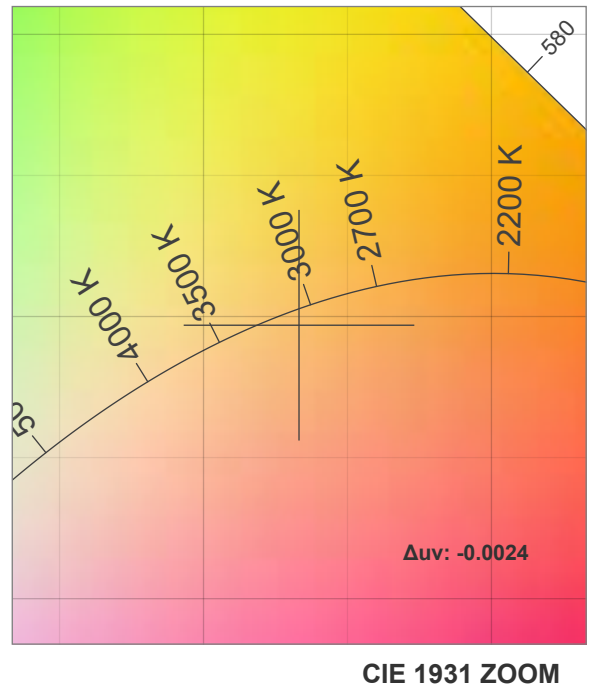
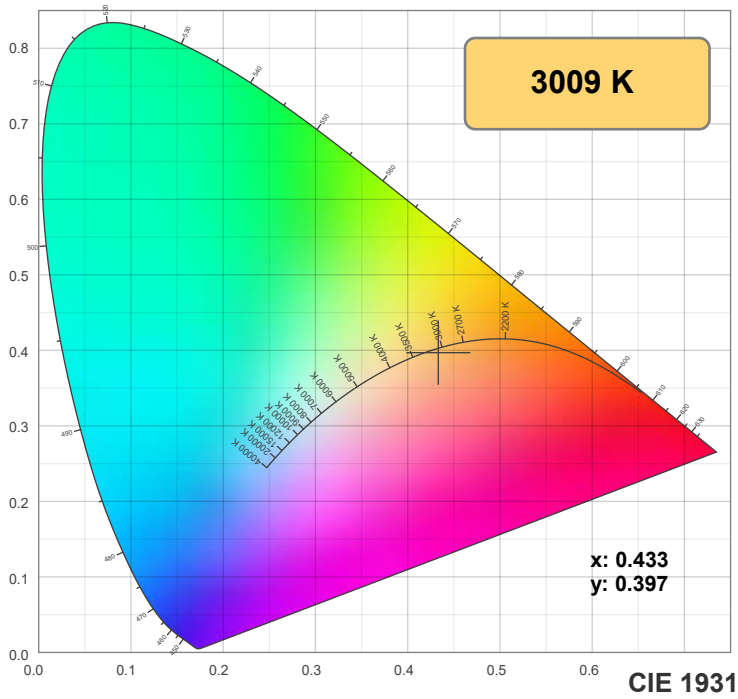
Power: 14.7 W

PF: 0.99

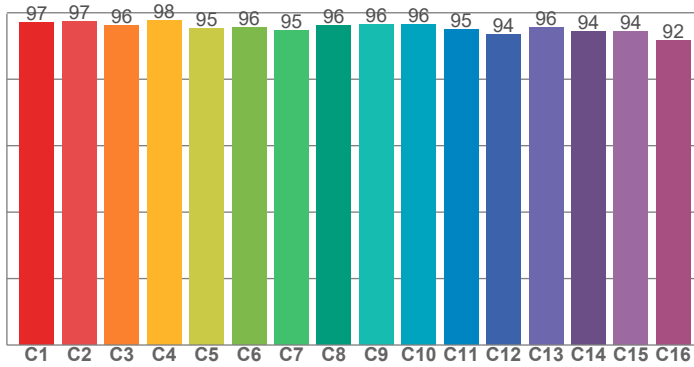
Spectra:



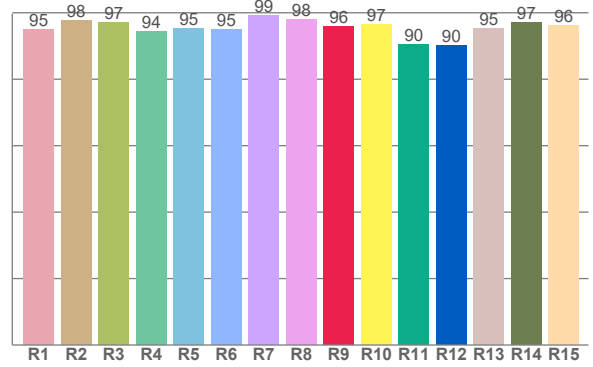
Color Details



TM-30: 95.7



CRI: 96.4 (R1-R8)



CRI R Values:

R1	R2	R3	R4	R5	R6	R7	R8	R9	R10	R11	R12	R13	R14	R15
95.0	97.7	97.0	94.2	95.3	95.1	99.3	97.9	95.8	96.6	90.5	90.1	95.3	97.2	96.1

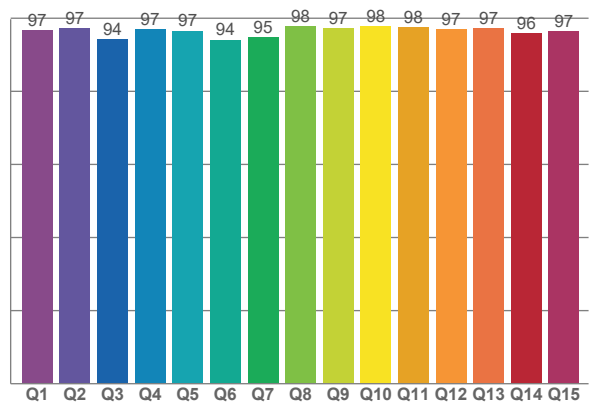
TM30 C Values:

C1	C2	C3	C4	C5	C6	C7	C8	C9	C10	C11	C12	C13	C14	C15	C16
97.0	97.4	96.2	97.7	95.3	95.7	94.6	96.0	96.5	96.5	94.9	93.5	95.5	94.3	94.2	91.7

CQS Q values:

Q1	Q2	Q3	Q4	Q5	Q6	Q7	Q8	Q9	Q10	Q11	Q12	Q13	Q14	Q15
96.7	97.3	94.3	97.0	96.6	94.1	94.8	97.9	97.4	97.7	97.5	96.9	97.2	95.8	96.5

CQS: 96.2



Color Parameters:

CCT	CRI	CRI R9	TM30 Rf	TM30 Rg	CQS	x	y	u	v	Δuv
3009 K	96.4	95.8	95.7	102.9	96.2	0.433	0.397	0.251	0.345	-0.0024

TM-30 Details

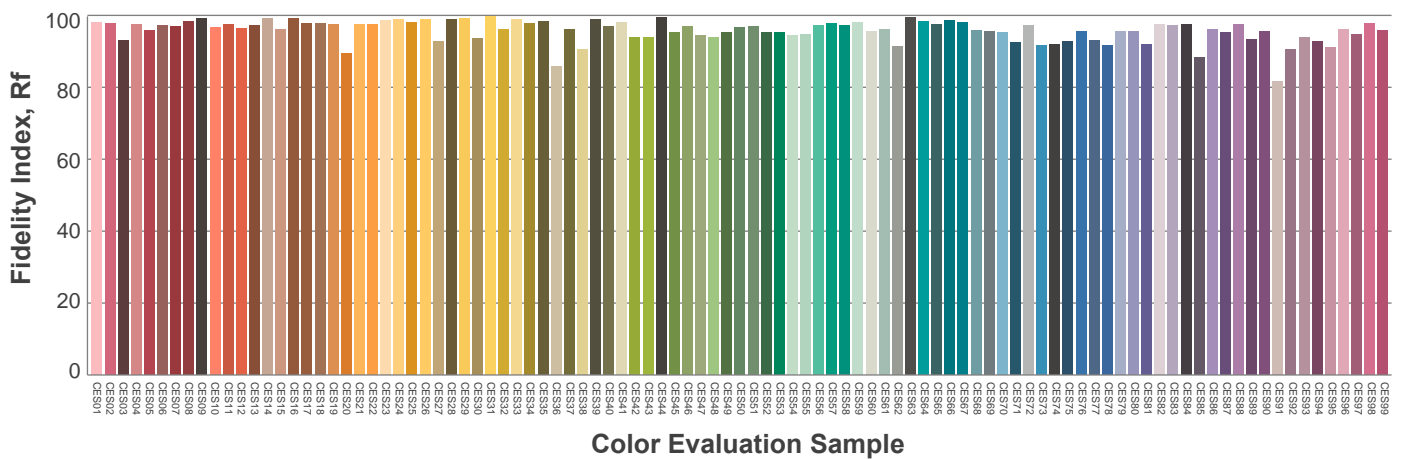
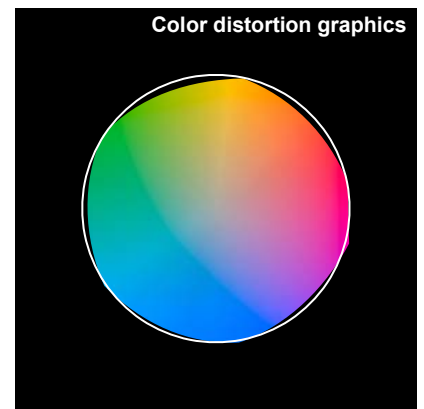
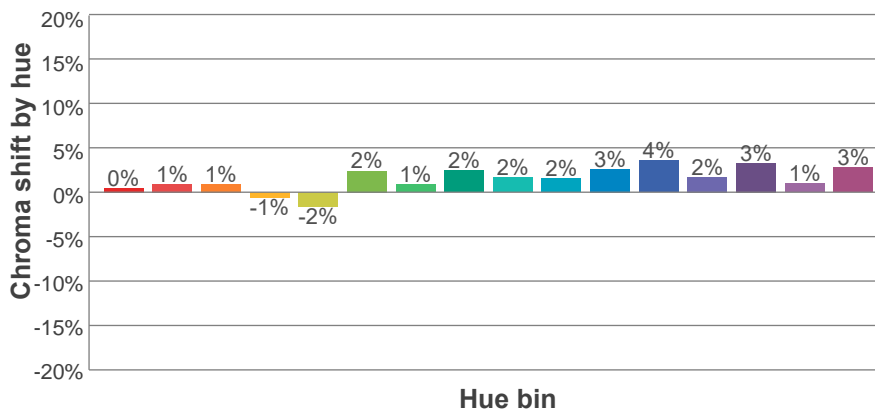
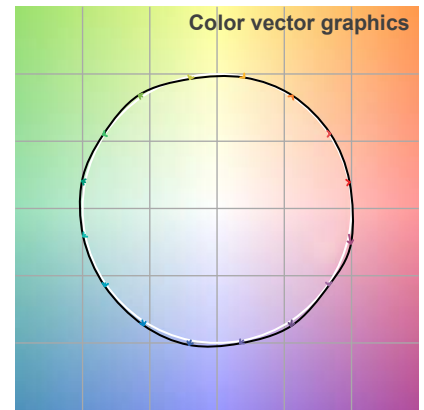
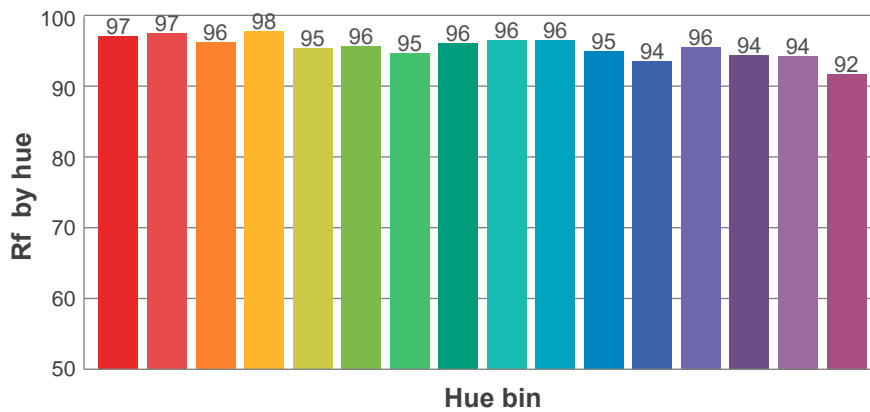
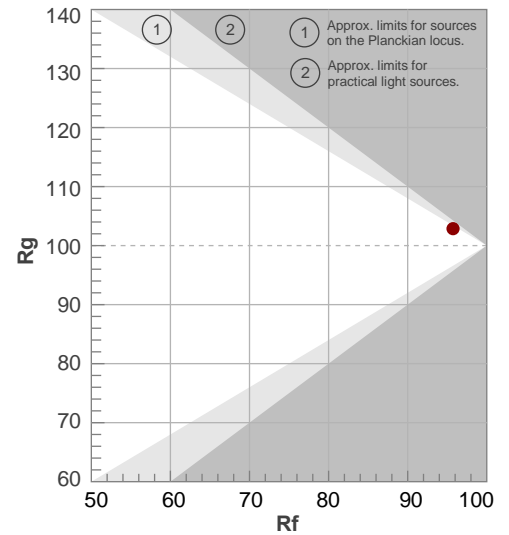
Rf 95.7

Fidelity index Rf

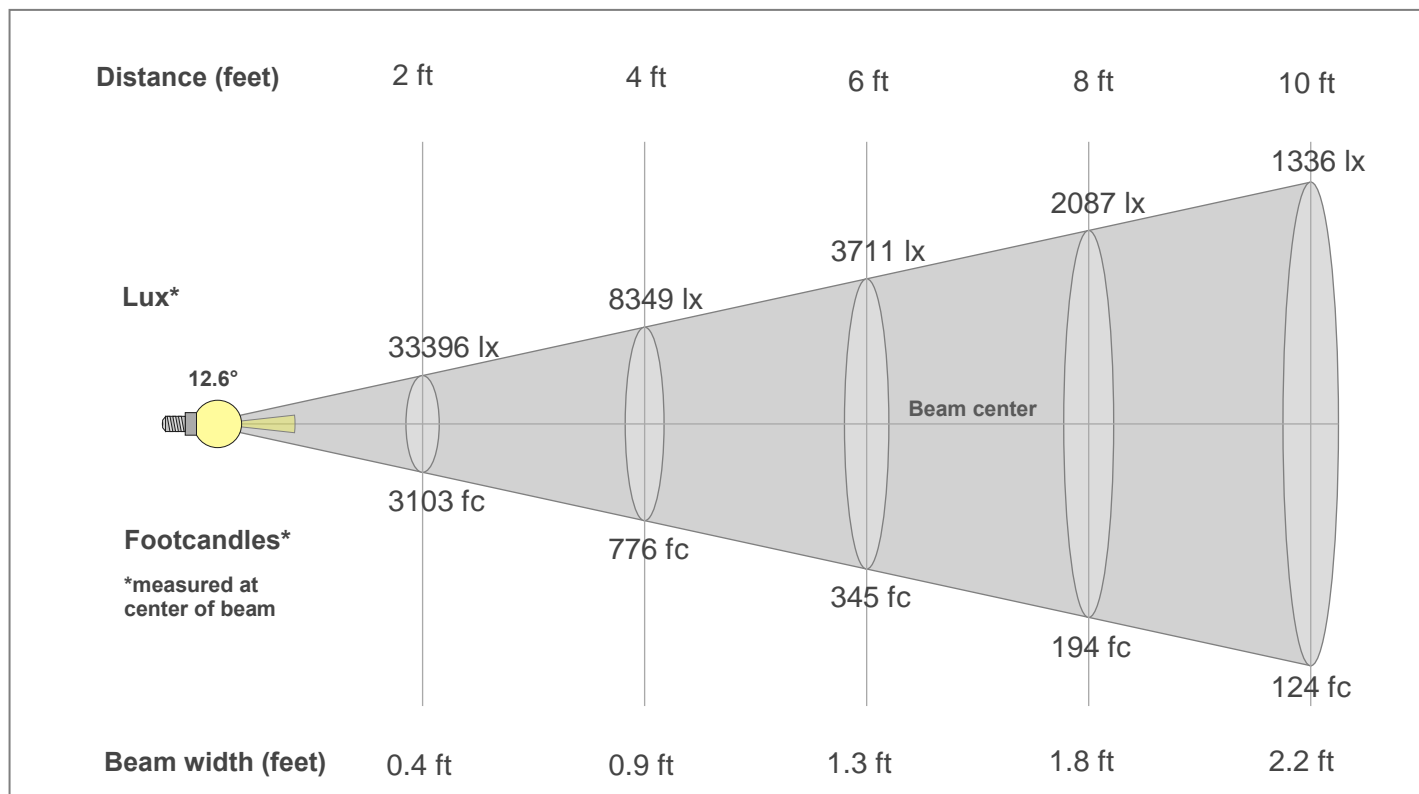
Rg 102.9

Gamut index Rg

Hue Bin	R _f	Shifts (%)	
		Chroma	Hue
1	97	0%	0%
2	97	1%	-1%
3	96	1%	0%
4	98	-1%	-1%
5	95	-2%	1%
6	96	2%	2%
7	95	1%	2%
8	96	2%	0%
9	96	2%	1%
10	96	2%	2%
11	95	3%	3%
12	94	4%	-1%
13	96	2%	-3%
14	94	3%	-3%
15	94	1%	-1%
16	92	3%	-6%



Beam Details



Beam Intensities from 1-20m

1m	2m	3m	4m	5m	6m	7m	8m	9m	10m	11m	12m	13m	14m	15m	16m	17m	18m	19m	20m
3.3ft	6.6ft	9.8ft	13.1ft	16.4ft	19.7ft	23ft	26.2ft	29.5ft	32.8ft	36.1ft	39.4ft	42.7ft	45.9ft	49.2ft	52.5ft	55.8ft	59.1ft	62.3ft	65.6ft
12410lx	3103lx	1379lx	776lx	496lx	345lx	253lx	194lx	153lx	124lx	103lx	86lx	73lx	63lx	55lx	48lx	43lx	38lx	34lx	31lx
1153fc	288.2fc	128.1fc	72.1fc	46.1fc	32fc	23.5fc	18fc	14.2fc	11.5fc	9.5fc	8fc	6.8fc	5.9fc	5.1fc	4.5fc	4fc	3.6fc	3.2fc	2.9fc

Intensities in 0° c-plane

0°	1°	2°	3°	4°	5°	6°	7°	8°	9°	10°	11°	12°	13°	14°	15°	16°	17°	18°	19°
12.4K	12.3K	11.8K	10.8K	9.5K	8.0K	6.5K	5.1K	4.0K	3.1K	2.4K	1.9K	1.6K	1.3K	1.1K	0.9K	0.8K	0.6K	0.5K	0.5K
100%	99%	95%	87%	76%	64%	52%	41%	32%	25%	19%	15%	13%	10%	9%	7%	6%	5%	4%	4%

Intensities in 90° c-plane

0°	1°	2°	3°	4°	5°	6°	7°	8°	9°	10°	11°	12°	13°	14°	15°	16°	17°	18°	19°
12.4K	12.4K	12.0K	11.1K	9.8K	8.2K	6.7K	5.3K	4.1K	3.1K	2.4K	2.0K	1.6K	1.3K	1.1K	0.9K	0.8K	0.7K	0.5K	0.5K
100%	100%	97%	90%	79%	66%	54%	43%	33%	25%	20%	16%	13%	11%	9%	8%	6%	5%	4%	4%

Intensities in 180° c-plane

0°	1°	2°	3°	4°	5°	6°	7°	8°	9°	10°	11°	12°	13°	14°	15°	16°	17°	18°	19°
12.4K	12.3K	11.8K	10.8K	9.5K	8.0K	6.5K	5.1K	4.0K	3.1K	2.4K	1.9K	1.6K	1.3K	1.1K	0.9K	0.8K	0.6K	0.5K	0.5K
100%	99%	95%	87%	76%	64%	52%	41%	32%	25%	19%	15%	13%	10%	9%	7%	6%	5%	4%	4%

Intensities in 270° c-plane

0°	1°	2°	3°	4°	5°	6°	7°	8°	9°	10°	11°	12°	13°	14°	15°	16°	17°	18°	19°
12.4K	12.4K	12.0K	11.1K	9.8K	8.2K	6.7K	5.3K	4.1K	3.1K	2.4K	2.0K	1.6K	1.3K	1.1K	0.9K	0.8K	0.7K	0.5K	0.5K
100%	100%	97%	90%	79%	66%	54%	43%	33%	25%	20%	16%	13%	11%	9%	8%	6%	5%	4%	4%

Beam angle 50%	Field angle 10%	Cut-off angle 2.5%	Intensity ratio in 120°	Intensity ratio in 90°
12.6°	26.7°	42.4°	99.2%	98.9%