

## Photometric / Colorimetric / Electric Report

Fixture Model:

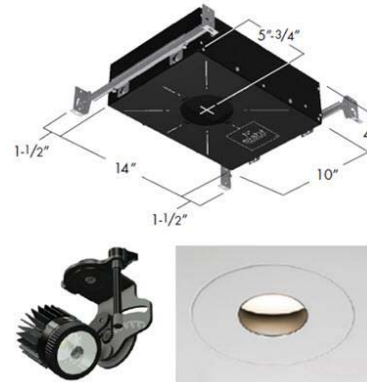
**804S-J2S-HI-3-30-40-PR1-8-350-FR-P-1-WH-WW-8-20d**

Trim Model:

**FR-P-1-WH-WW-8**

Date:

**12/14/2023**



Light efficiency:

**37 Lumen/Watt**

Light quality:

**CRI: 97.4**

Color temperature:

**3001 K**

CIE 1931:

**x: 0.435  
y: 0.399**

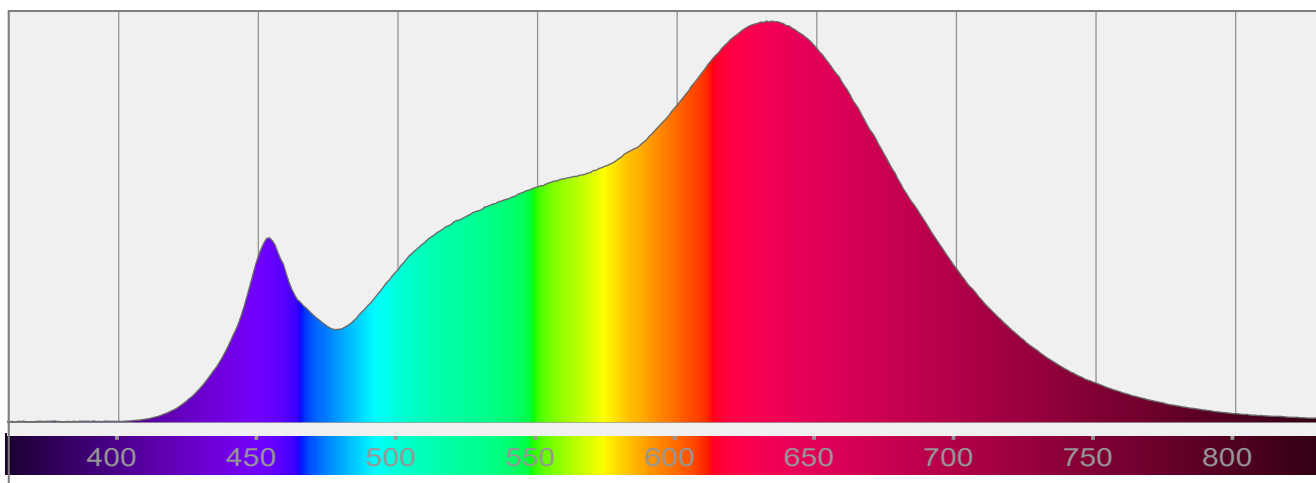
**Output: 552 lm**

**Peak: 437 cd**

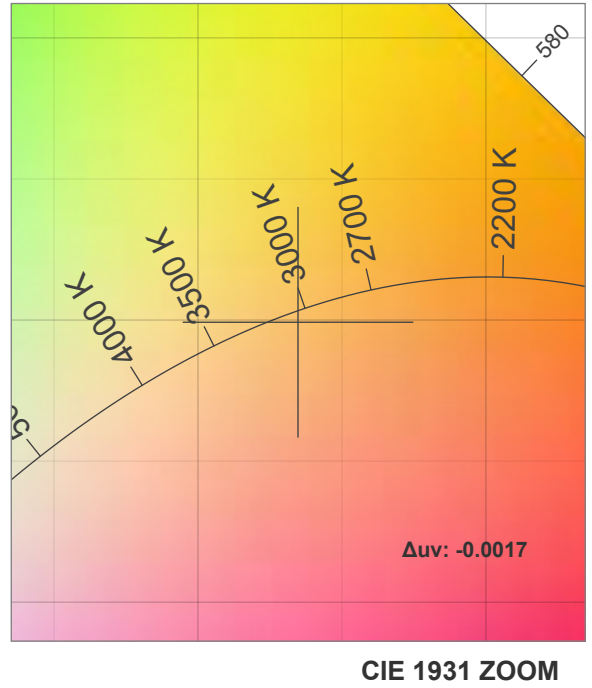
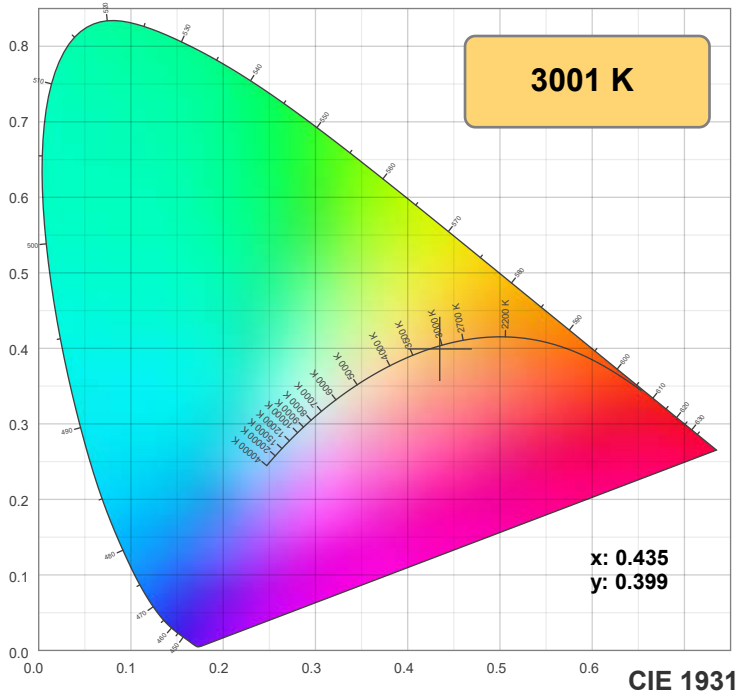
**Power: 14.7 W**

**PF: 0.99**

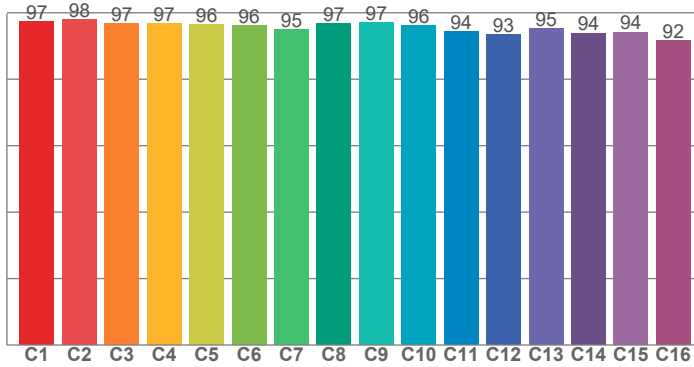
Spectra:



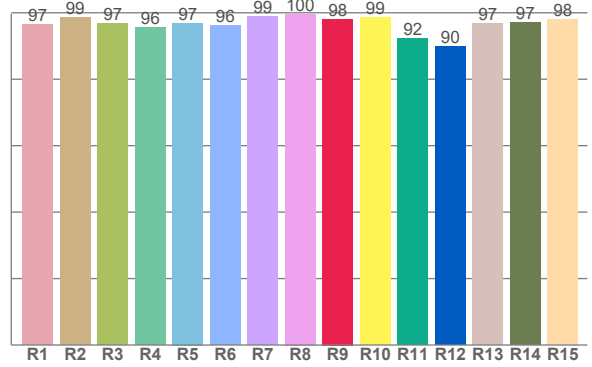
## Color Details



**TM-30: 95.8**



**CRI: 97.4 (R1-R8)**



**CRI R Values:**

R1	R2	R3	R4	R5	R6	R7	R8	R9	R10	R11	R12	R13	R14	R15
96.5	98.6	96.8	95.6	96.9	96.2	99.0	99.6	98.1	98.6	92.3	90.0	96.7	97.1	98.0

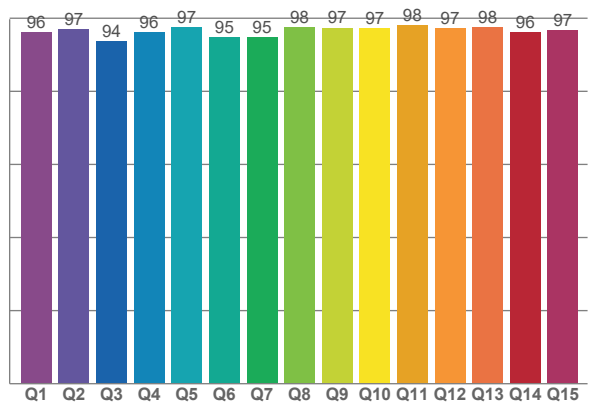
**TM30 C Values:**

C1	C2	C3	C4	C5	C6	C7	C8	C9	C10	C11	C12	C13	C14	C15	C16
97.3	97.9	96.7	96.8	96.5	96.0	95.0	96.7	97.0	96.1	94.4	93.4	95.3	93.9	94.2	91.5

**CQS Q values:**

Q1	Q2	Q3	Q4	Q5	Q6	Q7	Q8	Q9	Q10	Q11	Q12	Q13	Q14	Q15
96.1	97.1	93.8	96.1	97.4	94.7	94.8	97.6	97.4	97.4	98.0	97.4	97.6	96.1	96.7

**CQS: 96.2**



**Color Parameters:**

CCT	CRI	CRI R9	TM30 Rf	TM30 Rg	CQS	x	y	u	v	$\Delta uv$
3001 K	97.4	98.1	95.8	102.3	96.2	0.435	0.399	0.251	0.346	-0.0017

# TM-30 Details

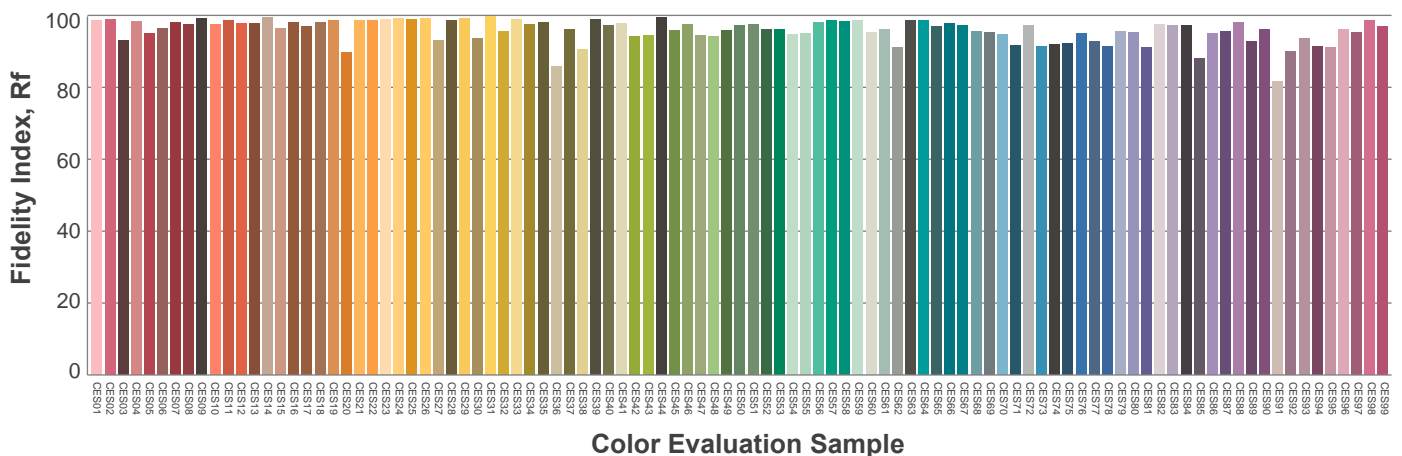
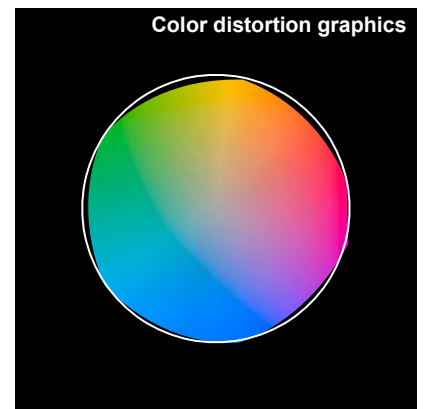
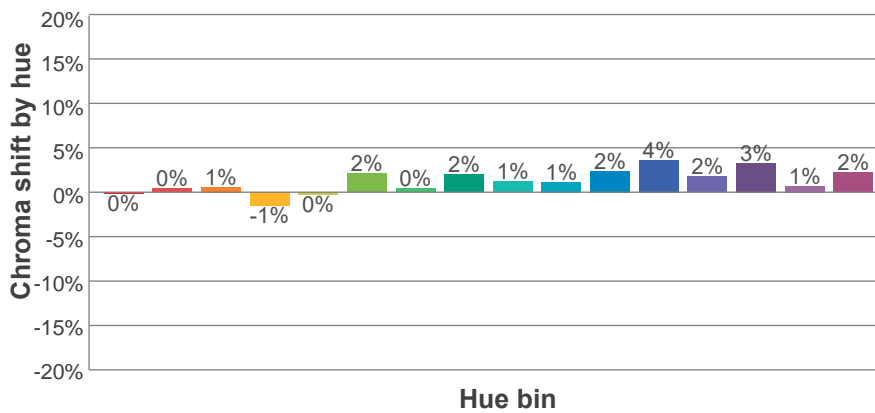
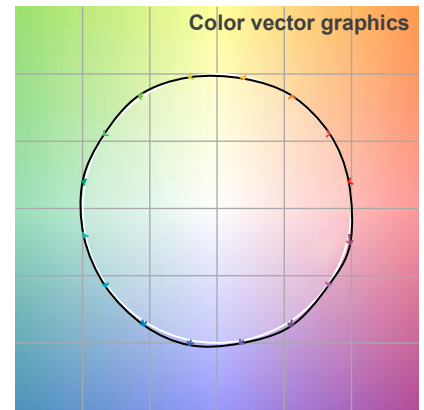
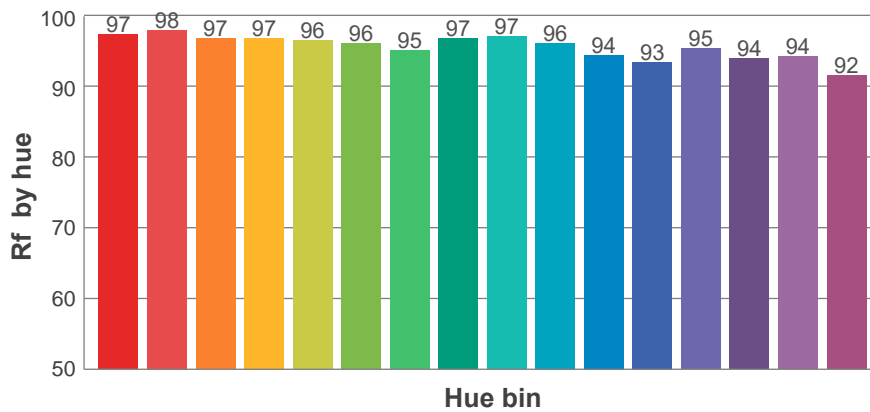
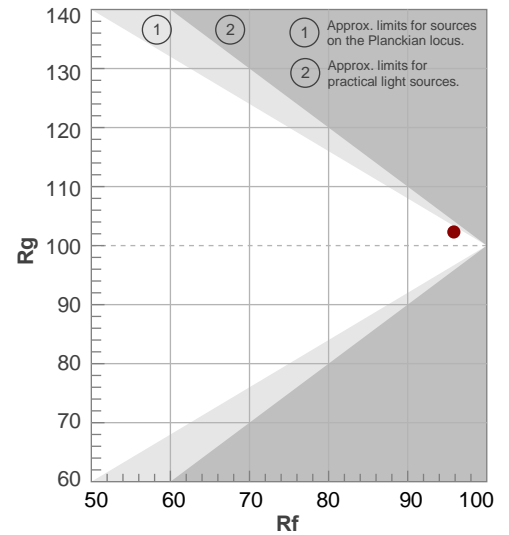
**Rf 95.8**

Fidelity index Rf

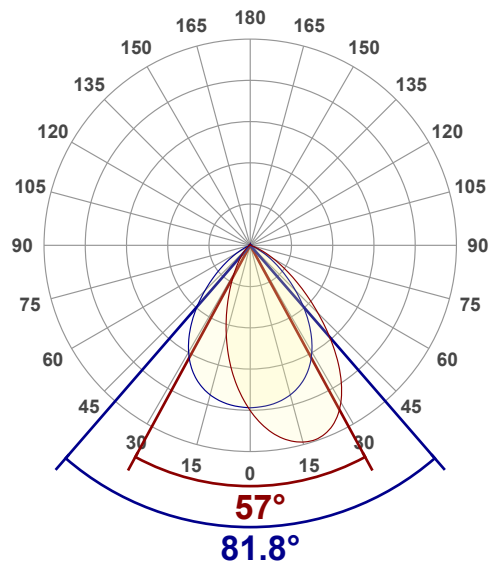
**Rg 102.3**

Gamut index Rg

Hue Bin	R <sub>f</sub>	Shifts (%)	
		Chroma	Hue
1	97	0%	0%
2	98	0%	0%
3	97	1%	0%
4	97	-1%	-1%
5	96	0%	1%
6	96	2%	1%
7	95	0%	1%
8	97	2%	0%
9	97	1%	1%
10	96	1%	2%
11	94	2%	4%
12	93	4%	0%
13	95	2%	-3%
14	94	3%	-3%
15	94	1%	-2%
16	92	2%	-7%



## Angular Distribution Through 0° and 90° Planes



**Beam Angle: 81.8°W x 57°L**

## Beam Details

