

HOUSING: **804S** – LOW PROFILE
LAMP MODULE: **M2S** – MIRROR REFLECTOR | LED

Project Name	
Date	Type
Prepared By	
Comments	
Catalog # 804S/M2S- - - - - / - /	

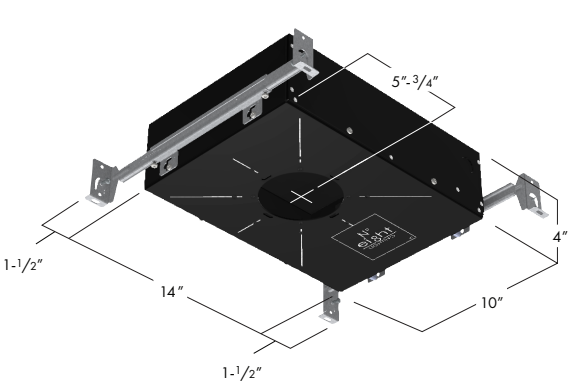


526 Portal Street
Cotati, CA 94931
USA
P 707.794.0888
www.8lighting.com

All No. 8 Lighting fixtures and components are UL Listed to both U.S. and Canadian requirements. Select 804S Series fixtures and components are also CE Certified. No. 8 Lighting trims and lamp modules are protected by one or more U.S. Patents. No. 8 Lighting reserves the right to change details of design, materials, and finish.
© 2025 No. 8 Lighting
Doc # 91173-13.3



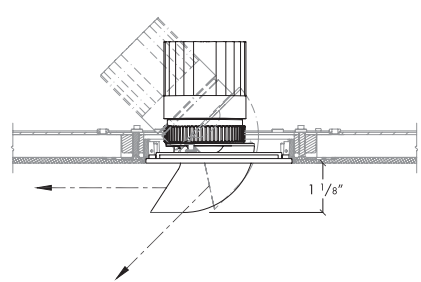
PRODUCT FEATURES



804S - LOW PROFILE HOUSING
(Shown with BH mounting accessory)



M2S - LED MIRROR REFLECTOR



LAMP MODULE **M2S**- TRIM ASSEMBLY
CROSS SECTION DETAIL

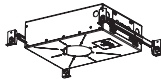


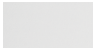

Note: Cross sections are for illustration purposes only. Refer to Page 3 for additional details.

804S/M2S SPECIFICATION SUMMARY

	Static White Standard Output		Static White High Output	Warm Dimming		
LED Option	HI	HI-2	HI	WD	WD-2	WD-4
Delivered Lumens	738	857	951	569	560	627
System Wattage	14	14.5	20	14.5	14.5	14.5
Efficacy	53	59	48	39	39	43
CRI	93	93	93	97	96	96
R9	56	59	53	78	74	73
CCT Options	2700K, 3000K			3000-1800K	2800-2200K	3000-2200K
Optic Options	15, 25, 40	10	15, 25, 40	15, 25, 40		
Color Consistency	2-Step			3-Step		
Optical Accessories	Narrow, Medium, Wide, Extra Wide, Linear Spread, and 2400K, 2700K, 3500K Color Filters					
Adjustability	35-90° Tilt, 90° Rotation, Lockable					
Driver Options	<1% Forward/Reverse Phase (120v), 0.1/1% 0-10v (120-277v), 0.1/1% DALI (120-277v), 0.1/1% EcoSystem (120 or 277v)					
Trim Options	Round/Square Flat					
Finish Options	White, Oil-Rubbed Bronze					
Trim Mounting Options	Flanged, Flangeless Sheetrock, Flangeless Wood					
Housing Options	New Construction: Type Non-IC Air-Tight, Type IC-CP Rated CCEA Approved Air-Tight					

Data shown for M2S Lamp Module with FS/FLS and FR/FLR trim.
Warm Dimming data shown for 3000K and 2800K.
See Performance Summaries for additional information.
800 Series Trims specified separately.

PRODUCT SPECIFIER/PRODUCT ORDER NUMBER

804S / M2S- - - - - / - - - - -									
HOUSING	LAMP MODULE	TRIM FINISH	LED OPTIONS	OPTIC OPTIONS	OPTICAL ACCESSORIES (Optional)	DRIVER OPTIONS	OUTPUT	MOUNTING ACCESSORIES	
 <p>804S New Construction – Low Profile AIRTIGHT-IC and Non-IC Rated 10"W* x 14 "L* x 4"H† *Add 3" to length or width to accommodate mounting accessories. †Minimum 4 -1/2" ceiling space required when used with INSET and BEVEL Series trim assemblies.</p>	<p>LED MIRROR REFLECTOR</p> <p>M2S-S 4" SQUARE module w/integral trim plate fits into square Seamless Series™ trim assemblies*</p>  <p>M2S-R 4" ROUND module w/ integral trim plate fits into round Seamless Series™ trim assemblies*</p>  <p>*Not for use with FS-W-M or FR-W-M trim options.</p>	 <p>WH WHITE</p>  <p>OB* OIL-RUBBED BRONZE *Specialty finish.</p>	<p>HI-27 2700K White LED</p> <p>HI 3000K White LED</p> <p>HI-2-27* 2700K White LED</p> <p>HI-2* 3000K White LED</p> <p>WD† 3000-1800K Warm Dim LED</p> <p>WD-2† 2800-2200K Warm Dim LED</p> <p>WD-4† 3000-2200K Warm Dim LED</p> <p>*For use with 10°optic only. Available in standard output only.</p> <p>†Available in standard output only.</p>	<p>10* 10° Very Narrow Spot</p> <p>15 15° Narrow Spot</p> <p>25 25° Narrow Flood</p> <p>40 40°</p> <p>*For use with HI-2 LED options only.</p>	<p>NSP Narrow Softening Lens</p> <p>NFL Medium Softening Lens</p> <p>FL Wide Softening Lens</p> <p>WFL Extra Wide Softening Lens</p> <p>LS Linear Spread Softening Lens</p> <p>CF24* 2400K Color Filtering Lens</p> <p>CF27** 2700K Color Filtering Lens</p> <p>CF35** 3500K Color Filtering Lens</p> <p>*For use with HI and HI-2 2700K LED options only.</p> <p>**For use with HI and HI-2 3000K LED options only.</p>	<p>PR1-8 Premium Forward or Reverse-Phase <1% Dimming</p> <p>EL1-8† EldoLED 0-10v 1% Dimming</p> <p>EL1-01-8† EldoLED 0-10v 0.1% Dimming</p> <p>EL2-8† EldoLED DALI 1% Dimming</p> <p>EL2-01-8† EldoLED DALI 0.1% Dimming</p> <p>LU2-8 Lutron Hi-Lume LDE1 Eco-System 1% Dimming</p> <p>LU4-8 Lutron Hi-Lume PEQOE EcoSystem 0.1% Dimming</p> <p>†Also CE Certified with HI or HI-2 LED options.</p>	<p>350 Standard output for WD, WD-2, or WD-4 LED Options</p> <p>1000 Standard output for HI, HI-27, HI-2, or HI-2-27 LED Options</p> <p>1400* High output for H or HI-27 LED Options</p> <p>*Non-IC only. Not available w/ LU2-8 or LU4-8 dimming options.</p>	<p>BH Bar Hangers for joist mounting</p> <p>BB Butterfly Brackets for c-channel or bar mounting</p> <p>TBC-BH T-Bar Mounting Clips + Bar Hangers for T-Bar mounting</p> <p>PMB Panel Mounting Brackets (set of two) for direct mounting to wood panels</p>	

Housing and Installation Notes

804S Low Profile universal IC and Non-IC Rated housing available with two output options. Meets Washington State Airtight Standard WAC 51-11-0502 and in accordance with ASTM E283 to reduce energy loss. CCEA plenum rated for City of Chicago environmental air spaces. Standard output options are IC-Rated for direct contact with standard or spray-foam thermal insulation with a max combined R-Value of R42. High output options are Non-IC rated for use where insulation can be kept a minimum of 3" away from all sides. For standard output models, ambient temperatures in ceiling space should not exceed 40°C (104°F) during normal operation. For high output models and all models with **LU2-8** dimming option, ambient temperatures should not exceed 25°C (77°F). Accepts **J2S**, **K2S**, and **M2S** LED Lamp Modules and all **800 Series** Trim Assemblies. For 800 Series Trims (specified separately), see 8lighting.com/products-800-series-led.

Lamp Module, LED, Optic Option, and Accessory Notes

M2S Adjustable lamp module features 35-90° vertical* and 90° horizontal adjustment. *Vertical adjustment range based on ceiling thickness and trim type used. See Page 3 for additional details.

Use on sloped ceilings for adjustable accent, wall wash, and general lighting applications. Lamp module assembly includes either a SQUARE or ROUND trim plate for use with 800 Series Seamless trims. To ensure fixture to fixture color consistency, use of the same LED option with adjacent fixtures is recommended. One field interchangeable optic option included standard. Up to two additional optical accessories can be accommodated.

Driver and Output Option Notes

0-10v driver options are configured for linear control. DALI driver options are configured for logarithmic control. No.8 Lighting conducts extensive testing to establish compatibility with many dimmer types. For a complete list of compatible dimmers, see 8lighting.com/resources-downloads. Outputs vary depending on LED type, trim type, and optical accessories used. For photometric files in PDF and IES formats, see 8lighting.com/800-series-photometry.

Warranty

All No. 8 Lighting products are covered by a 5 year limited warranty. Products installed in residential steam applications are covered by a 2 year limited warranty. For specific warranty details and limitations, see 8lighting.com/resources-downloads.

804S/M2S w/ FS/FLS/FR/FLR TRIM - PERFORMANCE SUMMARY

LED	OUTPUT	CCT	CRI	R9	Delivered Lumens	System Wattage	Delivered LPW
HI-27	1000	2700K	93	55	565-686	14	40-49
HI	1000	3000K	93	56	607-738	14	43-53
HI-27	1400	3000K	93	53	734-884	20	37-44
HI	1400	3000K	93	53	786-951	20	39-48
HI-2-27	1000	2700K	93	58	797	14.5	55
HI-2	1000	3000K	93	59	857	14.5	59
WD	350	3000-1800K	97	78	470-569	14.5	32-39
WD-2	350	2800-2200K	96	74	469-560	14.5	32-39
WD-4	350	3000-2200K	96	73	518-627	14.5	35-43

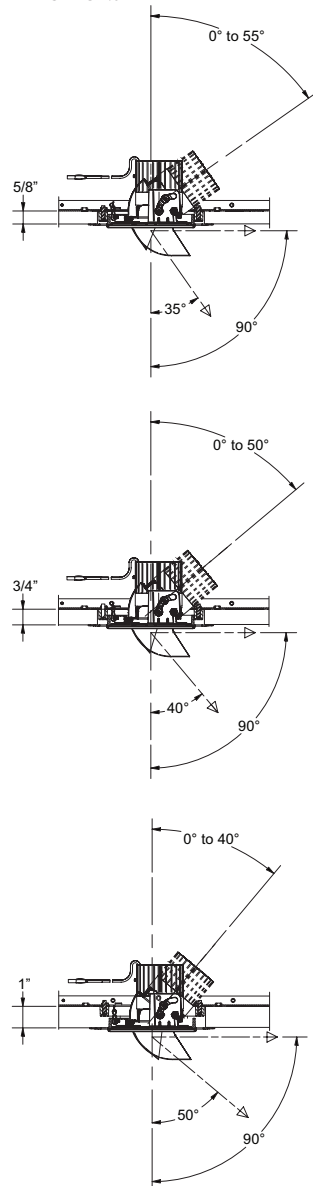
Performance summary for **HI** LED with 15°, 25°, and 40° optic options and **HI-2** LED with 10° optic option.

Performance summary for **WD** and **WD-4** LED at 3000K and **WD-2** LED at 2800K with 15°, 25°, and 40° optic options.

M2S LAMP MODULE - VERTICAL AIMING RANGE

SEAMLESS SERIES

PLASTER/SHEETROCK CEILING APPLICATIONS



SEAMLESS SERIES

WOOD/STONE CEILING APPLICATIONS

