

Photometric / Colorimetric / Electric Report

Fixture Model:

400-WD-40-DIM1-4-350-FLS-4-WH-WW-4-20d

Trim Model:

FLS-4-WH-WW-4

Date:

4/11/2022



Light efficiency:

38 Lumen/Watt

Light quality:

CRI: 97.2

Color temperature:

3088 K

CIE 1931:

x: 0.430
y: 0.399

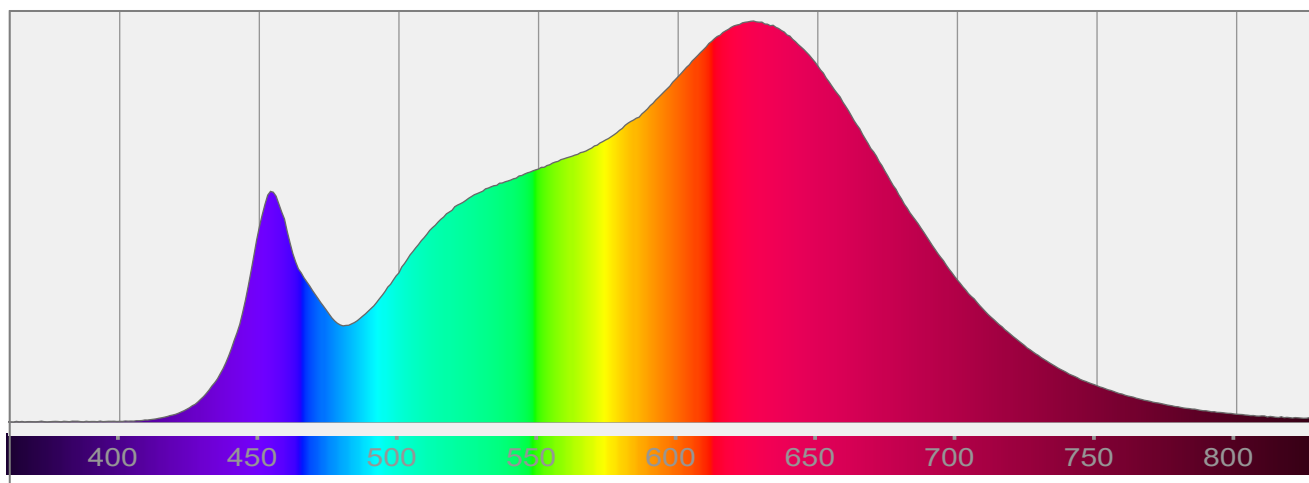
Output: 548 lm

Peak: 396 cd

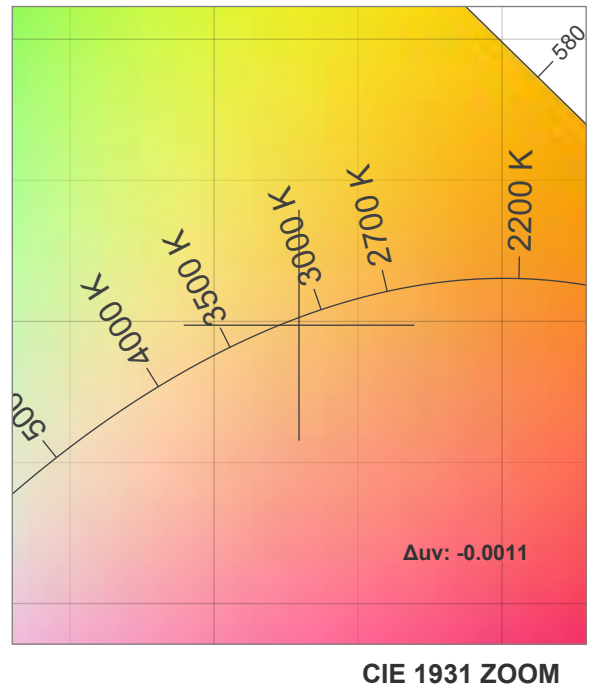
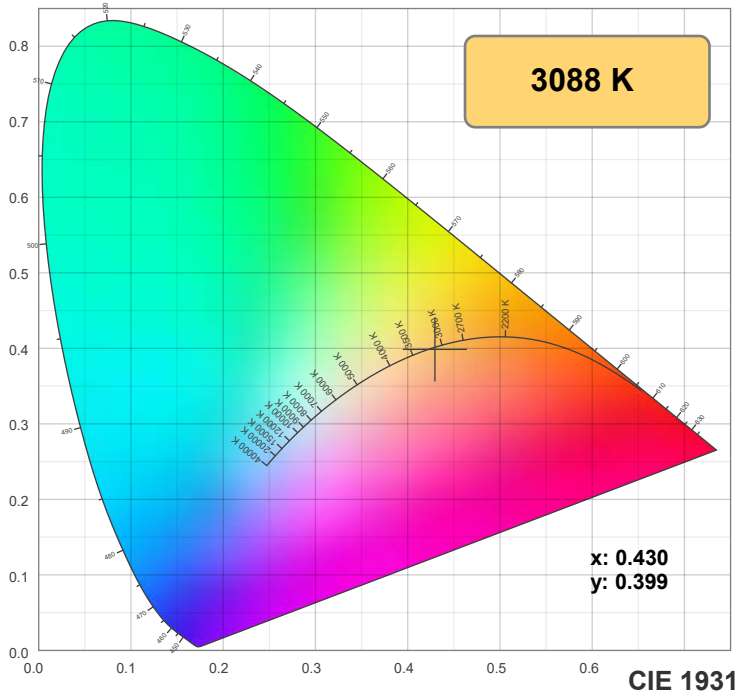
Power: 14.6 W

PF: 0.99

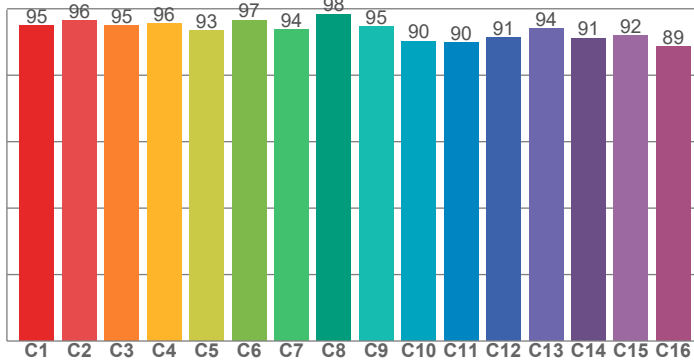
Spectra:



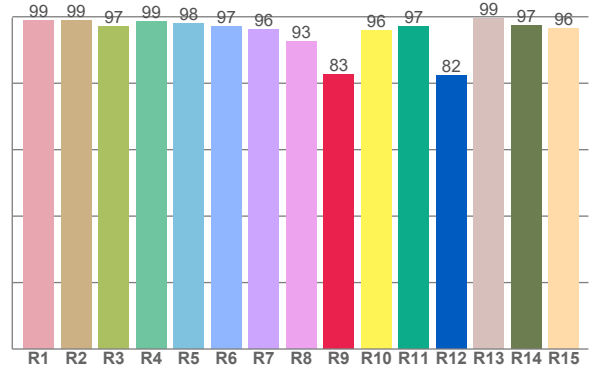
Color Details



TM-30: 93.6



CRI: 97.2 (R1-R8)



CRI R Values:

R1	R2	R3	R4	R5	R6	R7	R8	R9	R10	R11	R12	R13	R14	R15
98.8	99.0	97.0	98.6	98.1	97.0	96.3	92.6	82.5	96.0	97.2	82.3	99.4	97.3	96.5

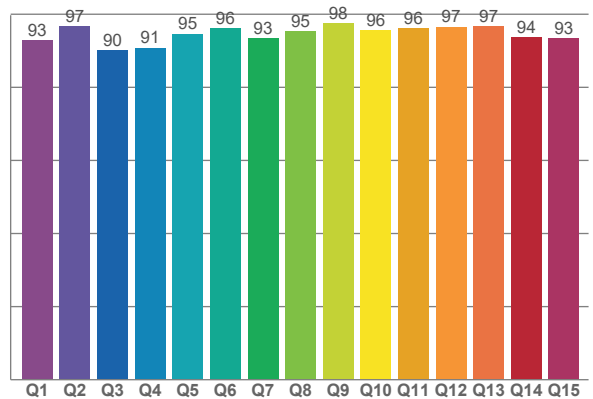
TM30 C Values:

C1	C2	C3	C4	C5	C6	C7	C8	C9	C10	C11	C12	C13	C14	C15	C16
94.9	96.4	94.9	95.6	93.5	96.6	93.8	98.4	94.5	90.3	89.8	91.3	94.1	91.2	91.9	88.7

CQS Q values:

Q1	Q2	Q3	Q4	Q5	Q6	Q7	Q8	Q9	Q10	Q11	Q12	Q13	Q14	Q15
92.9	96.8	90.2	90.8	94.7	96.3	93.4	95.4	97.5	95.7	96.2	96.6	96.6	93.7	93.4

CQS: 94.1



Color Parameters:

CCT	CRI	CRI R9	TM30 Rf	TM30 Rg	CQS	x	y	u	v	Δuv
3088 K	97.2	82.5	93.6	100.7	94.1	0.430	0.399	0.248	0.345	-0.0011

TM-30 Details

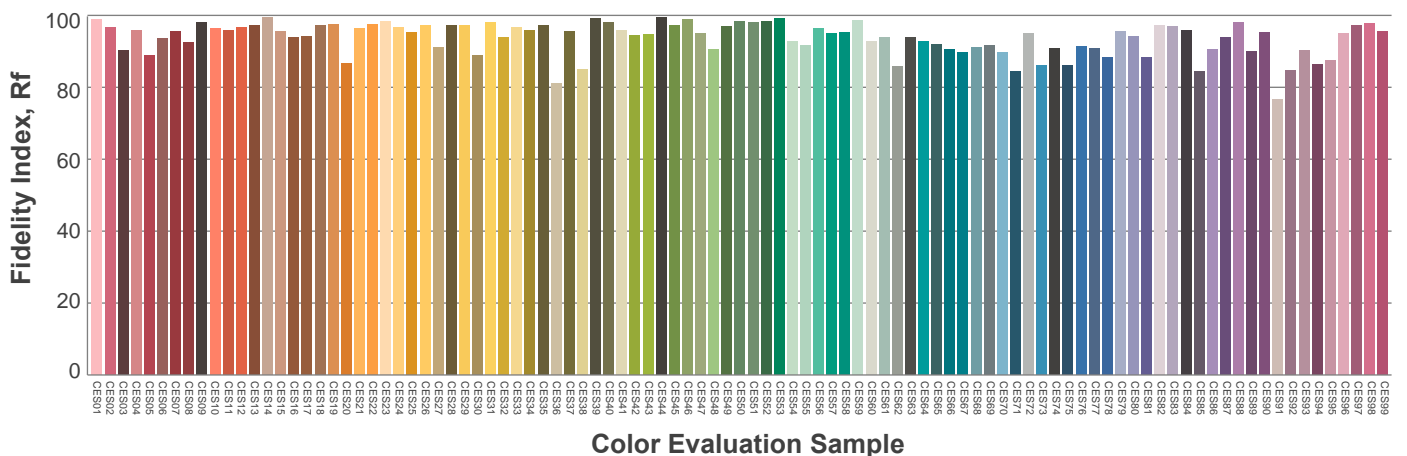
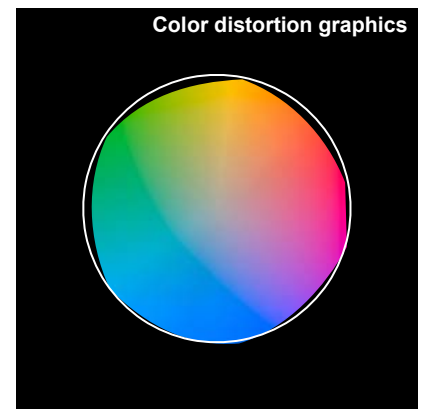
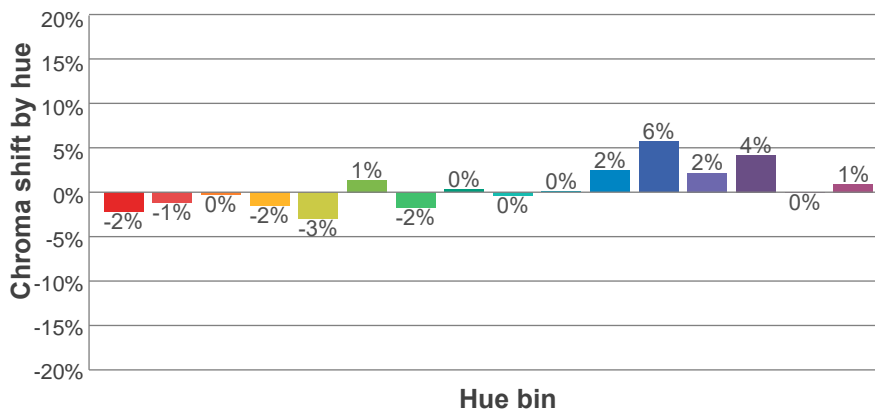
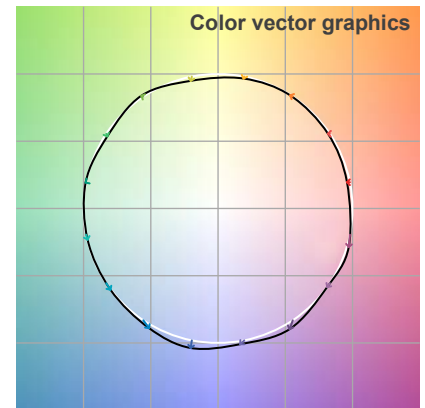
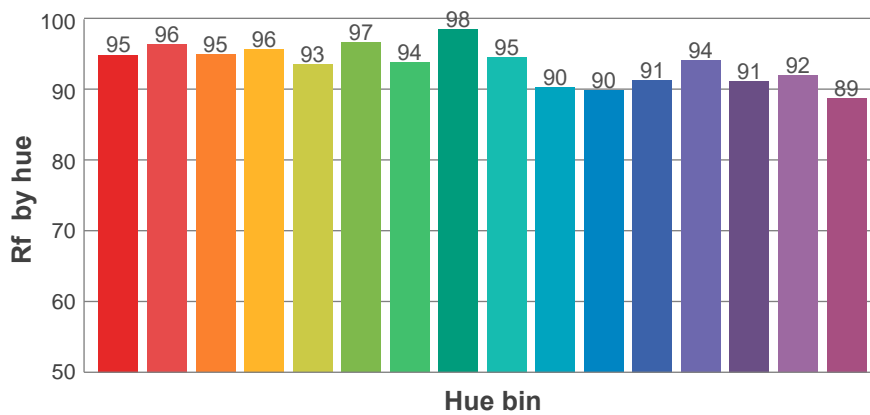
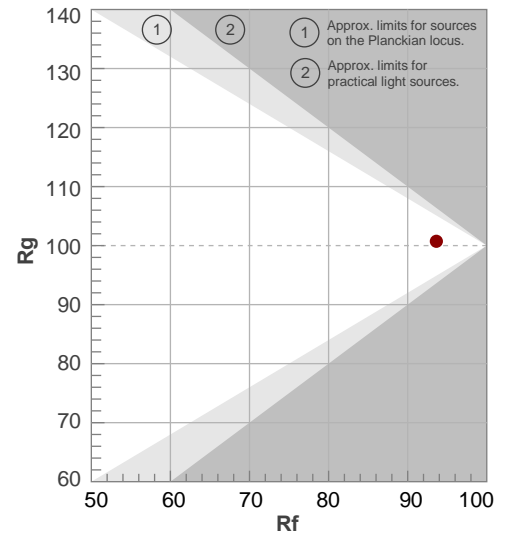
Rf 93.6

Fidelity index Rf

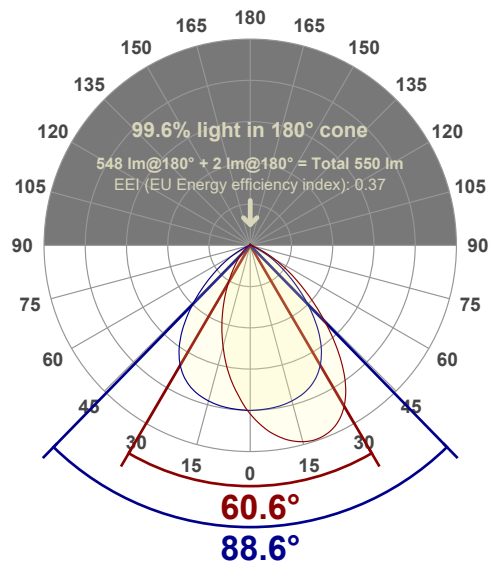
Rg 100.7

Gamut index Rg

Hue Bin	R _f	Shifts (%)	
		Chroma	Hue
1	95	-2%	0%
2	96	-1%	1%
3	95	0%	2%
4	96	-2%	0%
5	93	-3%	1%
6	97	1%	1%
7	94	-2%	1%
8	98	0%	0%
9	95	0%	4%
10	90	0%	6%
11	90	2%	7%
12	91	6%	0%
13	94	2%	-3%
14	91	4%	-6%
15	92	0%	-3%
16	89	1%	-9%



Angular Distribution Through 0° and 90° Planes



Beam Angle: 88.6°W x 60.6°L

Beam Details

