

Photometric / Colorimetric / Electric Report

Fixture Model:

400-WD-4-15-PR1-4-350-FLS-4-WH

Trim Model:

FLS-4-WH

Date:

8/7/2024



Light efficiency:

58 Lumen/Watt

Light quality:

CRI: 96.6

Color temperature:

3007 K

CIE 1931:

**x: 0.435
y: 0.400**

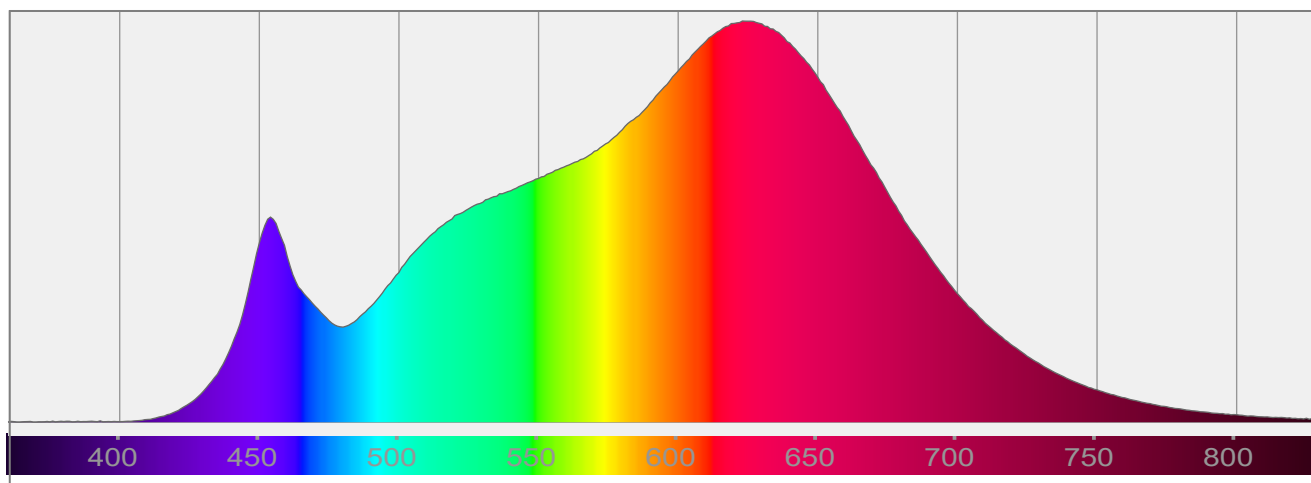
Output: 847 lm

Peak: 4410 cd

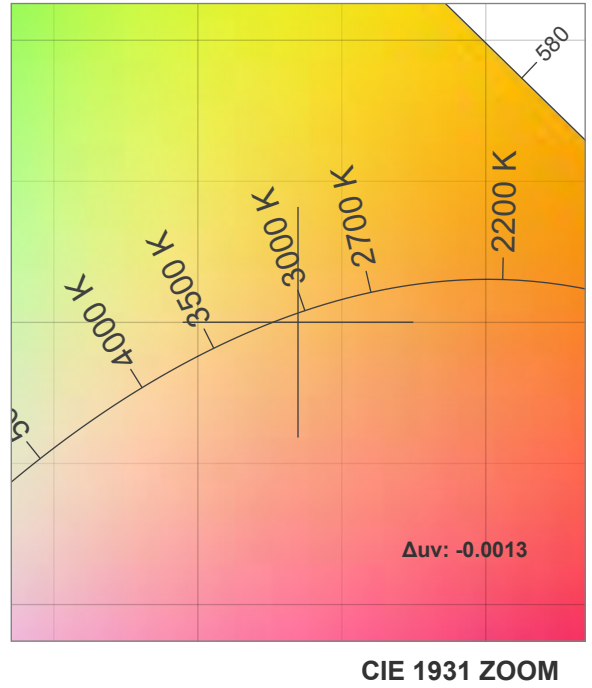
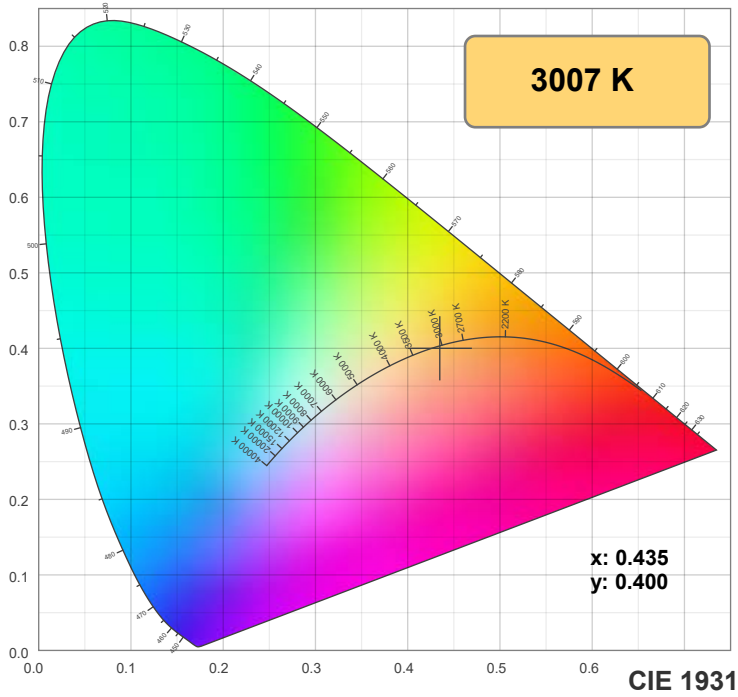
Power: 14.6 W

PF: 0.99

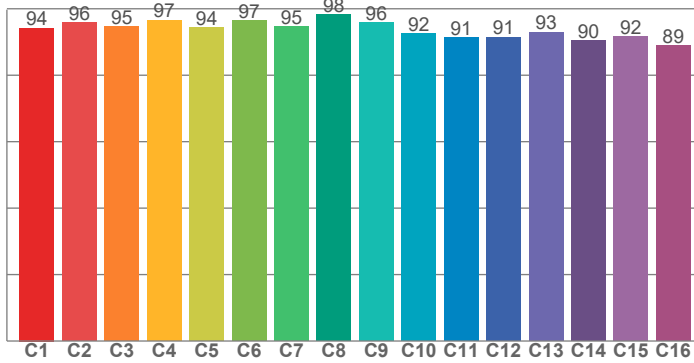
Spectra:



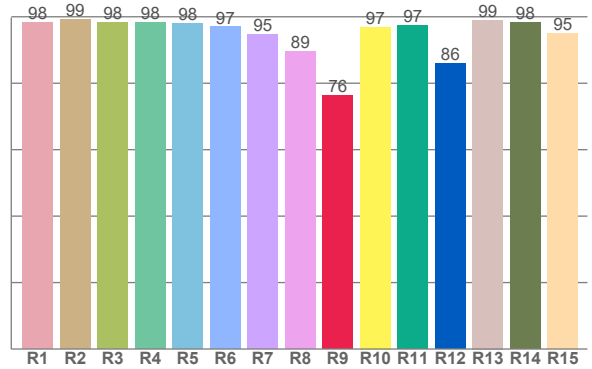
Color Details



TM-30: 93.9



CRI: 96.6 (R1-R8)



CRI R Values:

R1	R2	R3	R4	R5	R6	R7	R8	R9	R10	R11	R12	R13	R14	R15
98.3	99.2	98.4	98.2	98.1	96.9	94.6	89.5	76.3	96.9	97.4	85.9	99.0	98.2	95.0

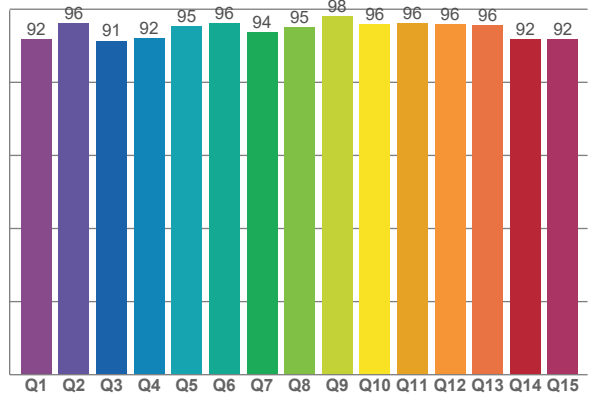
TM30 C Values:

C1	C2	C3	C4	C5	C6	C7	C8	C9	C10	C11	C12	C13	C14	C15	C16
94.2	95.8	94.6	96.6	94.4	96.5	94.6	98.3	95.8	92.4	91.3	91.5	93.0	90.4	91.7	88.8

CQS Q values:

Q1	Q2	Q3	Q4	Q5	Q6	Q7	Q8	Q9	Q10	Q11	Q12	Q13	Q14	Q15
91.7	96.2	91.4	92.1	95.4	96.2	93.6	94.9	98.2	95.9	96.1	95.9	95.6	91.8	91.7

CQS: 93.9



Color Parameters:

CCT	CRI	CRI R9	TM30 Rf	TM30 Rg	CQS	x	y	u	v	Δuv
3007 K	96.6	76.3	93.9	100.4	93.9	0.435	0.400	0.251	0.346	-0.0013

TM-30 Details

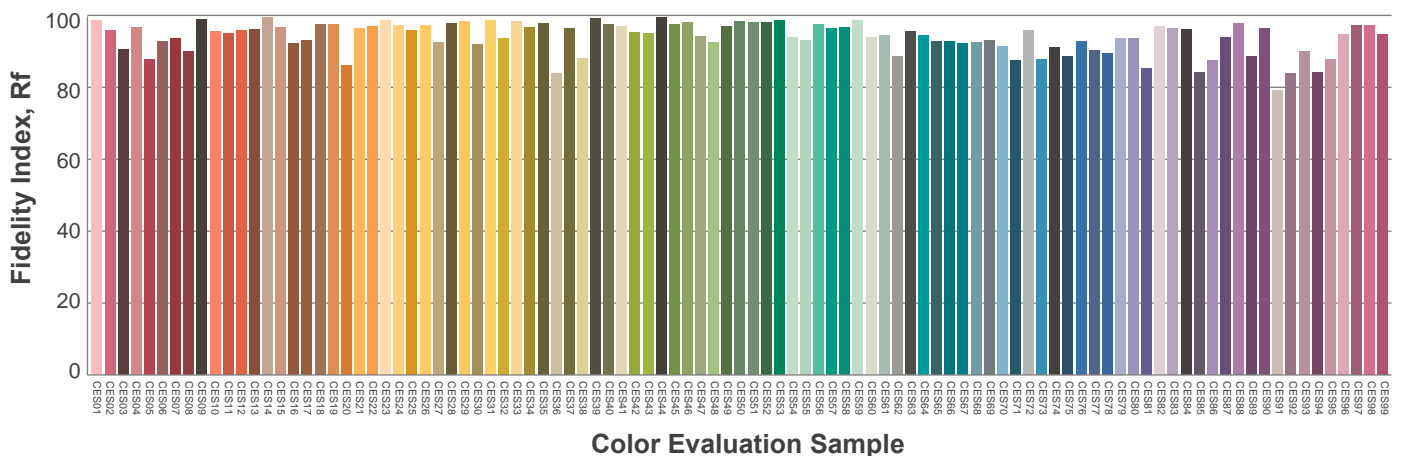
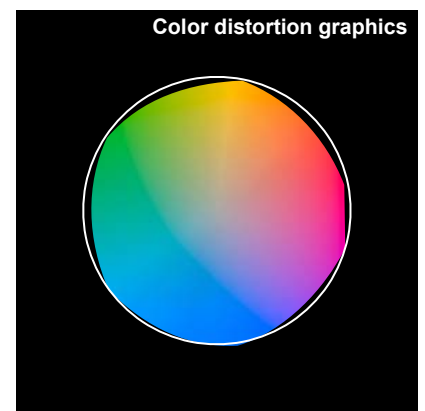
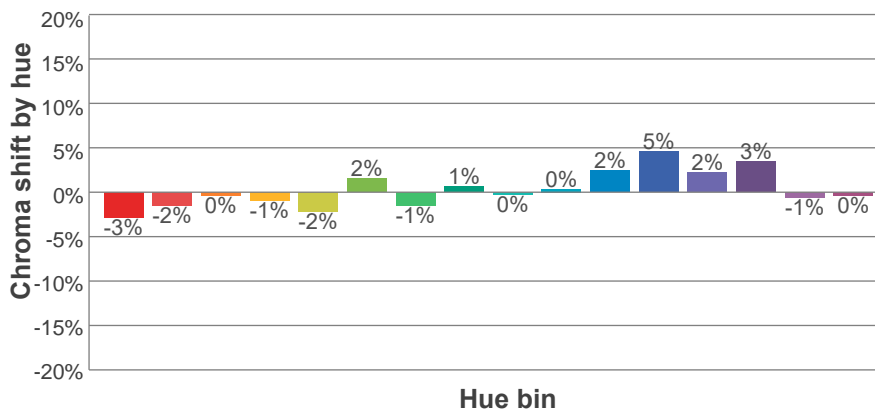
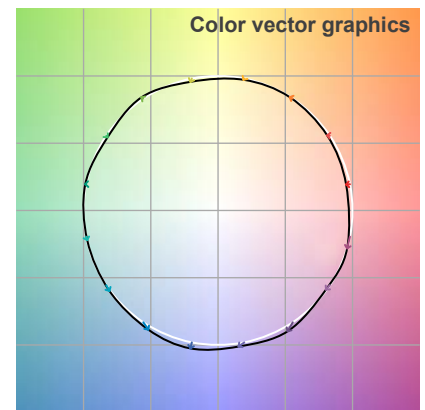
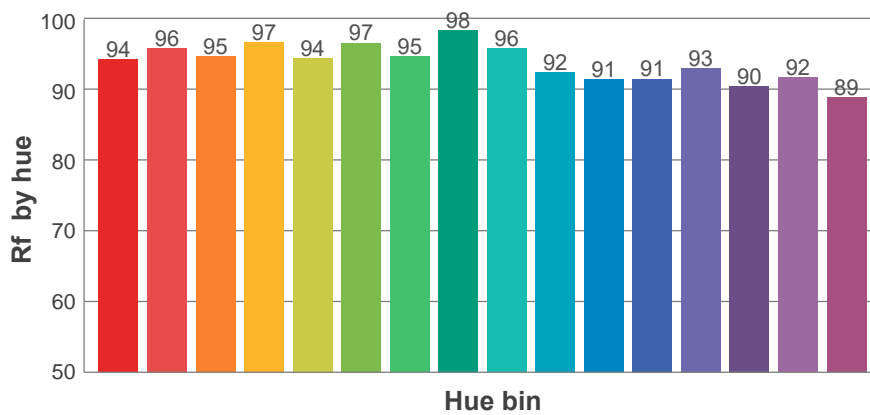
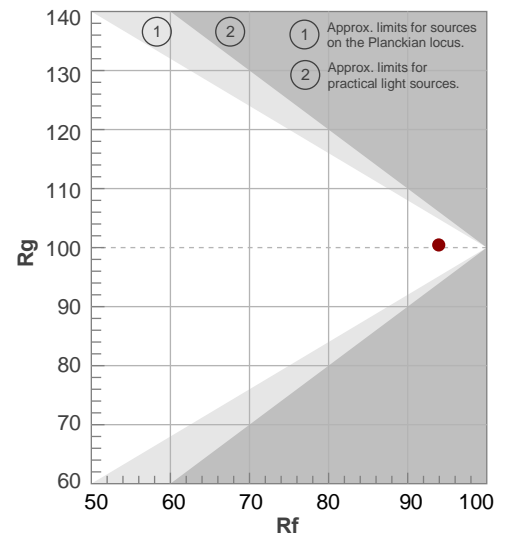
Rf 93.9

Fidelity index Rf

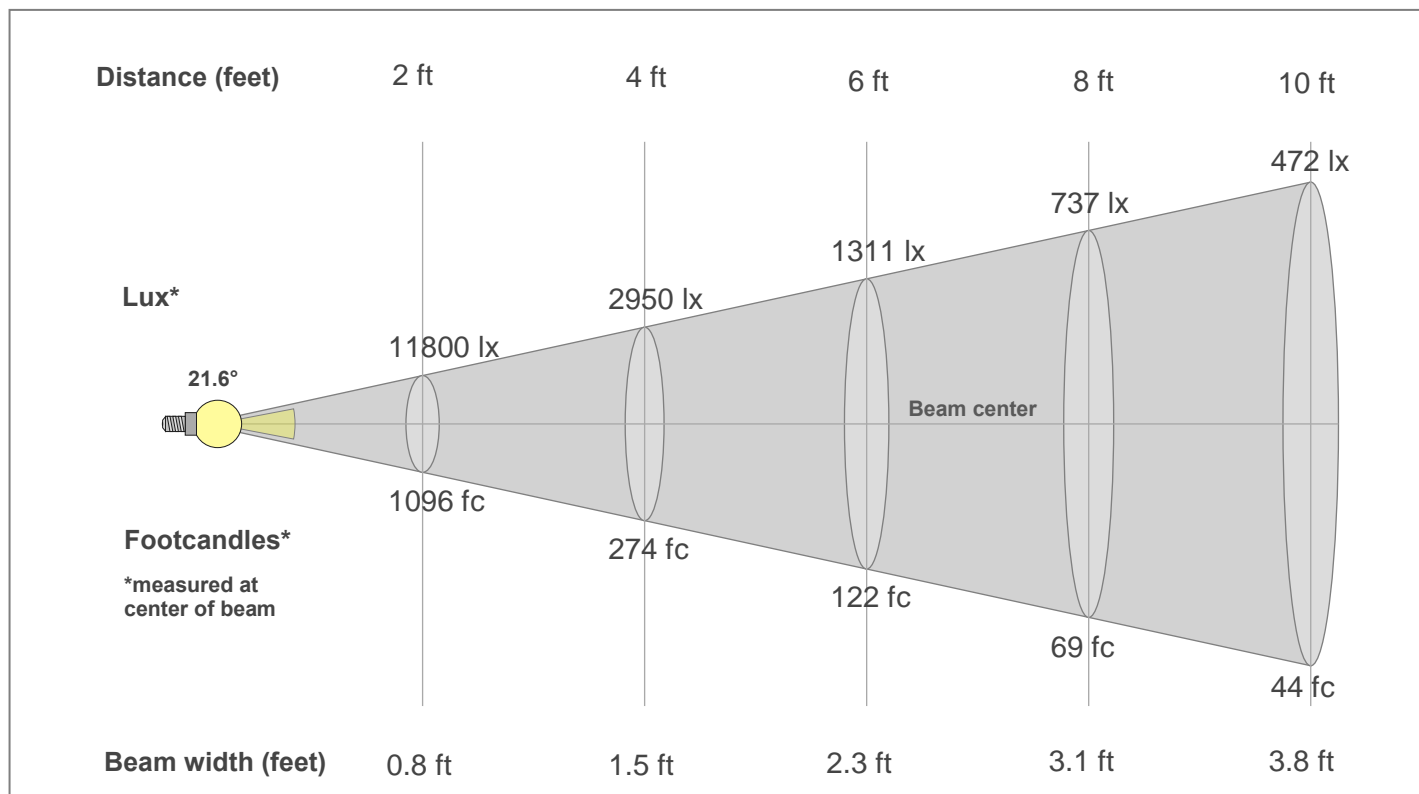
Rg 100.4

Gamut index Rg

Hue Bin	R _f	Shifts (%)	
		Chroma	Hue
1	94	-3%	0%
2	96	-2%	1%
3	95	0%	2%
4	97	-1%	0%
5	94	-2%	1%
6	97	2%	1%
7	95	-1%	0%
8	98	1%	0%
9	96	0%	3%
10	92	0%	5%
11	91	2%	6%
12	91	5%	0%
13	93	2%	-5%
14	90	3%	-7%
15	92	-1%	-4%
16	89	0%	-9%



Beam Details



Beam Intensities from 1-20m

1m	2m	3m	4m	5m	6m	7m	8m	9m	10m	11m	12m	13m	14m	15m	16m	17m	18m	19m	20m
3.3ft	6.6ft	9.8ft	13.1ft	16.4ft	19.7ft	23ft	26.2ft	29.5ft	32.8ft	36.1ft	39.4ft	42.7ft	45.9ft	49.2ft	52.5ft	55.8ft	59.1ft	62.3ft	65.6ft
4385lx	1096lx	487lx	274lx	175lx	122lx	89lx	69lx	54lx	44lx	36lx	30lx	26lx	22lx	19lx	17lx	15lx	14lx	12lx	11lx
407.4fc	101.8fc	45.3fc	25.5fc	16.3fc	11.3fc	8.3fc	6.4fc	5fc	4.1fc	3.4fc	2.8fc	2.4fc	2.1fc	1.8fc	1.6fc	1.4fc	1.3fc	1.1fc	1fc

Intensities in 0° c-plane

0°	2°	4°	6°	8°	10°	12°	14°	16°	18°	20°	22°	24°	26°	28°	30°	32°	34°	36°	38°
4385	4291	4042	3607	3053	2443	1873	1404	1051	791	596	447	335	247	177	121	77	39	21	14
100%	98%	92%	82%	70%	56%	43%	32%	24%	18%	14%	10%	8%	6%	4%	3%	2%	1%	0%	0%

Intensities in 90° c-plane

0°	2°	4°	6°	8°	10°	12°	14°	16°	18°	20°	22°	24°	26°	28°	30°	32°	34°	36°	38°
4385	4332	4057	3593	3006	2410	1870	1433	1092	833	637	484	368	273	196	134	84	42	24	15
100%	99%	93%	82%	69%	55%	43%	33%	25%	19%	15%	11%	8%	6%	4%	3%	2%	1%	1%	0%

Intensities in 180° c-plane

0°	2°	4°	6°	8°	10°	12°	14°	16°	18°	20°	22°	24°	26°	28°	30°	32°	34°	36°	38°
4385	4291	4042	3607	3053	2443	1873	1404	1051	791	596	447	335	247	177	121	77	39	21	14
100%	98%	92%	82%	70%	56%	43%	32%	24%	18%	14%	10%	8%	6%	4%	3%	2%	1%	0%	0%

Intensities in 270° c-plane

0°	2°	4°	6°	8°	10°	12°	14°	16°	18°	20°	22°	24°	26°	28°	30°	32°	34°	36°	38°
4385	4332	4057	3593	3006	2410	1870	1433	1092	833	637	484	368	273	196	134	84	42	24	15
100%	99%	93%	82%	69%	55%	43%	33%	25%	19%	15%	11%	8%	6%	4%	3%	2%	1%	1%	0%

Beam angle 50%	Field angle 10%	Cut-off angle 2.5%	Intensity ratio in 120°	Intensity ratio in 90°
21.6°	44.9°	61.4°	99.4%	99.3%