

Photometric / Colorimetric / Electric Report

Fixture Model:

200-HD-WD-R-WD-60-NFL-DIM1-2-350-FLR-2-BV-30d

Trim Model:

FLR-2-BV-WH

Date:

8/22/2022



Light efficiency:

32 Lumen/Watt

Light quality:

CRI: 97.2

Color temperature:

3122 K

CIE 1931:

x: 0.425
y: 0.394

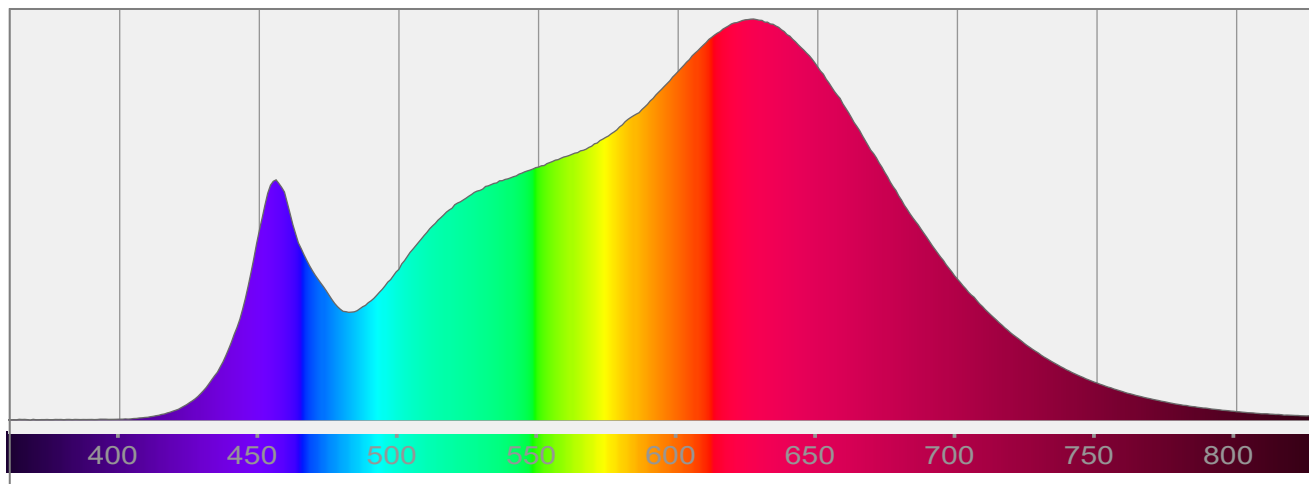
Output: 463 lm

Peak: 674 cd

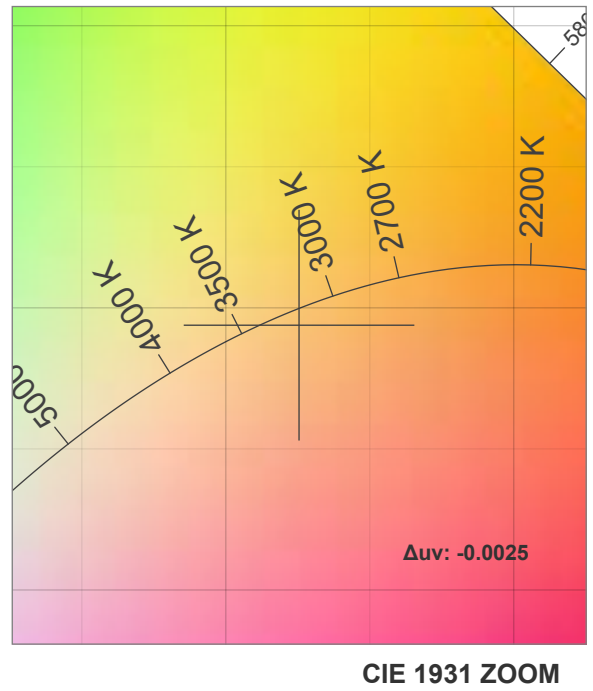
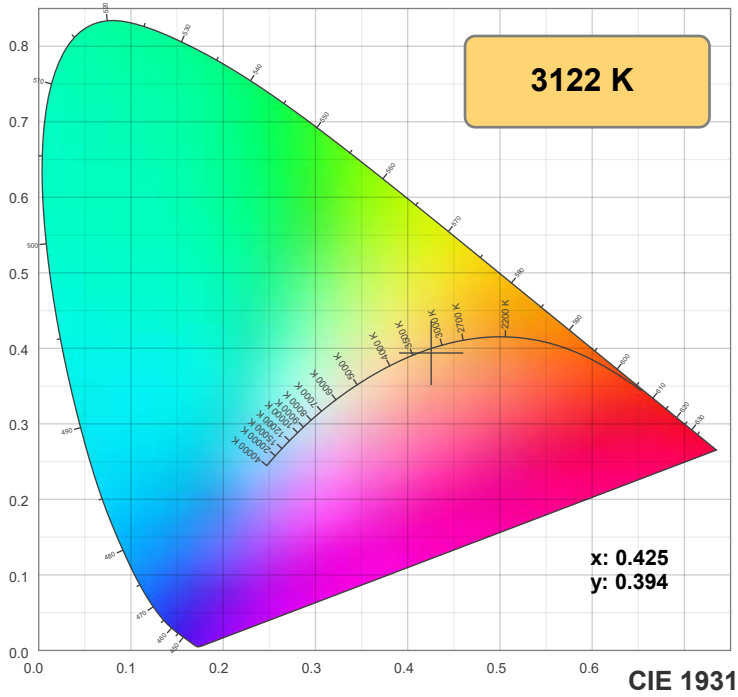
Power: 14.5 W

PF: 1.0

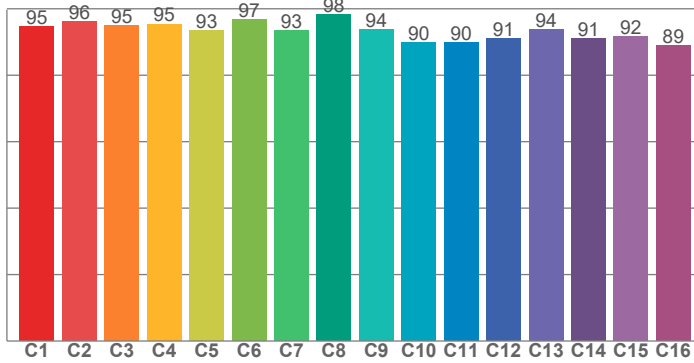
Spectra:



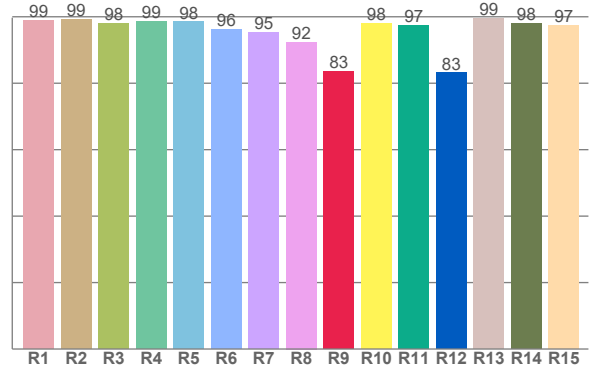
Color Details



TM-30: 93.4



CRI: 97.2 (R1-R8)



CRI R Values:

R1	R2	R3	R4	R5	R6	R7	R8	R9	R10	R11	R12	R13	R14	R15
99.0	99.2	98.1	98.7	98.4	96.3	95.4	92.4	83.4	98.1	97.3	83.1	99.4	98.0	97.3

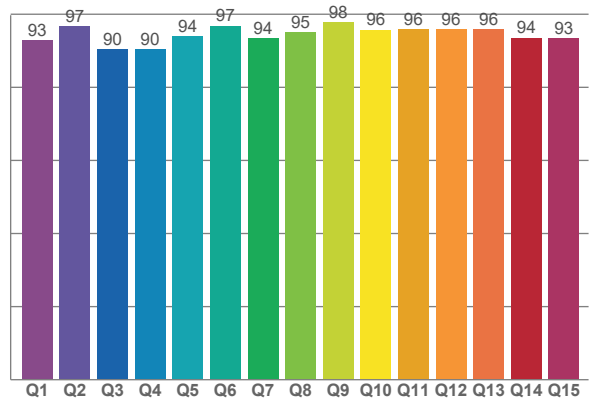
TM30 C Values:

C1	C2	C3	C4	C5	C6	C7	C8	C9	C10	C11	C12	C13	C14	C15	C16
94.5	96.1	95.0	95.4	93.5	96.7	93.5	98.3	93.8	89.8	89.9	91.2	93.7	91.1	91.7	88.9

CQS Q values:

Q1	Q2	Q3	Q4	Q5	Q6	Q7	Q8	Q9	Q10	Q11	Q12	Q13	Q14	Q15
92.8	96.7	90.3	90.4	94.1	96.8	93.5	95.0	97.9	95.7	95.8	95.9	95.9	93.6	93.4

CQS: 94.0



Color Parameters:

CCT	CRI	CRI R9	TM30 Rf	TM30 Rg	CQS	x	y	u	v	Δuv
3122 K	97.2	83.4	93.4	100.7	94.0	0.425	0.394	0.248	0.344	-0.0025

TM-30 Details

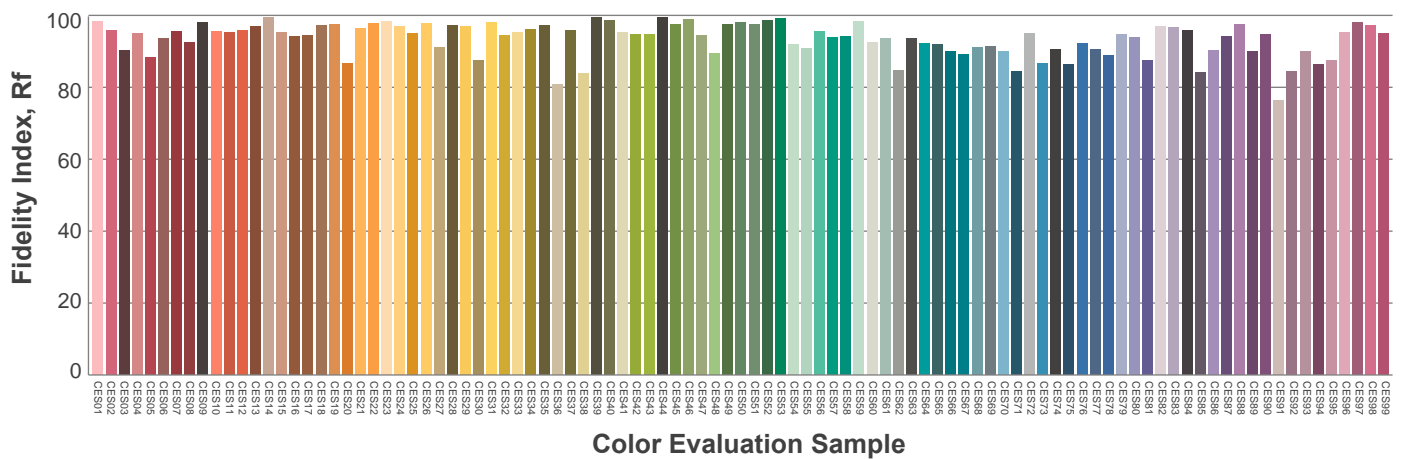
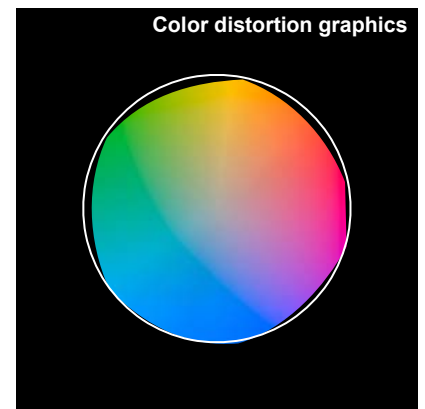
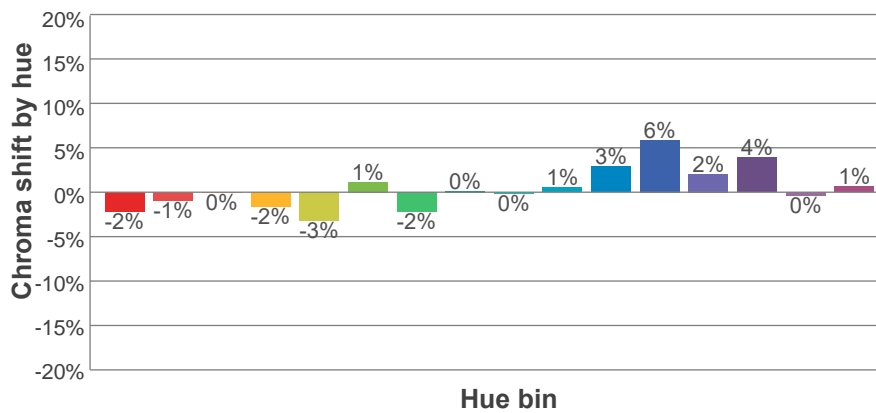
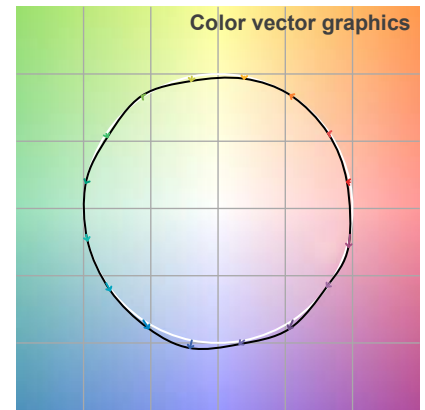
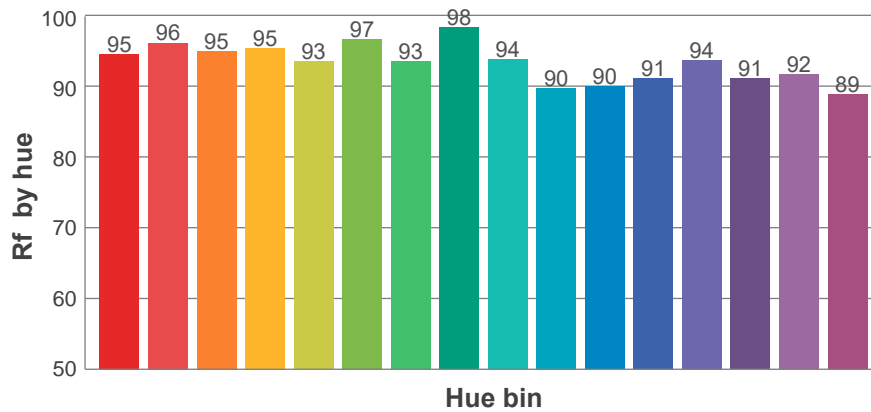
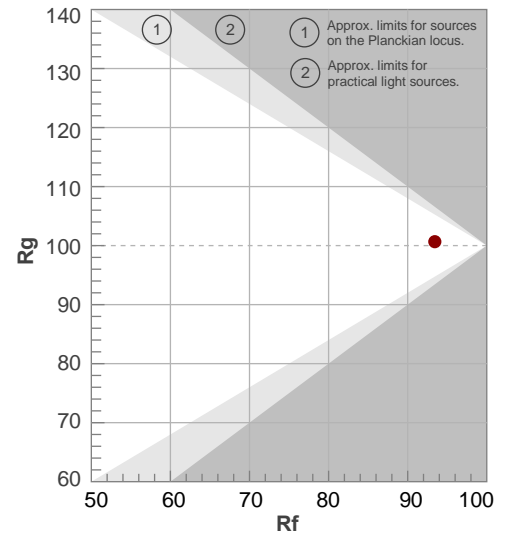
Rf 93.4

Fidelity index Rf

Rg 100.7

Gamut index Rg

Hue Bin	R _f	Shifts (%)	
		Chroma	Hue
1	95	-2%	1%
2	96	-1%	1%
3	95	0%	2%
4	95	-2%	0%
5	93	-3%	1%
6	97	1%	1%
7	93	-2%	2%
8	98	0%	1%
9	94	0%	4%
10	90	1%	6%
11	90	3%	7%
12	91	6%	0%
13	94	2%	-4%
14	91	4%	-6%
15	92	0%	-3%
16	89	1%	-9%



Aiming Angle

