

## Photometric / Colorimetric / Electric Report

Fixture Model:

200-HD-WD-R-WD2-40-DIM1-2-350-FLR-2-WW-20d

Trim Model:

FLR-2-WW-WH

Date:

2/25/2022



Light efficiency:

48 Lumen/Watt

Light quality:

CRI: 96.8

Color temperature:

2895 K

CIE 1931:

x: 0.442  
y: 0.400

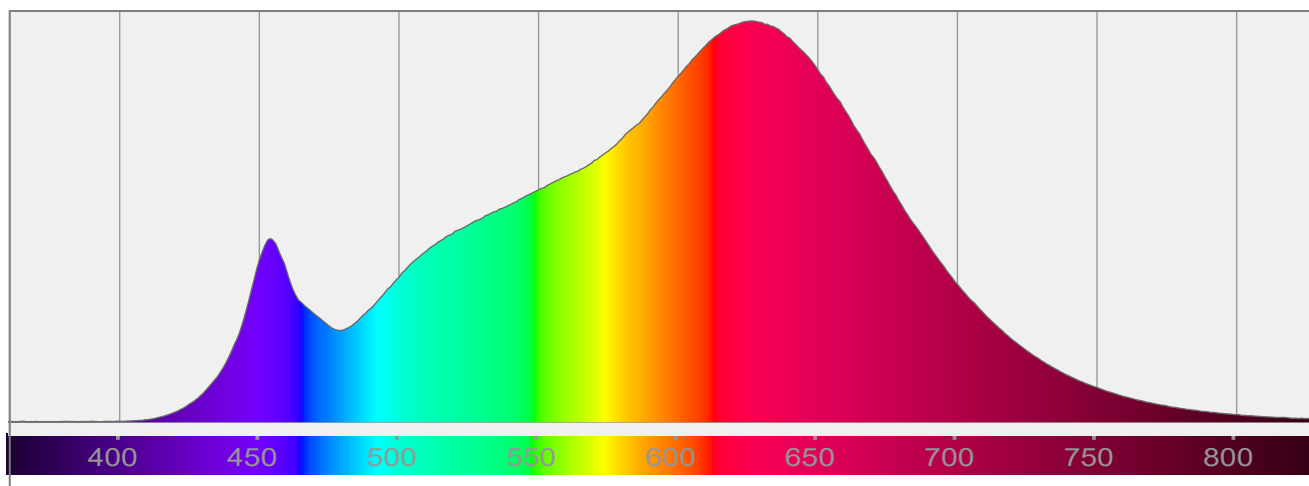
Output: 705 lm

Peak: 725 cd

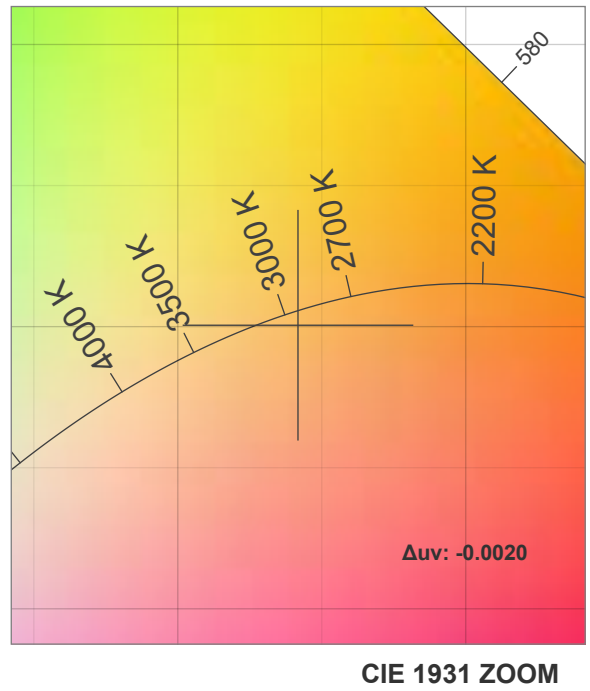
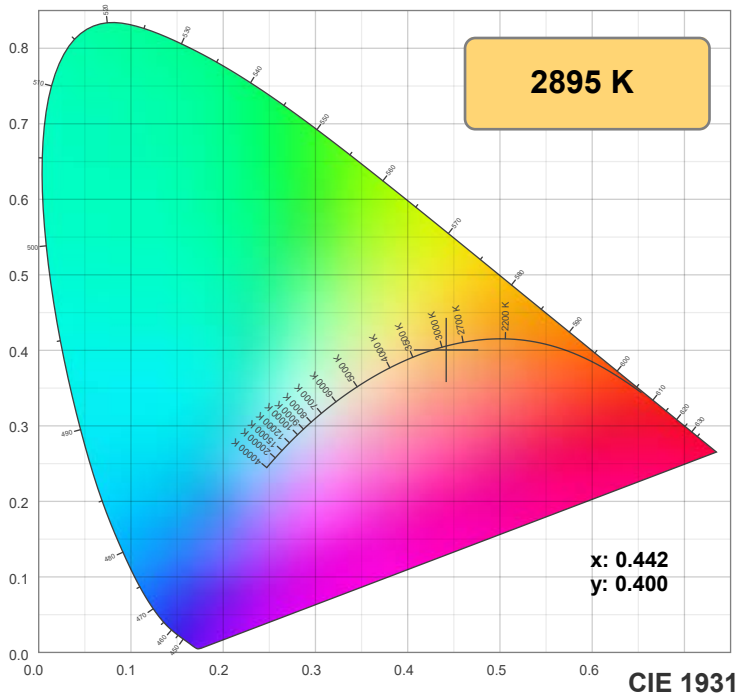
Power: 14.6 W

PF: 1.0

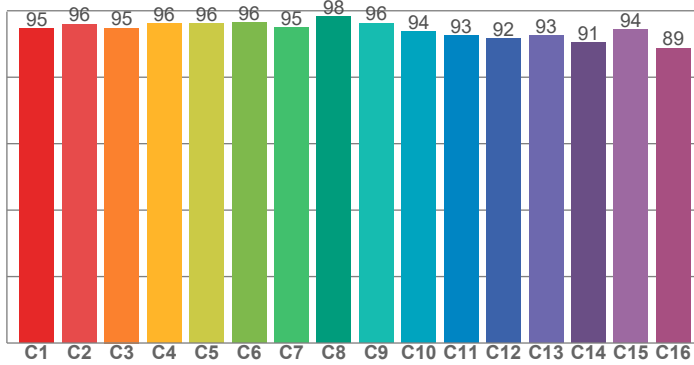
Spectra:



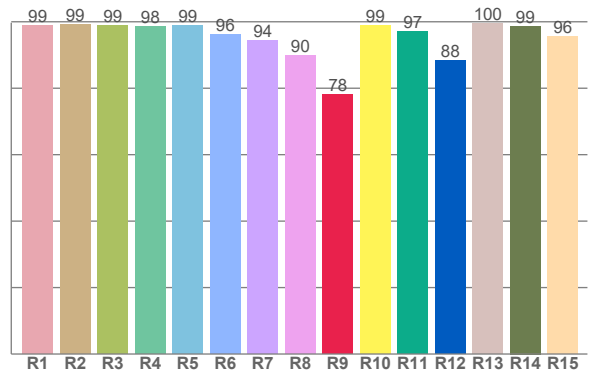
## Color Details



**TM-30: 94.4**



**CRI: 96.8 (R1-R8)**



**CRI R Values:**

R1	R2	R3	R4	R5	R6	R7	R8	R9	R10	R11	R12	R13	R14	R15
98.8	99.3	99.0	98.5	98.9	96.2	94.2	89.8	78.1	98.8	97.2	88.3	99.5	98.7	95.7

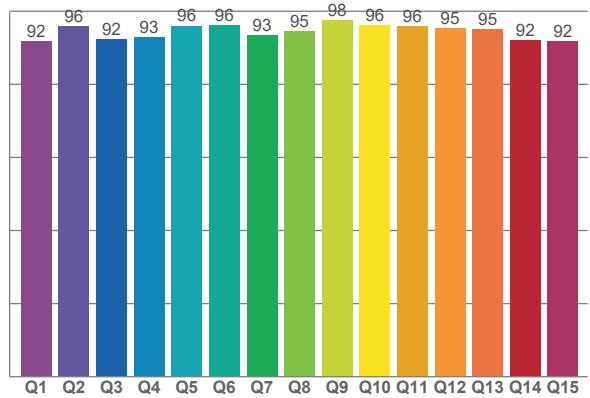
**TM30 C Values:**

C1	C2	C3	C4	C5	C6	C7	C8	C9	C10	C11	C12	C13	C14	C15	C16
94.6	96.0	94.8	96.0	96.1	96.5	95.0	98.2	96.3	93.7	92.7	91.6	92.6	90.5	94.3	88.8

**CQS Q values:**

Q1	Q2	Q3	Q4	Q5	Q6	Q7	Q8	Q9	Q10	Q11	Q12	Q13	Q14	Q15
91.9	95.9	92.2	92.9	96.0	96.2	93.5	94.5	97.6	96.1	96.0	95.5	95.0	92.1	91.9

**CQS: 94.1**



**Color Parameters:**

CCT	CRI	CRI R9	TM30 Rf	TM30 Rg	CQS	x	y	u	v	Δuv
2895 K	96.8	78.1	94.4	100.6	94.1	0.442	0.400	0.255	0.347	-0.0020

# TM-30 Details

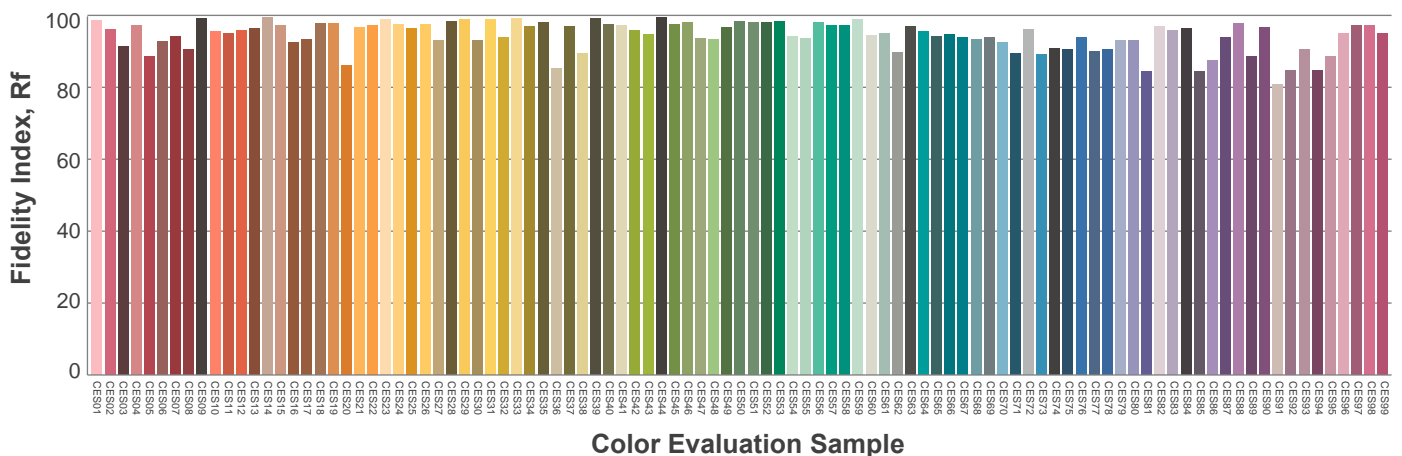
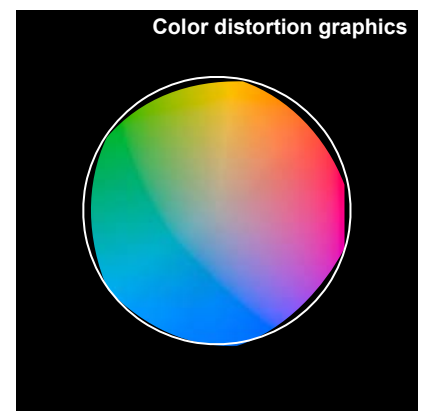
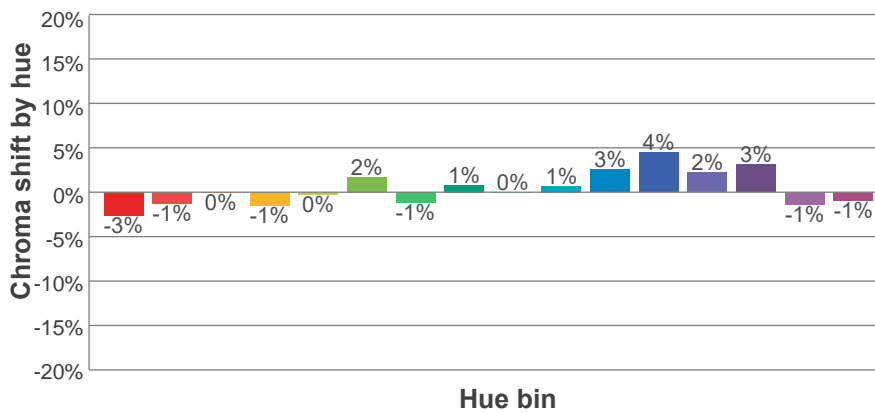
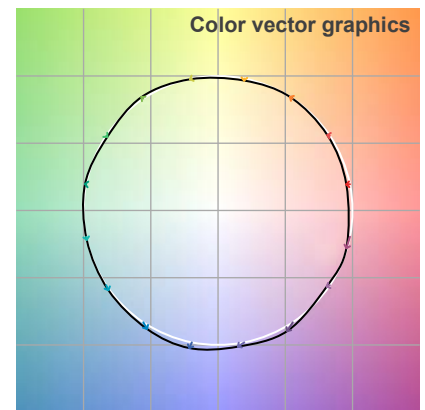
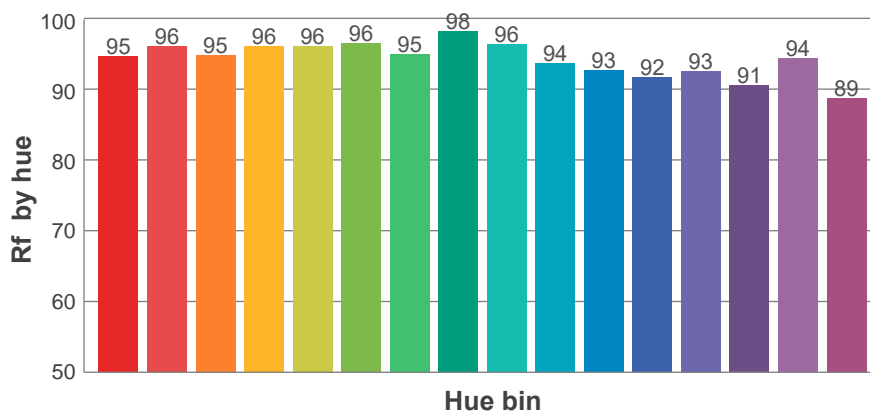
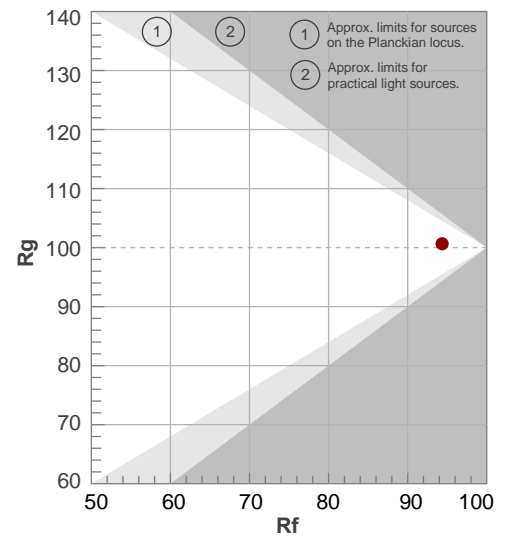
**Rf 94.4**

Fidelity index Rf

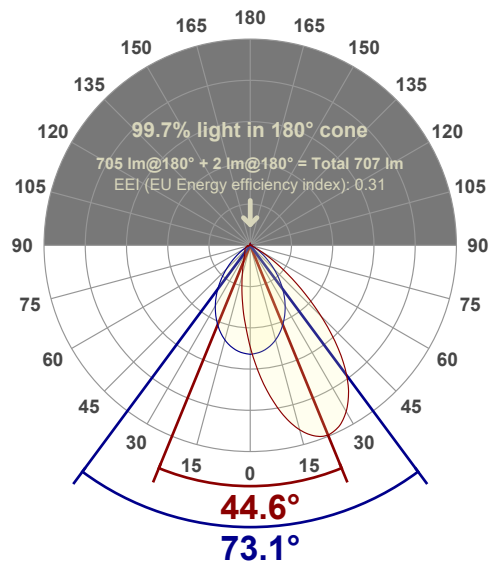
**Rg 100.6**

Gamut index Rg

Hue Bin	R <sub>f</sub>	Shifts (%)	
		Chroma	Hue
1	95	-3%	0%
2	96	-1%	1%
3	95	0%	2%
4	96	-1%	0%
5	96	0%	1%
6	96	2%	1%
7	95	-1%	0%
8	98	1%	0%
9	96	0%	2%
10	94	1%	4%
11	93	3%	5%
12	92	4%	-1%
13	93	2%	-5%
14	91	3%	-7%
15	94	-1%	-2%
16	89	-1%	-9%



## Angular Distribution Through 0° and 90° Planes



**Beam Angle: 73.1°W x 44.6°L**

## Beam Details

