

Photometric / Colorimetric / Electric Report

Fixture Model:

200-HD-S-HI3500-25-EL1-2-650-FLS-2-BV-NIC

Trim Model:

FLS-2-BV-WH

Date:

8/10/2022



Light efficiency:

66 Lumen/Watt

Light quality:

CRI: 94.4

Color temperature:

3478 K

CIE 1931:

x: 0.405
y: 0.388

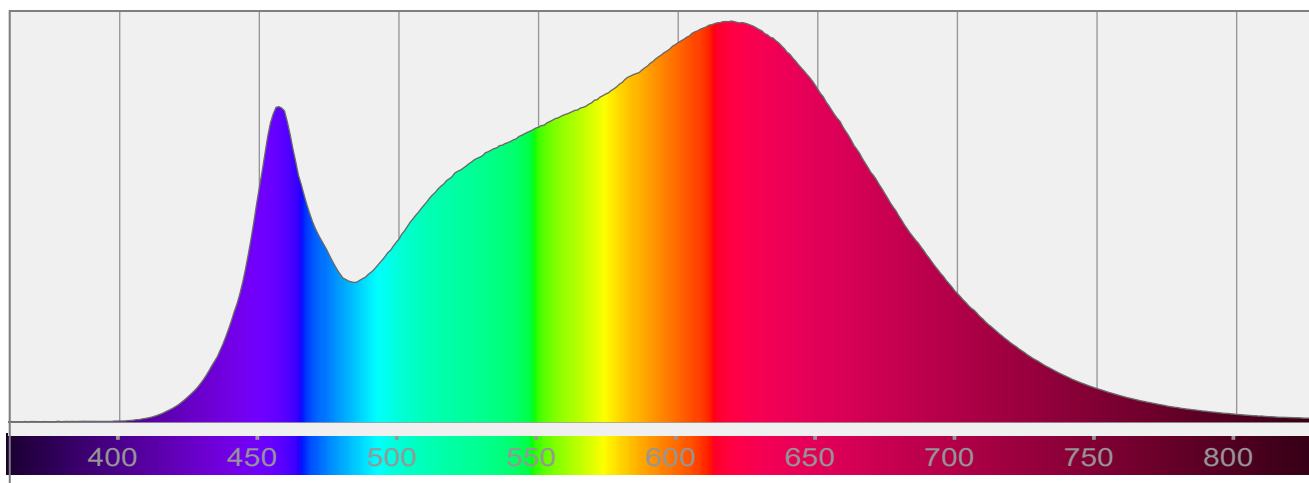
Output: 1733 lm

Peak: 5088 cd

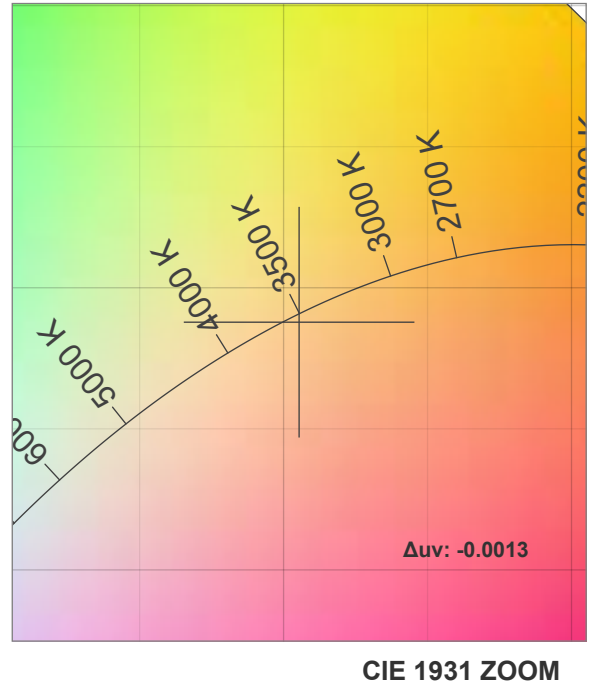
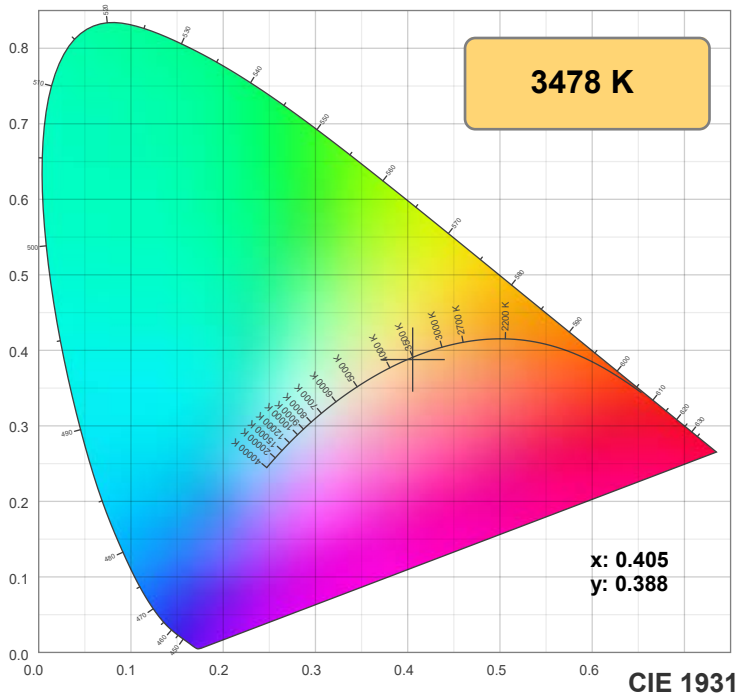
Power: 26.3 W

PF: 0.98

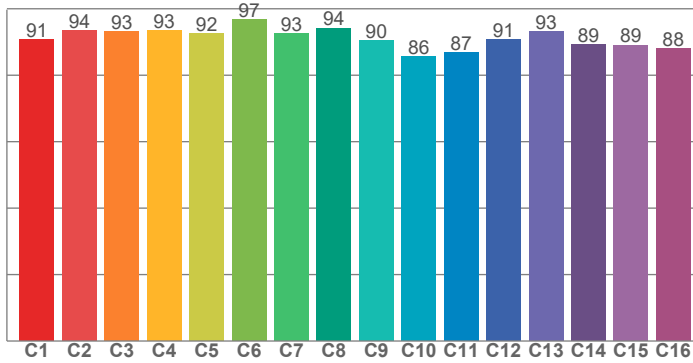
Spectra:



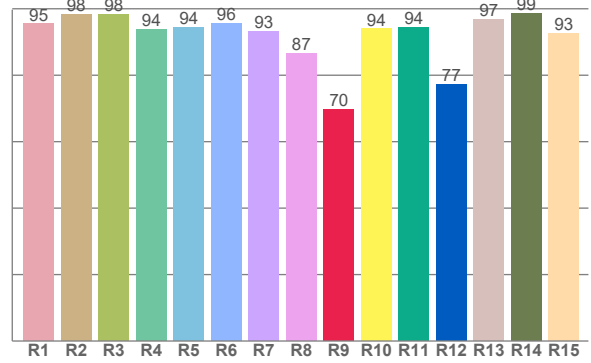
Color Details



TM-30: 91.1



CRI: 94.4 (R1-R8)



CRI R Values:

R1	R2	R3	R4	R5	R6	R7	R8	R9	R10	R11	R12	R13	R14	R15
95.4	98.2	98.3	93.8	94.3	95.7	93.3	86.6	69.7	93.9	94.4	77.3	96.7	98.7	92.7

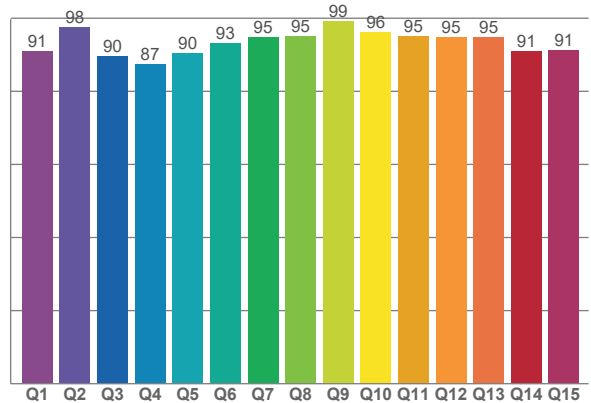
TM30 C Values:

C1	C2	C3	C4	C5	C6	C7	C8	C9	C10	C11	C12	C13	C14	C15	C16
90.8	93.5	93.1	93.5	92.4	96.7	92.6	94.2	90.4	85.5	86.8	90.7	93.2	89.3	89.1	88.0

CQS Q values:

Q1	Q2	Q3	Q4	Q5	Q6	Q7	Q8	Q9	Q10	Q11	Q12	Q13	Q14	Q15
91.0	97.6	89.5	87.3	90.5	93.0	94.8	95.2	99.2	96.2	95.0	94.8	94.8	91.0	91.2

CQS: 92.7



Color Parameters:

CCT	CRI	CRI R9	TM30 Rf	TM30 Rg	CQS	x	y	u	v	Δuv
3478 K	94.4	69.7	91.1	98.0	92.7	0.405	0.388	0.237	0.340	-0.0013

TM-30 Details

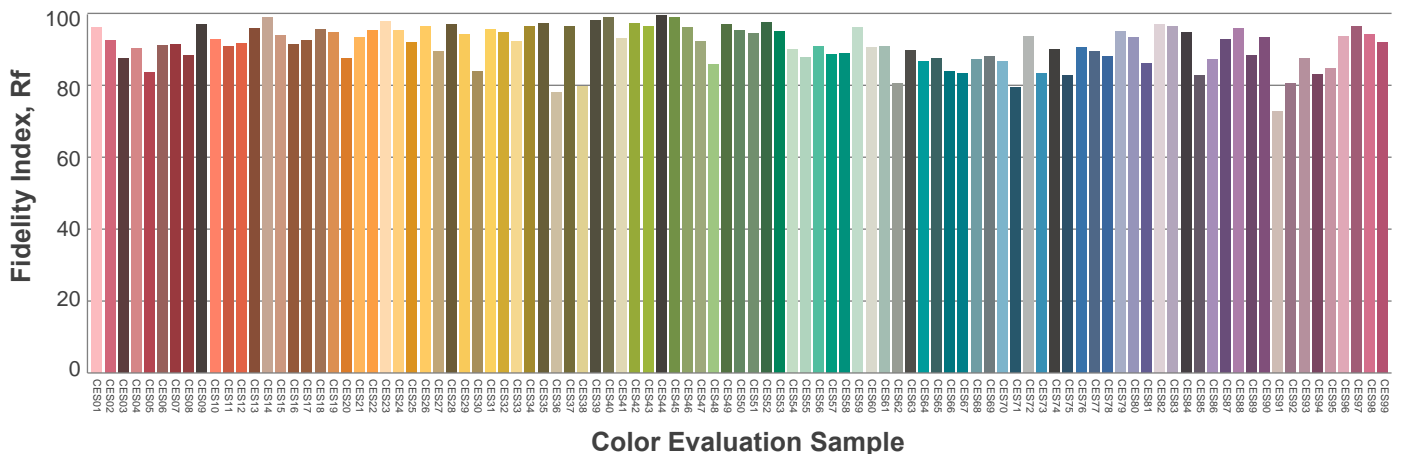
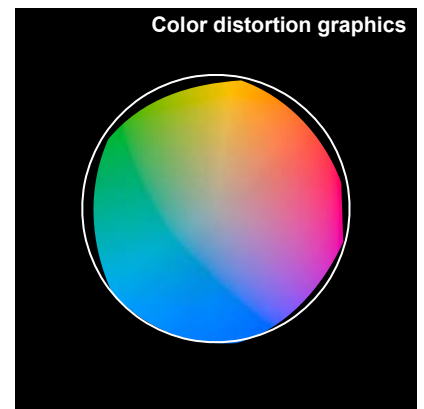
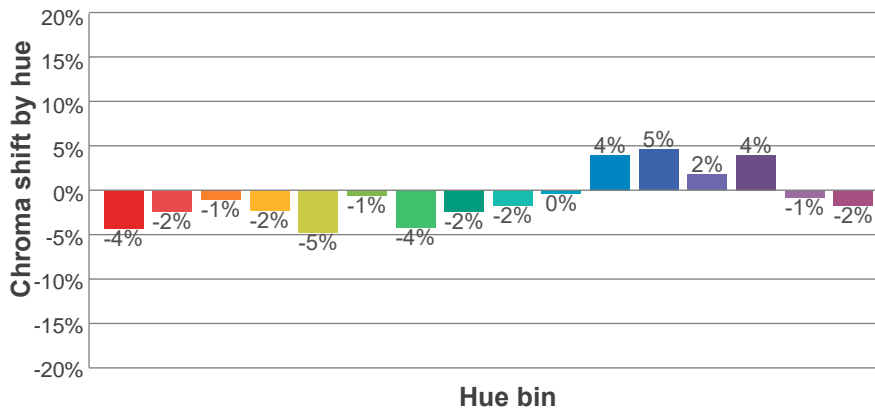
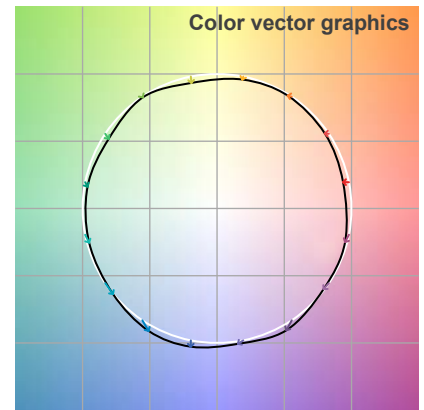
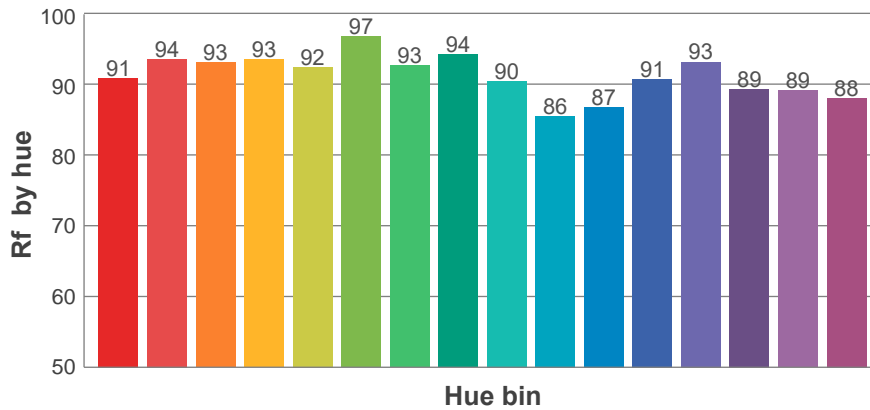
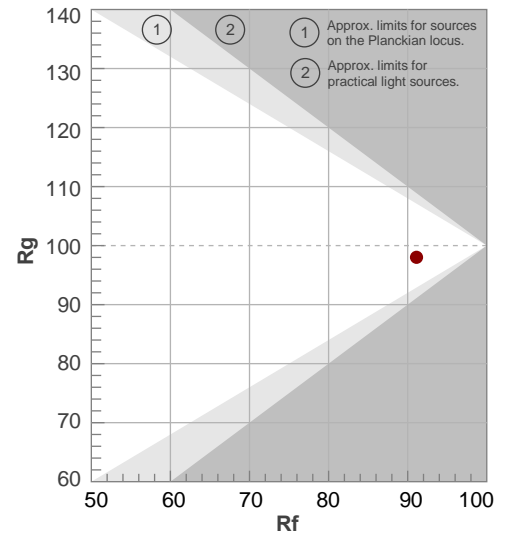
Rf 91.1

Fidelity index Rf

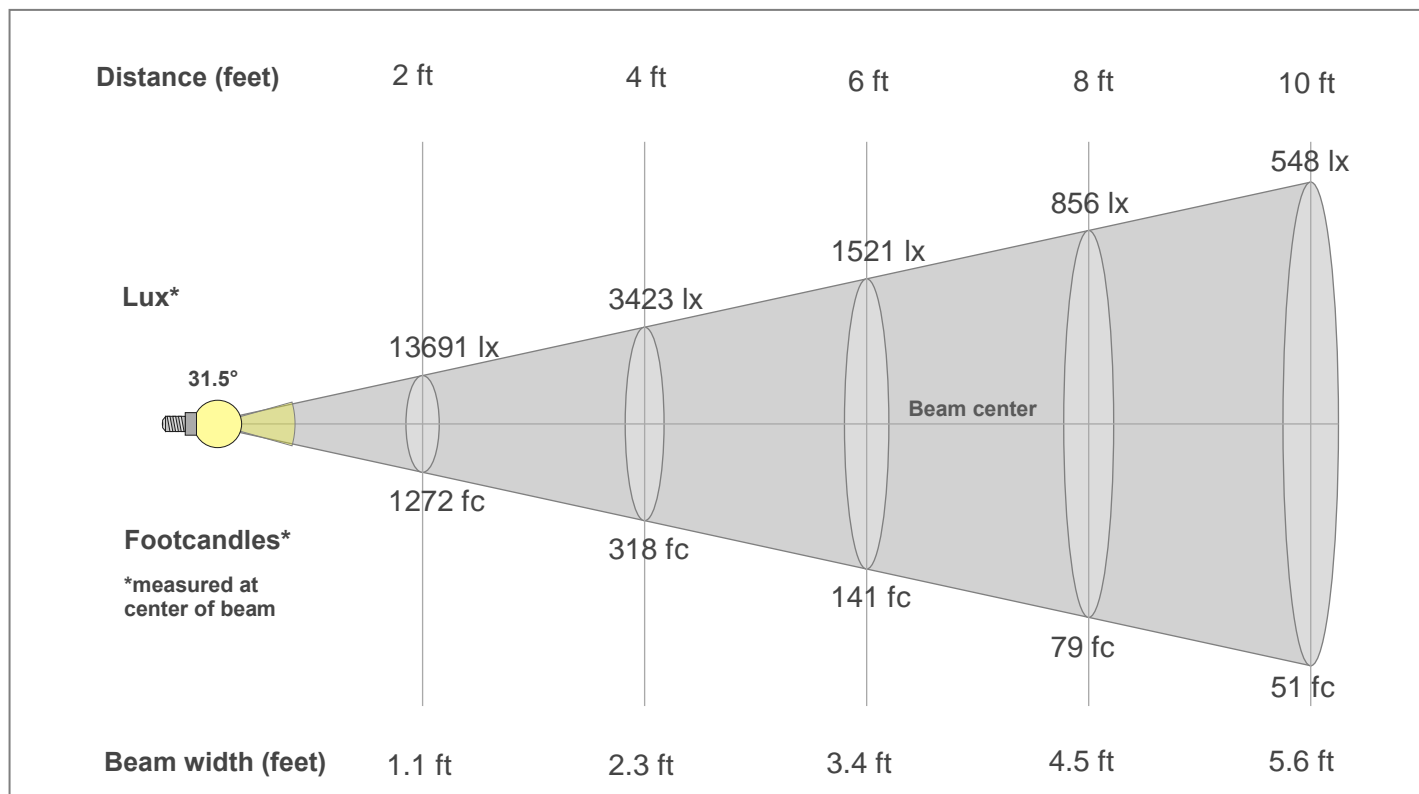
Rg 98.0

Gamut index Rg

Hue Bin	R _f	Shifts (%)	
		Chroma	Hue
1	91	-4%	1%
2	94	-2%	2%
3	93	-1%	3%
4	93	-2%	0%
5	92	-5%	0%
6	97	-1%	0%
7	93	-4%	2%
8	94	-2%	3%
9	90	-2%	6%
10	86	0%	10%
11	87	4%	8%
12	91	5%	1%
13	93	2%	-4%
14	89	4%	-7%
15	89	-1%	-6%
16	88	-2%	-6%



Beam Details



Beam Intensities from 1-20m

1m	2m	3m	4m	5m	6m	7m	8m	9m	10m	11m	12m	13m	14m	15m	16m	17m	18m	19m	20m
3.3ft	6.6ft	9.8ft	13.1ft	16.4ft	19.7ft	23ft	26.2ft	29.5ft	32.8ft	36.1ft	39.4ft	42.7ft	45.9ft	49.2ft	52.5ft	55.8ft	59.1ft	62.3ft	65.6ft
5088lx	1272lx	565lx	318lx	204lx	141lx	104lx	79lx	63lx	51lx	42lx	35lx	30lx	26lx	23lx	20lx	18lx	16lx	14lx	13lx
472.7fc	118.2fc	52.5fc	29.5fc	18.9fc	13.1fc	9.6fc	7.4fc	5.8fc	4.7fc	3.9fc	3.3fc	2.8fc	2.4fc	2.1fc	1.8fc	1.6fc	1.5fc	1.3fc	1.2fc

Intensities in 0° c-plane

0°	2°	4°	6°	8°	10°	12°	14°	16°	18°	20°	22°	24°	26°	28°	30°	32°	34°	36°	38°
5088	5042	4908	4690	4389	4004	3541	3021	2472	1938	1464	1085	805	607	468	368	294	236	189	152
100%	99%	96%	92%	86%	79%	70%	59%	49%	38%	29%	21%	16%	12%	9%	7%	6%	5%	4%	3%

Intensities in 90° c-plane

0°	2°	4°	6°	8°	10°	12°	14°	16°	18°	20°	22°	24°	26°	28°	30°	32°	34°	36°	38°
5088	5042	4908	4690	4389	4004	3541	3021	2472	1938	1464	1085	805	607	468	368	294	236	189	152
100%	99%	96%	92%	86%	79%	70%	59%	49%	38%	29%	21%	16%	12%	9%	7%	6%	5%	4%	3%

Intensities in 180° c-plane

0°	2°	4°	6°	8°	10°	12°	14°	16°	18°	20°	22°	24°	26°	28°	30°	32°	34°	36°	38°
5088	5042	4908	4690	4389	4004	3541	3021	2472	1938	1464	1085	805	607	468	368	294	236	189	152
100%	99%	96%	92%	86%	79%	70%	59%	49%	38%	29%	21%	16%	12%	9%	7%	6%	5%	4%	3%

Intensities in 270° c-plane

0°	2°	4°	6°	8°	10°	12°	14°	16°	18°	20°	22°	24°	26°	28°	30°	32°	34°	36°	38°
5088	5042	4908	4690	4389	4004	3541	3021	2472	1938	1464	1085	805	607	468	368	294	236	189	152
100%	99%	96%	92%	86%	79%	70%	59%	49%	38%	29%	21%	16%	12%	9%	7%	6%	5%	4%	3%

Beam angle 50%	Field angle 10%	Cut-off angle 2.5%	Intensity ratio in 120°	Intensity ratio in 90°
31.5°	54.6°	79.5°	99.1%	97.2%