

Photometric / Colorimetric / Electric Report

Fixture Model:

200-HD-R-HI3500-60-EL1-2-650-FLR-2-BV-NIC-30d

Trim Model:

FLR-2-BV-WH

Date:

8/19/2022



Light efficiency:

56 Lumen/Watt

Light quality:

CRI: 94.5

Color temperature:

3515 K

CIE 1931:

x: 0.403
y: 0.386

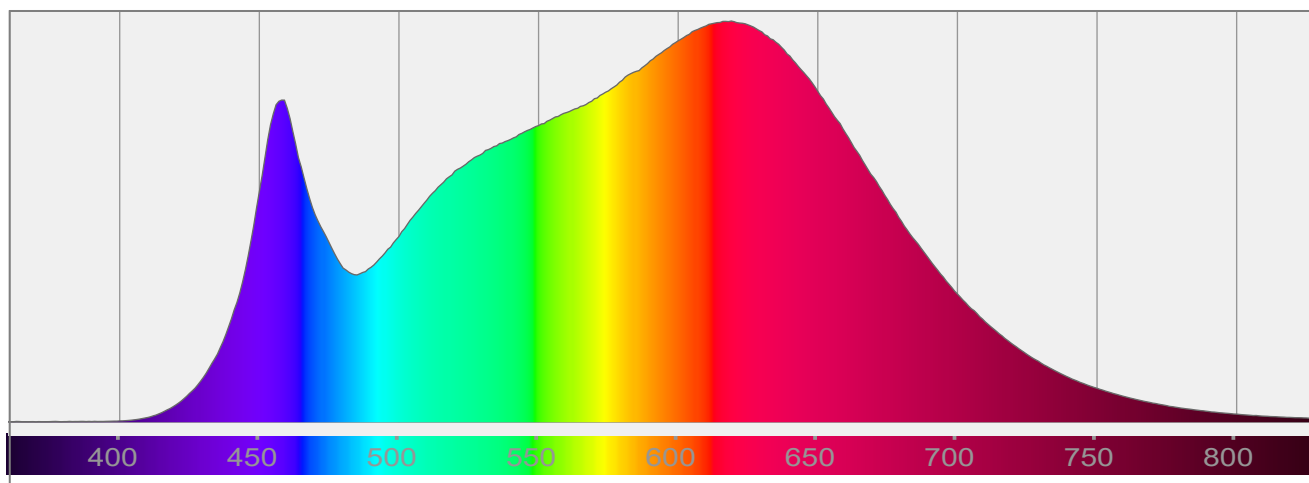
Output: 1466 lm

Peak: 2304 cd

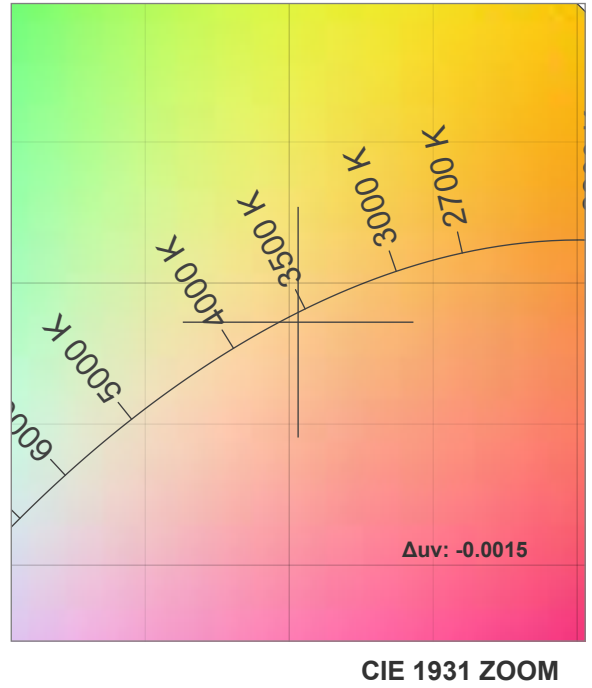
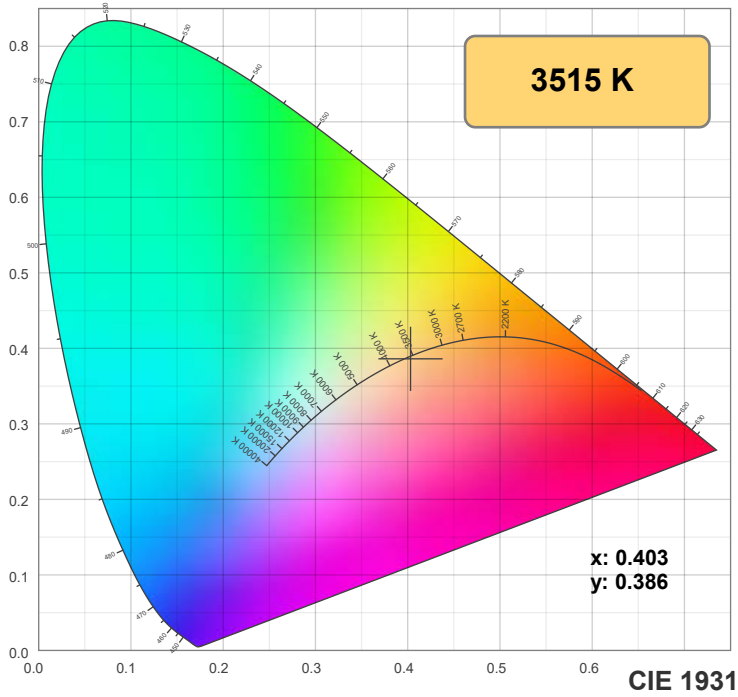
Power: 26.3 W

PF: 0.98

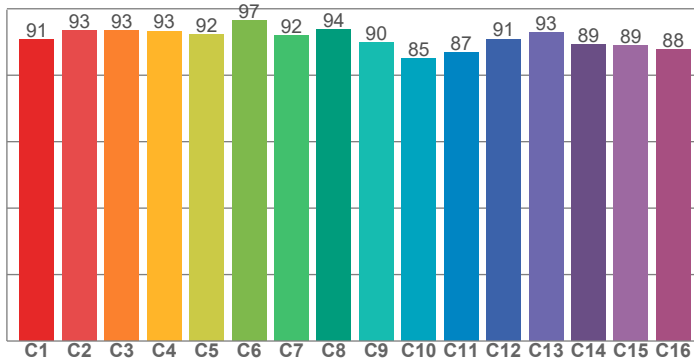
Spectra:



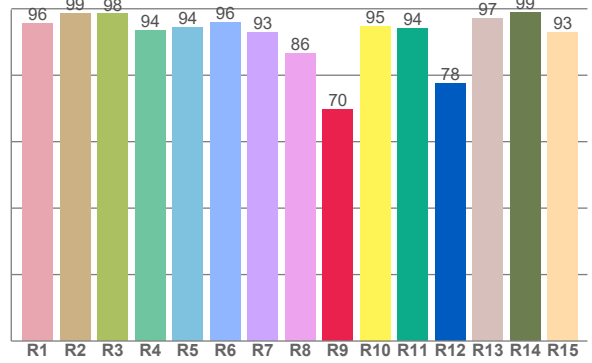
Color Details



TM-30: 90.9



CRI: 94.5 (R1-R8)



CRI R Values:

R1	R2	R3	R4	R5	R6	R7	R8	R9	R10	R11	R12	R13	R14	R15
95.6	98.6	98.4	93.5	94.4	95.8	92.9	86.4	69.8	94.8	94.1	77.5	97.0	99.0	92.8

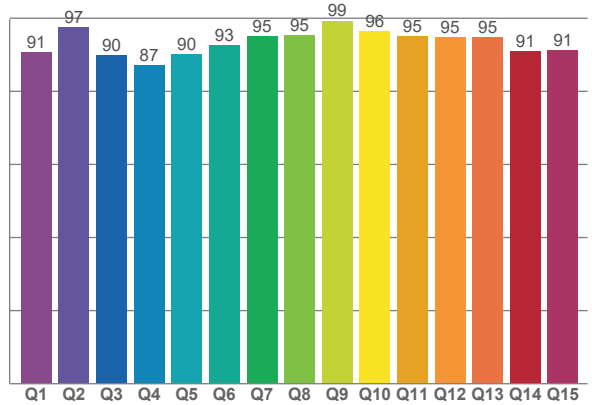
TM30 C Values:

C1	C2	C3	C4	C5	C6	C7	C8	C9	C10	C11	C12	C13	C14	C15	C16
90.6	93.5	93.4	93.3	92.2	96.5	92.0	93.6	89.8	85.1	86.9	90.9	92.9	89.2	88.8	87.8

CQS Q values:

Q1	Q2	Q3	Q4	Q5	Q6	Q7	Q8	Q9	Q10	Q11	Q12	Q13	Q14	Q15
90.7	97.5	89.9	87.2	90.1	92.6	95.0	95.2	99.3	96.5	95.1	94.7	94.8	91.0	91.2

CQS: 92.6



Color Parameters:

CCT	CRI	CRI R9	TM30 Rf	TM30 Rg	CQS	x	y	u	v	Δuv
3515 K	94.5	69.8	90.9	97.7	92.6	0.403	0.386	0.236	0.339	-0.0015

TM-30 Details

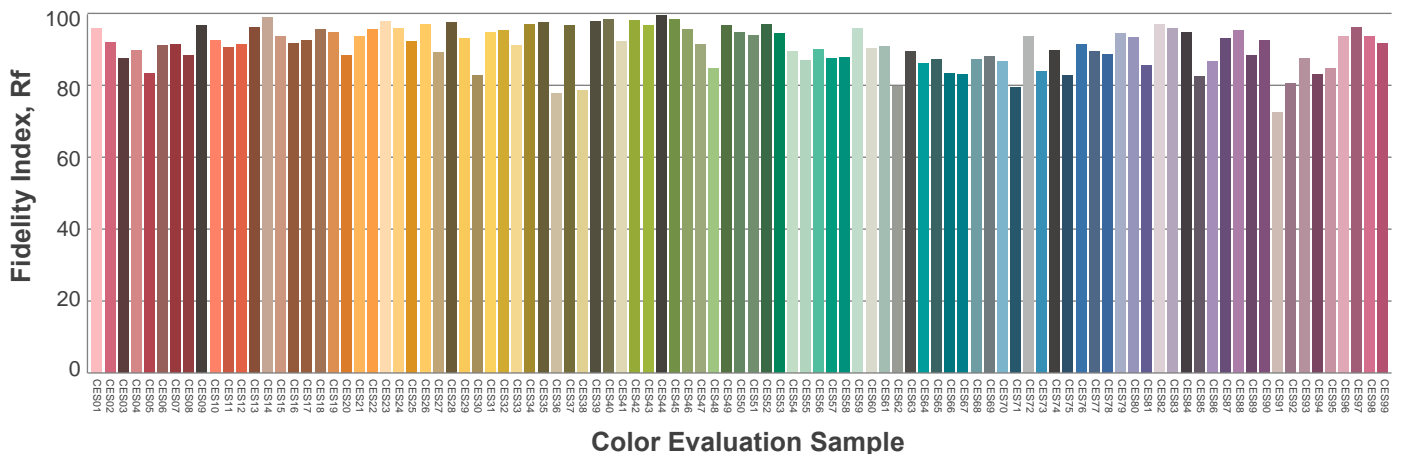
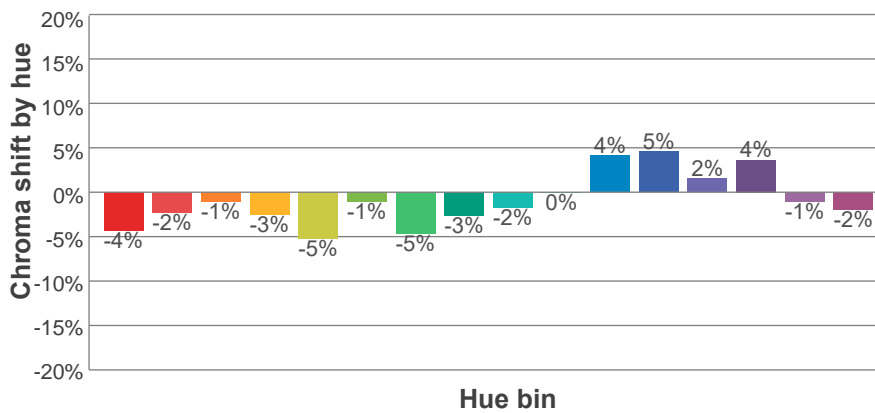
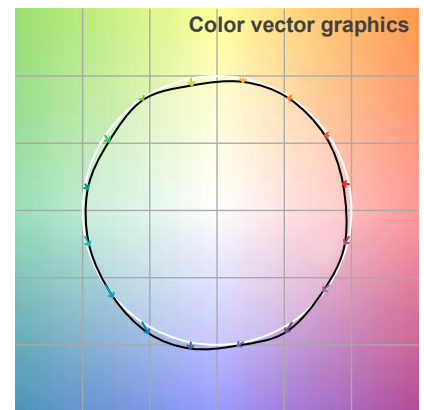
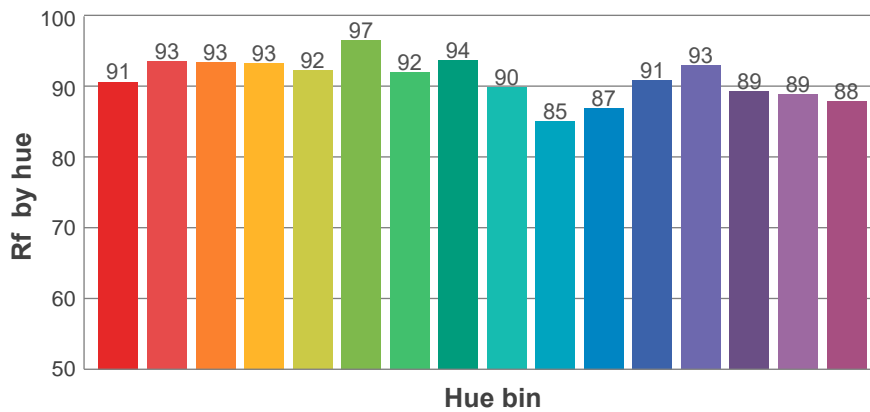
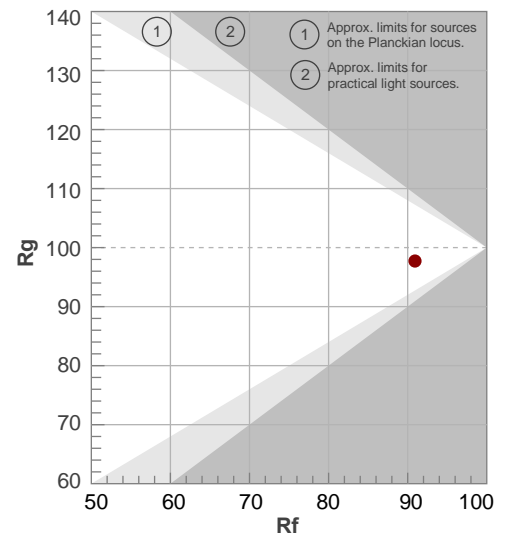
Rf 90.9

Fidelity index Rf

Rg 97.7

Gamut index Rg

Hue Bin	R _f	Shifts (%)	
		Chroma	Hue
1	91	-4%	1%
2	93	-2%	2%
3	93	-1%	3%
4	93	-3%	0%
5	92	-5%	0%
6	97	-1%	0%
7	92	-5%	2%
8	94	-3%	3%
9	90	-2%	7%
10	85	0%	10%
11	87	4%	8%
12	91	5%	0%
13	93	2%	-5%
14	89	4%	-8%
15	89	-1%	-6%
16	88	-2%	-6%



Aiming Angle

