

## Photometric / Colorimetric / Electric Report

Fixture Model:

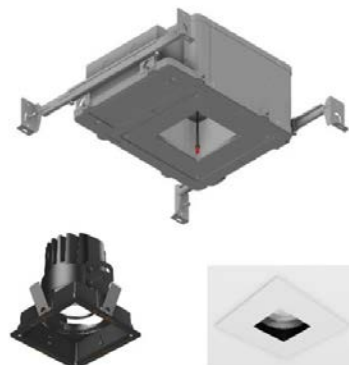
200-HD-IC-S-HI3500-40-EL1-2-500-FLS-2-30d

Trim Model:

FLS-2-WH

Date:

8/11/2022



Light efficiency:

43 Lumen/Watt

Light quality:

CRI: 94.8

Color temperature:

3467 K

CIE 1931:

x: 0.406  
y: 0.388

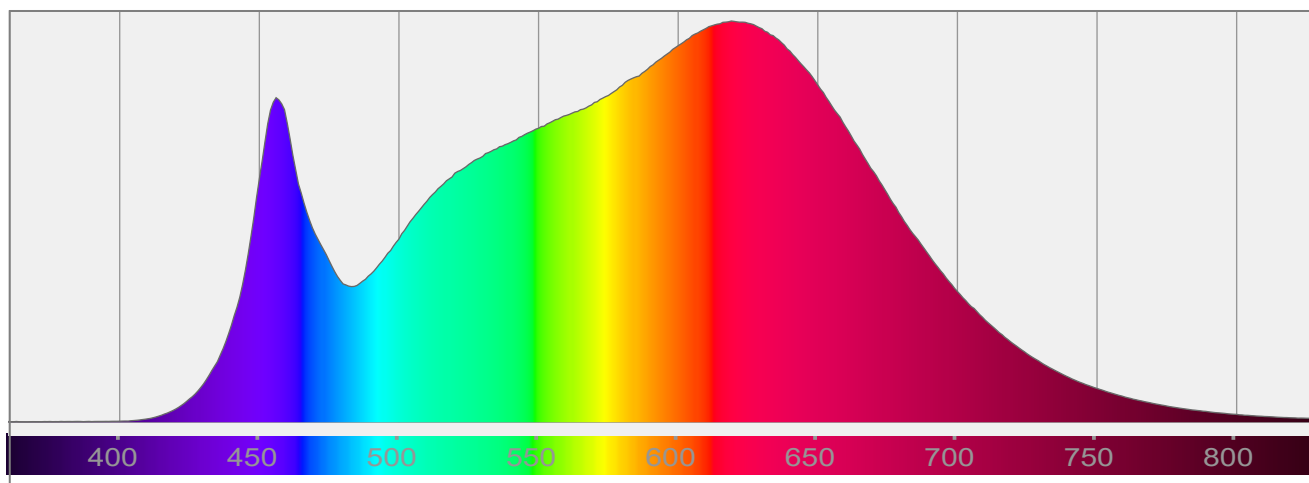
Output: 831 lm

Peak: 2718 cd

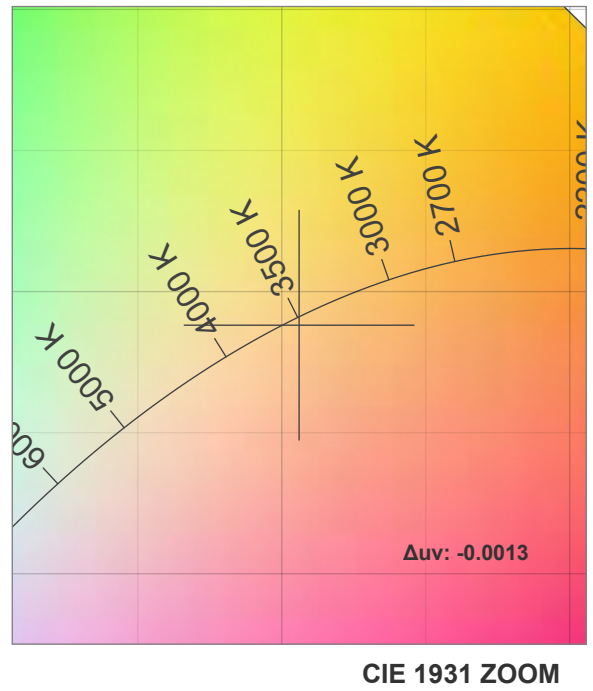
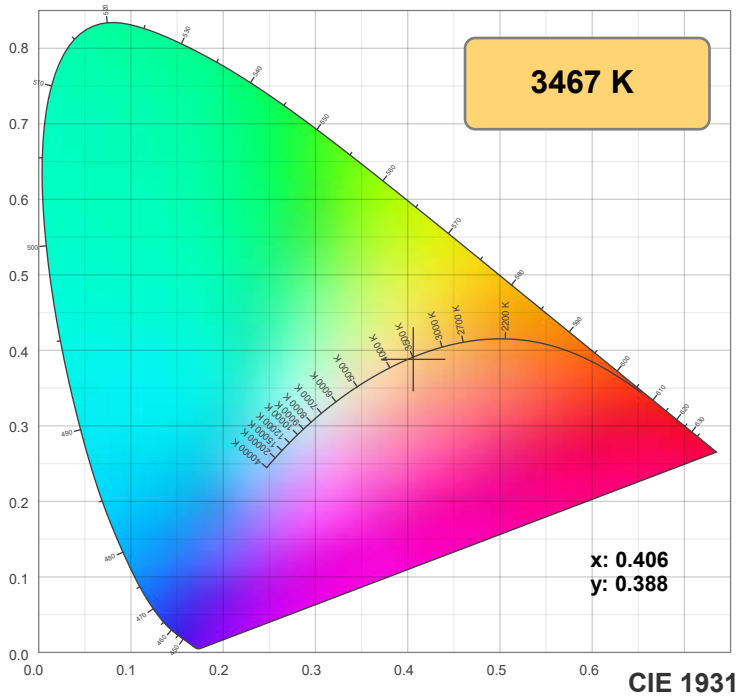
Power: 19.5 W

PF: 0.98

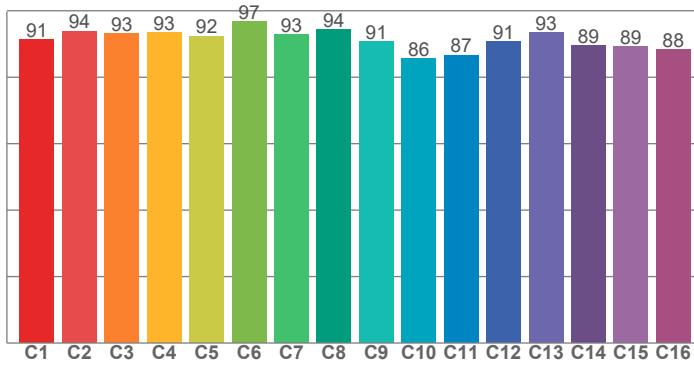
Spectra:



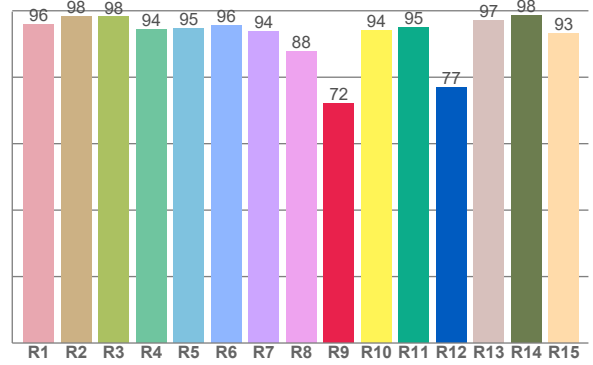
## Color Details



**TM-30: 91.3**



**CRI: 94.8 (R1-R8)**



**CRI R Values:**

R1	R2	R3	R4	R5	R6	R7	R8	R9	R10	R11	R12	R13	R14	R15
95.9	98.3	98.1	94.4	94.7	95.7	93.7	87.6	72.0	94.1	95.0	76.9	97.0	98.5	93.3

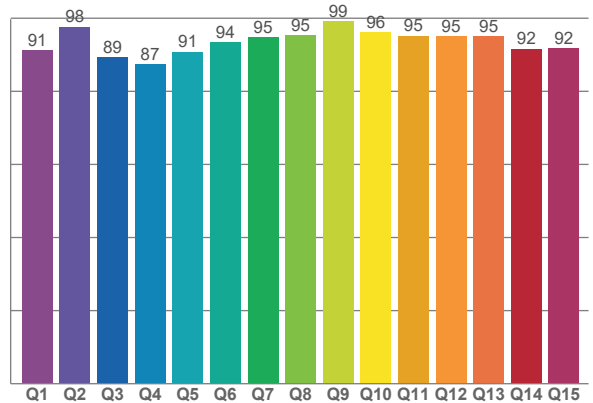
**TM30 C Values:**

C1	C2	C3	C4	C5	C6	C7	C8	C9	C10	C11	C12	C13	C14	C15	C16
91.3	93.9	93.3	93.5	92.4	96.8	92.8	94.5	90.6	85.7	86.7	90.7	93.4	89.5	89.3	88.3

**CQS Q values:**

Q1	Q2	Q3	Q4	Q5	Q6	Q7	Q8	Q9	Q10	Q11	Q12	Q13	Q14	Q15
91.3	97.7	89.3	87.4	90.8	93.5	94.9	95.3	99.1	96.2	95.2	95.0	95.2	91.7	91.8

**CQS: 92.9**



**Color Parameters:**

CCT	CRI	CRI R9	TM30 Rf	TM30 Rg	CQS	x	y	u	v	Δuv
3467 K	94.8	72.0	91.3	98.3	92.9	0.406	0.388	0.237	0.340	-0.0013

# TM-30 Details

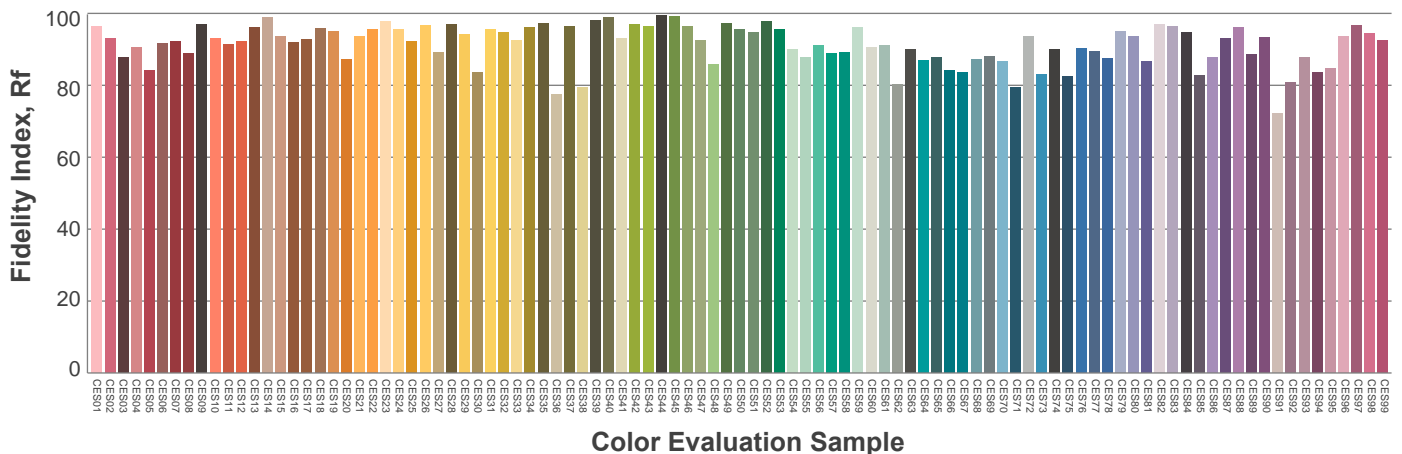
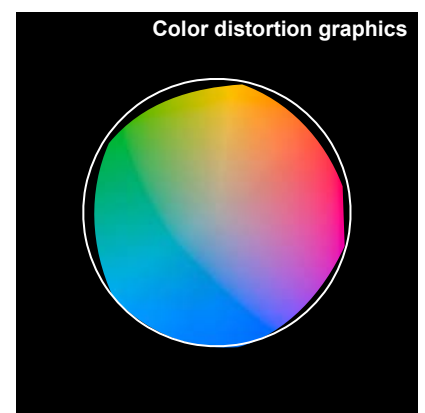
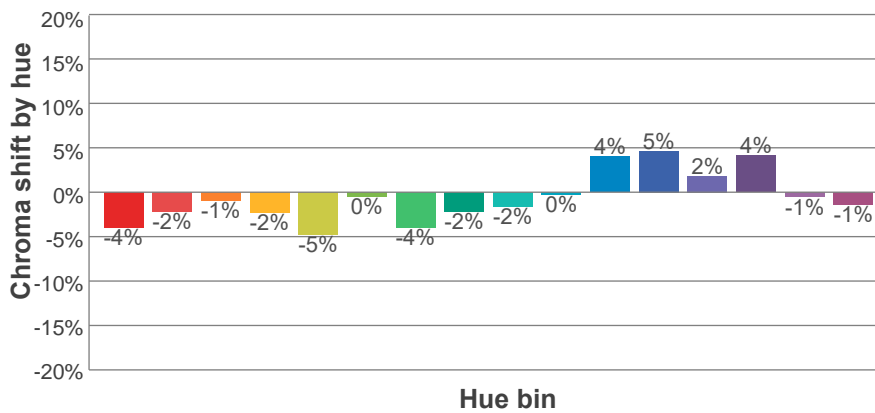
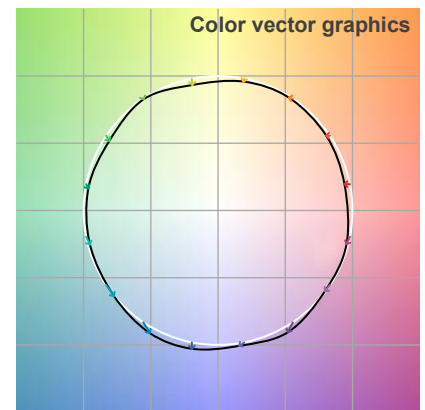
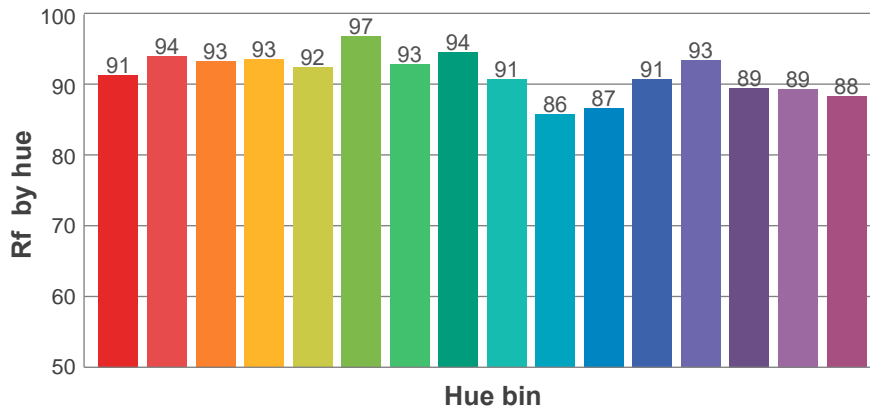
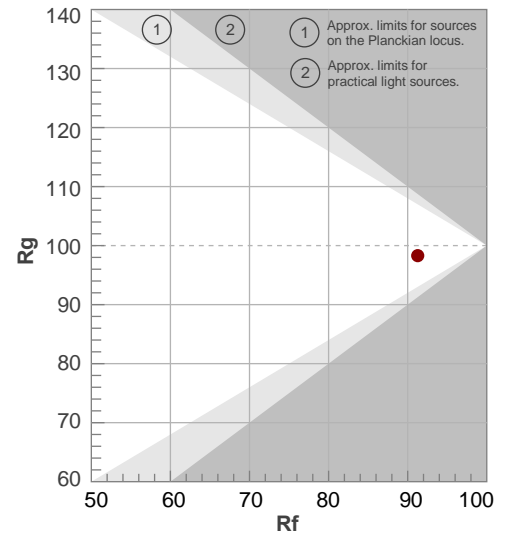
**Rf 91.3**

Fidelity index Rf

**Rg 98.3**

Gamut index Rg

Hue Bin	R <sub>f</sub>	Shifts (%)	
		Chroma	Hue
1	91	-4%	1%
2	94	-2%	2%
3	93	-1%	3%
4	93	-2%	0%
5	92	-5%	0%
6	97	0%	0%
7	93	-4%	2%
8	94	-2%	3%
9	91	-2%	6%
10	86	0%	10%
11	87	4%	8%
12	91	5%	1%
13	93	2%	-4%
14	89	4%	-7%
15	89	-1%	-6%
16	88	-1%	-6%



## Aiming Angle

