

## Photometric / Colorimetric / Electric Report

Fixture Model:

200-HD-IC-R-HI3500-40-EL1-2-500-FLR-2-WW-20d

Trim Model:

FLR-2-WW-WH

Date:

8/10/2022



Light efficiency:

65 Lumen/Watt

Light quality:

CRI: 94.7

Color temperature:

3440 K

CIE 1931:

x: 0.408  
y: 0.389

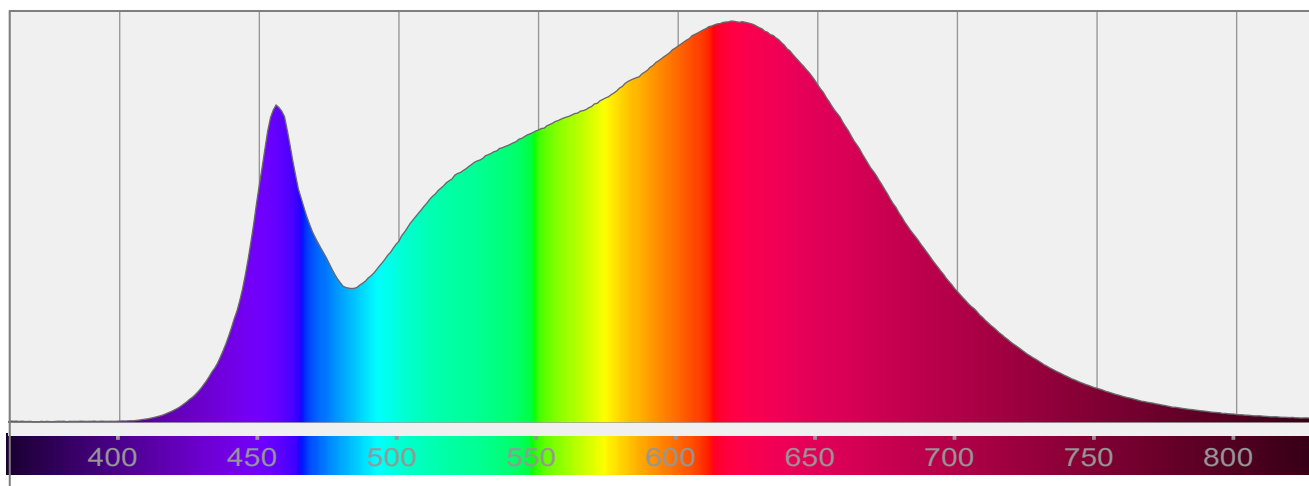
Output: 1267 lm

Peak: 1279 cd

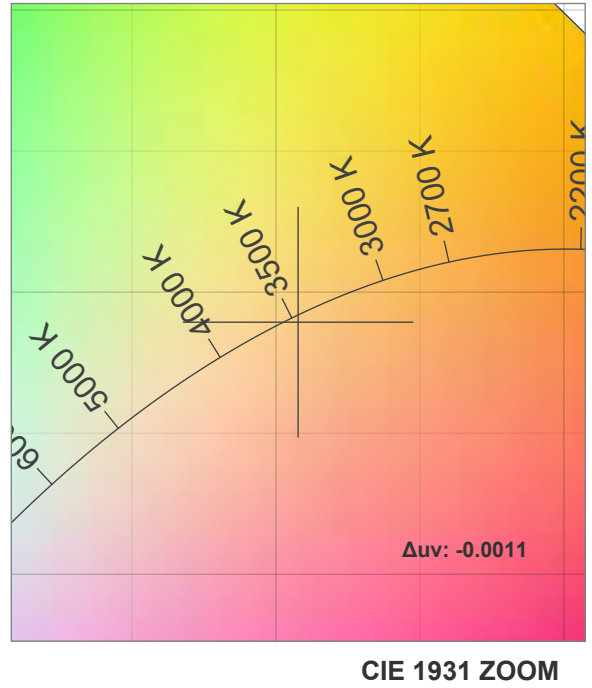
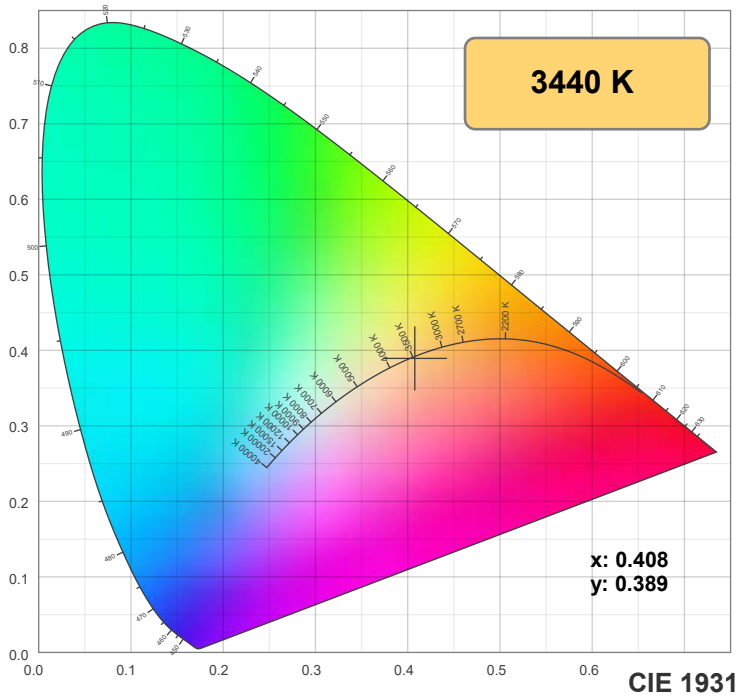
Power: 19.5 W

PF: 0.98

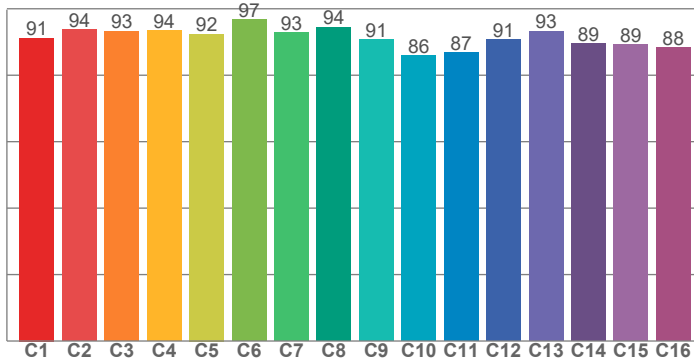
Spectra:



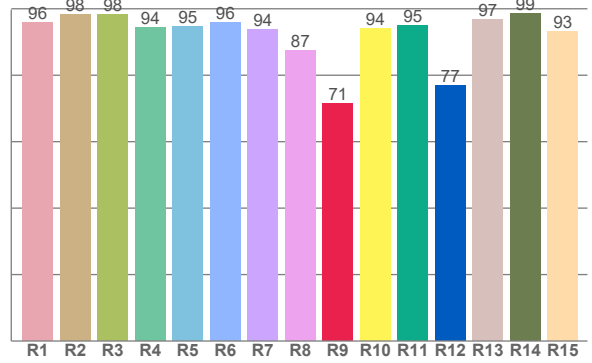
## Color Details



**TM-30: 91.3**



**CRI: 94.7 (R1-R8)**



**CRI R Values:**

R1	R2	R3	R4	R5	R6	R7	R8	R9	R10	R11	R12	R13	R14	R15
95.8	98.2	98.2	94.3	94.6	95.8	93.7	87.4	71.4	94.0	95.0	77.0	96.9	98.5	93.0

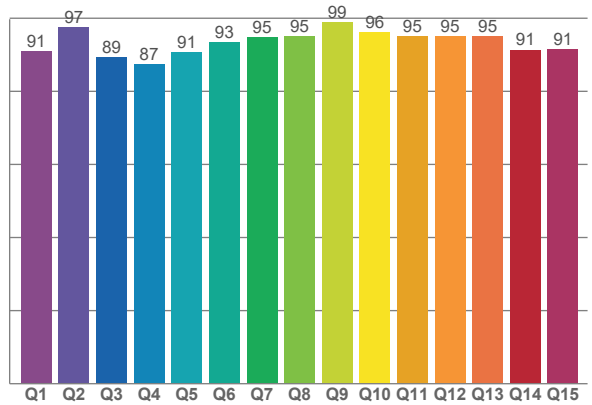
**TM30 C Values:**

C1	C2	C3	C4	C5	C6	C7	C8	C9	C10	C11	C12	C13	C14	C15	C16
91.2	93.9	93.3	93.5	92.4	96.8	92.8	94.5	90.7	85.8	86.8	90.7	93.3	89.4	89.2	88.2

**CQS Q values:**

Q1	Q2	Q3	Q4	Q5	Q6	Q7	Q8	Q9	Q10	Q11	Q12	Q13	Q14	Q15
91.0	97.4	89.3	87.5	90.8	93.4	94.8	95.2	98.9	96.1	95.2	95.0	95.1	91.4	91.5

**CQS: 92.8**



**Color Parameters:**

CCT	CRI	CRI R9	TM30 Rf	TM30 Rg	CQS	x	y	u	v	Δuv
3440 K	94.7	71.4	91.3	98.2	92.8	0.408	0.389	0.238	0.341	-0.0011

# TM-30 Details

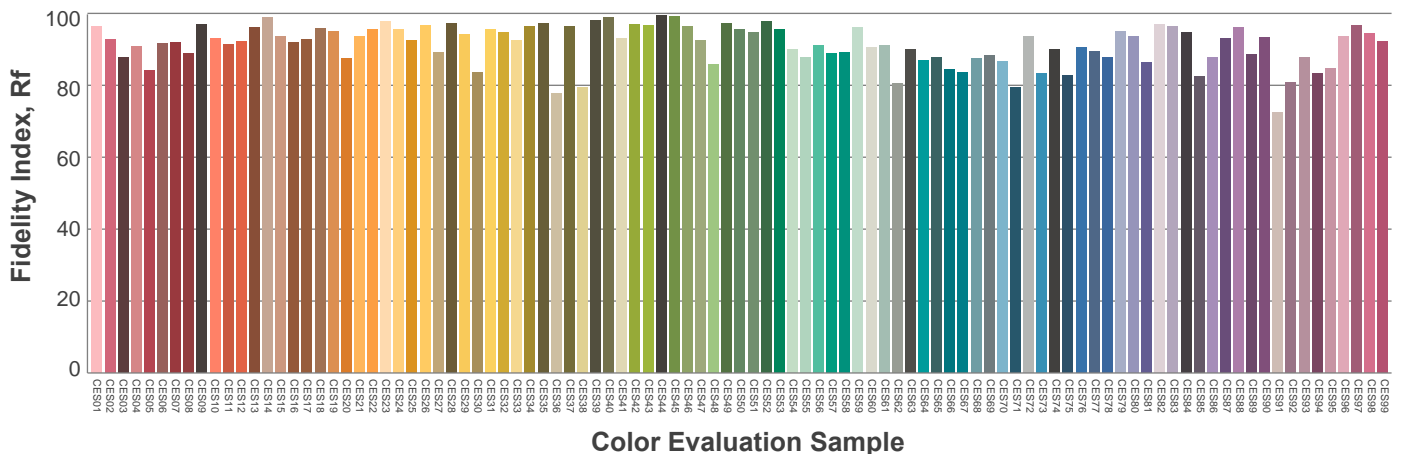
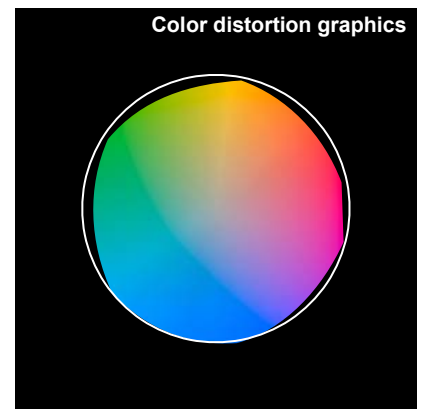
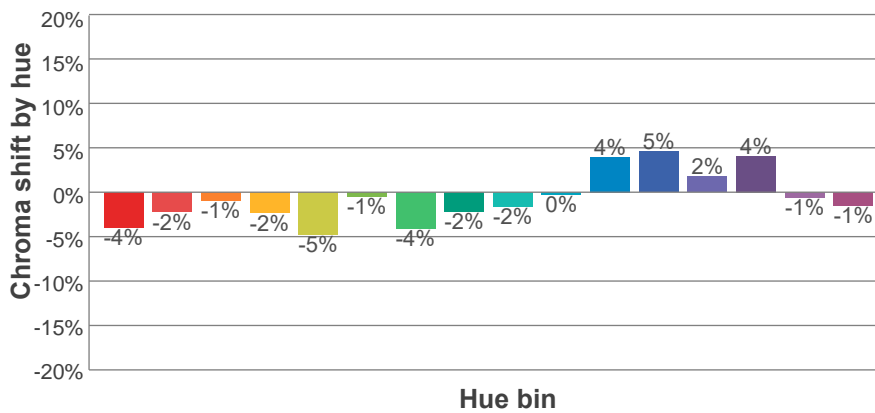
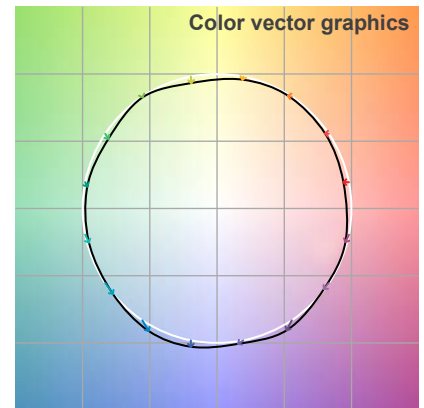
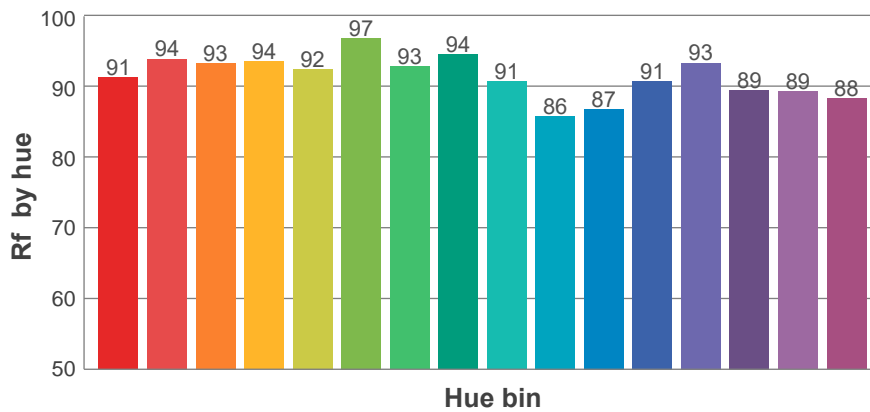
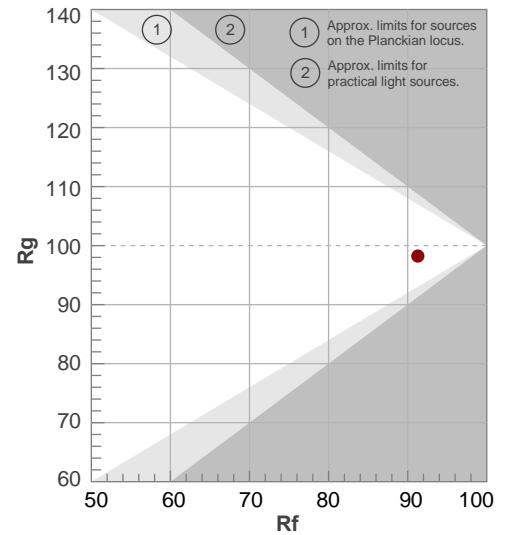
**Rf 91.3**

Fidelity index Rf

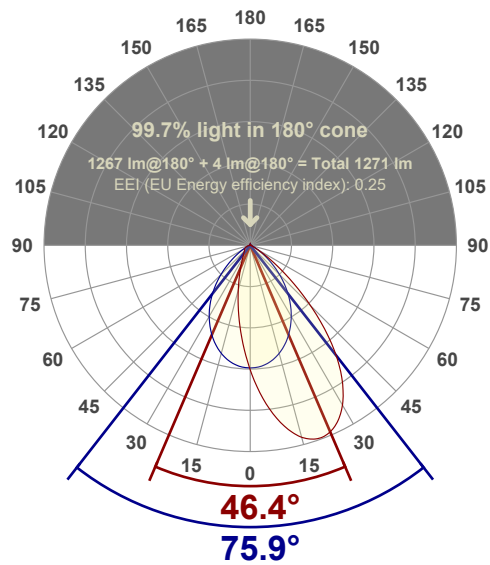
**Rg 98.2**

Gamut index Rg

Hue Bin	R <sub>f</sub>	Shifts (%)	
		Chroma	Hue
1	91	-4%	1%
2	94	-2%	2%
3	93	-1%	3%
4	94	-2%	0%
5	92	-5%	0%
6	97	-1%	0%
7	93	-4%	2%
8	94	-2%	3%
9	91	-2%	6%
10	86	0%	10%
11	87	4%	8%
12	91	5%	1%
13	93	2%	-4%
14	89	4%	-7%
15	89	-1%	-6%
16	88	-1%	-6%



## Angular Distribution Through 0° and 90° Planes



**Beam Angle: 75.9°W x 46.4°L**

## Beam Details

