

Photometric / Colorimetric / Electric Report

Fixture Model:

200-HD-IC-R-HI3500-40-EL1-2-500-FLR-2-BV

Trim Model:

FLR-2-BV-WH

Date:

8/10/2022



Light efficiency:

80 Lumen/Watt

Light quality:

CRI: 94.8

Color temperature:

3455 K

CIE 1931:

x: 0.407
y: 0.389

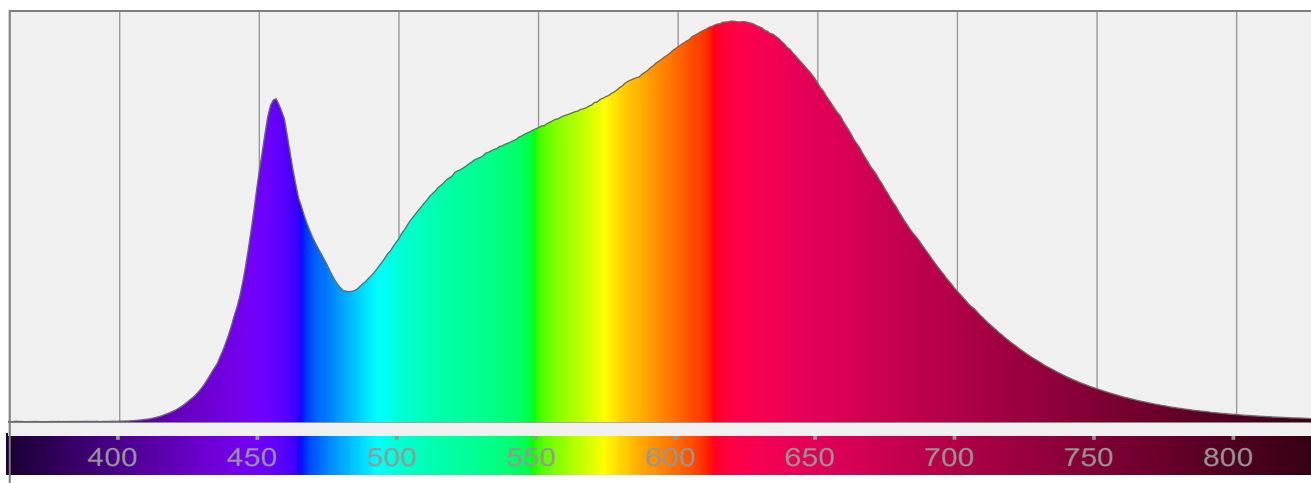
Output: 1564 lm

Peak: 3164 cd

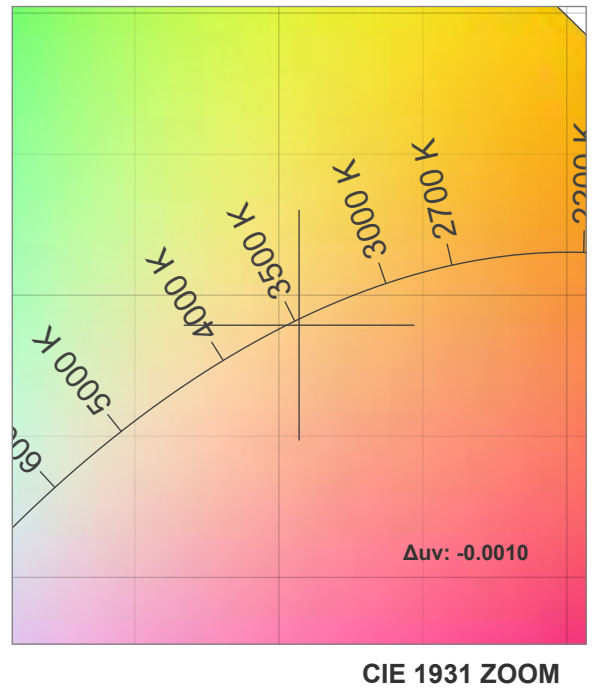
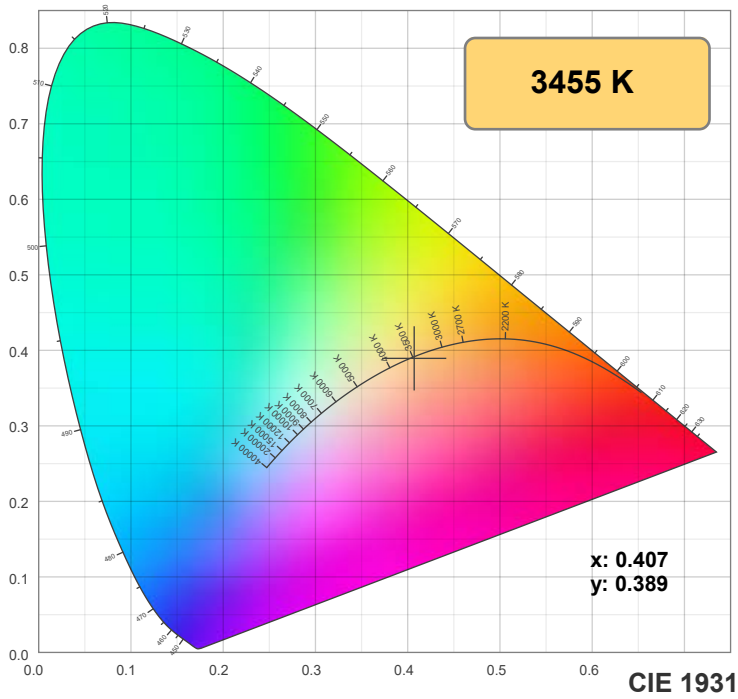
Power: 19.5 W

PF: 0.98

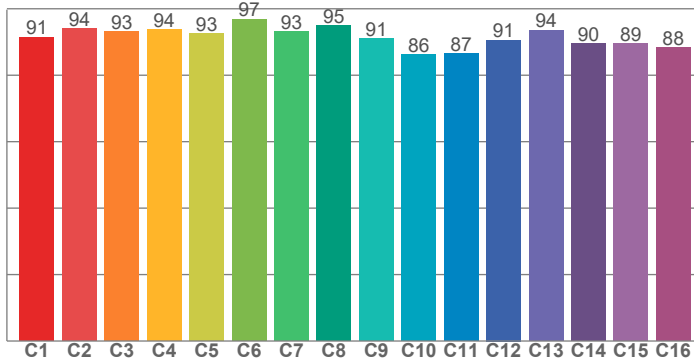
Spectra:



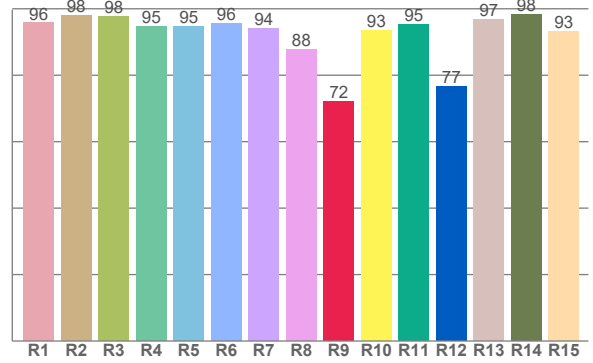
Color Details



TM-30: 91.4



CRI: 94.8 (R1-R8)



CRI R Values:

R1	R2	R3	R4	R5	R6	R7	R8	R9	R10	R11	R12	R13	R14	R15
95.7	97.9	97.8	94.6	94.6	95.6	94.1	87.8	72.0	93.4	95.2	76.6	96.7	98.2	93.1

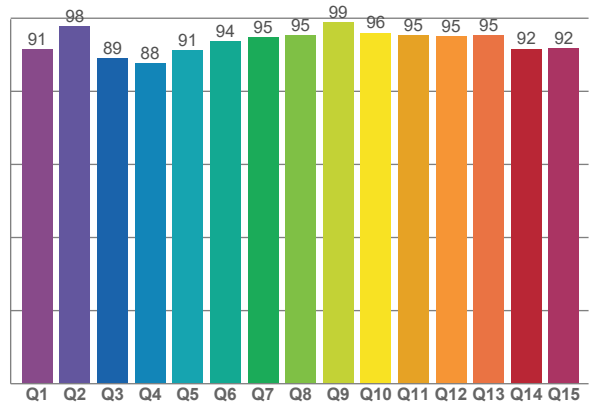
TM30 C Values:

C1	C2	C3	C4	C5	C6	C7	C8	C9	C10	C11	C12	C13	C14	C15	C16
91.5	94.0	93.1	93.6	92.5	96.9	93.2	94.9	91.1	86.1	86.6	90.6	93.6	89.5	89.5	88.4

CQS Q values:

Q1	Q2	Q3	Q4	Q5	Q6	Q7	Q8	Q9	Q10	Q11	Q12	Q13	Q14	Q15
91.5	97.7	89.1	87.6	91.2	93.8	94.7	95.3	98.9	96.0	95.2	95.2	95.3	91.6	91.8

CQS: 93.0



Color Parameters:

CCT	CRI	CRI R9	TM30 Rf	TM30 Rg	CQS	x	y	u	v	Δuv
3455 K	94.8	72.0	91.4	98.5	93.0	0.407	0.389	0.237	0.341	-0.0010

TM-30 Details

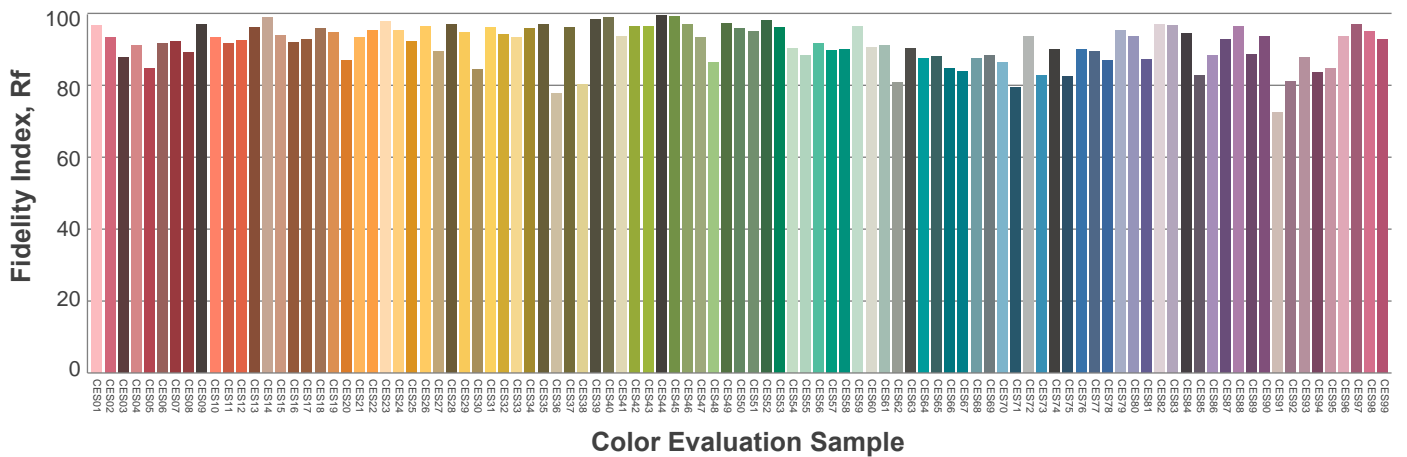
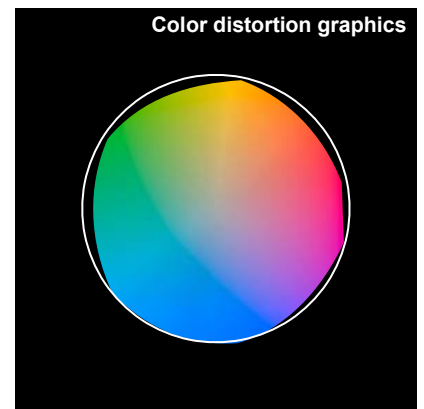
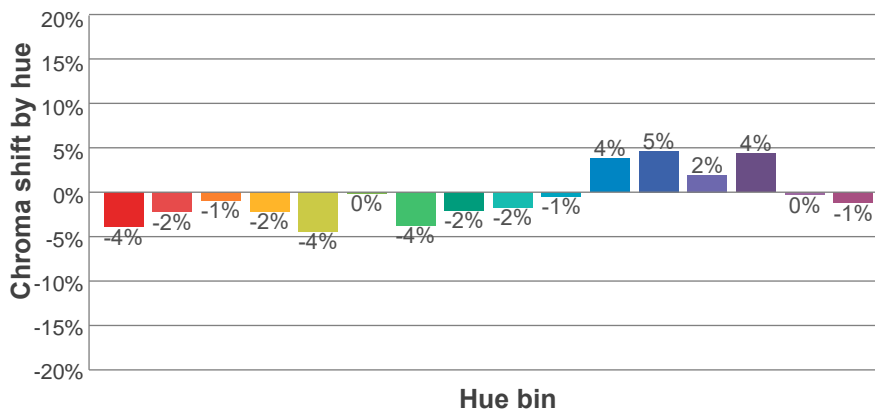
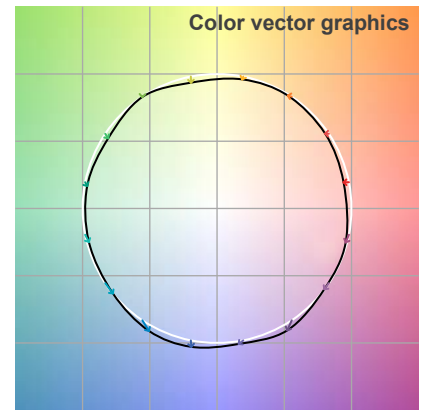
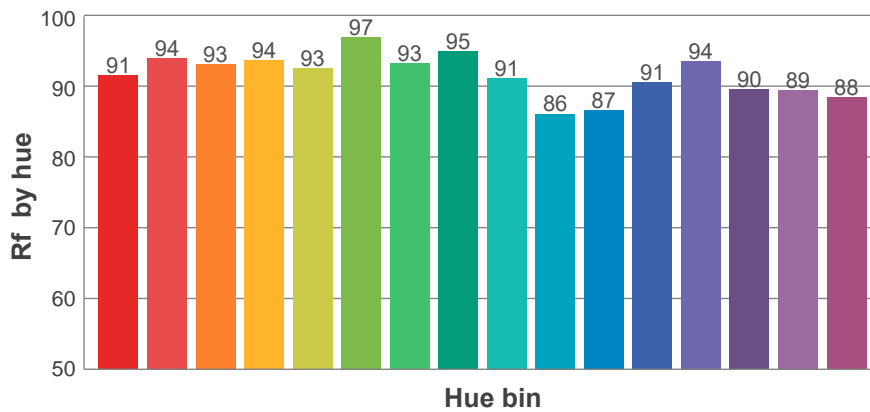
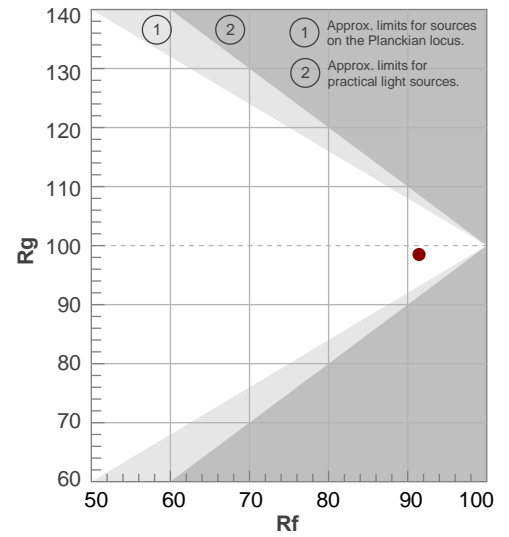
Rf 91.4

Fidelity index Rf

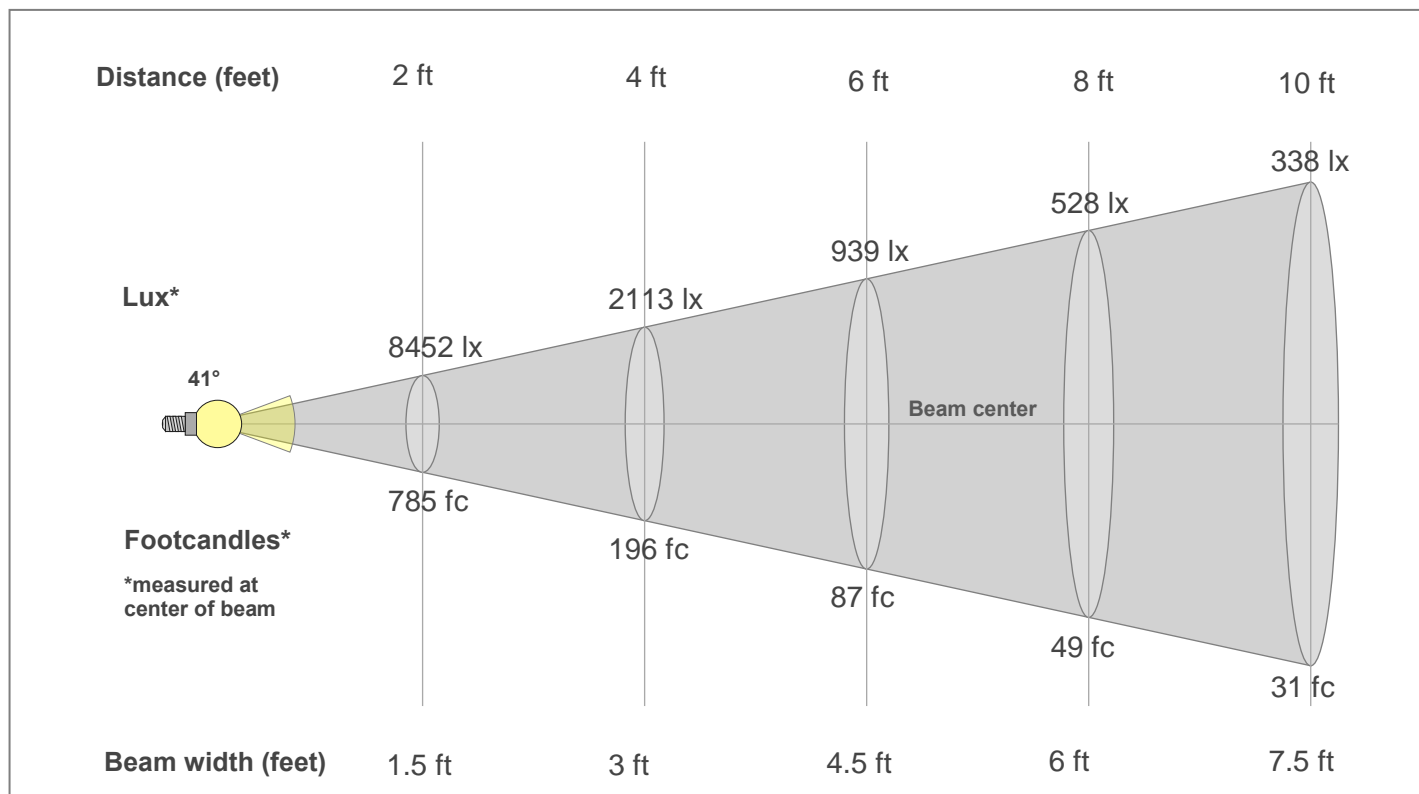
Rg 98.5

Gamut index Rg

Hue Bin	R _f	Shifts (%)	
		Chroma	Hue
1	91	-4%	1%
2	94	-2%	2%
3	93	-1%	3%
4	94	-2%	0%
5	93	-4%	1%
6	97	0%	0%
7	93	-4%	2%
8	95	-2%	2%
9	91	-2%	6%
10	86	-1%	10%
11	87	4%	8%
12	91	5%	1%
13	94	2%	-4%
14	90	4%	-7%
15	89	0%	-6%
16	88	-1%	-6%



Beam Details



Beam Intensities from 1-20m

1m	2m	3m	4m	5m	6m	7m	8m	9m	10m	11m	12m	13m	14m	15m	16m	17m	18m	19m	20m
3.3ft	6.6ft	9.8ft	13.1ft	16.4ft	19.7ft	23ft	26.2ft	29.5ft	32.8ft	36.1ft	39.4ft	42.7ft	45.9ft	49.2ft	52.5ft	55.8ft	59.1ft	62.3ft	65.6ft
3141lx	785lx	349lx	196lx	126lx	87lx	64lx	49lx	39lx	31lx	26lx	22lx	19lx	16lx	14lx	12lx	11lx	10lx	9lx	8lx
291.8fc	73fc	32.4fc	18.2fc	11.7fc	8.1fc	6fc	4.6fc	3.6fc	2.9fc	2.4fc	2fc	1.7fc	1.5fc	1.3fc	1.1fc	1fc	0.9fc	0.8fc	0.7fc

Intensities in 0° c-plane

0°	2°	4°	6°	8°	10°	12°	14°	16°	18°	20°	22°	24°	26°	28°	30°	32°	34°	36°	38°
3141	3151	3164	3156	3122	3034	2873	2647	2358	2026	1671	1329	1022	762	565	425	324	242	166	102
100%	100%	101%	100%	99%	97%	91%	84%	75%	64%	53%	42%	33%	24%	18%	14%	10%	8%	5%	3%

Intensities in 90° c-plane

0°	2°	4°	6°	8°	10°	12°	14°	16°	18°	20°	22°	24°	26°	28°	30°	32°	34°	36°	38°
3141	3151	3164	3156	3122	3034	2873	2647	2358	2026	1671	1329	1022	762	565	425	324	242	166	102
100%	100%	101%	100%	99%	97%	91%	84%	75%	64%	53%	42%	33%	24%	18%	14%	10%	8%	5%	3%

Intensities in 180° c-plane

0°	2°	4°	6°	8°	10°	12°	14°	16°	18°	20°	22°	24°	26°	28°	30°	32°	34°	36°	38°
3141	3151	3164	3156	3122	3034	2873	2647	2358	2026	1671	1329	1022	762	565	425	324	242	166	102
100%	100%	101%	100%	99%	97%	91%	84%	75%	64%	53%	42%	33%	24%	18%	14%	10%	8%	5%	3%

Intensities in 270° c-plane

0°	2°	4°	6°	8°	10°	12°	14°	16°	18°	20°	22°	24°	26°	28°	30°	32°	34°	36°	38°
3141	3151	3164	3156	3122	3034	2873	2647	2358	2026	1671	1329	1022	762	565	425	324	242	166	102
100%	100%	101%	100%	99%	97%	91%	84%	75%	64%	53%	42%	33%	24%	18%	14%	10%	8%	5%	3%

Beam angle 50%	Field angle 10%	Cut-off angle 2.5%	Intensity ratio in 120°	Intensity ratio in 90°
41°	64.3°	78.1°	99.0%	98.1%