

Photometric / Colorimetric / Electric Report

Fixture Model:

200-HD-IC-R-HI3500-60-EL1-2-500-FLR-2-30d

Trim Model:

FLR-2-WH

Date:

8/22/2022



Light efficiency:

30 Lumen/Watt

Light quality:

CRI: 94.9

Color temperature:

3482 K

CIE 1931:

x: 0.405
y: 0.387

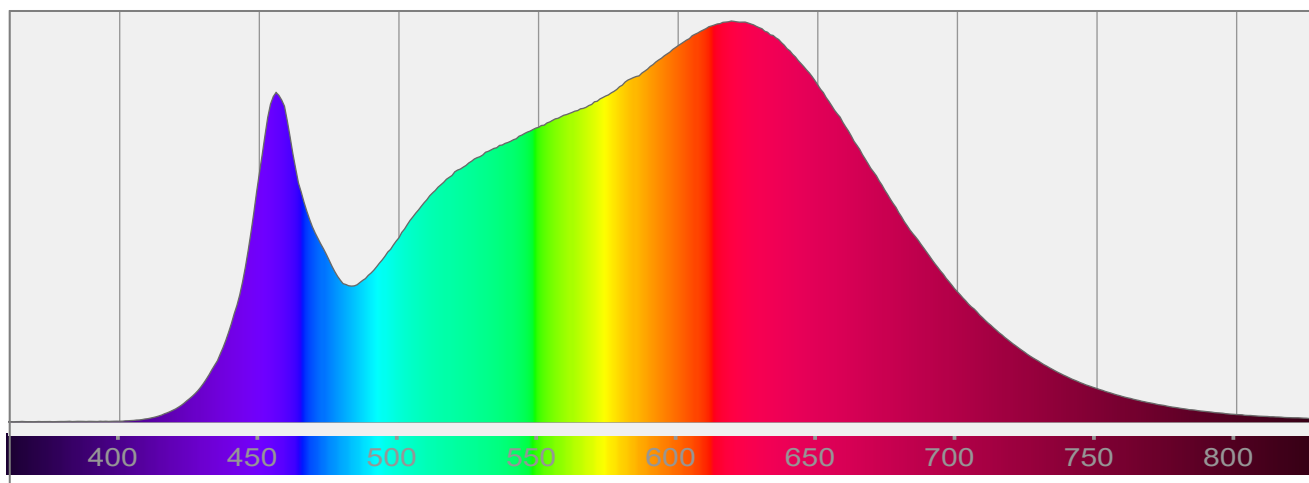
Output: 586 lm

Peak: 1683 cd

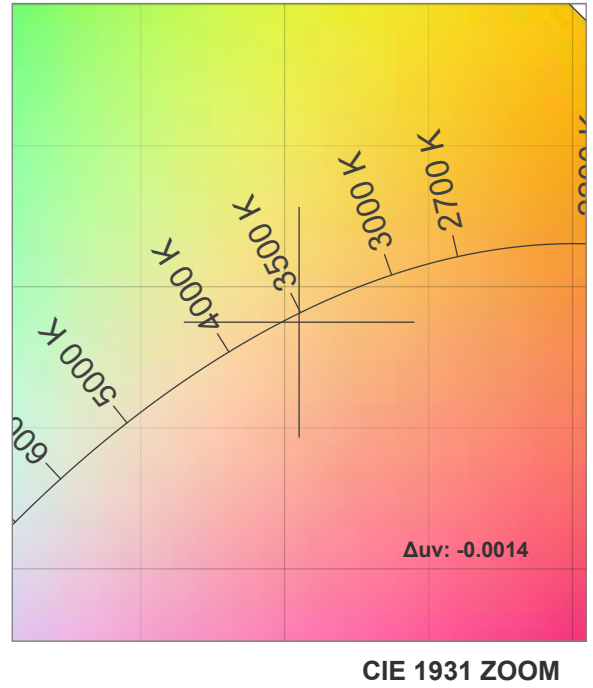
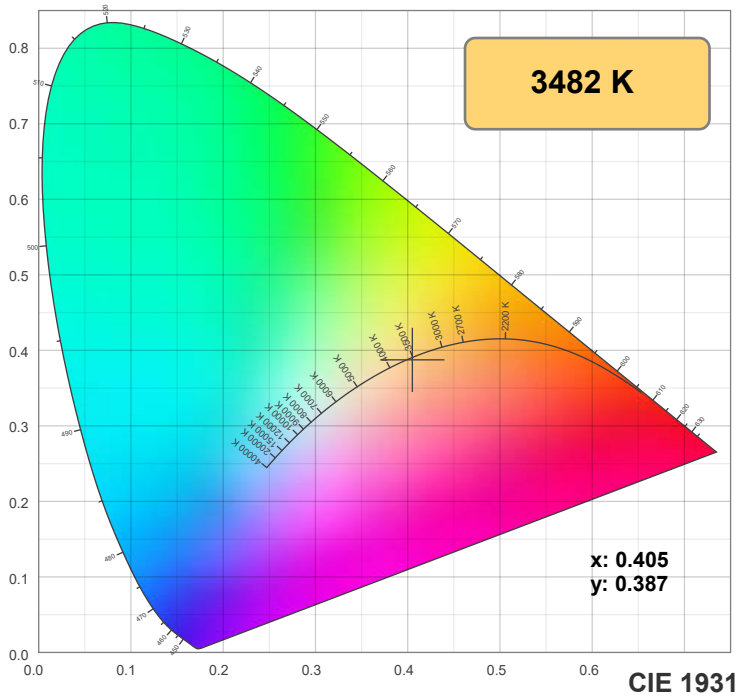
Power: 19.5 W

PF: 0.98

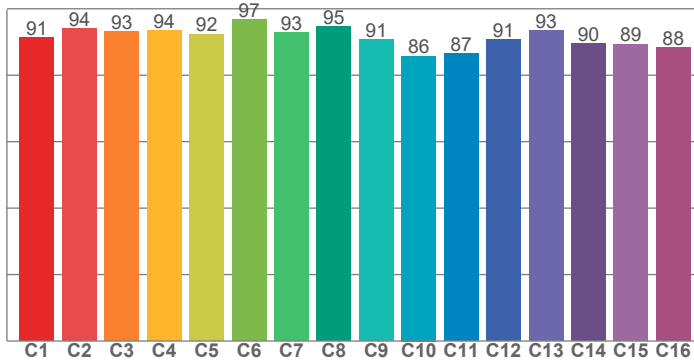
Spectra:



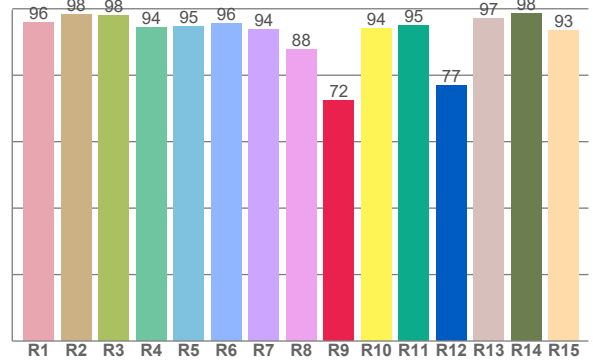
Color Details



TM-30: 91.3



CRI: 94.9 (R1-R8)



CRI R Values:

R1	R2	R3	R4	R5	R6	R7	R8	R9	R10	R11	R12	R13	R14	R15
95.9	98.3	98.1	94.5	94.8	95.7	93.8	87.8	72.4	94.2	95.1	76.9	97.1	98.5	93.4

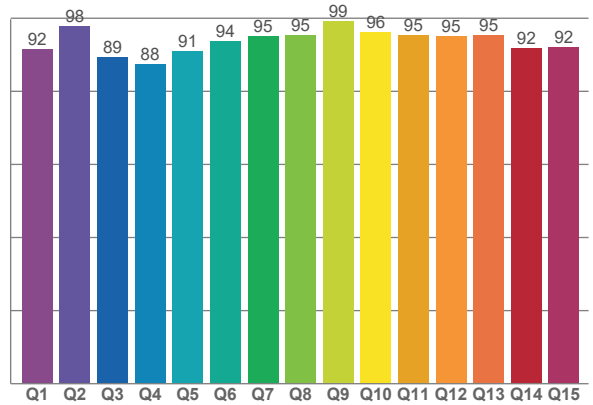
TM30 C Values:

C1	C2	C3	C4	C5	C6	C7	C8	C9	C10	C11	C12	C13	C14	C15	C16
91.4	93.9	93.2	93.5	92.4	96.8	92.9	94.6	90.7	85.8	86.6	90.7	93.4	89.5	89.4	88.3

CQS Q values:

Q1	Q2	Q3	Q4	Q5	Q6	Q7	Q8	Q9	Q10	Q11	Q12	Q13	Q14	Q15
91.5	97.8	89.3	87.5	91.0	93.7	95.0	95.4	99.1	96.3	95.3	95.1	95.3	91.8	91.9

CQS: 93.0



Color Parameters:

CCT	CRI	CRI R9	TM30 Rf	TM30 Rg	CQS	x	y	u	v	Δuv
3482 K	94.9	72.4	91.3	98.4	93.0	0.405	0.387	0.237	0.340	-0.0014

TM-30 Details

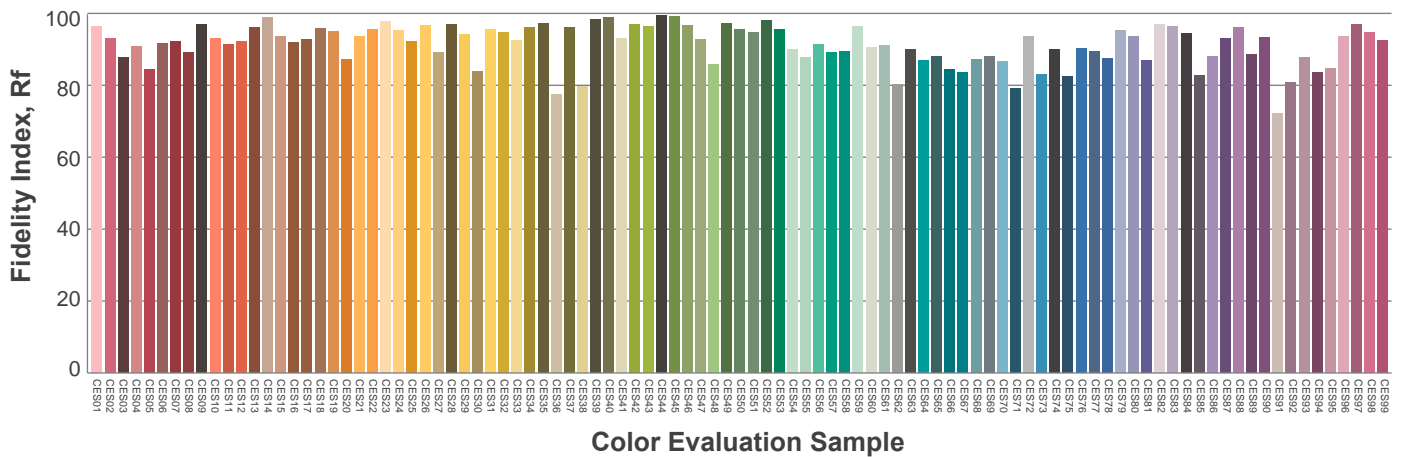
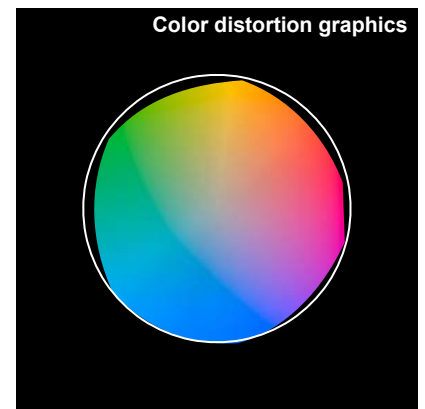
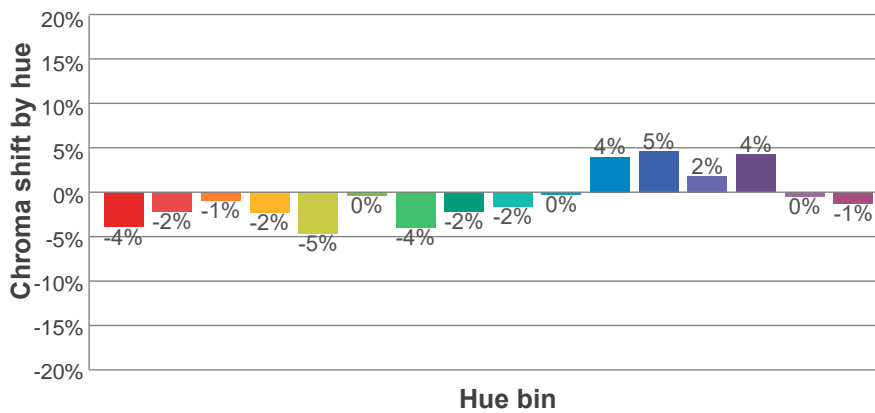
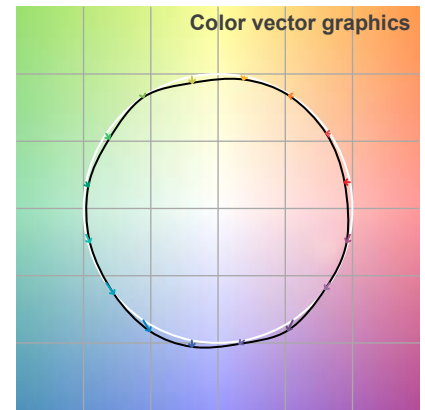
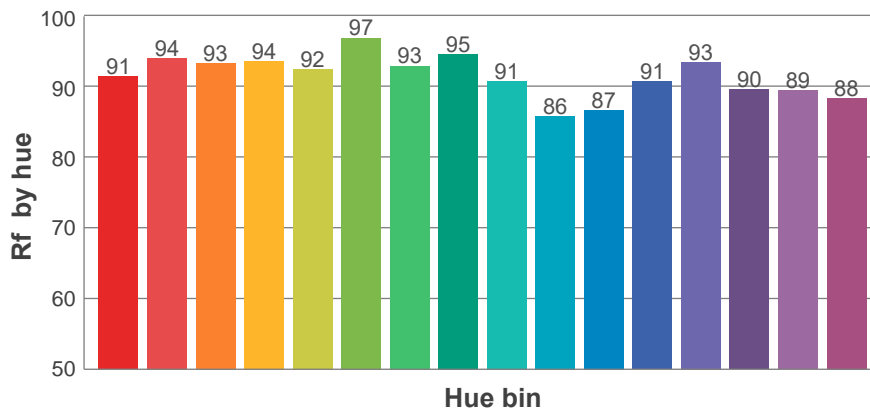
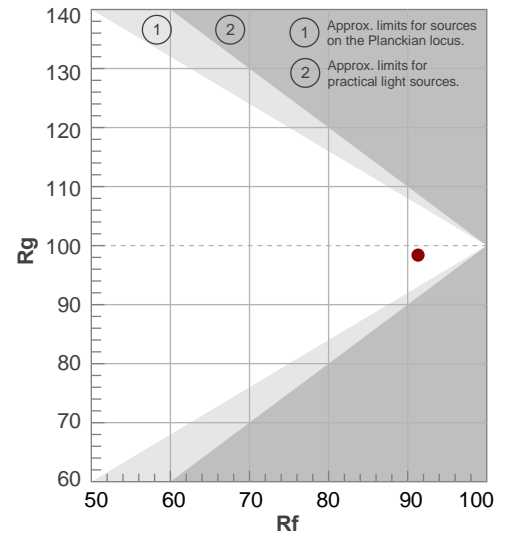
Rf 91.3

Fidelity index Rf

Rg 98.4

Gamut index Rg

Hue Bin	R _f	Shifts (%)	
		Chroma	Hue
1	91	-4%	1%
2	94	-2%	2%
3	93	-1%	3%
4	94	-2%	0%
5	92	-5%	1%
6	97	0%	0%
7	93	-4%	2%
8	95	-2%	3%
9	91	-2%	6%
10	86	0%	10%
11	87	4%	8%
12	91	5%	1%
13	93	2%	-4%
14	90	4%	-7%
15	89	0%	-6%
16	88	-1%	-6%



Aiming Angle

