

TRIM: **FS-W-M** - SEAMLESS SERIES™/SQUARE

1 3/4" APERTURE FOR WOOD/STONE CEILING APPLICATIONS

| | |
|---------------------------------|------|
| Project Name | |
| Date | Type |
| Prepared By | |
| Comments | |
| Catalog # FS - W - M - / | |



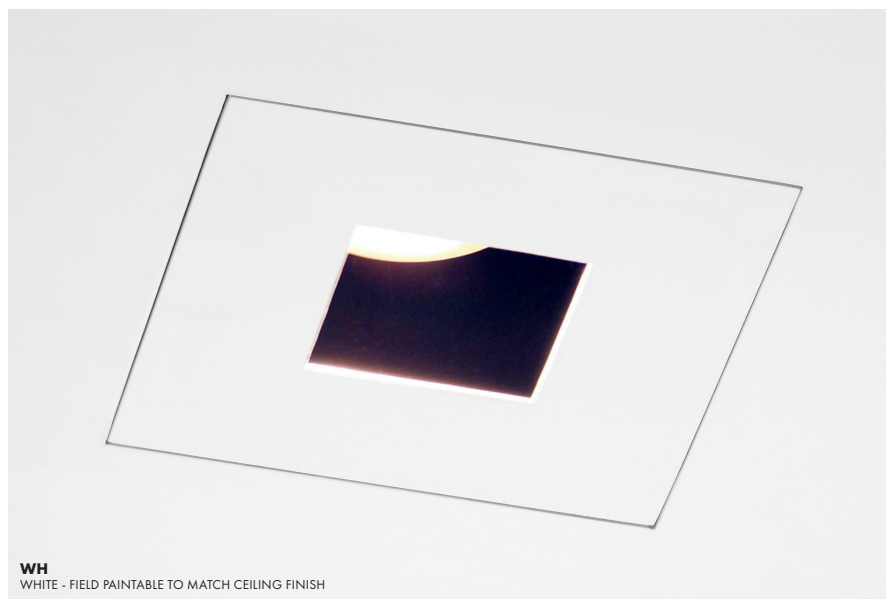
526 Portal Street
Cotati, CA 94931
USA
P 707.794.0888
www.8lighting.com

All No. 8 Lighting 800 Series trims are UL/CSA listed and CE Certified. No. 8 Lighting trims and lamp modules are protected by one or more U.S. Patents. No. 8 Lighting reserves the right to change details of design, materials, and finish.

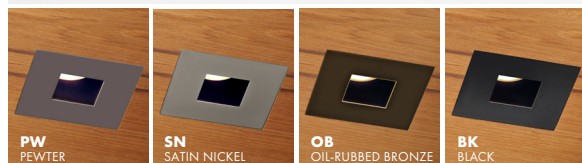
© 2025 No. 8 Lighting
Doc # 91322-13.2



PRODUCT FEATURES



WH
WHITE - FIELD PAINTABLE TO MATCH CEILING FINISH

**Trim Assembly**

- **FS-W-M** trim designed for flush installation into wood/stone ceilings.
- 4 5/16" trim plate with minimal 1 3/4" aperture installs flush with the finished ceiling.
- For use with **J2, J2S, J5, K2S, K5**, or **W5** lamp modules. Not for use with **M2** or **M2S** lamp modules.
- Field adjustable to accommodate ceiling thicknesses between 1/2" - 1 1/2".
- Die-cast from Zinc alloy for maximum strength, stability, and corrosion resistance.
- Unique magnetic trim plate is removable without marring finishes.
- Can be installed before or after ceiling installation.
- Available factory installed trim lens options are UL WET LISTED and IP54 Rated for use in DRY, DAMP, or WET locations (covered ceiling applications only). Approved for use in residential steam applications. Not for use in commercial steam applications.
- Available in many designer finishes including: **WH** - White (Field paintable to match ceiling), **PW** - Pewter, **SN** - Satin Nickel, **OB** - Oil-Rubbed Bronze, and **BK** - Black. Note: Lot variations in specialty finishes may occur. Ordering ALL trim kits at the same time is recommended.

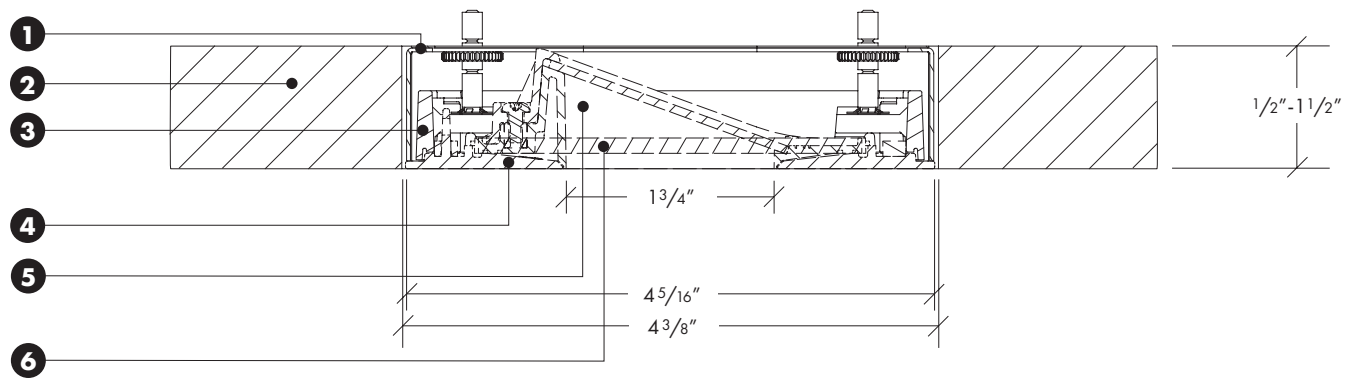
Warranty

All No. 8 Lighting products are covered by a 5 year limited warranty. Products installed in residential steam applications are covered by a 2 year limited warranty. For specific warranty details and limitations, see 8lighting.com/resources-downloads.

PRODUCT SPECIFIER/PRODUCT ORDER NUMBER

| | | | | | |
|---|---|---|---|--|---|
| FS | - | W-M | - | / | |
| TRIM ASSEMBLY | + | TRIM APPLICATION | + | TRIM FINISH | TRIM ACCESSORIES (OPTIONAL) |
| <p>FS 4 5/16" SQUARE flangeless trim 4 5/16" SQUARE trim plate w/ 1 3/4" aperture installs flush with finished ceiling</p> | | <p>W-M WOOD/STONE ceiling applications (1/2" min - 1 1/2" max)</p> | | <p>WH WHITE - Field paintable to match ceiling finish PW PEWTER* SN SATIN NICKEL* OB OIL-RUBBED BRONZE* BK BLACK *Specialty finish.</p> | <p>CL CLEAR accessory lens installed in trim plate* SF SOFT FOCUS accessory lens installed in trim plate* WW-8 WALL WASH accessory lens installed in trim plate* (for use with LED lamp modules J2, J2S, J5, + W5) *UL Wet listed and IP54 Rated</p> |

TRIM ASSEMBLY CROSS SECTION DETAIL



1) Housing

2) Wood/Stone Ceiling Material – Accommodates all thickness from $1/2''$ to $1 1/2''$.

3) Flush Trim Kit – $4 5/16''$ wide trim installs flush within $4 3/8''$ ceiling cut out. Height and rotation may be adjusted before or after ceiling installation. Features $\pm 3^\circ$ rotational adjustment for squaring trim to other fixtures or nearby walls.

4) Trim Plate – Features unique magnetic attachments. Mounts flush to finished ceiling.

5) WW-8 Wall Wash Accessory Lens (optional) – For use with **J2, J2S, J5, or W5** lamp modules. Factory installed into trim plate. UL WET LISTED and IP54 Rated for use in DRY, DAMP, or WET locations (covered ceiling applications only). Approved for use in residential steam applications. Not for use in commercial steam applications.

6) Clear/Soft Focus Accessory Lens (optional) – Factory installed into trim plate. UL WET LISTED and IP54 Rated for use in DRY, DAMP, or WET locations (covered ceiling applications only). Approved for use in residential steam applications. Not for use in commercial steam applications.

Note: Cross sections are for illustration purposes only. Refer to **800 Series** trim instructions **92005** for complete installation details.