

TRIM: **FLINS-BV-W** - BEVEL SERIES™ / FLANGED SQUARE

1 3/4" APERTURE FOR WOOD/STONE/ACOUSTIC TILE/SHEETROCK CEILING APPLICATIONS

Project Name	
Date	Type
Prepared By	
Comments	
Catalog # FLINS - BV - W - /	



No. 8
eight
LIGHTING

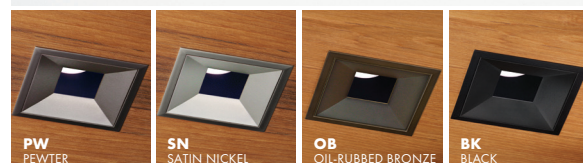
526 Portal Street
Cotati, CA 94931
USA
P 707.794.0888
www.8lighting.com

All No. 8 Lighting 800 Series trims are UL/CSA listed and CE Certified. No. 8 Lighting trims and lamp modules are protected by one or more U.S. Patents. No. 8 Lighting reserves the right to change details of design, materials, and finish.

© 2025 No. 8 Lighting
Doc # 91321-13.2




PRODUCT FEATURES



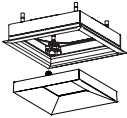
Trim Assembly

- **FLINS-BV-W** flanged trim bevels from finished ceiling to 1/2" above ceiling surface. Designed for wood, stone, acoustic tile, or sheetrock ceilings.
- 4" trim plate with minimal 1 3/4" aperture.
- Optimized for use with type **J2, J2S, J5, K2S, or K5** lamp modules. Not for use with **M2, M2S, or W5** lamp modules.
- Field adjustable to accommodate ceiling thicknesses between 1/2" - 1 1/2".
- Die-cast from Zinc alloy for maximum strength, stability, and corrosion resistance.
- Unique magnetic trim plate is removable without marring finishes.
- Available factory installed trim lens options are UL WET LISTED and IP54 Rated for use in DRY, DAMP, or WET locations (covered ceiling applications only). Approved for use in residential steam applications. Not for use in commercial steam applications.
- Available in many designer finishes including: **WH** - White (Field paintable to match ceiling), **PW** - Pewter, **SN** - Satin Nickel, **OB** - Oil-Rubbed Bronze, and **BK** - Black. Note: Lot variations in specialty finishes may occur. Ordering ALL trim kits at the same time is recommended.

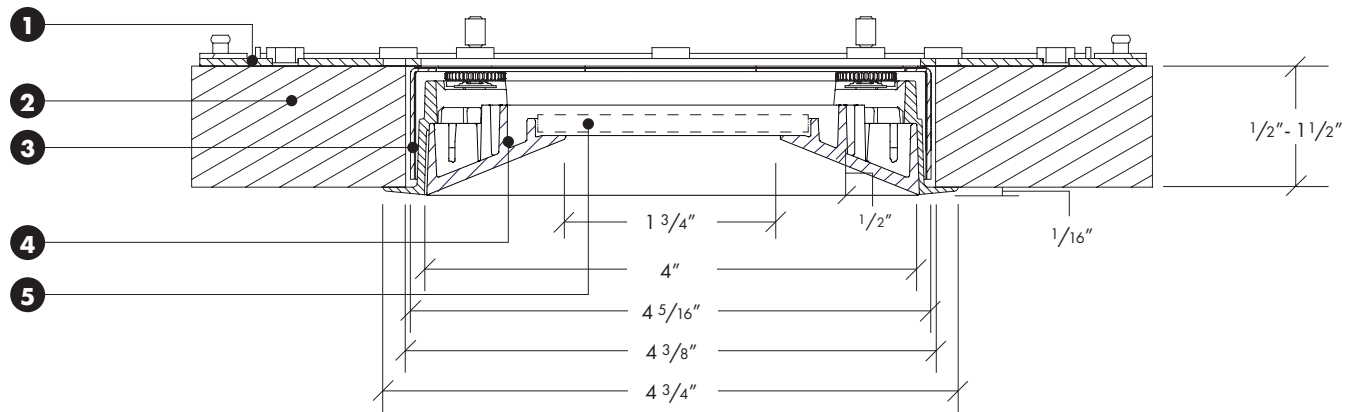
Warranty

All No. 8 Lighting products are covered by a 5 year limited warranty. Products installed in residential steam applications are covered by a 2 year limited warranty. For specific warranty details and limitations, see 8lighting.com/resources-downloads.

PRODUCT SPECIFIER/PRODUCT ORDER NUMBER

FLINS-BV	-	W	-		/	
TRIM ASSEMBLY	+	TRIM APPLICATION	+	TRIM FINISH	/	TRIM ACCESSORIES (OPTIONAL)
 <p>FLINS-BV 4 3/4" SQUARE flanged INSET trim 4" SQUARE trim plate w/ 1 3/4" aperture BEVELS from finished ceiling to 1/2" above</p>		<p>W WOOD/STONE/ACOUSTIC TILE/SHEETROCK ceiling applications (1/2" min - 1 1/2" max)</p>		<p>WH WHITE - Field paintable to match ceiling finish</p> <p>PW PEWTER*</p> <p>SN SATIN NICKEL*</p> <p>OB OIL-RUBBED BRONZE*</p> <p>BK BLACK</p> <p>*Specialty finish.</p>		<p>CL CLEAR accessory lens installed in trim plate*</p> <p>SF SOFT FOCUS accessory lens installed in trim plate*</p> <p>*UL Wet listed and IP54 Rated.</p>

TRIM ASSEMBLY CROSS SECTION DETAIL



1) Housing

2) Wood/Stone/Acoustic Tile/Sheetrock Ceiling Material – Accommodates all thickness from $1\frac{1}{2}"$ to $1\frac{1}{2}"$.

3) Flanged Inset Trim Kit – $4\frac{3}{4}"$ wide flanged trim overlaps $4\frac{3}{8}"$ ceiling cut out. Height and rotation can be adjusted before or after ceiling installation. Features field adjustable $\pm 3^\circ$ rotation for squaring trim to other fixtures or nearby walls.

4) Trim Plate – Features unique magnetic attachments. Bevels from finished ceiling to $1\frac{1}{2}"$ above.

5) Clear/Soft Focus Accessory Lens (optional) – Factory installed into trim plate. UL WET LISTED and IP54 Rated for use in DRY, DAMP, or WET locations (covered ceiling applications only). Approved for use in residential steam applications. Not for use in commercial steam applications.

Note: Cross sections are for illustration purposes only. Refer to **800 Series** trim instructions **92005** for complete installation details.