

TRIM: **FLS-LG-W** - SEAMLESS SERIES™ / FLANGED SQUARE
2 3/4" APERTURE FOR WOOD/STONE/ACOUSTIC TILE/SHEETROCK CEILING APPLICATIONS

Project Name	
Date	Type
Prepared By	
Comments	
Catalog # FLS - LG - W - /	



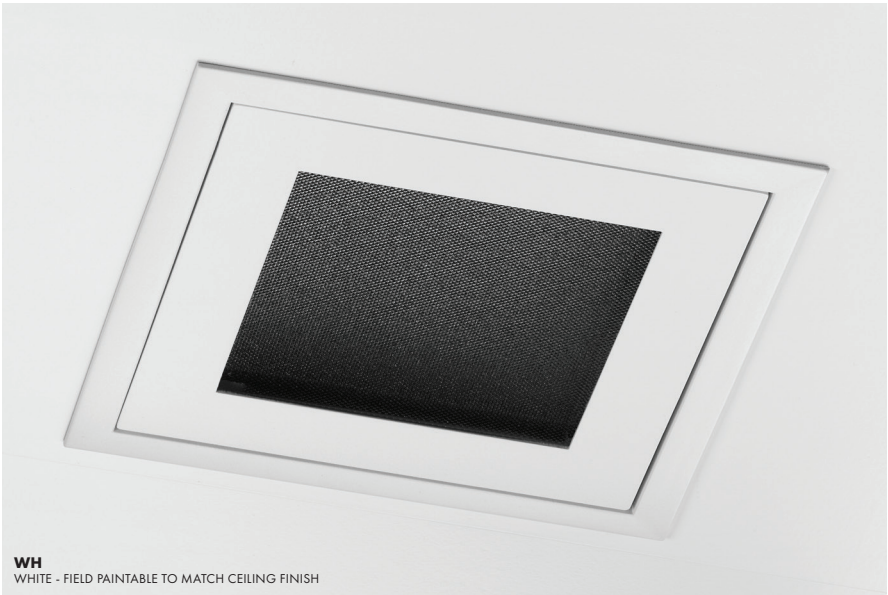
526 Portal Street
Cotati, CA 94931
USA
P 707.794.0888
www.8lighting.com

All No. 8 Lighting 800 Series trims are UL/CSA listed and CE Certified. No. 8 Lighting trims and lamp modules are protected by one or more U.S. Patents. No. 8 Lighting reserves the right to change details of design, materials, and finish.

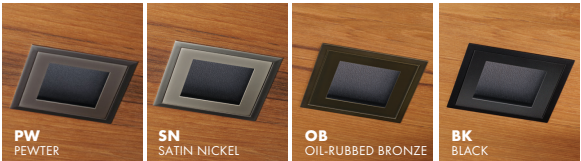
© 2025 No. 8 Lighting
Doc # 91316-13.2



PRODUCT FEATURES



WH
WHITE - FIELD PAINTABLE TO MATCH CEILING FINISH



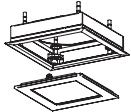
Trim Assembly

- **FLS-LG-W** flanged trim designed for wood, stone, acoustic tile, or sheetrock ceilings.
- 4" trim plate with minimal 2 3/4" aperture installs flush with the trim flange. Includes Solite soft focus lens standard. Also available without lens.
- Optimized for use with type **J2, J2S, J5, K2S, or K5** lamp modules. Not for use with **M2, M2S, or W5** lamp modules.
- Field adjustable to accommodate ceiling thicknesses between 1/2" - 1 1/2".
- Die-cast from Zinc alloy for maximum strength, stability, and corrosion resistance.
- Unique magnetic trim plate is removable without marring finishes.
- Available factory installed trim lens options are UL WET LISTED and IP54 Rated for use in DRY, DAMP, or WET locations (covered ceiling applications only). Approved for use in residential steam applications. Not for use in commercial steam applications.
- Available in many designer finishes including: **WH** - White (Field paintable to match ceiling), **PW** - Pewter, **SN** - Satin Nickel, **OB** - Oil-Rubbed Bronze, and **BK** - Black. Note: Lot variations in specialty finishes may occur. Ordering ALL trim kits at the same time is recommended.

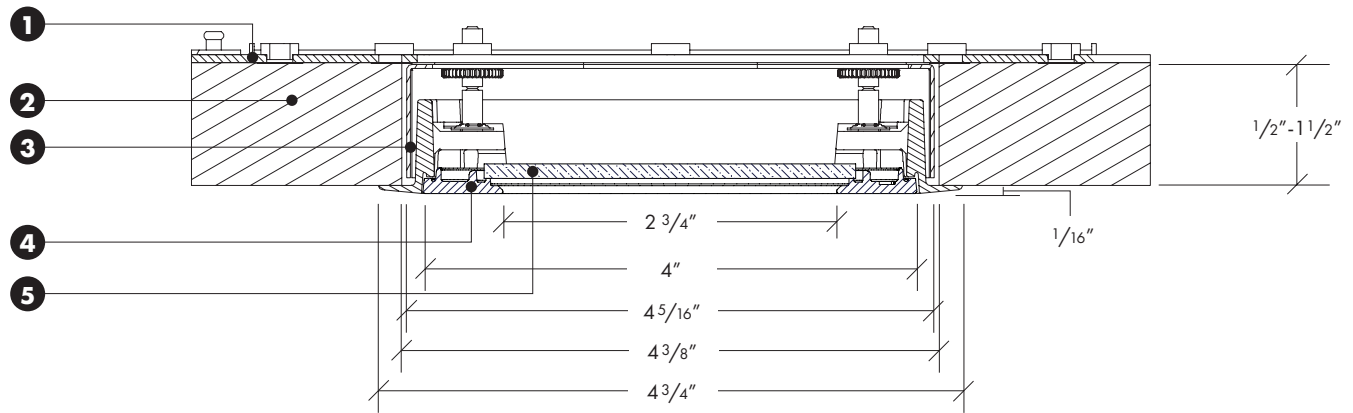
Warranty

All No. 8 Lighting products are covered by a 5 year limited warranty. Products installed in residential steam applications are covered by a 2 year limited warranty. For specific warranty details and limitations, see 8lighting.com/resources-downloads.

PRODUCT SPECIFIER/PRODUCT ORDER NUMBER

FLS-LG	-	W	-	/	
TRIM ASSEMBLY	+	TRIM APPLICATION	+	TRIM FINISH	TRIM ACCESSORIES
 FLS-LG 4 3/4" SQUARE flanged trim 4" SQUARE trim plate w/ 2 3/4" aperture installs flush with trim Solite soft focus accessory lens installed standard.		W WOOD/STONE/ ACOUSTIC TILE/SHEET- ROCK ceiling applications (1/2" min - 1 1/2" max)		WH WHITE - Field paintable to match ceiling finish PW PEWTER* SN SATIN NICKEL* OB OIL-RUBBED BRONZE* BK BLACK * Specialty finish.	SF SOFT FOCUS accessory lens installed in trim plate (standard)* NL NO accessory lens installed in trim plate (optional) CL CLEAR accessory lens installed in trim plate (optional)* *UL Wet listed and IP54 Rated.

TRIM ASSEMBLY CROSS SECTION DETAIL



1) Housing

2) Wood/Stone/Acoustic Tile/Sheetrock Ceiling Material – Accommodates all thickness from $1/2''$ to $1 1/2''$.

3) Flanged Flush Trim Kit – $4 3/4''$ wide flanged trim overlaps $4 3/8''$ ceiling cut out. Height and rotation can be adjusted before or after ceiling installation. Features $\pm 3^\circ$ rotational adjustment for squaring trim to other fixtures or nearby walls.

4) Trim Plate – Features unique magnetic attachments.

5) Soft Focus Accessory Lens (standard) / **Clear Accessory Lens** (optional) – Factory installed into trim plate. UL WET LISTED and IP54 Rated for use in DRY, DAMP, or WET locations (covered ceiling applications only). Approved for use in residential steam applications. Not for use in commercial steam applications.

Note: Cross sections are for illustration purposes only. Refer to **800 Series** trim instructions **92005** for complete installation details.