

## Photometric / Colorimetric / Electric Report

Fixture Model:

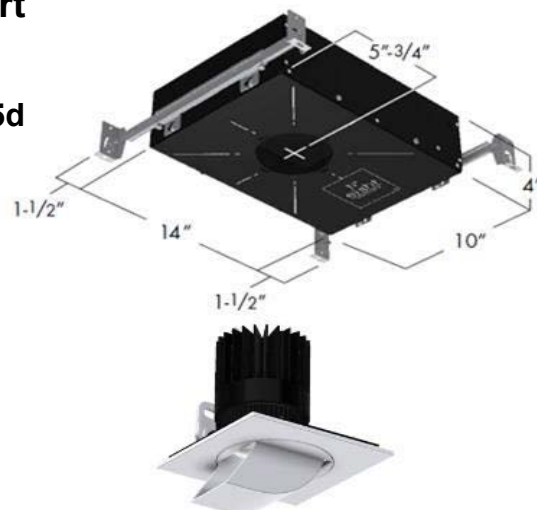
804S-M2S-WD-15-DIM1-8-1000-WD-FS-P-1-WH-45d

Trim Model:

FS-P-1-WH

Date:

4/15/2022



Light efficiency:

39 Lumen/Watt

Light quality:

CRI: 96.5

Color temperature:

3102 K

CIE 1931:

x: 0.429  
y: 0.399

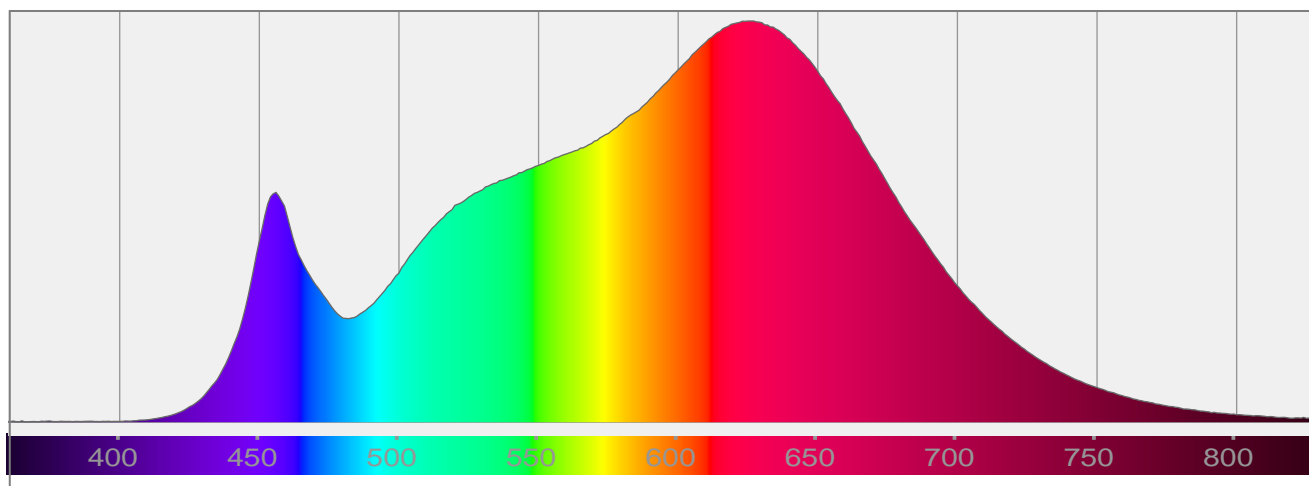
Output: 569 lm

Peak: 2906 cd

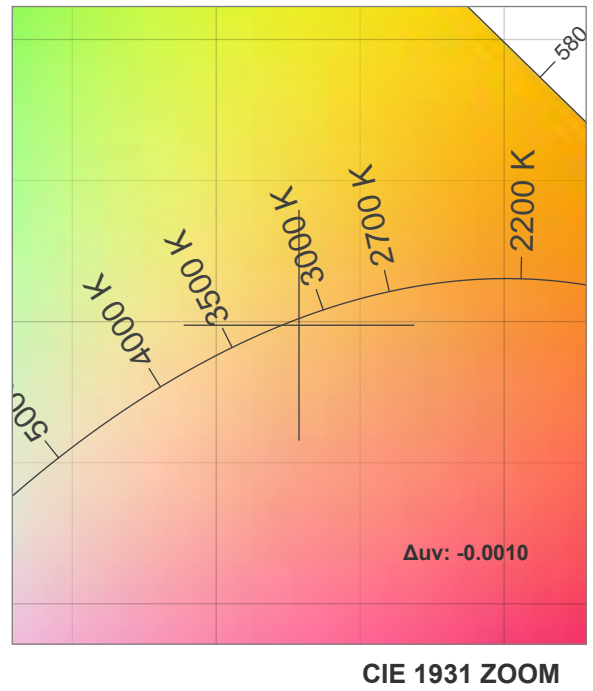
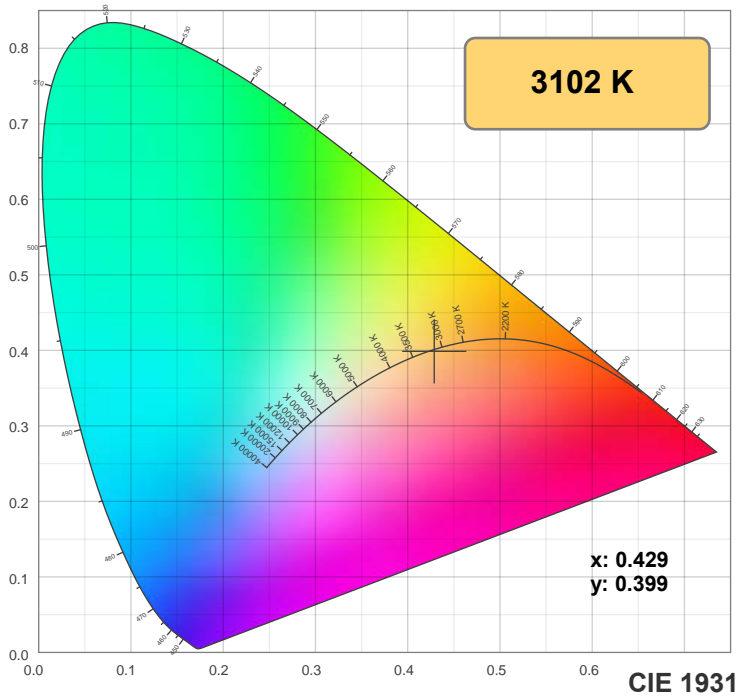
Power: 14.5 W

PF: 0.99

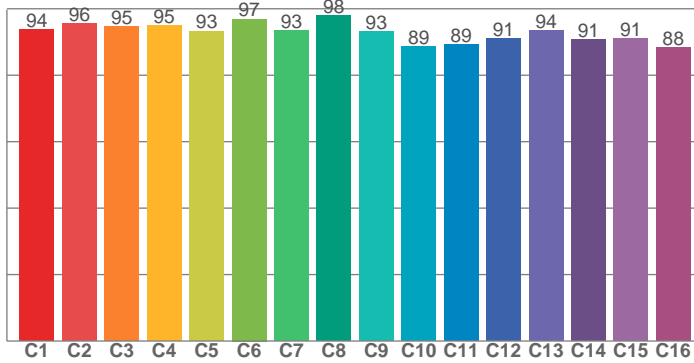
Spectra:



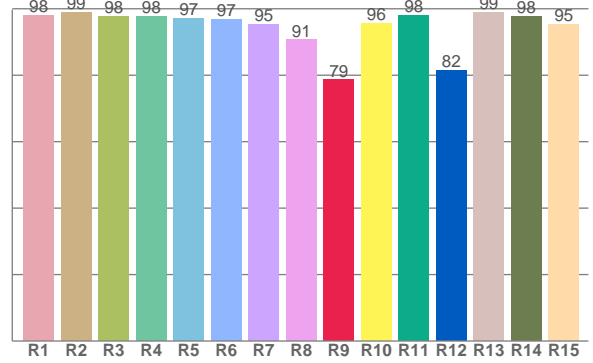
## Color Details



**TM-30: 93.0**



**CRI: 96.5 (R1-R8)**



**CRI R Values:**

R1	R2	R3	R4	R5	R6	R7	R8	R9	R10	R11	R12	R13	R14	R15
98.1	98.9	97.6	97.7	97.2	96.9	95.3	90.6	78.6	95.7	97.9	81.5	98.8	97.7	95.3

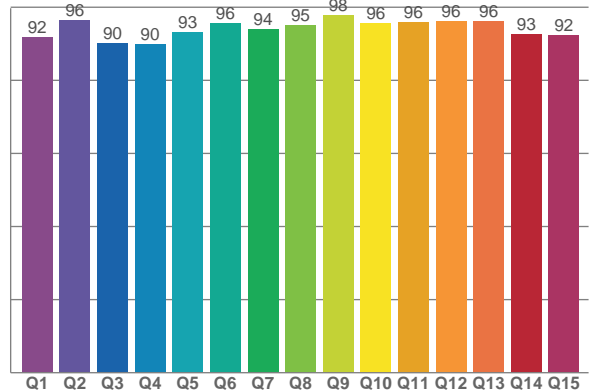
**TM30 C Values:**

C1	C2	C3	C4	C5	C6	C7	C8	C9	C10	C11	C12	C13	C14	C15	C16
93.7	95.6	94.7	94.9	93.3	96.9	93.3	98.1	93.2	88.7	89.3	91.1	93.6	90.6	91.1	88.4

**CQS Q values:**

Q1	Q2	Q3	Q4	Q5	Q6	Q7	Q8	Q9	Q10	Q11	Q12	Q13	Q14	Q15
91.8	96.4	90.2	89.9	93.2	95.7	93.9	95.1	97.7	95.7	95.9	96.0	96.1	92.6	92.4

**CQS: 93.6**



**Color Parameters:**

CCT	CRI	CRI R9	TM30 Rf	TM30 Rg	CQS	x	y	u	v	Δuv
3102 K	96.5	78.6	93.0	99.9	93.6	0.429	0.399	0.248	0.345	-0.0010

# TM-30 Details

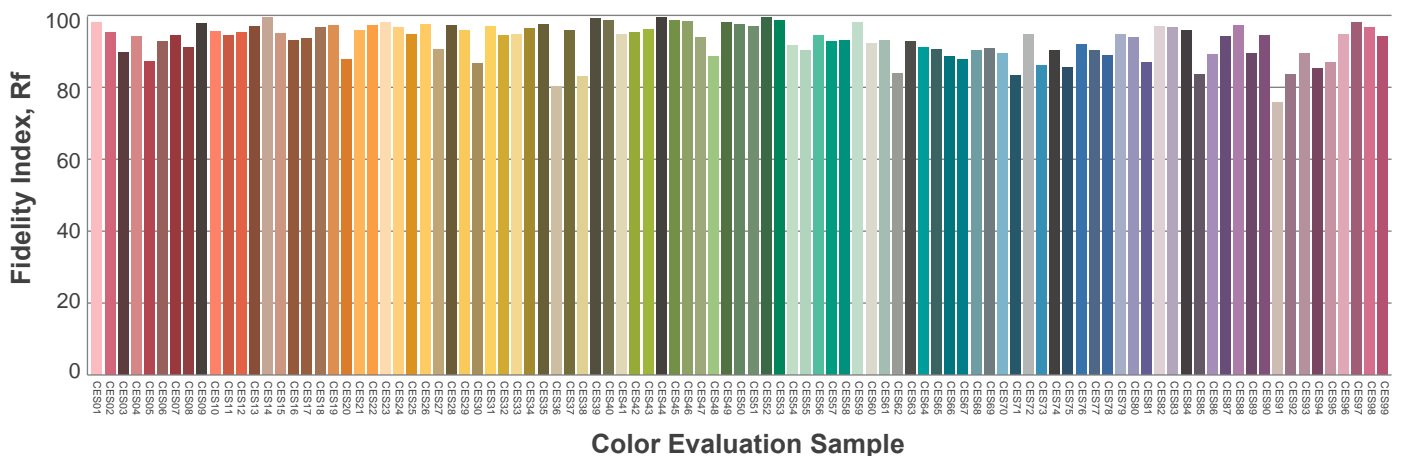
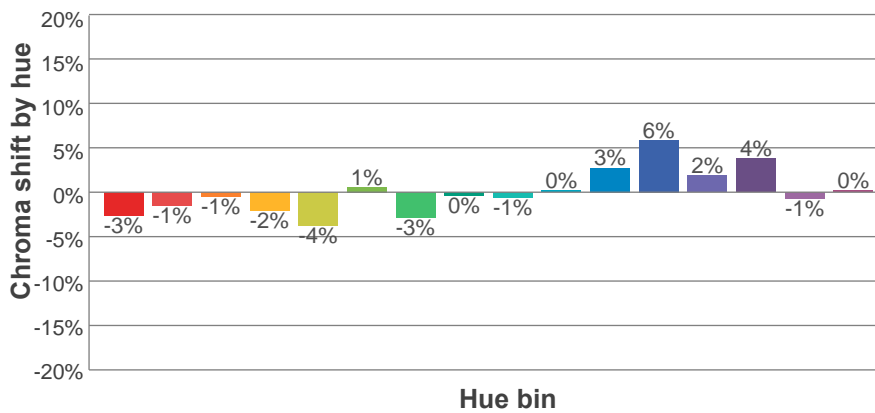
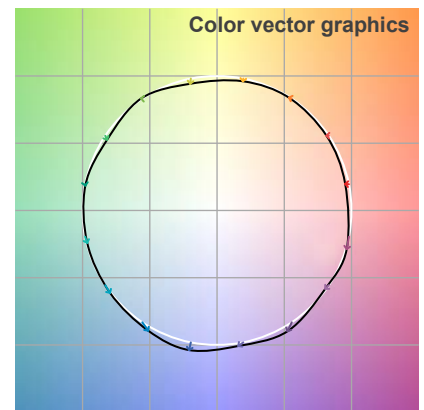
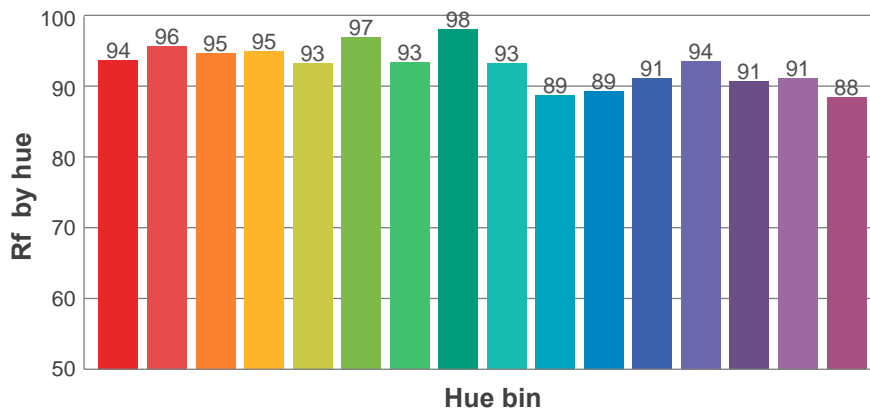
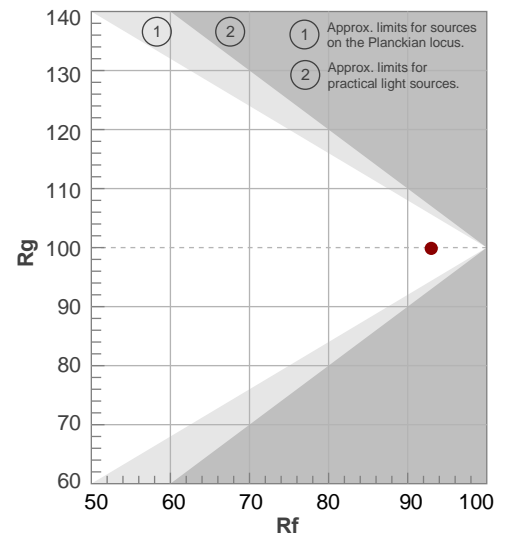
**Rf 93.0**

Fidelity index Rf

**Rg 99.9**

Gamut index Rg

Hue Bin	R <sub>f</sub>	Shifts (%)	
		Chroma	Hue
1	94	-3%	1%
2	96	-1%	1%
3	95	-1%	2%
4	95	-2%	0%
5	93	-4%	1%
6	97	1%	1%
7	93	-3%	2%
8	98	0%	1%
9	93	-1%	5%
10	89	0%	7%
11	89	3%	7%
12	91	6%	0%
13	94	2%	-4%
14	91	4%	-6%
15	91	-1%	-4%
16	88	0%	-9%



## Aiming Angle

