

Photometric / Colorimetric / Electric Report

Fixture Model:

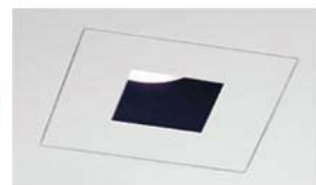
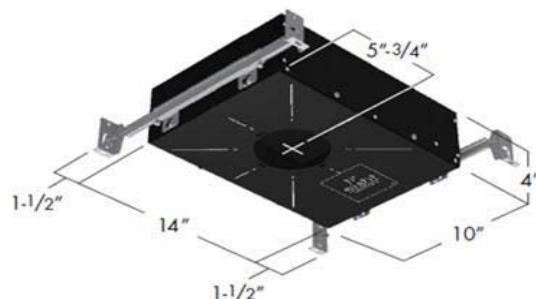
804S-J2S-WD-40-DIM1-8-1000-WD-FS-P-1-WH

Trim Model:

FS-P-1-WH

Date:

4/8/2022



Light efficiency:

48 Lumen/Watt

Light quality:

CRI: 96.9

Color temperature:

3098 K

CIE 1931:

x: 0.428
y: 0.396

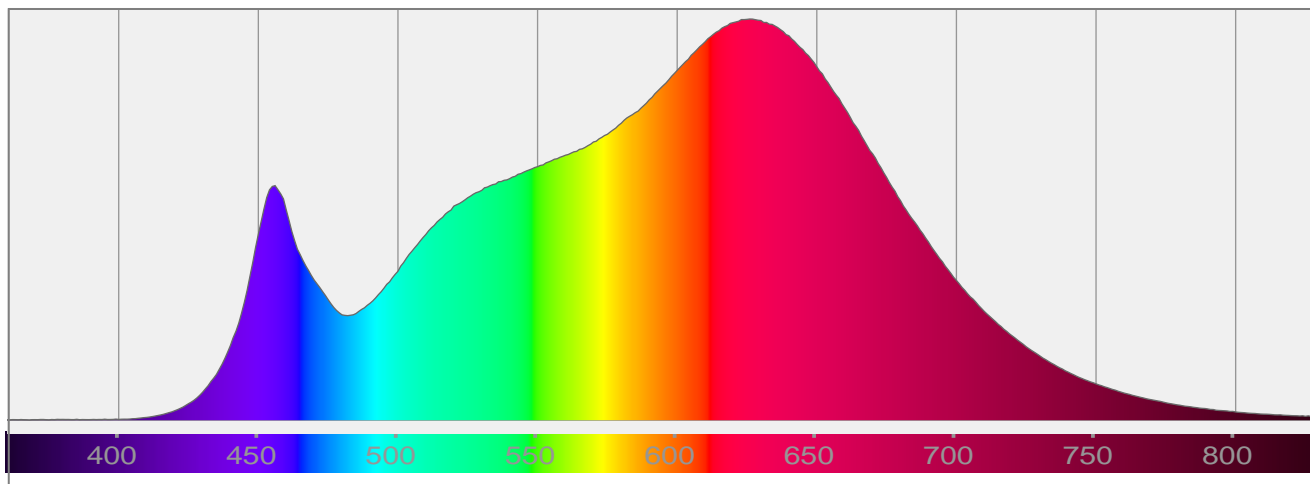
Output: 700 lm

Peak: 1605 cd

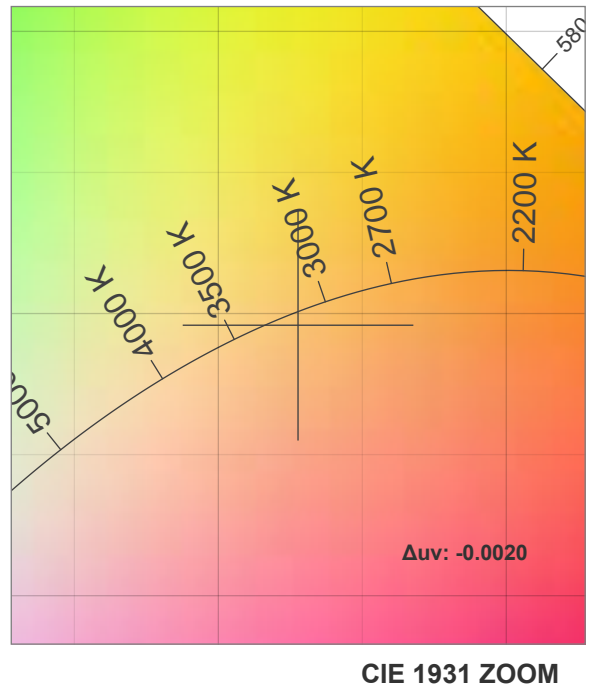
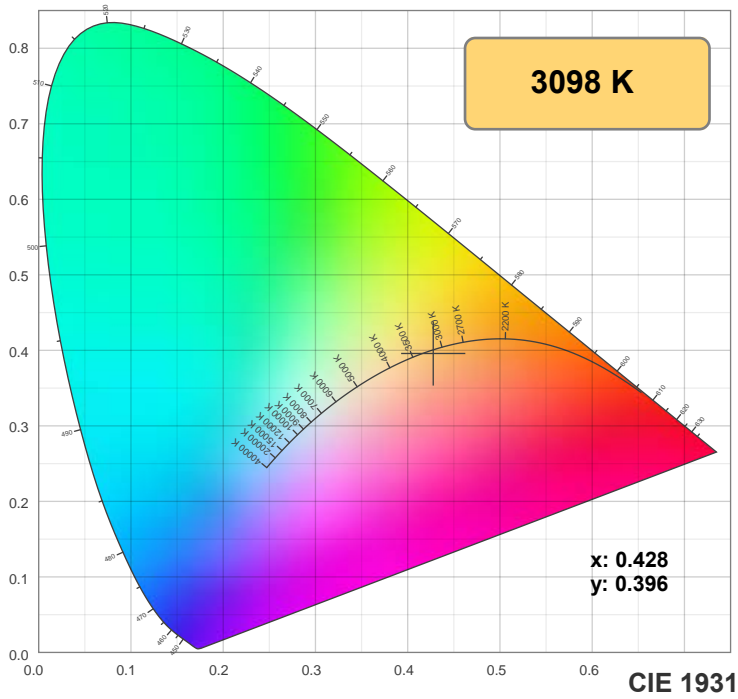
Power: 14.5 W

PF: 1.0

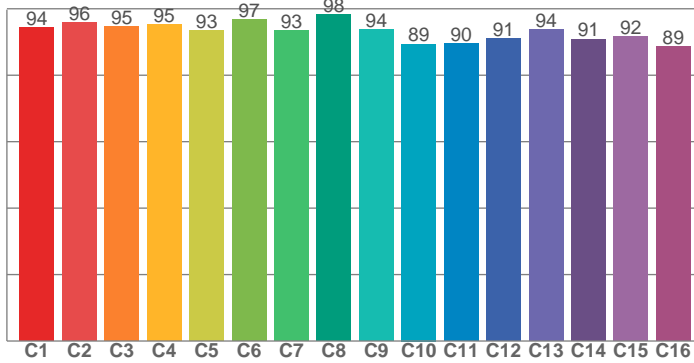
Spectra:



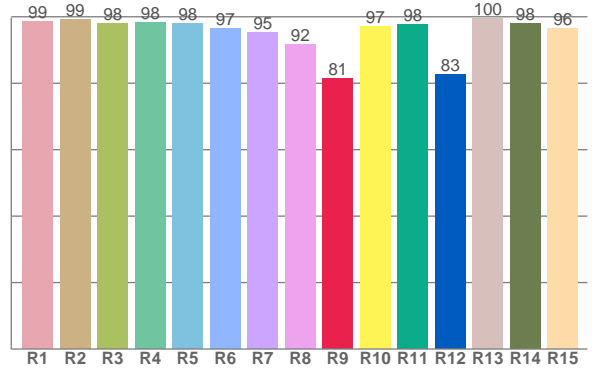
Color Details



TM-30: 93.3



CRI: 96.9 (R1-R8)



CRI R Values:

R1	R2	R3	R4	R5	R6	R7	R8	R9	R10	R11	R12	R13	R14	R15
98.7	99.3	97.9	98.2	98.0	96.6	95.3	91.6	81.4	97.1	97.6	82.6	99.5	97.9	96.5

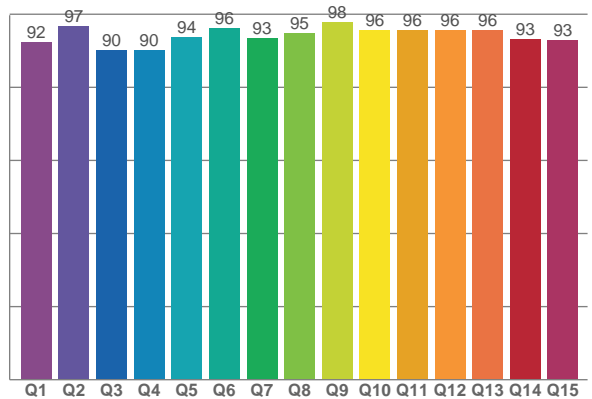
TM30 C Values:

C1	C2	C3	C4	C5	C6	C7	C8	C9	C10	C11	C12	C13	C14	C15	C16
94.2	95.9	94.7	95.3	93.4	96.7	93.5	98.3	93.7	89.4	89.6	91.1	93.7	90.9	91.5	88.7

CQS Q values:

Q1	Q2	Q3	Q4	Q5	Q6	Q7	Q8	Q9	Q10	Q11	Q12	Q13	Q14	Q15
92.4	96.6	90.1	90.1	93.7	96.3	93.4	94.8	97.8	95.6	95.6	95.7	95.7	93.1	92.9

CQS: 93.7



Color Parameters:

CCT	CRI	CRI R9	TM30 Rf	TM30 Rg	CQS	x	y	u	v	Δuv
3098 K	96.9	81.4	93.3	100.4	93.7	0.428	0.396	0.248	0.344	-0.0020

TM-30 Details

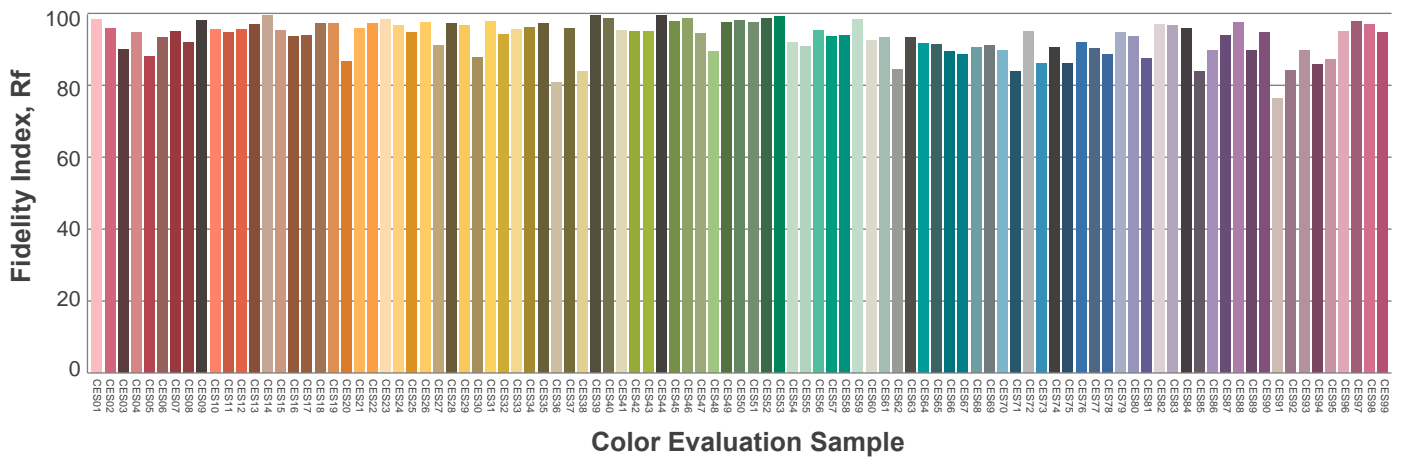
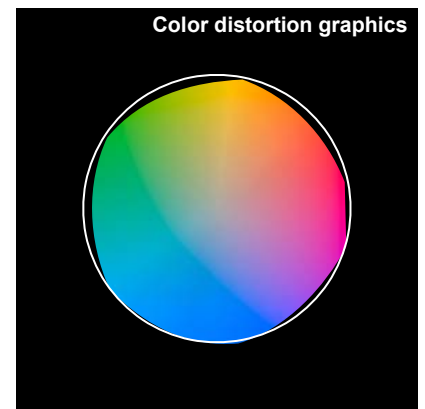
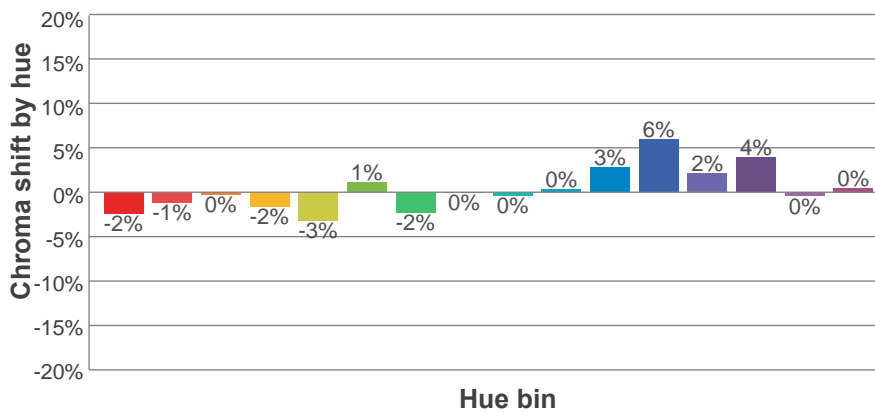
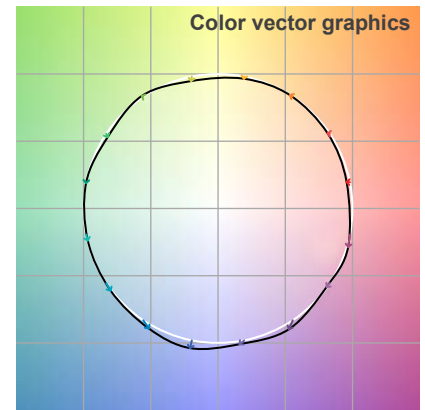
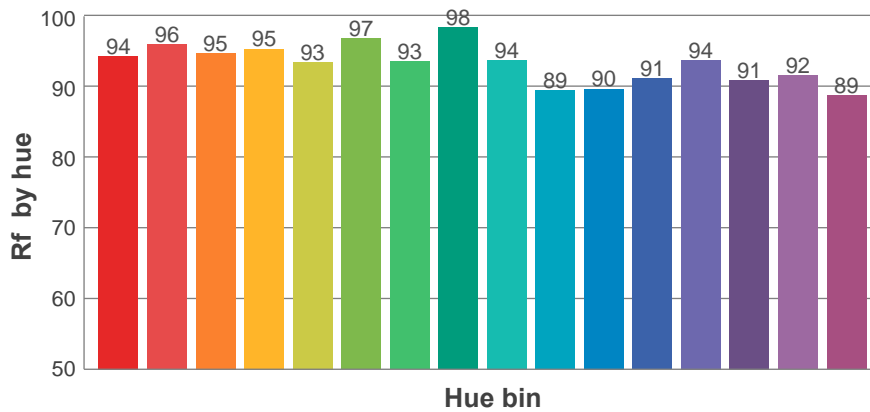
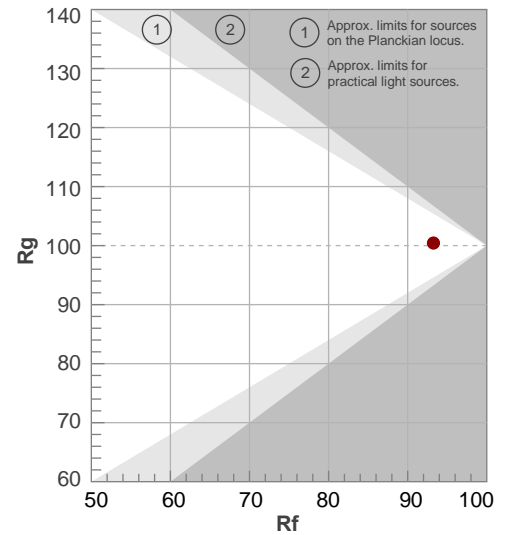
Rf 93.3

Fidelity index Rf

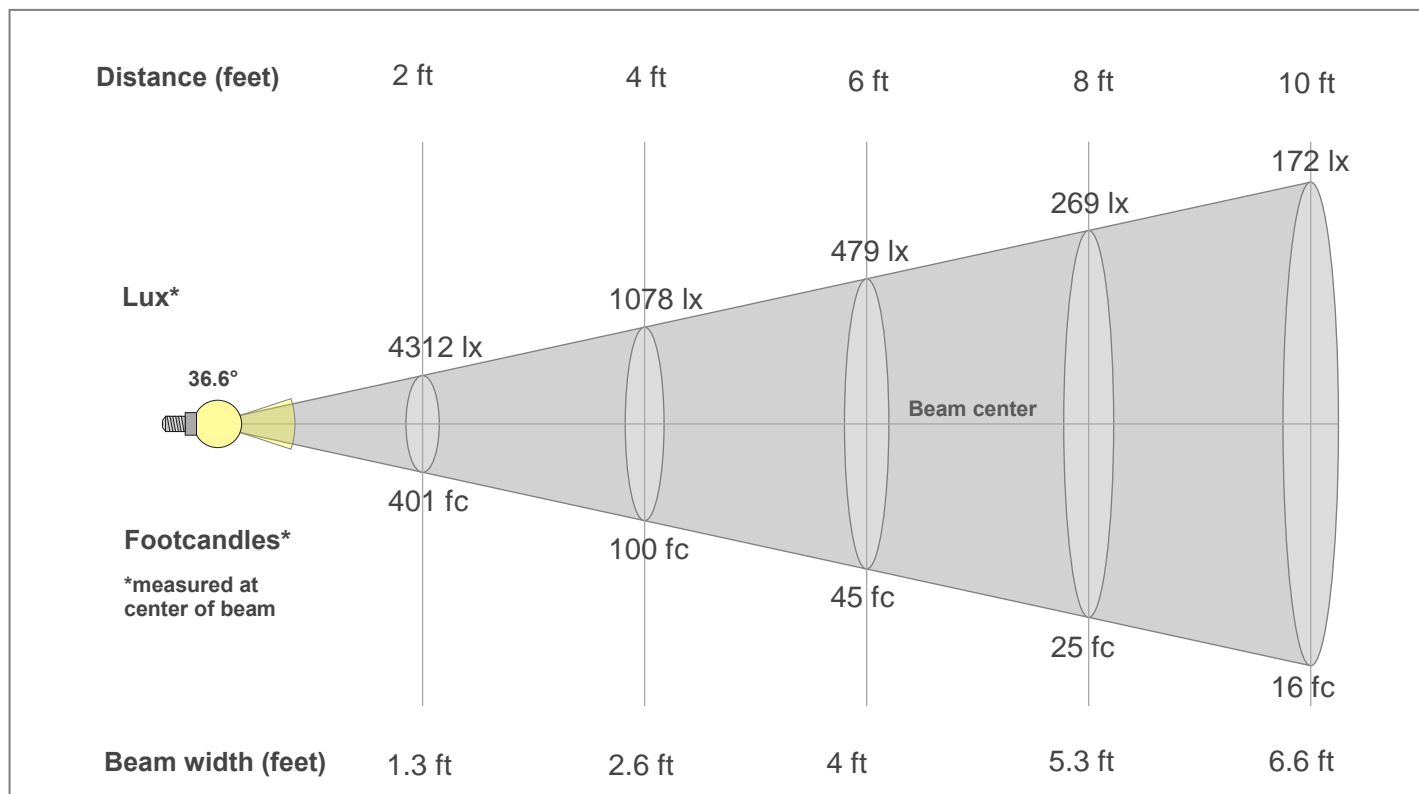
Rg 100.4

Gamut index Rg

Hue Bin	R _f	Shifts (%)	
		Chroma	Hue
1	94	-2%	1%
2	96	-1%	1%
3	95	0%	2%
4	95	-2%	0%
5	93	-3%	1%
6	97	1%	1%
7	93	-2%	1%
8	98	0%	1%
9	94	0%	4%
10	89	0%	6%
11	90	3%	7%
12	91	6%	0%
13	94	2%	-4%
14	91	4%	-6%
15	92	0%	-4%
16	89	0%	-9%



Beam Details



Beam Intensities from 1-20m

1m	2m	3m	4m	5m	6m	7m	8m	9m	10m	11m	12m	13m	14m	15m	16m	17m	18m	19m	20m
3.3ft	6.6ft	9.8ft	13.1ft	16.4ft	19.7ft	23ft	26.2ft	29.5ft	32.8ft	36.1ft	39.4ft	42.7ft	45.9ft	49.2ft	52.5ft	55.8ft	59.1ft	62.3ft	65.6ft
1602lx	401lx	178lx	100lx	64lx	45lx	33lx	25lx	20lx	16lx	13lx	11lx	9lx	8lx	7lx	6lx	6lx	5lx	4lx	4lx
148.9fc	37.2fc	16.5fc	9.3fc	6fc	4.1fc	3fc	2.3fc	1.8fc	1.5fc	1.2fc	1fc	0.9fc	0.8fc	0.7fc	0.6fc	0.5fc	0.5fc	0.4fc	0.4fc

Intensities in 0° c-plane

0°	2°	4°	6°	8°	10°	12°	14°	16°	18°	20°	22°	24°	26°	28°	30°	32°	34°	36°	38°
1602	1594	1557	1499	1422	1325	1212	1086	950	814	683	560	449	355	279	218	169	131	101	76
100%	99%	97%	94%	89%	83%	76%	68%	59%	51%	43%	35%	28%	22%	17%	14%	11%	8%	6%	5%

Intensities in 90° c-plane

0°	2°	4°	6°	8°	10°	12°	14°	16°	18°	20°	22°	24°	26°	28°	30°	32°	34°	36°	38°
1602	1590	1557	1499	1421	1326	1217	1098	967	828	690	561	447	351	274	213	164	128	99	75
100%	99%	97%	94%	89%	83%	76%	69%	60%	52%	43%	35%	28%	22%	17%	13%	10%	8%	6%	5%

Intensities in 180° c-plane

0°	2°	4°	6°	8°	10°	12°	14°	16°	18°	20°	22°	24°	26°	28°	30°	32°	34°	36°	38°
1602	1594	1557	1499	1422	1325	1212	1086	950	814	683	560	449	355	279	218	169	131	101	76
100%	99%	97%	94%	89%	83%	76%	68%	59%	51%	43%	35%	28%	22%	17%	14%	11%	8%	6%	5%

Intensities in 270° c-plane

0°	2°	4°	6°	8°	10°	12°	14°	16°	18°	20°	22°	24°	26°	28°	30°	32°	34°	36°	38°
1602	1590	1557	1499	1421	1326	1217	1098	967	828	690	561	447	351	274	213	164	128	99	75
100%	99%	97%	94%	89%	83%	76%	69%	60%	52%	43%	35%	28%	22%	17%	13%	10%	8%	6%	5%

Beam angle 50%	Field angle 10%	Cut-off angle 2.5%	Intensity ratio in 120°	Intensity ratio in 90°
36.6°	64.6°	84.2°	99.6%	98.8%