

Photometric / Colorimetric / Electric Report

Fixture Model:

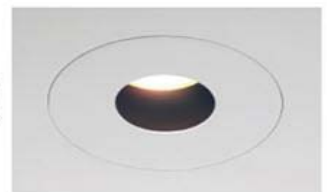
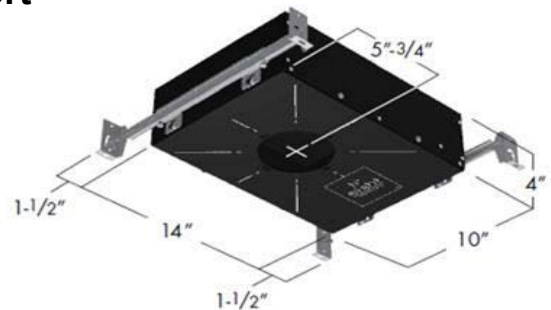
804S-J2S-WD-25-DIM1-8-1000-WD-FR-P-1-WH

Trim Model:

FR-P-1-WH

Date:

3/24/2022



Light efficiency:

41 Lumen/Watt

Light quality:

CRI: 97.0

Color temperature:

3106 K

CIE 1931:

x: 0.427
y: 0.395

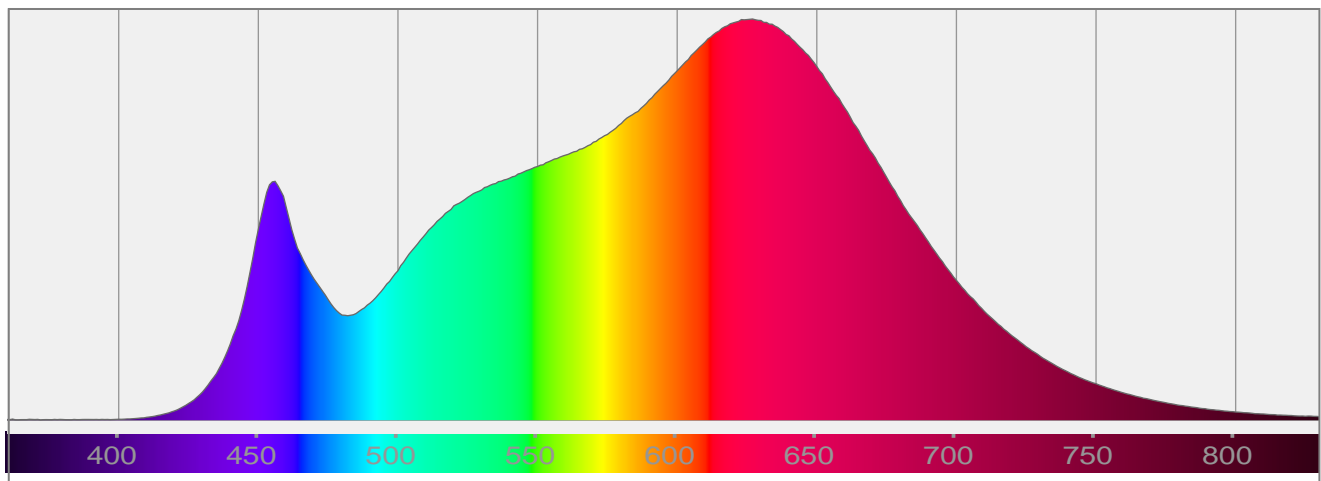
Output: 600 lm

Peak: 2248 cd

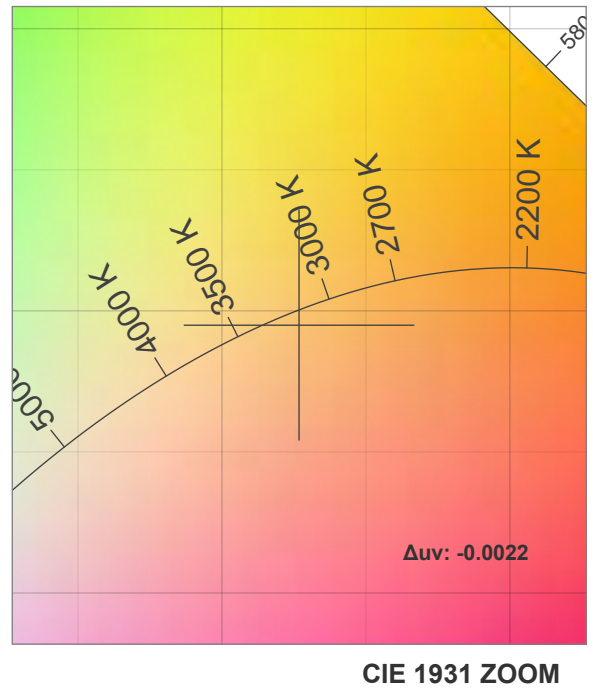
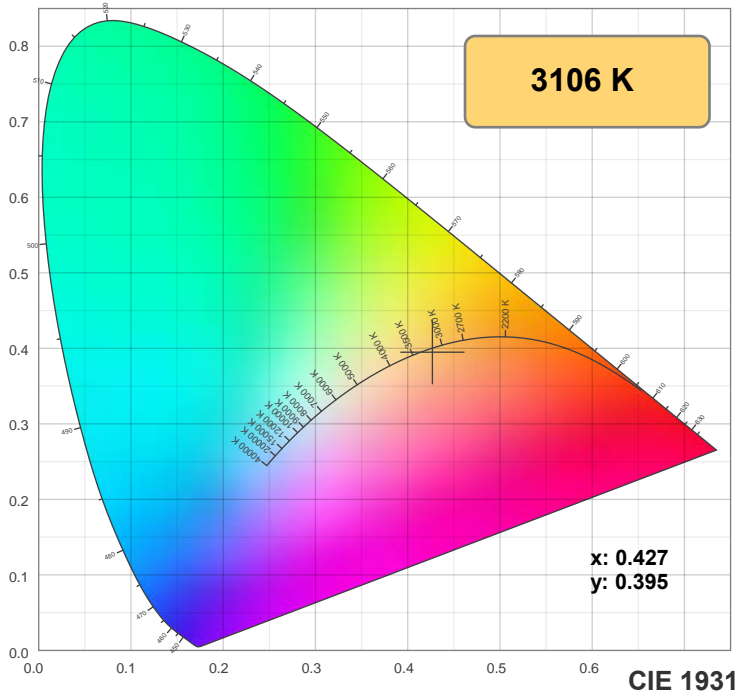
Power: 14.5 W

PF: 0.99

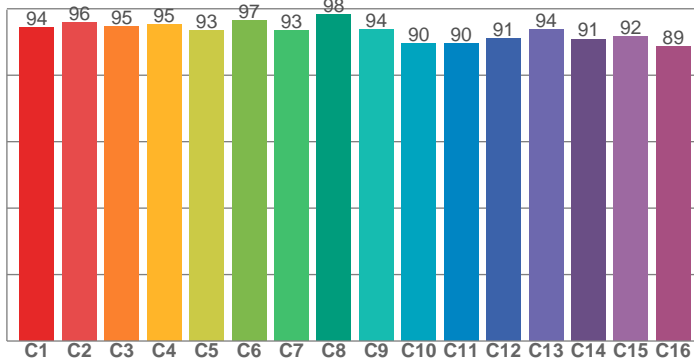
Spectra:



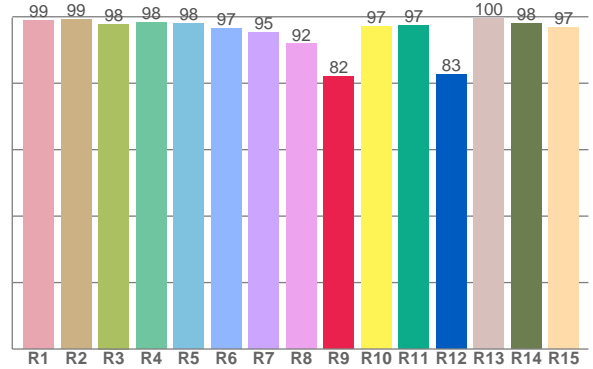
Color Details



TM-30: 93.3



CRI: 97.0 (R1-R8)



CRI R Values:

R1	R2	R3	R4	R5	R6	R7	R8	R9	R10	R11	R12	R13	R14	R15
98.8	99.2	97.8	98.2	98.1	96.5	95.3	91.8	81.9	97.2	97.5	82.7	99.6	97.9	96.7

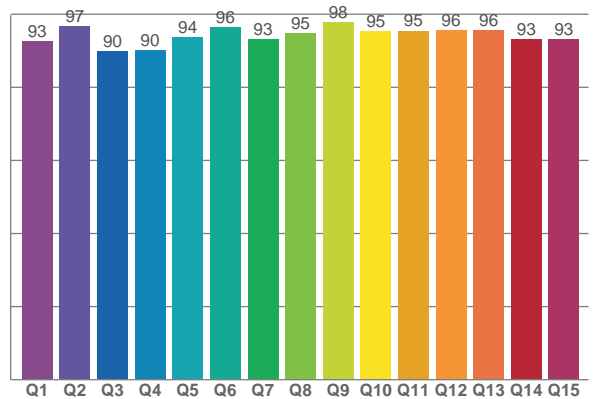
TM30 C Values:

C1	C2	C3	C4	C5	C6	C7	C8	C9	C10	C11	C12	C13	C14	C15	C16
94.4	95.9	94.5	95.4	93.4	96.6	93.5	98.3	93.8	89.5	89.6	91.1	93.7	90.9	91.6	88.6

CQS Q values:

Q1	Q2	Q3	Q4	Q5	Q6	Q7	Q8	Q9	Q10	Q11	Q12	Q13	Q14	Q15
92.6	96.7	89.9	90.0	93.8	96.3	93.2	94.7	97.8	95.5	95.5	95.6	95.7	93.2	93.1

CQS: 93.7



Color Parameters:

CCT	CRI	CRI R9	TM30 Rf	TM30 Rg	CQS	x	y	u	v	Δuv
3106 K	97.0	81.9	93.3	100.6	93.7	0.427	0.395	0.248	0.344	-0.0022

TM-30 Details

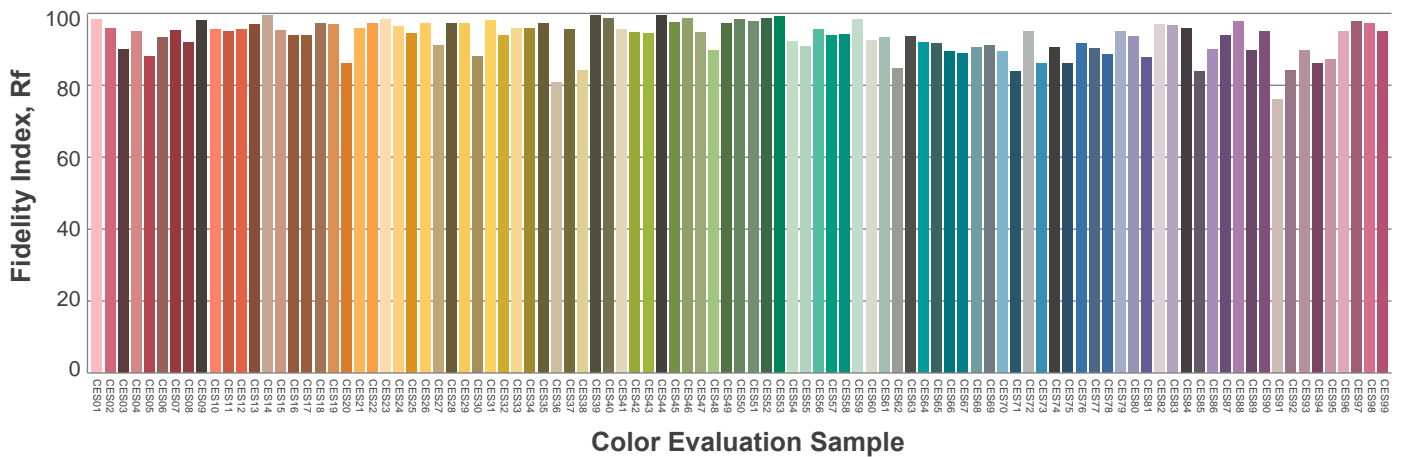
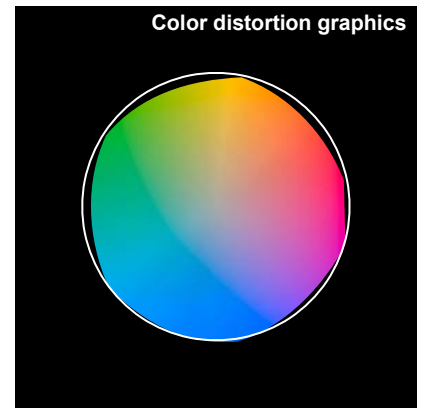
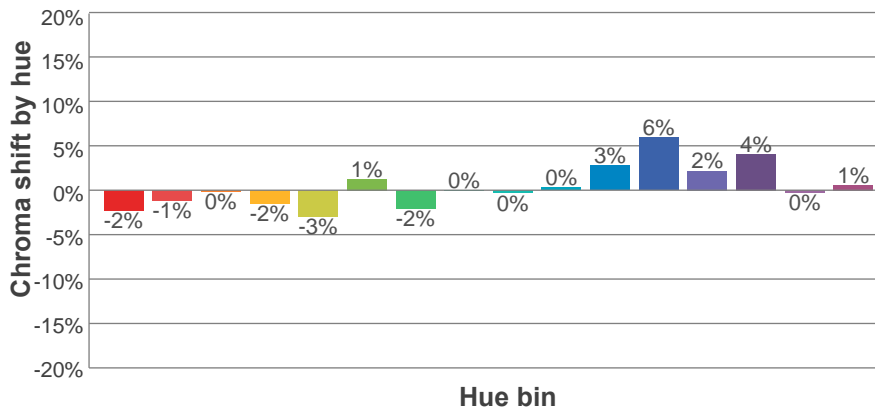
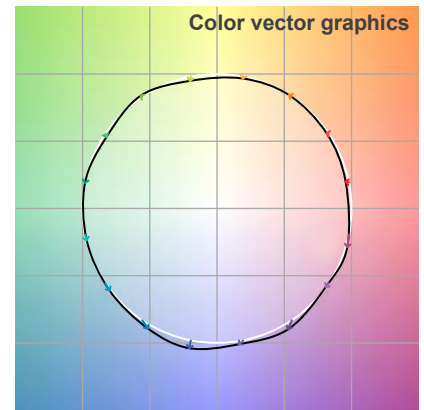
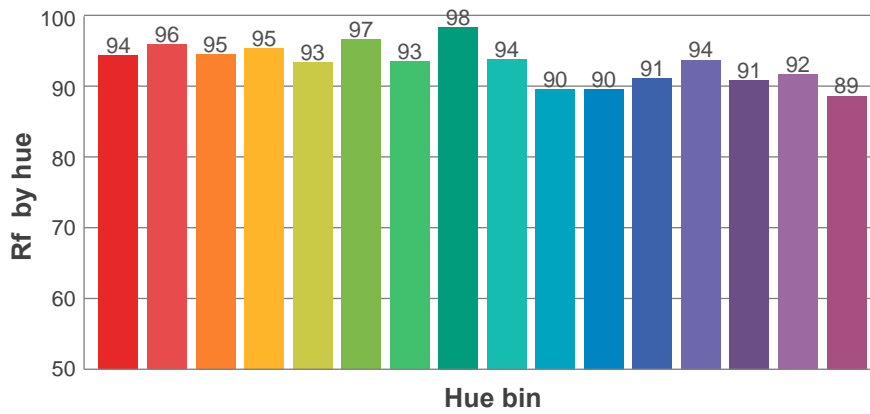
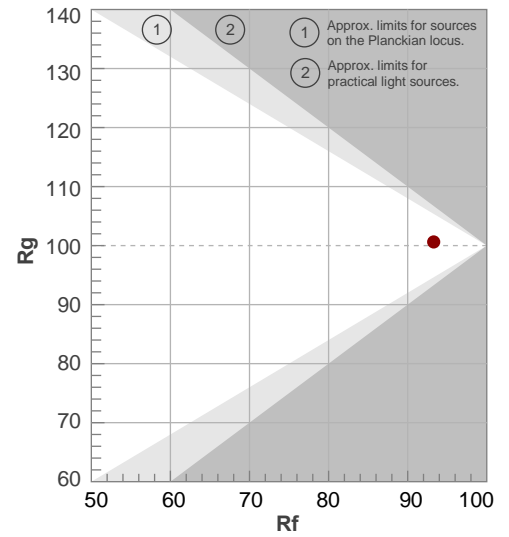
Rf 93.3

Fidelity index Rf

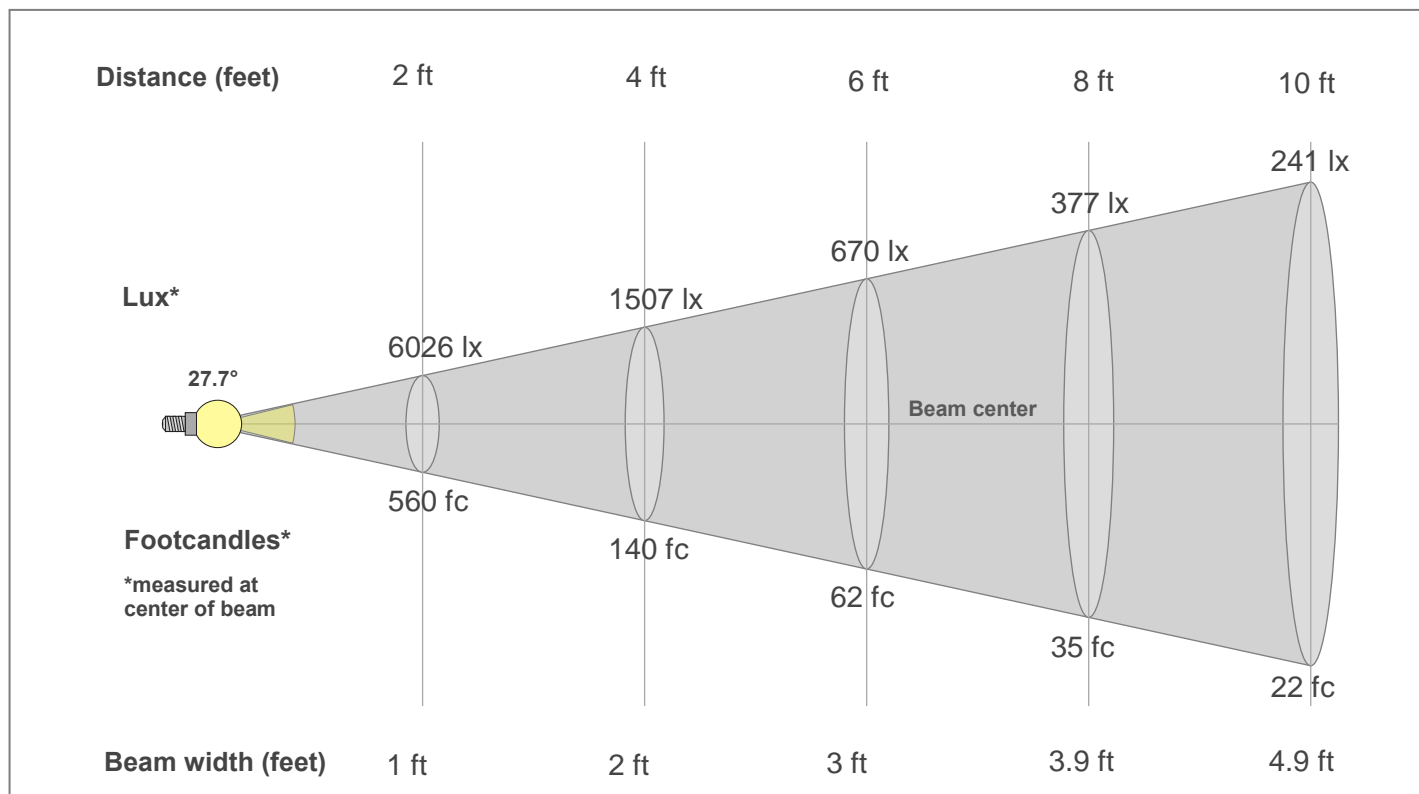
Rg 100.6

Gamut index Rg

Hue Bin	R _f	Shifts (%)	
		Chroma	Hue
1	94	-2%	1%
2	96	-1%	1%
3	95	0%	2%
4	95	-2%	0%
5	93	-3%	1%
6	97	1%	1%
7	93	-2%	1%
8	98	0%	0%
9	94	0%	4%
10	90	0%	6%
11	90	3%	7%
12	91	6%	0%
13	94	2%	-4%
14	91	4%	-6%
15	92	0%	-4%
16	89	1%	-9%



Beam Details



Beam Intensities from 1-20m

1m	2m	3m	4m	5m	6m	7m	8m	9m	10m	11m	12m	13m	14m	15m	16m	17m	18m	19m	20m
3.3ft	6.6ft	9.8ft	13.1ft	16.4ft	19.7ft	23ft	26.2ft	29.5ft	32.8ft	36.1ft	39.4ft	42.7ft	45.9ft	49.2ft	52.5ft	55.8ft	59.1ft	62.3ft	65.6ft
2239lx	560lx	249lx	140lx	90lx	62lx	46lx	35lx	28lx	22lx	19lx	16lx	13lx	11lx	10lx	9lx	8lx	7lx	6lx	6lx
208fc	52fc	23.1fc	13fc	8.3fc	5.8fc	4.2fc	3.3fc	2.6fc	2.1fc	1.7fc	1.4fc	1.2fc	1.1fc	0.9fc	0.8fc	0.7fc	0.6fc	0.6fc	0.5fc

Intensities in 0° c-plane

0°	2°	4°	6°	8°	10°	12°	14°	16°	18°	20°	22°	24°	26°	28°	30°	32°	34°	36°	38°
2239	2205	2110	1957	1765	1544	1323	1100	894	713	560	430	315	218	142	87	51	29	17	11
100%	98%	94%	87%	79%	69%	59%	49%	40%	32%	25%	19%	14%	10%	6%	4%	2%	1%	1%	0%

Intensities in 90° c-plane

0°	2°	4°	6°	8°	10°	12°	14°	16°	18°	20°	22°	24°	26°	28°	30°	32°	34°	36°	38°
2239	2212	2102	1946	1753	1545	1327	1111	907	725	562	419	305	214	142	90	55	32	19	11
100%	99%	94%	87%	78%	69%	59%	50%	41%	32%	25%	19%	14%	10%	6%	4%	2%	1%	1%	1%

Intensities in 180° c-plane

0°	2°	4°	6°	8°	10°	12°	14°	16°	18°	20°	22°	24°	26°	28°	30°	32°	34°	36°	38°
2239	2205	2110	1957	1765	1544	1323	1100	894	713	560	430	315	218	142	87	51	29	17	11
100%	98%	94%	87%	79%	69%	59%	49%	40%	32%	25%	19%	14%	10%	6%	4%	2%	1%	1%	0%

Intensities in 270° c-plane

0°	2°	4°	6°	8°	10°	12°	14°	16°	18°	20°	22°	24°	26°	28°	30°	32°	34°	36°	38°
2239	2212	2102	1946	1753	1545	1327	1111	907	725	562	419	305	214	142	90	55	32	19	11
100%	99%	94%	87%	78%	69%	59%	50%	41%	32%	25%	19%	14%	10%	6%	4%	2%	1%	1%	1%

Beam angle 50%	Field angle 10%	Cut-off angle 2.5%	Intensity ratio in 120°	Intensity ratio in 90°
27.7°	51.6°	63.5°	99.5%	99.3%