

Photometric / Colorimetric / Electric Report

Fixture Model:

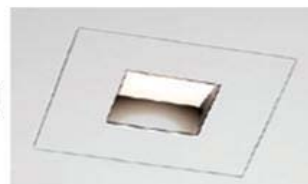
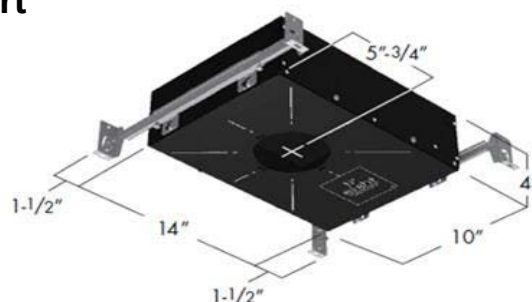
804S-J2S-HI-3-30-10-FL-PR1-8-1000-HI-3-FS-P-1-WH-WW-8-20d

Trim Model:

FS-P-1-WH-WW-8

Date:

12/6/2023



Light efficiency:

29 Lumen/Watt

Light quality:

CRI: 96.2

Color temperature:

3003 K

CIE 1931:

x: 0.434
y: 0.398

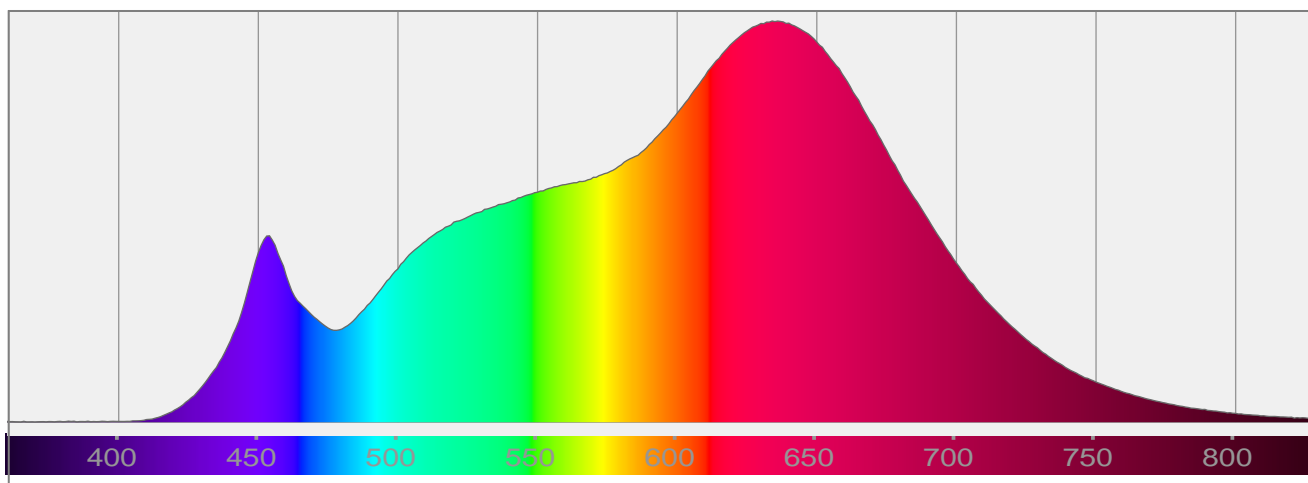
Output: 427 lm

Peak: 312 cd

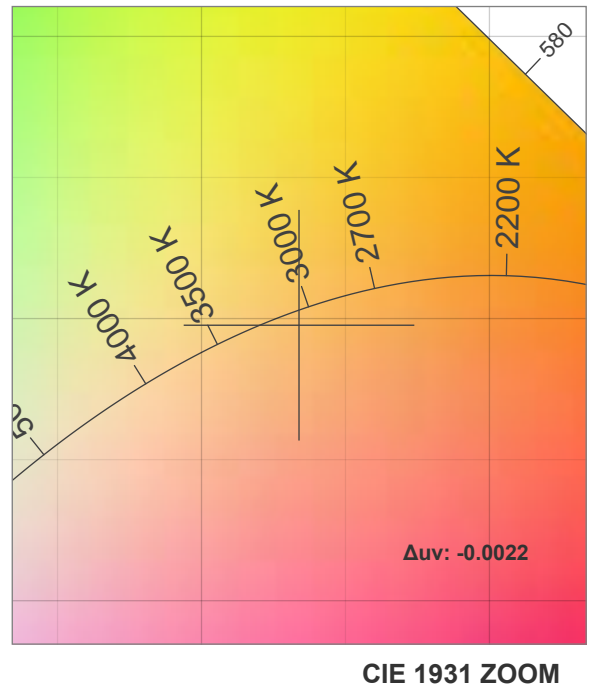
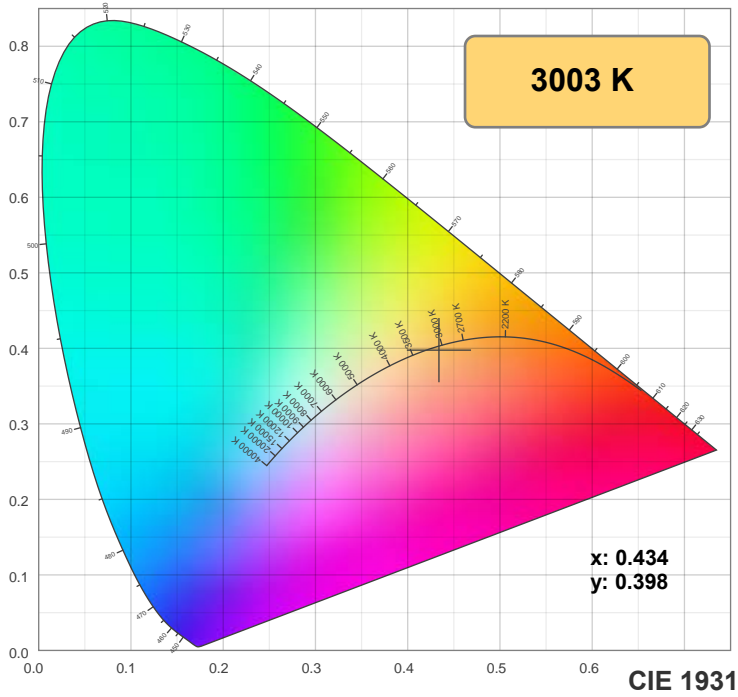
Power: 14.8 W

PF: 0.99

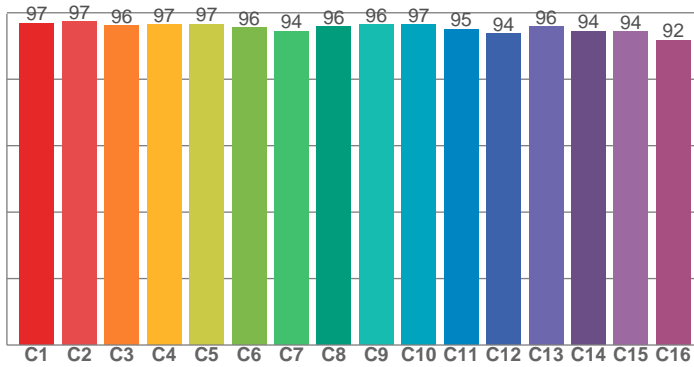
Spectra:



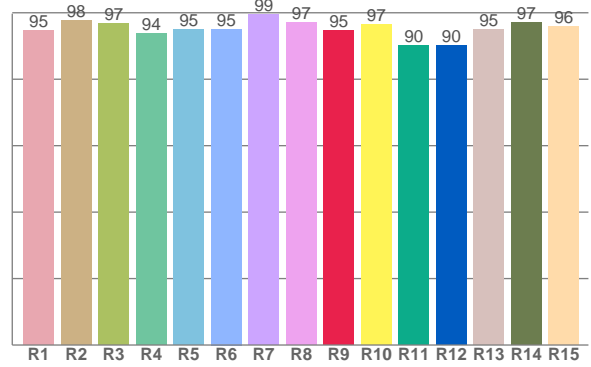
Color Details



TM-30: 95.7



CRI: 96.2 (R1-R8)



CRI R Values:

R1	R2	R3	R4	R5	R6	R7	R8	R9	R10	R11	R12	R13	R14	R15
94.8	97.7	96.8	93.9	95.1	95.1	99.4	97.2	94.6	96.5	90.1	90.2	95.1	97.1	95.8

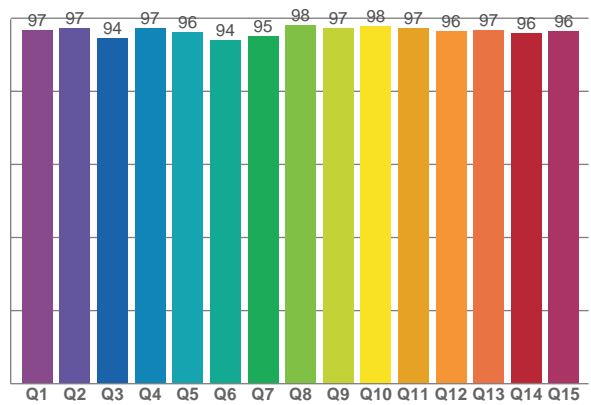
TM30 C Values:

C1	C2	C3	C4	C5	C6	C7	C8	C9	C10	C11	C12	C13	C14	C15	C16
96.9	97.2	96.1	96.5	96.6	95.6	94.5	95.9	96.4	96.5	95.1	93.7	95.8	94.5	94.3	91.8

CQS Q values:

Q1	Q2	Q3	Q4	Q5	Q6	Q7	Q8	Q9	Q10	Q11	Q12	Q13	Q14	Q15
96.7	97.3	94.5	97.3	96.2	93.9	95.0	98.2	97.3	97.9	97.2	96.5	96.8	95.9	96.4

CQS: 96.1



Color Parameters:

CCT	CRI	CRI R9	TM30 Rf	TM30 Rg	CQS	x	y	u	v	Δuv
3003 K	96.2	94.6	95.7	103.0	96.1	0.434	0.398	0.251	0.346	-0.0022

TM-30 Details

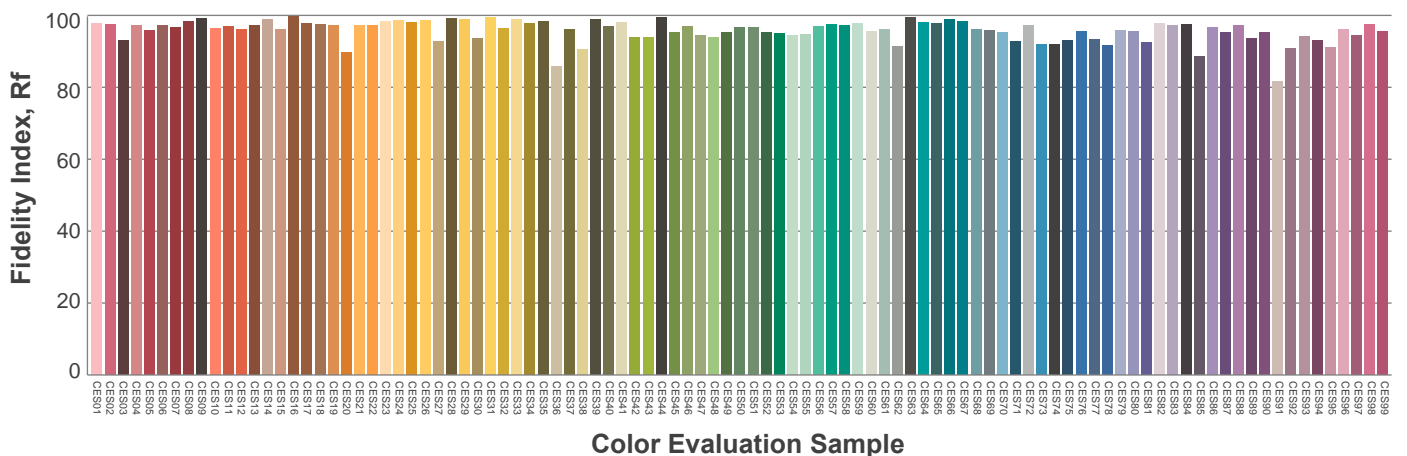
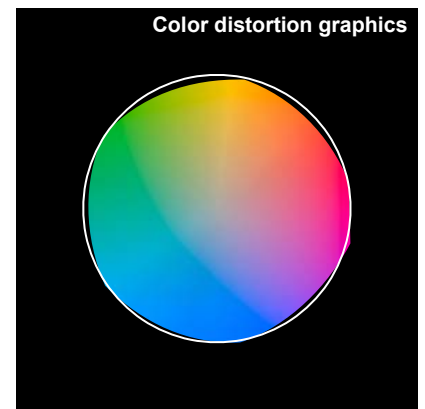
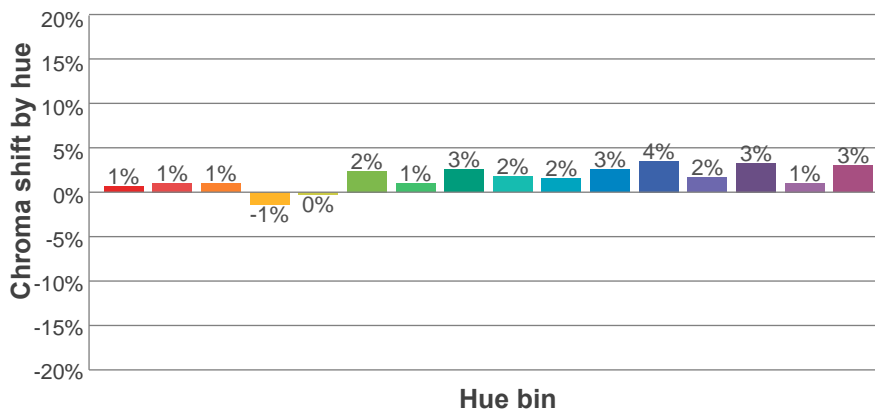
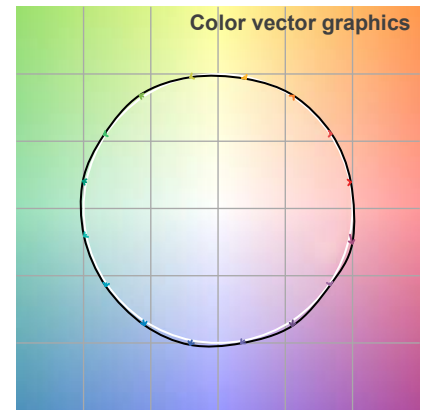
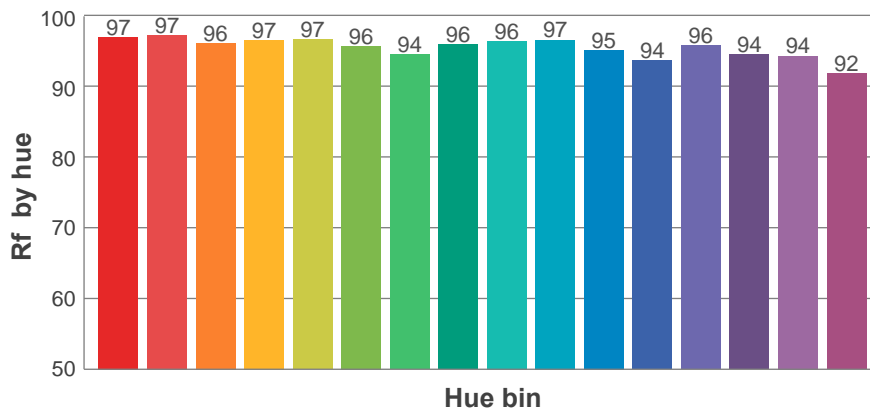
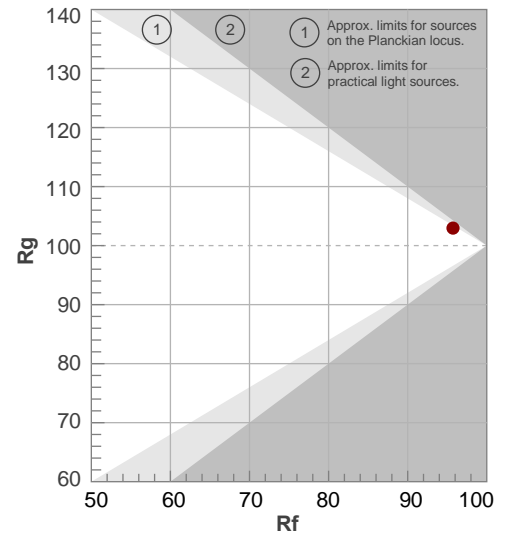
Rf 95.7

Fidelity index Rf

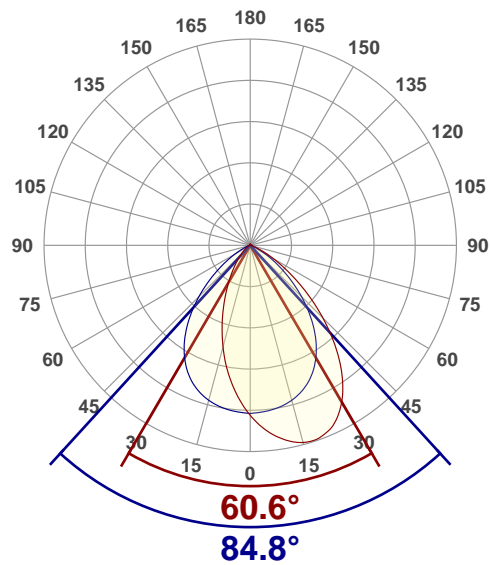
Rg 103.0

Gamut index Rg

Hue Bin	R _f	Shifts (%)	
		Chroma	Hue
1	97	1%	0%
2	97	1%	-1%
3	96	1%	0%
4	97	-1%	-1%
5	97	0%	1%
6	96	2%	2%
7	94	1%	2%
8	96	3%	0%
9	96	2%	1%
10	97	2%	2%
11	95	3%	3%
12	94	4%	-1%
13	96	2%	-3%
14	94	3%	-3%
15	94	1%	-1%
16	92	3%	-6%



Angular Distribution Through 0° and 90° Planes



Beam Angle: 84.8°W x 60.6°L

Beam Details

