

Photometric / Colorimetric / Electric Report

Fixture Model:

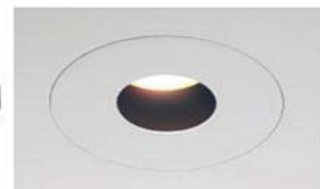
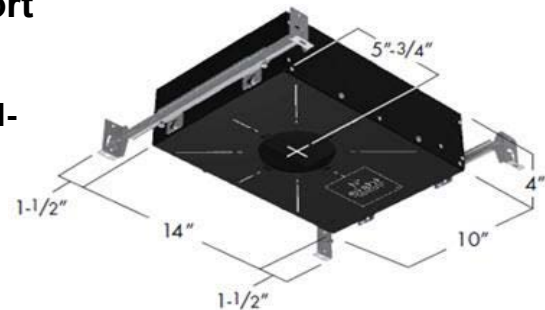
804S-J2S-HI-3-30-15-PR1-8-1000-HI-3-FR-P-1-WH-35d

Trim Model:

FR-P-1-WH

Date:

12/11/2023



Light efficiency:

52 Lumen/Watt

Light quality:

CRI: 97.4

Color temperature:

3020 K

CIE 1931:

x: 0.433
y: 0.398

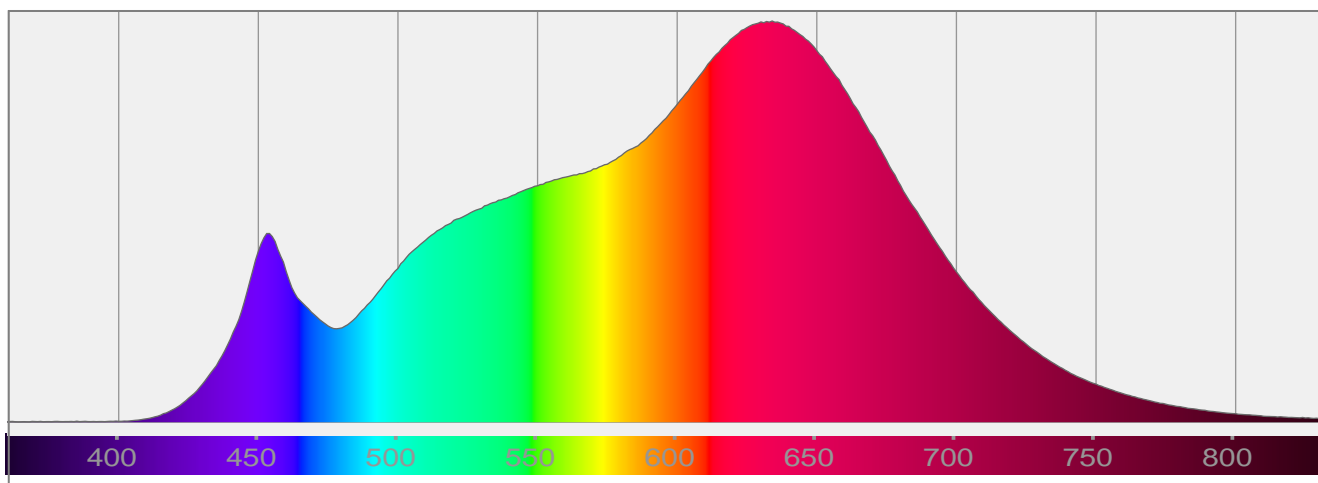
Output: 765 lm

Peak: 7225 cd

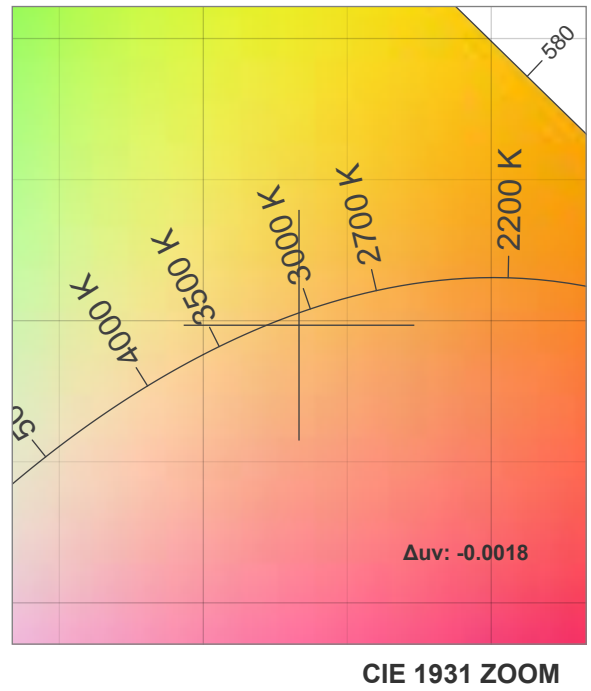
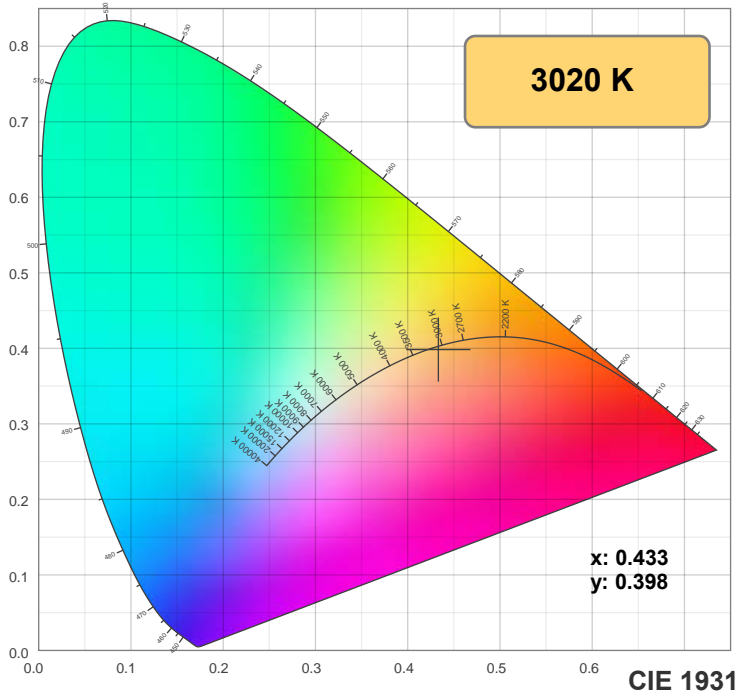
Power: 14.6 W

PF: 0.99

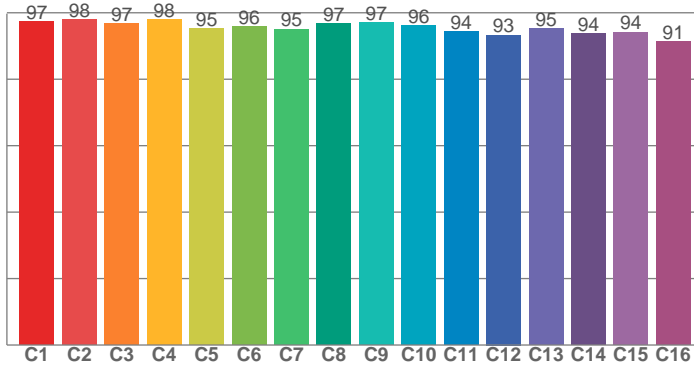
Spectra:



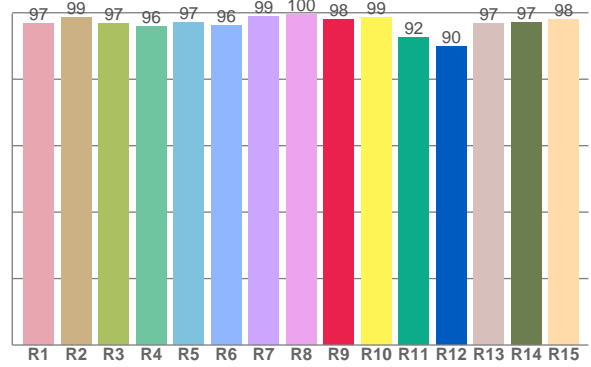
Color Details



TM-30: 95.8



CRI: 97.4 (R1-R8)



CRI R Values:

R1	R2	R3	R4	R5	R6	R7	R8	R9	R10	R11	R12	R13	R14	R15
96.7	98.6	96.8	95.7	97.0	96.3	98.8	99.5	97.9	98.7	92.5	89.9	96.8	97.1	98.1

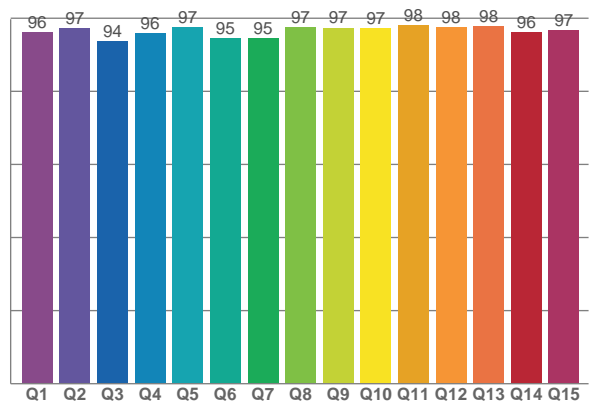
TM30 C Values:

C1	C2	C3	C4	C5	C6	C7	C8	C9	C10	C11	C12	C13	C14	C15	C16
97.3	98.0	96.8	97.9	95.3	95.9	95.1	96.8	97.1	96.1	94.3	93.3	95.3	93.8	94.2	91.4

CQS Q values:

Q1	Q2	Q3	Q4	Q5	Q6	Q7	Q8	Q9	Q10	Q11	Q12	Q13	Q14	Q15
96.2	97.2	93.6	96.0	97.5	94.6	94.6	97.4	97.4	97.2	98.2	97.6	97.8	96.1	96.7

CQS: 96.1



Color Parameters:

CCT	CRI	CRI R9	TM30 Rf	TM30 Rg	CQS	x	y	u	v	Δuv
3020 K	97.4	97.9	95.8	102.3	96.1	0.433	0.398	0.251	0.346	-0.0018

TM-30 Details

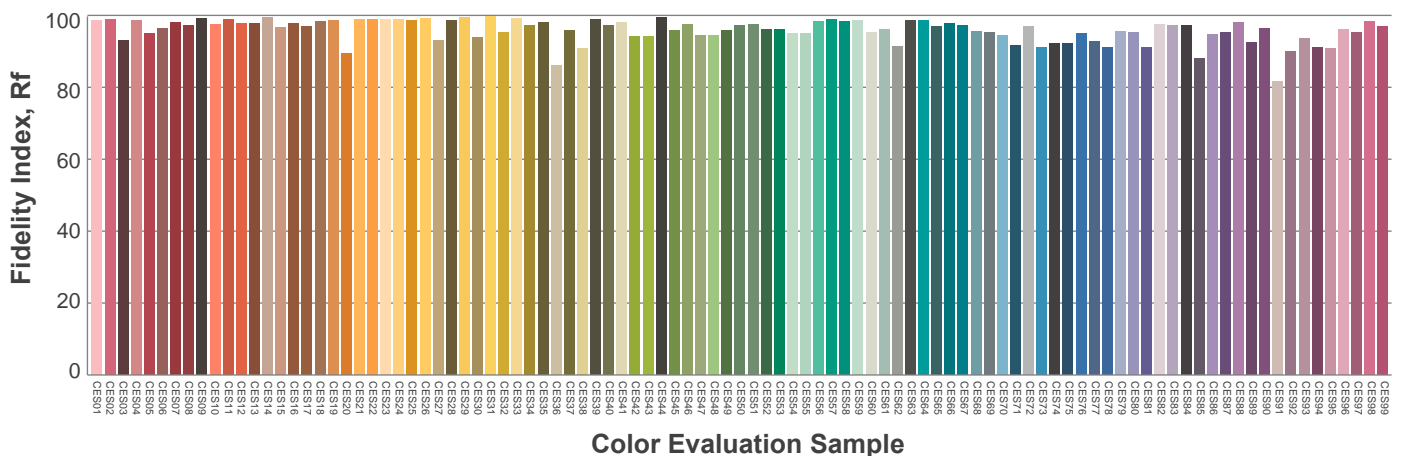
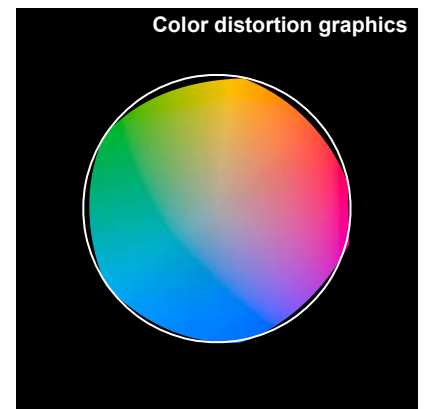
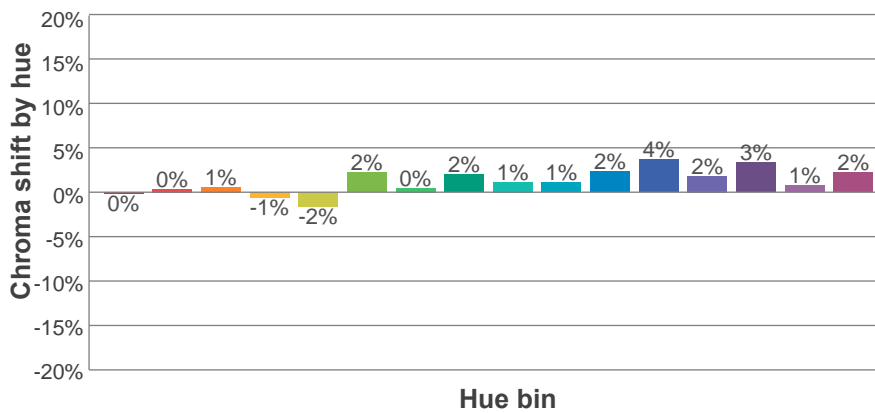
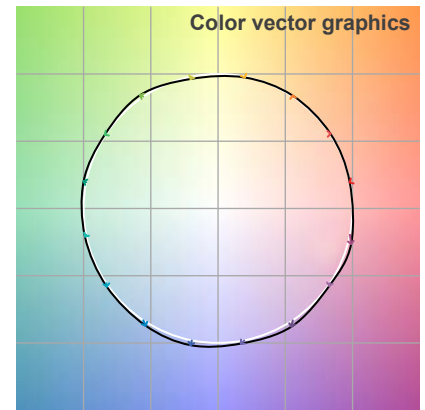
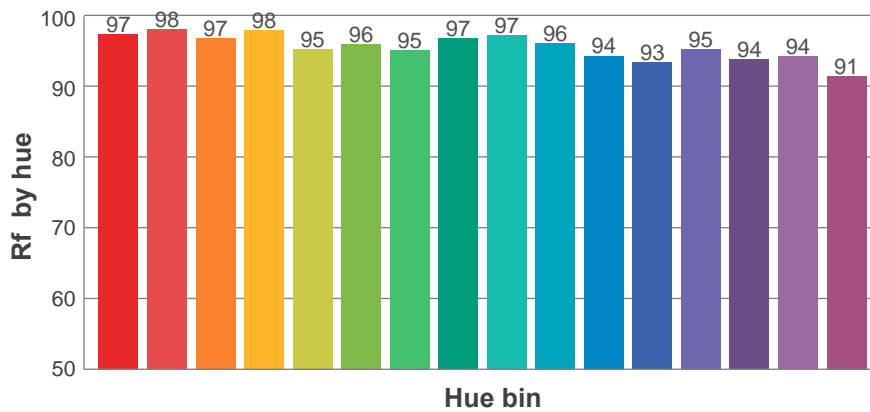
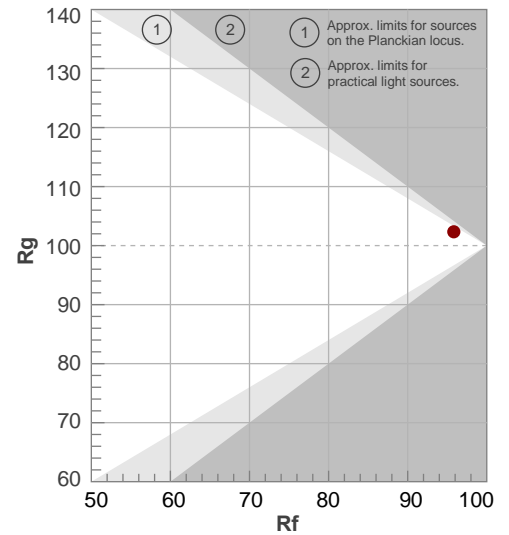
Rf 95.8

Fidelity index Rf

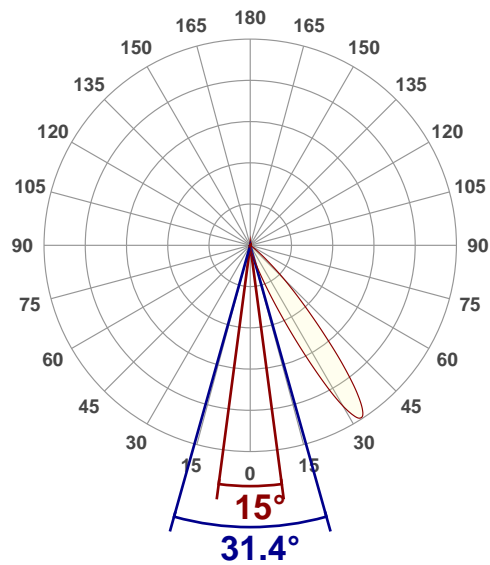
Rg 102.3

Gamut index Rg

Hue Bin	R _f	Shifts (%)	
		Chroma	Hue
1	97	0%	0%
2	98	0%	0%
3	97	1%	1%
4	98	-1%	0%
5	95	-2%	1%
6	96	2%	1%
7	95	0%	1%
8	97	2%	0%
9	97	1%	1%
10	96	1%	2%
11	94	2%	4%
12	93	4%	0%
13	95	2%	-3%
14	94	3%	-3%
15	94	1%	-2%
16	91	2%	-7%



Angular Distribution Through 0° and 90° Planes



Beam Angle: 31.4°W x 15°L

Beam Details

