

MPT2 MONOPOINT LED - INTEGRAL DRIVER SURFACE MOUNT 4" CANOPY

Project Name	
Date	Type
Prepared By	
Comments	
Catalog # MPT2- - - - / - / PR1-M - /	



N^o
eight
LIGHTING

526 Portal Street
Cotati, CA 94931
USA
P 707.794.0888
www.8lighting.com

All No. 8 Lighting fixtures and components are UL Listed to both U.S. and Canadian requirements. No. 8 Lighting trims and lamp modules are protected by one or more U.S. Patents. No. 8 Lighting reserves the right to change details of design, materials, and finish.

© 2023 No. 8 Lighting
Doc # 91201-13.2



PRODUCT FEATURES

MPT2-4S



CEILING MOUNT

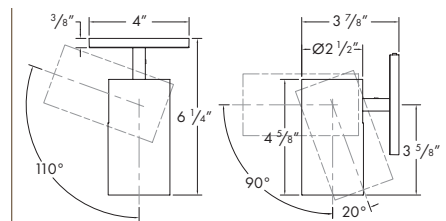
WALL MOUNT

MPT2-4R



CEILING MOUNT

WALL MOUNT



CEILING MOUNT

WALL MOUNT

(Shown with standard stem option - See Page 4 for additional details.)

MPT2 SERIES SPECIFICATION SUMMARY

	Static White Standard Output				Static White High Output		Warm Dimming	
	HI-2-27	HI-2	HI-27	HI	HI-27	HI	WD	WD-2
LED Option	HI-2-27	HI-2	HI-27	HI	HI-27	HI	WD	WD-2
Delivered Lumens	1037	1115	1016	1092	1326	1426	927	904
System Wattage	14.5	14.5	14	14	20	20	15	15
Efficacy	72	77	73	78	67	72	63	62
CRI	94	94	94	94	93	93	97	97
R9	63	63	59	59	58	58	81	78
CCT	2700K	3000K	2700K	3000K	2700K	3000K	3000-1800K	2800-2200K
Optic Options	10		15, 25, 40				15, 25, 40	
Color Consistency	2-Step						3-Step	
Optical Accessories	Hex Louver, Narrow, Medium, Wide, Extra Wide, Linear Spread, and 2400K, 2700K, 3500K Color Filters							
Adjustability	110° Tilt, 320° Rotation, Lockable							
Dimming Options	INTEGRAL: <1% Forward/Reverse Phase (120v)							
Canopy Options	Round/Square: 4"							
Finish Options	White, Satin Aluminum, Oil-Rubbed Bronze, Black							
Mounting Options	Ceiling/Wall Mount: 6, 12, 18, 24 Stem Options							
Junction Box	4" x 3-1/2" Deep (min.)							

Warm Dimming data shown for 3000K and 2800K.
See Performance Summaries for additional information.

PRODUCT SPECIFIER/PRODUCT ORDER NUMBER

MPT2-

MONOPOINT
SURFACE MOUNT

LED OPTIONS

STEM OPTIONS*

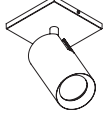
FINISH

OPTIC OPTIONS

OPTICAL ACCESSORIES
(Optional)

MPT2-4S

4" SQUARE Canopy for
INTEGRAL driver



MPT2-4R

4" ROUND Canopy for
INTEGRAL driver



HI-27

2700K White LED

HI

3000K White LED

HI-2-27*

2700K White LED

HI-2*

3000K White LED

WD†

3000-1800K Warm Dim
LED

WD-2†

2800-2200K Warm Dim
LED

*For use with 10° optic
only. Available in standard
output only.

†Available in standard output
only.

6

(standard)

12

18

24†

* See page 4 for additional
details.

† Not for use in wall mount
applications.



WH
WHITE



SA
SATIN ALUMINUM*



OB
OIL-RUBBED BRONZE*



BK
BLACK*

* Specialty finish.

10*

10°

Very Narrow Spot

15

15°

Narrow Spot

25

25°

Narrow Flood

40

40°

Flood

*For use with HI-2 LED
only.

HEX

Hex-Cell Louver

NSP

Narrow Softening Lens

NFL

Medium Softening Lens

FL

Wide Softening Lens

WFL

Extra Wide Softening Lens

LS

Linear Spread Lens

CF24*

2400K Color Filtering Lens

CF27*

2700K Color Filtering Lens

CF35*

3500K Color Filtering Lens

*For use with HI and HI-2
3000K LED options only.

PR1-M

DIMMING OPTION

OUTPUT

MOUNTING ACCESSORIES
(Optional)

PR1-M

INTEGRAL Forward or Reverse-Phase <1%
Dimming

1000

Standard output

1000-WD

Standard output – Warm Dimming

1400

High output

JB-5/8

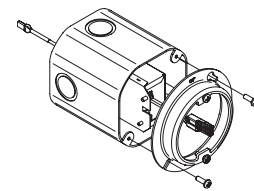
3-1/2" deep junction box with 5/8"
deep mud ring

JB-3/4

3-1/2" deep junction box with 3/4"
deep mud ring

JB-1

3-1/2" deep junction box with 1"
deep mud ring



MOUNTING NOTE: Models with 4" Canopy for INTEGRAL
drivers require a 4" x 3-1/2" deep (min) junction box with 3"
x 1/2" deep (min) mud ring. Junction box and mud ring can be
ordered with fixture (see Mounting Accessories) or supplied by
others.

Features

MPT2 Surface mount with 4" SQUARE or ROUND canopy for use with INTEGRAL driver. Rotates 320° and tilts 110°. Use for adjustable accent, wall wash, and general lighting applications. Multiple lengths available - see Page 4 for additional details. Features integrated snoot with 1/2" beveled regress for glare control.

Installation Notes

Ceiling or wall mountable. For low and standard output options, junction box may be installed in direct contact with standard or spray-foam thermal insulation with a max combined R-Value of R42. For high output options, junction box may be installed in direct contact with standard or spray-foam thermal insulation with a max combined R-Value of R30. For low and standard output options, ambient temperatures adjacent to fixture should not exceed 40°C (104°F). For high output options, ambient temperatures adjacent to fixture should not exceed 25°C (77°F). UL damp listed (covered ceiling/wall applications). Not for use in wet locations.

Finish Notes

White finish is field paintable. Lot variation may occur with specialty finishes. Ordering ALL fixtures at the same time is recommended to minimize finish variation.

LED Option and Accessory Notes

To ensure fixture to fixture color consistency, use of the same LED option with adjacent fixtures is recommended. One field interchangeable optic option included standard. Up to three additional optical accessories can be accommodated.

Dimming and Output Option Notes

0-10v dimming options are configured for linear control. DALI dimming options are configured for logarithmic control. No.8 Lighting conducts extensive testing to establish compatibility with many dimmer types. For a complete list of compatible dimmers, see 8lighting.com/resources-downloads. Outputs vary depending on LED type, trim type, and optical accessories used. For photometric files in PDF and IES formats, see 8lighting.com/mpt2-series.

Warranty

All No. 8 Lighting products are covered by a 5 year limited warranty. For specific warranty details and limitations, see 8lighting.com/resources-downloads.

JAB-2022 CA Title 24 Compliant.

MPT2 SERIES - PERFORMANCE SUMMARY

LED	OUTPUT	CCT	CRI	R9	Delivered Lumens	System Wattage	Delivered LPW
HI-27	1000	2700K	94	59	885-1016	14	63-73
HI	1000	3000K	94	59	952-1092	14	68-78
HI-27	1400	2700K	93	58	1180-1326	20	60-67
HI	1400	3000K	93	58	1269-1426	20	64-72
HI-2-27	1000	2700K	94	63	1037	14.5	72
HI-2	1000	3000K	94	63	1115	14.5	77
WD	1000-WD	3000-1800K	97	81	817-927	15	56-63
WD-2	1000-WD	2800-2200K	97	78	799-904	15	55-62

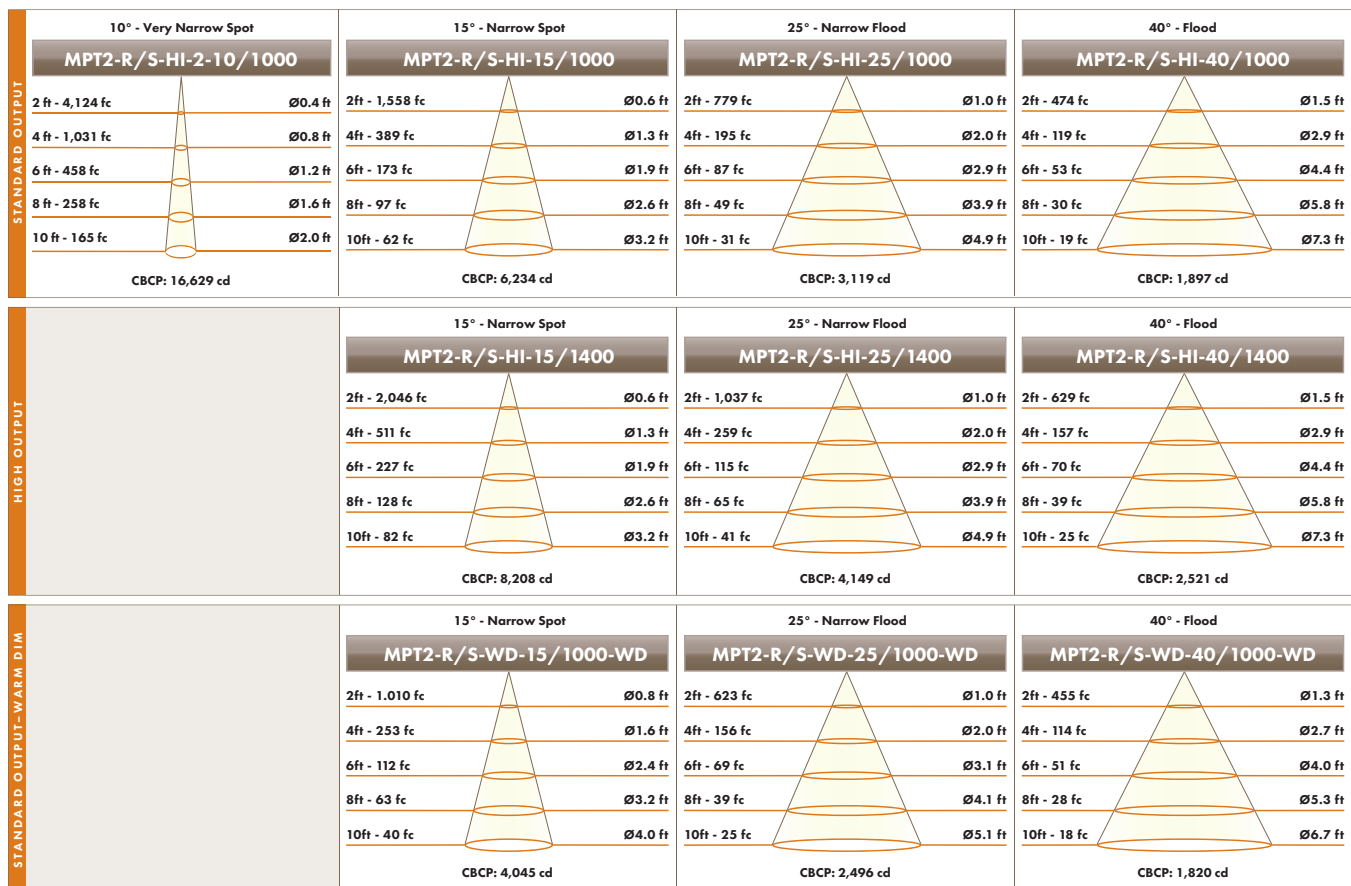
Performance summary for HI LED with 15°, 25°, and 40° optic options and HI-2 LED with 10° optic option.
 Performance summary for WD LED at 3000K and WD-2 LED at 2800K with 15°, 25°, and 40° optic options.

MPT2 SERIES - OPTICAL OPTIONS AND ACCESSORY PERFORMANCE SUMMARY

OPTIC OPTIONS	LED OPTION	BEAM ENHANCING LENS (OPTIONAL)*					
		+ HEX	+ NSP	+ NFL	+ FL	+ WFL	+ LS
10° Very Narrow Spot	HI-2	10°	14°	24°	43°	47°	13° x 29°
15° Narrow Spot	HI	16°	21°	31°	51°	63°	23° x 34°
15° Narrow Spot	WD/WD-2	20°	24°	54°	54°	70°	26° x 37°
25° Narrow Flood	HI	22°	29°	36°	55°	70°	30° x 45°
25° Narrow Flood	WD/WD-2	23°	30°	37°	58°	74°	31° x 48°
40° Flood	HI	30°	40°	45°	64°	83°	41° x 58°
40° Flood	WD/WD-2	28°	38°	42°	64°	82°	39° x 54°

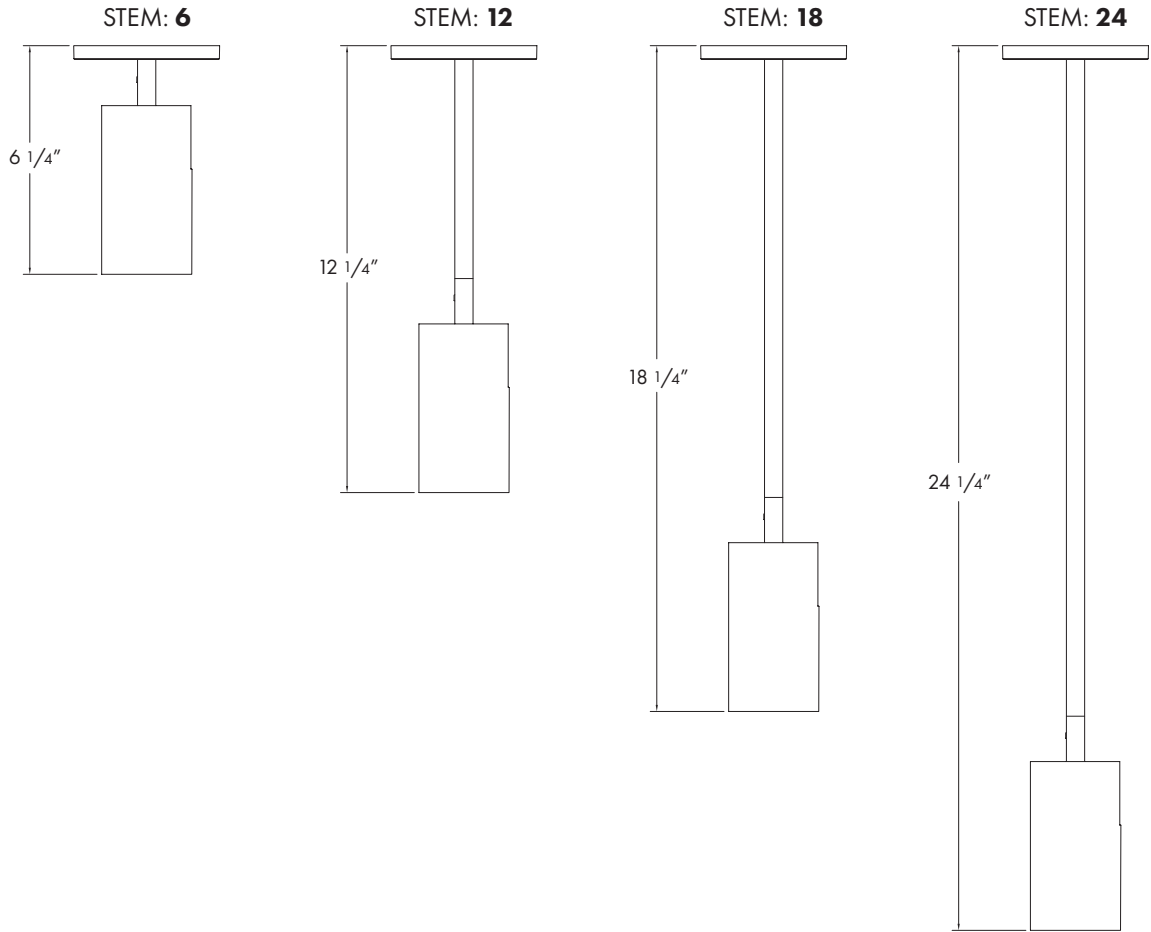
*Beam enhancing lens used in combination with 10°, 15°, 25°, or 40° optic to achieve desired beam spread.

MPT2 SERIES - CONE OF LIGHT DIAGRAMS



Performance shown for 3000K. Output varies by CCT.

MPT2 SERIES CEILING MOUNTED - 6, 12, 18, and 24 STEM OPTIONS



MPT2 SERIES WALL MOUNTED - 6, 12, and 18 STEM OPTIONS

