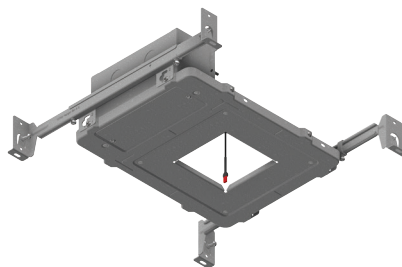


200-HD Series – Recessed LED

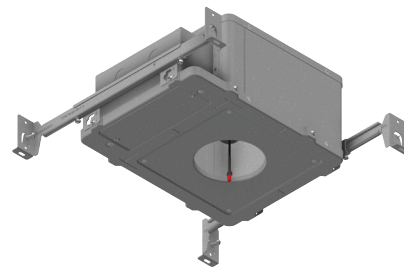
NEW CONSTRUCTION – HOSPITALITY, DESIGN, and COMMERCIAL APPLICATIONS

FEATURES

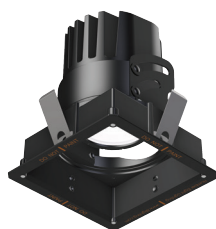
- Fully adjustable (0-30°vertical/ 360°horizontal) for general, accent, and wall wash lighting applications
- Type Non-IC delivers up to 2130 lumens and 83 LPW at 26 watts
- Type IC delivers up to 1751 lumens and 90 LPW at 19.5 watts
- Four 94 CRI White LED options: 2700K, 3000K, 3500K, and 4000K
- Two 97 CRI Warm Dim LED options: 3000-1800K and 2800-2200K
- Four beam spread options: 15°, 25°, 40°, and 60°
- Five beam enhancing lens options
- Eight dimming driver options
- Six Round or Square trim options: 1 - 7/8" aperture FLAT, 2 - 1/4" aperture BEVEL, and 2 - 3/4" angle-cut aperture WALL WASH
- Three trim mounting options: Flanged (for multiple ceiling types), Flangeless for sheetrock, and Flangeless for wood/stone
- Four trim finish and three trim lens options
- 2022 CA JA8 Compliant



Type Non-IC
(Round or Square)



Type IC/Airtight/Chicago Plenum
Rated
(Round or Square)



200-HD-S – ADJUSTABLE LED



200-HD-R – ADJUSTABLE LED

200-HD-S and 200-HD-R PERFORMANCE SUMMARY

Trim:	FLS-2-BV	FLR-2-BV	FLS-2-WW	FLR-2-WW	FLS-2	FLR-2
Delivered Lumens - Non-IC:	1942-2130	1872-2052	1530-1678	1464-1605	1555-1705	1408-1544
Delivered Lumens - IC:	1597-1751	1557-1707	1251-1372	1192-1307	1265-1387	1155-1266

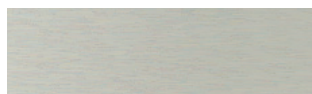
Performance range shown for 2700-4000K 94 CRI LED with 40° or 60° optic. Performance varies for each CCT and beam spread.



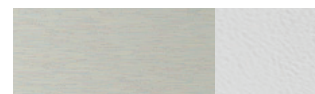
WHITE



OIL-RUBBED BRONZE



SATN ALUMINUM



SATN ALUMINUM w/WHITE FLANGE



526 Portal Street
Cotati, CA 94931
USA
P 707.794.0888
www.8lighting.com

All No. 8 Lighting fixtures and components are UL Listed to both U.S. and Canadian requirements. No. 8 Lighting trims and lamp modules are protected by one or more U.S. Patents. No. 8 Lighting reserves the right to change details of design, materials, and finish.

© 2023 No. 8 Lighting



09/2023

93003-05