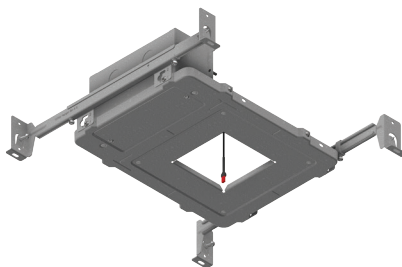


200 Series – Recessed LED

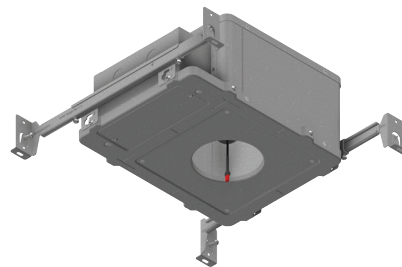
NEW CONSTRUCTION

FEATURES

- Three light engine options: **201** Fixed, **202** Adjustable (0-30° vertical/ 360°horizontal), and **203** Wall Wash deliver up to 1265 lumens at 14 watts
- Four 92 CRI White LED options: 2700K, 3000K, 3500K, and 4000K
- Two 97 and 95 CRI Warm Dim LED options: 3000-1800K and 2800-2200K
- Four beam spread options: 15°, 25°, 40°, and 60°
- Five beam enhancing lens options
- Nine dimming driver options
- Six Round or Square trim options: 1-7/8" aperture FLAT, 2-1/4" aperture BEVEL, and 2-3/4" angle-cut aperture WALL WASH
- Three trim mounting options: Flanged (for multiple ceiling types), Flangeless for sheetrock, and Flangeless for wood/stone
- Four trim finish options and three trim lens options rated for use in DRY, DAMP, or WET locations and residential steam applications
- Two housing options: Type Non-IC/ Airtight and Type IC/ Airtight/Chicago Plenum Rated
- 2022 CAJA8 Compliant

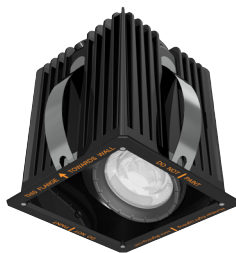


Type Non-IC
(Round or Square)



Type IC/Airtight/Chicago Plenum
Rated
(Round or Square)

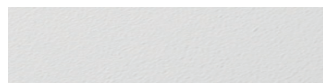
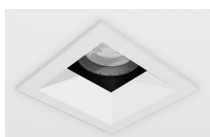
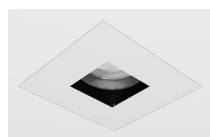
201/202/203 – FIXED/ADJUSTABLE/WALL WASH LED



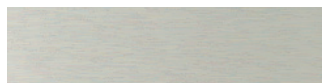
201, 202, and 203 PERFORMANCE SUMMARY

Model:	201-HI	201-WD	202-HI	202-WD	203-HI	203-WD
Delivered Lumens:	827-1265	529-750	785-1232	523-760	939-1059	714-727
Delivered Lumens Per Watt:	59-90	35-50	56-88	35-51	67-76	48

Performance range shown for models 201 and 202 with Square and Round 1-7/8" aperture FLAT and 2-1/4" aperture BEVEL trims, HI 2700-4000K Static White LED, and WD 3000K Warm Dim LED with 15-60° optic. Performance range for shown for model 203 with Square and Round 2-3/4" aperture WALL WASH trim, 2700-4000K 92 CRI LED, and WD 3000K Warm Dim LED with 40° optic.



WHITE



SATIN ALUMINUM



SATIN ALUMINUM w/ WHITE FLANGE



OIL-RUBBED BRONZE



526 Portal Street
Cotati, CA 94931
USA
P 707.794.0888
www.8lighting.com

All No. 8 Lighting fixtures and components are UL Listed to both U.S. and Canadian requirements. No. 8 Lighting trims and lamp modules are protected by one or more U.S. Patents. No. 8 Lighting reserves the right to change details of design, materials, and finish.

© 2023 No. 8 Lighting



09/2023

93001-05