

TRIM: **FLINR-BV-W** - BEVEL SERIES™ / FLANGED ROUND

4" TRIM, 1 3/4" APERTURE FOR WOOD/STONE/ACOUSTIC TILE/SHEETROCK CEILING APPLICATIONS

Project Name	
Date	Type
Prepared By	
Comments	
Catalog # FLINR - BV - W - /	



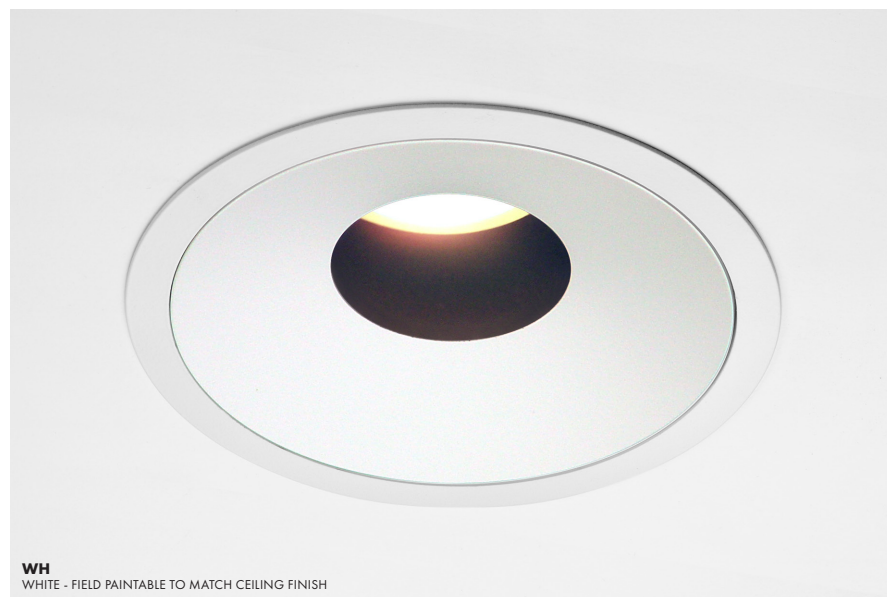
526 Portal Street
Cotati, CA 94931
USA
P 707.794.0888
F 707.795.4379
www.8lighting.com

All No. 8 Lighting 800 Series trims are UL/CSA listed and CE Certified. No. 8 Lighting trims and lamp modules are protected by one or more U.S. Patents. No. 8 Lighting reserves the right to change details of design, materials, and finish.

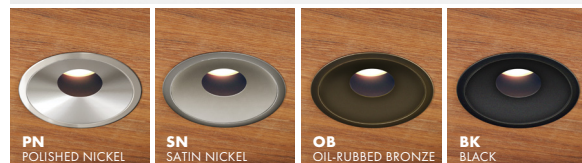
© 2022 No. 8 Lighting
Doc # 91337-13.0



PRODUCT FEATURES



WH
WHITE - FIELD PAINTABLE TO MATCH CEILING FINISH



Trim Assembly

- **FLINR-BV-W** flanged trim bevels from finished ceiling to 1/2" above ceiling surface. Designed for wood, stone, acoustic tile, or sheetrock ceilings.
- 4" trim plate with minimal 1 3/4" aperture.
- Optimized for use with type **J2/J2S** and **K2S** lamp modules. Not recommended for use with **M2/M2S** lamp modules.
- Field adjustable to accommodate ceiling thicknesses between 1/2" - 1 1/2".
- Die-cast from Zinc alloy for maximum strength, stability, and corrosion resistance.
- Unique magnetic trim plate is removable without marring finishes.
- Works with all Number Eight **800 Series** housings.
- Available factory installed trim lens options are UL WET LISTED and IP54 Rated for use in DRY, DAMP, or WET locations (covered ceiling applications only). Approved for use in residential steam applications. Not for use in commercial steam applications.
- Available in many designer finishes including: **WH** - White (Field paintable to match ceiling), **PN** - Polished Nickel, **SN** - Satin Nickel, **OB** - Oil-Rubbed Bronze, and **BK** - Black. Note: Lot variations in specialty finishes may occur. Ordering ALL trim kits at the same time is recommended.

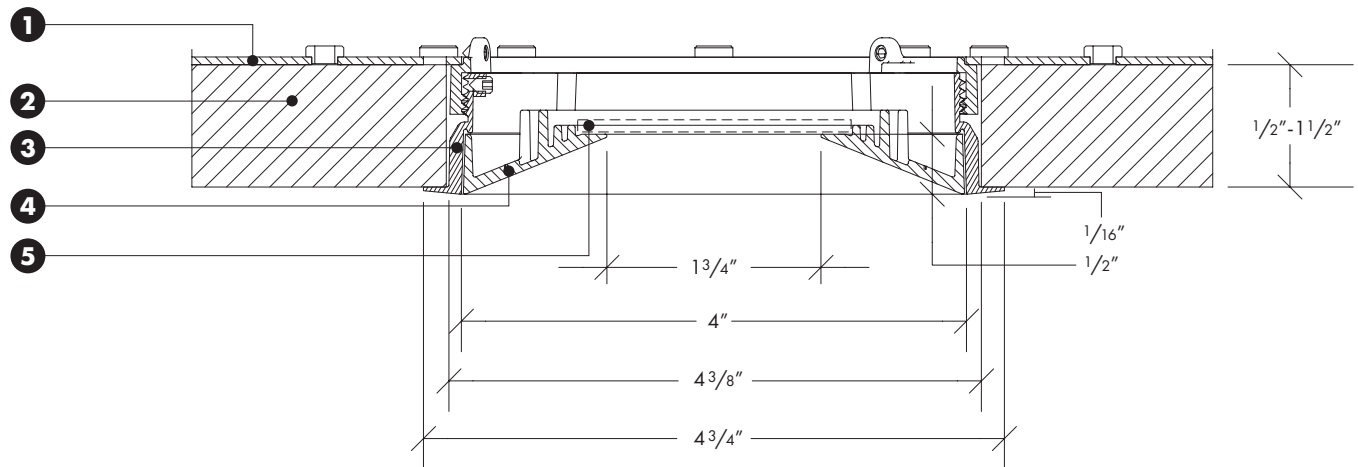
Warranty

All No. 8 Lighting products are covered by a 5 year limited warranty. Products installed in residential steam applications are covered by a 2 year limited warranty. For specific warranty details and limitations, see 8lighting.com/resources-downloads.

PRODUCT SPECIFIER/PRODUCT ORDER NUMBER

FLINR-BV		-		W		-		/			
TRIM ASSEMBLY		+		TRIM APPLICATION		+		TRIM FINISH		/ LENS OPTIONS	
<p>FLINR-BV 4 3/4" ROUND flanged INSET trim 4" ROUND trim plate w/ 1 3/4" aperture BEVELS from finished ceiling to 1/2" above</p>		<p>W WOOD/STONE/ACOUSTIC TILE/SHEETROCK ceiling applications (1/2" min - 1 1/2" max)</p>		<p>WH WHITE - Field paintable to match ceiling finish</p> <p>PN POLISHED NICKEL*</p> <p>SN SATIN NICKEL*</p> <p>OB OIL-RUBBED BRONZE*</p> <p>BK BLACK*</p> <p>* Specialty finish. Additional lead time required.</p>		<p>CL CLEAR LENS installed in trim plate*</p> <p>SF SOFT FOCUS LENS installed in trim plate*</p> <p>* UL Wet listed and IP54 Rated.</p>					

TRIM ASSEMBLY CROSS SECTION DETAIL



- 1) Housing**
- 2) Wood/Stone/Acoustic Tile/Sheetrock Ceiling Material** – Accommodates all thickness from 1/2" to 1 1/2".
- 3) Flanged Inset Trim Kit** – 4 3/4" wide flanged trim overlaps 4 3/8" ceiling cut out. Height and rotation can be adjusted before or after ceiling installation.
- 4) Trim Plate** – Features unique magnetic attachments. Bevels from finished ceiling to 1/2" above.
- 5) Lens (optional)** – Factory installed into trim plate. UL WET LISTED and IP54 Rated for use in DRY, DAMP, or WET locations (covered ceiling applications only). Approved for use in residential steam applications. Not for use in commercial steam applications.

Note: Cross sections are for illustration purposes only. Refer to W-Series trim installation instructions for complete installation details.