

TRIM: **INR-BV-P** - BEVEL SERIES™ /ROUND

4" TRIM, 1 3/4" APERTURE FOR PLASTER/SHEETROCK CEILING APPLICATIONS

Project Name	
Date	Type
Prepared By	
Comments	
Catalog # INR - BV - P - 1 - /	



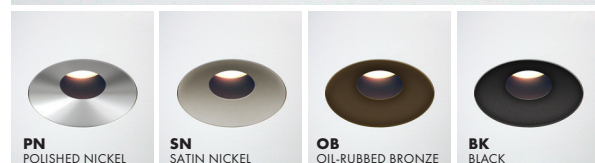
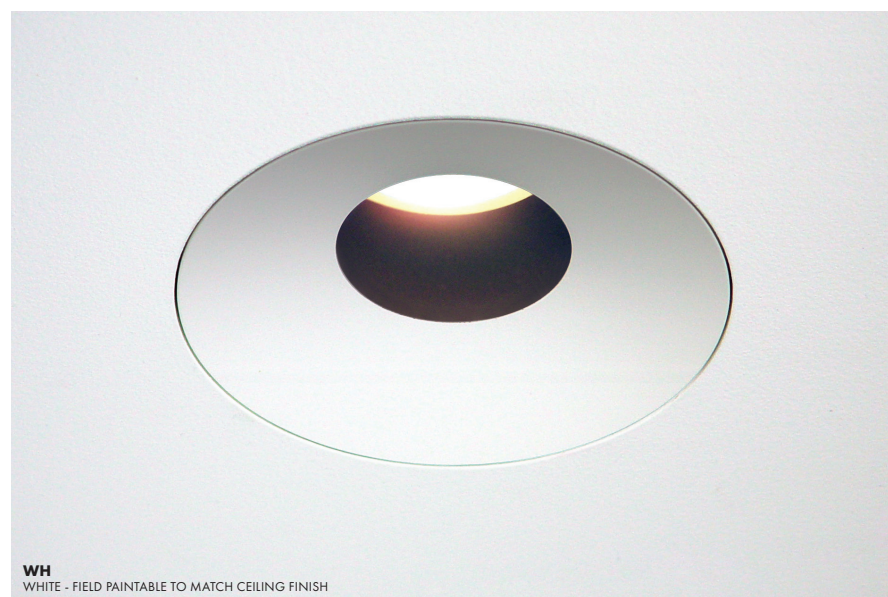
526 Portal Street
Cotati, CA 94931
USA
P 707.794.0888
F 707.795.4379
www.8lighting.com

All No. 8 Lighting 800 Series trims are UL/CSA listed and CE Certified. No. 8 Lighting trims and lamp modules are protected by one or more U.S. Patents. No. 8 Lighting reserves the right to change details of design, materials, and finish.

© 2022 No. 8 Lighting
Doc # 91331-13.0




PRODUCT FEATURES



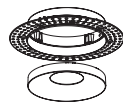
Trim Assembly

- **INR-BV-P** trim bevels from finished ceiling to 1/2" above ceiling surface. Designed for sheetrock ceilings with painted or integral color drywall compound/plaster finishes.
- 4" trim plate with minimal 1 3/4" aperture.
- Optimized for use with type **J2/J2S** and **K2S** lamp modules. Not recommended for use with **M2/M2S** lamp modules.
- Accommodates 1/2" - 1 1/2" thick ceilings. Note: ceiling thicknesses less than 1" require additional 1/2" clearance above housing.
- Die-cast from Zinc alloy for maximum strength, stability, and corrosion resistance.
- Unique magnetic trim plate is removable without marring finishes.
- Works with all Number Eight **800 Series** housings.
- Available factory installed trim lens options are **UL WET LISTED** and **IP54 Rated** for use in DRY, DAMP, or WET locations (covered ceiling applications only). Approved for use in residential steam applications. Not for use in commercial steam applications.
- Available in many designer finishes including: **WH** - White (Field paintable to match ceiling), **PN** - Polished Nickel, **SN** - Satin Nickel, **OB** - Oil-Rubbed Bronze, and **BK** - Black. Note: Lot variations in specialty finishes may occur. Ordering ALL trim kits at the same time is recommended.

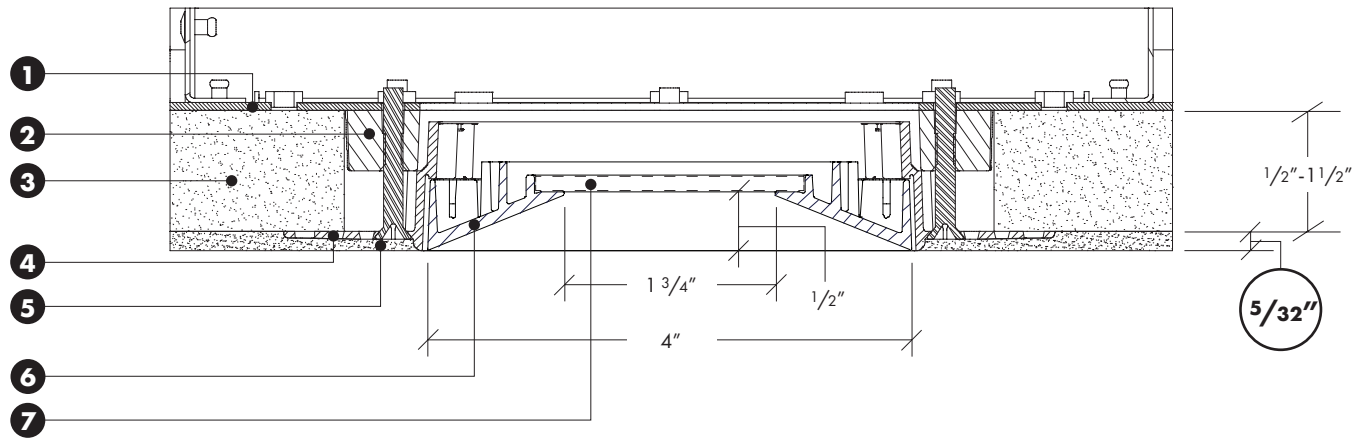
Warranty

All No. 8 Lighting products are covered by a 5 year limited warranty. Products installed in residential steam applications are covered by a 2 year limited warranty. For specific warranty details and limitations, see 8lighting.com/resources-downloads.

PRODUCT SPECIFIER/PRODUCT ORDER NUMBER

INR-BV		P		1			
TRIM ASSEMBLY		TRIM APPLICATION		FINISH THICKNESS		TRIM FINISH	
 <p>INR-BV ROUND flangeless INSET trim 4" ROUND trim plate w/ 1 3/4" aperture BEVELS from finished ceiling to 1/2" above</p>		<p>P PLASTER/SHEETROCK ceiling applications (1/2" minimum - 1 1/2" maximum sheetrock thick- ness).</p>		<p>1 For 5/32" thick drywall compound or plaster finishes</p>		<p>WH WHITE - Field paintable to match ceiling finish PN POLISHED NICKEL* SN SATIN NICKEL* OB OIL-RUBBED BRONZE* BK BLACK* *Specialty finish. Additional lead time required.</p>	
						<p>CL CLEAR LENS installed in trim plate* SF SOFT FOCUS LENS installed in trim plate* *UL Wet listed and IP54 Rated</p>	

TYPE **P1** – TRIM ASSEMBLY CROSS SECTION DETAIL – FOR $\frac{5}{32}$ " CEILING FINISH



- 1) **Housing**
- 2) **Frame** – May be installed before or after sheetrock.
- 3) **Sheetrock** – Accommodates all thickness from $\frac{1}{2}$ " to $1\frac{1}{2}$ ". Note: ceiling thicknesses less than 1" require additional $\frac{1}{2}$ " clearance above housing.
- 4) **Inset Mud Ring** (Type **P1** for $\frac{5}{32}$ " ceiling finish) – Sandwiches against ceiling material. Square inset mud ring may be rotated $\pm 5^\circ$ after sheetrock installation (prior to plastering).
- 5) **Ceiling Finish** (drywall compound or plaster) $\frac{5}{32}$ ".
- 6) **Trim Plate** – Features unique magnetic attachments. Bevels from finished ceiling to $\frac{1}{2}$ " above.
- 7) **Lens** (optional) – Factory installed into trim plate. UL WET LISTED and IP54 Rated for use in DRY, DAMP, or WET locations (covered ceiling applications only). Approved for use in residential steam applications. Not for use in commercial steam applications.

Note: Cross sections are for illustration purposes only. Refer to P-Series trim installation instructions for complete installation details.