

TRIM: **FLR-LG-W** - SEAMLESS SERIES™ / FLANGED ROUND

4" TRIM, 2 3/4" APERTURE FOR WOOD/STONE/ACOUSTIC TILE/SHEETROCK CEILING APPLICATIONS

Project Name	
Date	Type
Prepared By	
Comments	
Catalog # FLR - LG - W - /	



No. 8
eight
LIGHTING

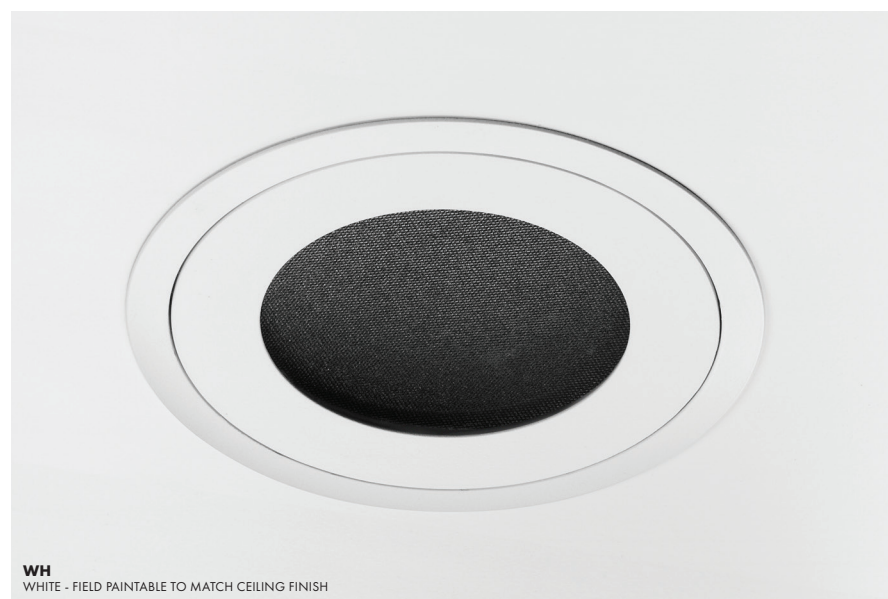
526 Portal Street
Cotati, CA 94931
USA
P 707.794.0888
F 707.795.4379
www.8lighting.com

All No. 8 Lighting 800 Series trims are UL/CSA listed and CE Certified. No. 8 Lighting trims and lamp modules are protected by one or more U.S. Patents. No. 8 Lighting reserves the right to change details of design, materials, and finish.

© 2022 No. 8 Lighting
Doc # 91317-13.0




PRODUCT FEATURES



Trim Assembly

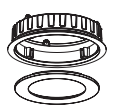
- **FLR-LG-W** flanged trim designed for wood, stone, acoustic tile, or sheetrock ceilings.
- 4" trim plate with minimal 2 3/4" aperture installs flush with the trim flange. Includes Solite soft focus lens standard. Also available without lens.
- Field adjustable to accommodate ceiling thicknesses between 1/2" - 1 1/2".
- Die-cast from Zinc alloy for maximum strength, stability, and corrosion resistance.
- Unique magnetic trim plate is removable without marring finishes.
- Works with all Number Eight **800 Series** housings.
- Available factory installed trim lens options are UL WET LISTED and IP54 Rated for use in DRY, DAMP, or WET locations (covered ceiling applications only). Approved for use in residential steam applications. Not for use in commercial steam applications.
- Available in many designer finishes including: **WH** - White (field paintable to match ceiling), **PN** - Polished Nickel, **SN** - Satin Nickel, **OB** - Oil-Rubbed Bronze, and **BK** - Black. Note: Lot variations in specialty finishes may occur. Ordering ALL trim kits at the same time is recommended.

Warranty

All No. 8 Lighting products are covered by a 5 year limited warranty. Products installed in residential steam applications are covered by a 2 year limited warranty. For specific warranty details and limitations, see 8lighting.com/resources-downloads.

PRODUCT SPECIFIER/PRODUCT ORDER NUMBER

FLR-LG	-	W	-		/	
TRIM ASSEMBLY	+	TRIM APPLICATION	+			LENS OPTIONS



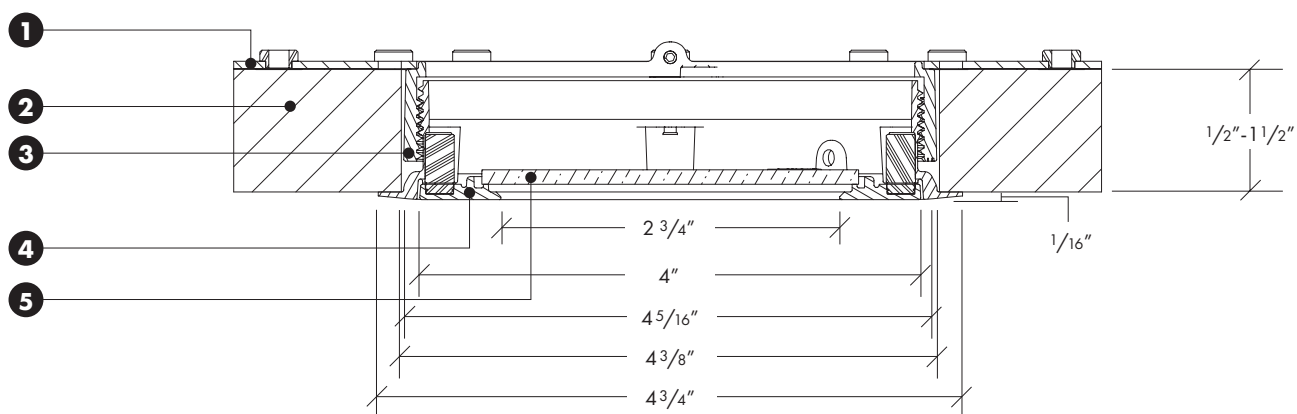
FLR-LG
4 3/4" ROUND flanged trim
4" ROUND trim plate w/
2 3/4" aperture installs flush
with trim
Solite soft focus lens
installed standard.

W
WOOD/STONE/
ACOUSTIC TILE/SHEET-
ROCK ceiling applications
(1/2" min - 1 1/2" max)

WH
WHITE - Field paintable to
match ceiling finish
PN
POLISHED NICKEL*
SN
SATIN NICKEL*
OB
OIL-RUBBED BRONZE*
BK
BLACK*
*Specialty finish.
Additional lead time
required.

NL
NO LENS installed in trim plate
CL
CLEAR LENS installed in trim plate*
WW
WALL WASH lens installed in trim
plate*
*UL Wet listed and IP54 Rated.

TRIM ASSEMBLY CROSS SECTION DETAIL



1) Housing

2) Wood/Stone/Acoustic Tile/Sheetrock Ceiling Material – Accommodates all thickness from $1/2''$ to $1 1/2''$.

3) Flanged Flush Trim Kit – $4 3/4''$ wide flanged trim overlaps $4 3/8''$ ceiling cut out. Height and rotation can be adjusted before or after ceiling installation.

4) Trim Plate – Features unique magnetic attachments.

5) Lens – Factory installed into trim plate. UL WET LISTED and IP54 Rated for use in DRY, DAMP, or WET locations (covered ceiling applications only). Approved for use in residential steam applications. Not for use in commercial steam applications.

Note: Cross sections are for illustration purposes only. Refer to W-Series trim installation instructions for complete installation details.