

# TRIM: **INS-LG-W** - SEAMLESS SERIES™ /SQUARE

4" TRIM, 1 3/4" APERTURE FOR WOOD/STONE CEILING APPLICATIONS

Project Name	
Date	Type
Prepared By	
Comments	
Catalog # <b>INS - LG - W -</b> /	



**No. 8**  
**eight**  
LIGHTING

526 Portal Street  
Cotati, CA 94931  
USA  
P 707.794.0888  
F 707.795.4379  
[www.8lighting.com](http://www.8lighting.com)

All No. 8 Lighting 800 Series trims are UL/CSA listed and CE Certified. No. 8 Lighting trims and lamp modules are protected by one or more U.S. Patents. No. 8 Lighting reserves the right to change details of design, materials, and finish.

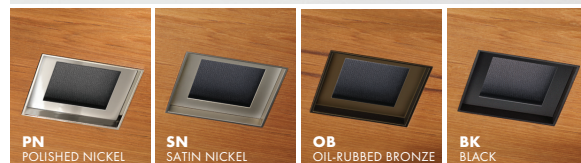
© 2022 No. 8 Lighting  
Doc # 91315-13.0




## PRODUCT FEATURES



**WH**  
WHITE - FIELD PAINTABLE TO MATCH CEILING FINISH



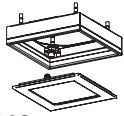
### Trim Assembly

- **INS-LG-W** trim recesses trim plate 1/2" above ceiling surface. Designed for wood/stone ceilings.
- 4" trim plate with minimal 2 3/4" aperture. Includes Solite soft focus lens standard. Also available without lens.
- Optimized for use with type **J2/J2S** and **K2S** lamp modules. Not recommended for use with **M2/M2S** lamp modules.
- Field adjustable to accommodate ceiling thicknesses between 1/2" - 1 1/2".
- Die-cast from Zinc alloy for maximum strength, stability, and corrosion resistance.
- Unique magnetic trim plate is removable without marring finishes.
- Can be installed before or after ceiling installation.
- Works with all Number Eight **800 Series** housings.
- Available factory installed trim lens options are UL WET LISTED and IP54 Rated for use in DRY, DAMP, or WET locations (covered ceiling applications only). Approved for use in residential steam applications. Not for use in commercial steam applications.
- Available in many designer finishes including: **WH** - White (Field paintable to match ceiling), **PN** - Polished Nickel, **SN** - Satin Nickel, **OB** - Oil-Rubbed Bronze, and **BK** - Black. Note: Lot variations in specialty finishes may occur. Ordering ALL trim kits at the same time is recommended.

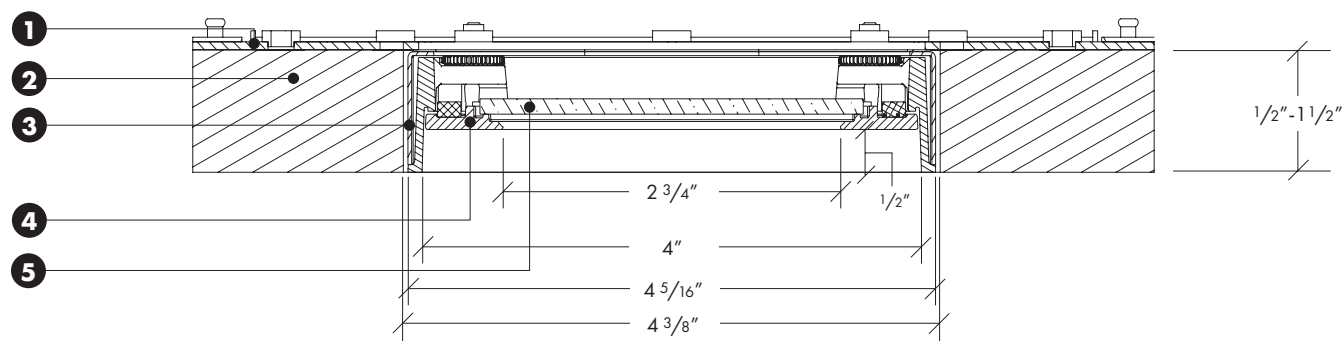
### Warranty

All No. 8 Lighting products are covered by a 5 year limited warranty. Products installed in residential steam applications are covered by a 2 year limited warranty. For specific warranty details and limitations, see [8lighting.com/resources-downloads](http://8lighting.com/resources-downloads).

## PRODUCT SPECIFIER/PRODUCT ORDER NUMBER

<b>INS-LG</b>	-	<b>W</b>	-		/	
TRIM ASSEMBLY	+	TRIM APPLICATION	+	TRIM FINISH	/	LENS OPTIONS
 <p><b>INS-LG</b> 4 5/16" SQUARE flangeless INSET trim  4" SQUARE trim plate w/ 2 3/4" aperture INSET 1/2" above finished ceiling  <b>Solite soft focus lens installed standard.</b></p>		<p><b>W</b> WOOD/STONE ceiling applications (1/2" min - 1 1/2" max)</p>		<p><b>WH</b> WHITE - Field paintable to match ceiling finish  <b>PN</b> POLISHED NICKEL*  <b>SN</b> SATIN NICKEL*  <b>OB</b> OIL-RUBBED BRONZE*  <b>BK</b> BLACK*  *Specialty finish. Additional lead time required.</p>		<p><b>NL</b> NO LENS installed in trim plate  <b>CL</b> CLEAR LENS installed in trim plate*  <b>WW</b> WALL WASH lens installed in trim plate*  *UL Wet listed and IP54 Rated.</p>

## TRIM ASSEMBLY CROSS SECTION DETAIL



**1) Housing**

**2) Wood/Stone Ceiling Material** – Accommodates all thickness from  $1/2''$  to  $1 1/2''$ .

**3) Inset Trim Kit** –  $4 5/16''$  wide trim installs flush within  $4 3/8''$  ceiling cut out. Height and rotation may be adjusted before or after ceiling installation. Features  $\pm 3^\circ$  rotational adjustment for squaring trim to other fixtures or nearby walls.

**4) Trim Plate** – Features unique magnetic attachments. Mounts  $1/2''$  above finished ceiling.

**5) Lens** – Factory installed into trim plate. UL WET LISTED and IP54 Rated for use in DRY, DAMP, or WET locations (covered ceiling applications only). Approved for use in residential steam applications. Not for use in commercial steam applications.

**Note:** Cross sections are for illustration purposes only. Refer to W-Series trim installation instructions for complete installation details.