

TRIM: **FS-LG-P** - SEAMLESS SERIES™/SQUARE

4" TRIM, 2 3/4" APERTURE FOR PLASTER/SHEETROCK CEILING APPLICATIONS

Project Name	
Date	Type
Prepared By	
Comments	
Catalog # FS - LG - P - - /	



No. 8
eight
LIGHTING

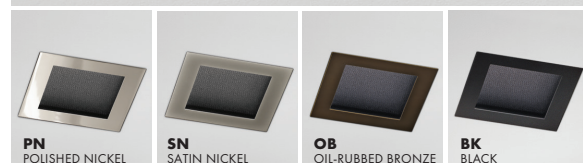
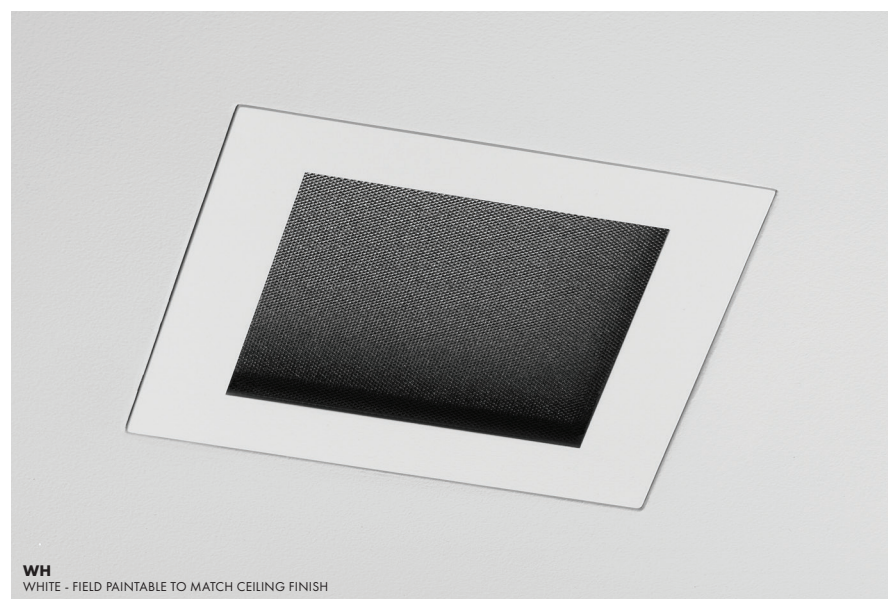
526 Portal Street
Cotati, CA 94931
USA
P 707.794.0888
F 707.795.4379
www.8lighting.com

All No. 8 Lighting 800 Series trims are UL/CSA listed and CE Certified. No. 8 Lighting trims and lamp modules are protected by one or more U.S. Patents. No. 8 Lighting reserves the right to change details of design, materials, and finish.

© 2022 No. 8 Lighting
Doc # 91310-13.0




PRODUCT FEATURES



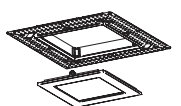
Trim Assembly

- **FS-LG-P** trim designed for flush installation into sheetrock ceilings with painted or integral color drywall compound/plaster finishes.
- 4" trim plate with minimal 2 3/4" aperture installs flush to finish ceiling. Includes Solite soft focus lens standard. Also available without lens.
- Available in two thicknesses to accommodate different ceiling finishing systems. Specify **P-1** for standard 5/32" thick finishes and **P-2** for 5/16" thick finishes.
- Field adjustable to accommodate sheetrock thicknesses between 1/2" - 1".
- Die-cast from Zinc alloy for maximum strength, stability, and corrosion resistance.
- Unique magnetic trim plate is removable without marring finishes.
- Works with all Number Eight **800 Series** housings.
- Available factory installed trim lens options are UL WET LISTED and IP54 Rated for use in DRY, DAMP, or WET locations (covered ceiling applications only). Approved for use in residential steam applications. Not for use in commercial steam applications.
- Available in many designer finishes including: **WH** - White (Field paintable to match ceiling), **PN** - Polished Nickel, **SN** - Satin Nickel, **OB** - Oil-Rubbed Bronze, and **BK** - Black. Note: Lot variations in specialty finishes may occur. Ordering ALL trim kits at the same time is recommended.

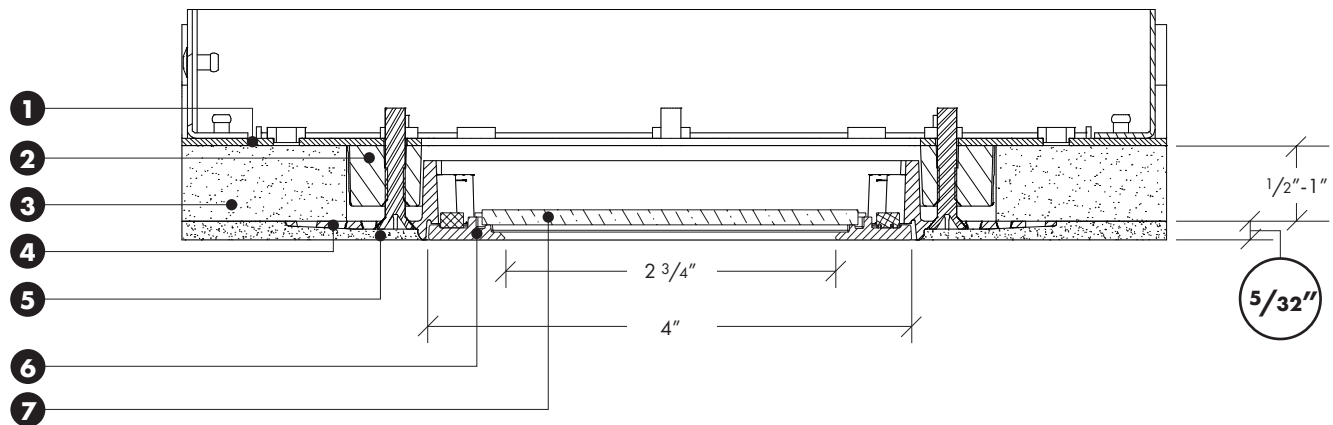
Warranty

All No. 8 Lighting products are covered by a 5 year limited warranty. Products installed in residential steam applications are covered by a 2 year limited warranty. For specific warranty details and limitations, see 8lighting.com/resources-downloads.

PRODUCT SPECIFIER/PRODUCT ORDER NUMBER

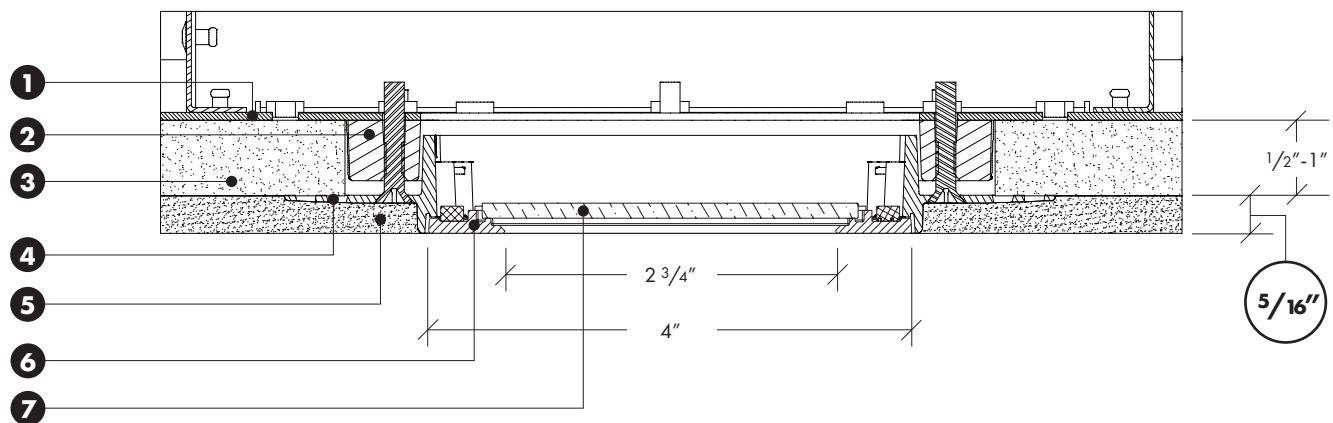
FS		P					
TRIM ASSEMBLY	+	TRIM APPLICATION	+	FINISH THICKNESS	+	TRIM FINISH	/ LENS OPTIONS
 <p>FS-LG SQUARE flangeless trim 4" SQUARE trim plate w/ 2 3/4" aperture installs flush with finished ceiling Solite soft focus lens installed standard.</p>		<p>P PLASTER/SHEETROCK ceiling applications (1/2" minimum - 1" maxi- mum sheetrock thickness).</p>		<p>1 For 5/32" thick drywall compound or plaster finishes</p> <p>2 For 5/16" thick drywall compound or plaster finishes</p>		<p>WH WHITE - Field paintable to match ceiling finish</p> <p>PN POLISHED NICKEL*</p> <p>SN SATIN NICKEL*</p> <p>OB OIL-RUBBED BRONZE*</p> <p>BK BLACK*</p> <p><small>*Specialty finish. Additional lead time required.</small></p>	<p>NL NO LENS installed in trim plate</p> <p>CL CLEAR LENS installed in trim plate*</p> <p>WW WALL WASH lens installed in trim plate*</p> <p><small>*UL Wet listed and IP54 Rated</small></p>

TYPE P1 – TRIM ASSEMBLY CROSS SECTION DETAIL – FOR 5/32" CEILING FINISH



- 1) **Housing**
- 2) **Frame** – May be installed before or after sheetrock. Square frame can be rotated 45° for diagonal appearance.
- 3) **Sheetrock** – Accommodates all thickness from 1/2" to 1".
- 4) **Flush Mud Ring (Type P1 for 5/32" ceiling finish)** – Sandwiches against ceiling material. Square flush mud ring may be rotated +/- 5° after sheetrock installation (prior to plastering).
- 5) **Ceiling Finish (drywall compound or plaster) 5/32"**.
- 6) **Trim Plate** – Features unique magnetic attachments. Mounts flush to finished ceiling.
- 7) **Lens** – Factory installed into trim plate. UL WET LISTED and IP54 Rated for use in DRY, DAMP, or WET locations (covered ceiling applications only). Approved for use in residential steam applications. Not for use in commercial steam applications.

TYPE P2 – TRIM ASSEMBLY CROSS SECTION DETAIL – FOR 5/16" CEILING FINISH



- 1) **Housing**
- 2) **Frame** – May be installed before or after sheetrock. Square frame can be rotated 45° for diagonal appearance.
- 3) **Sheetrock** – Accommodates all thickness from 1/2" to 1".
- 4) **Flush Mud Ring (Type P2 for 5/16" ceiling finish)** – Sandwiches against ceiling material. Square flush mud ring may be rotated +/- 5° after sheetrock installation (prior to plastering).
- 5) **Ceiling Finish (drywall compound or plaster) 5/16"**.
- 6) **Trim Plate** – Features unique magnetic attachments. Mounts flush to finished ceiling.
- 7) **Lens** – Factory installed into trim plate. UL WET LISTED and IP54 Rated for use in DRY, DAMP, or WET locations (covered ceiling applications only). Approved for use in residential steam applications. Not for use in commercial steam applications.

Note: Cross sections are for illustration purposes only. Refer to P-Series trim installation instructions for complete installation details.