

Photometric / Colorimetric / Electric Report

Fixture Model:

200-HD-WD-S-WD-60-DIM1-2-HD-WD_IC-WD-FLS-2-WW-20d

Trim Model:

FLS-2-WW-WH

Date:

5/11/2022



Light efficiency:

47 Lumen/Watt

Light quality:

CRI: 97.1

Color temperature:

3139 K

CIE 1931:

x: 0.425
y: 0.395

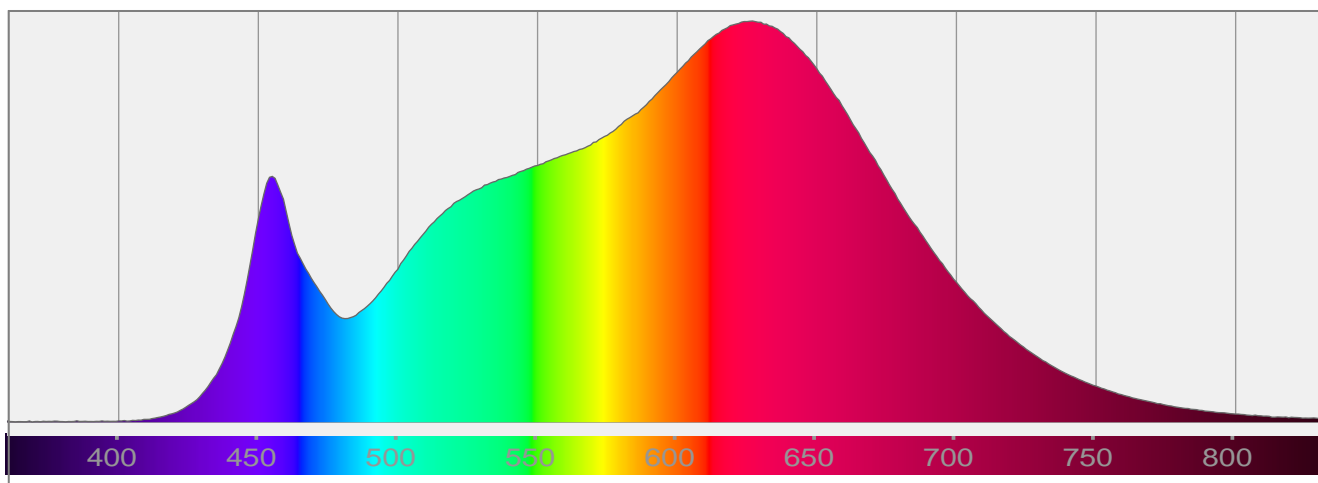
Output: 682 lm

Peak: 476 cd

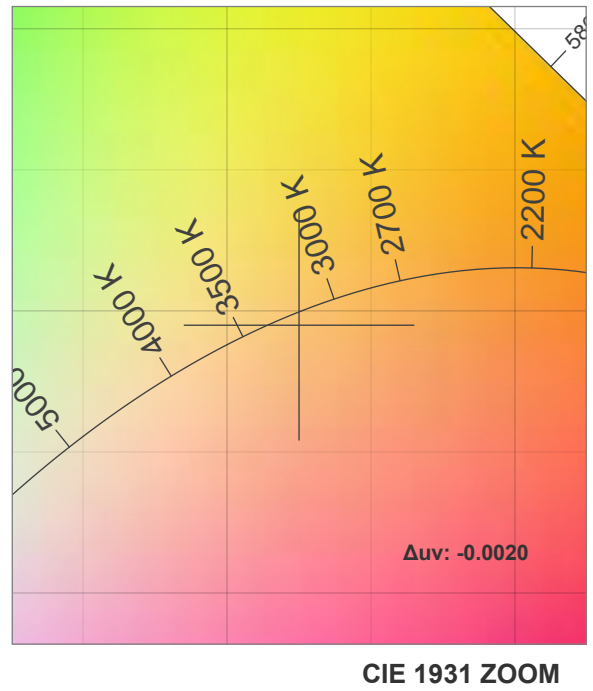
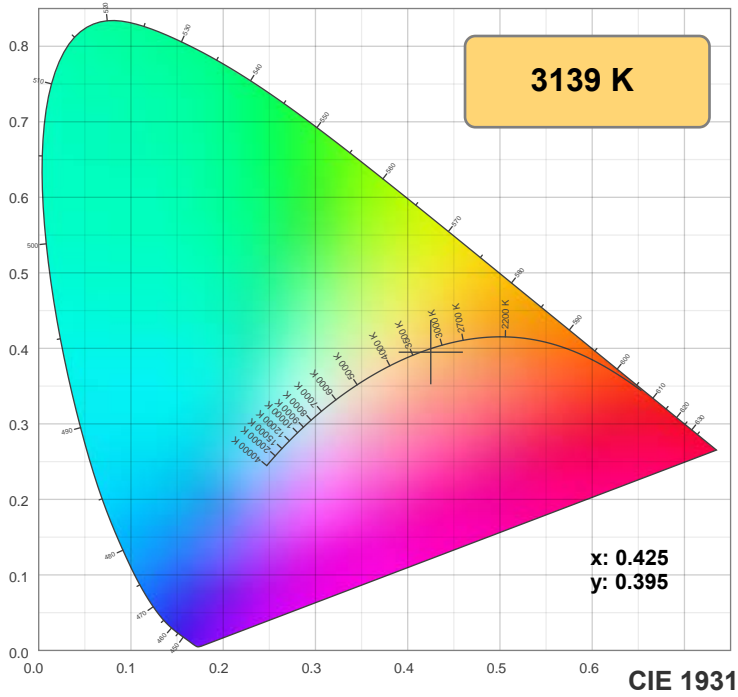
Power: 14.5 W

PF: 0.99

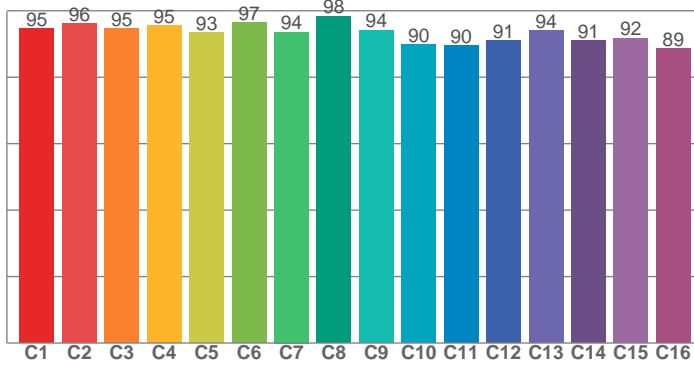
Spectra:



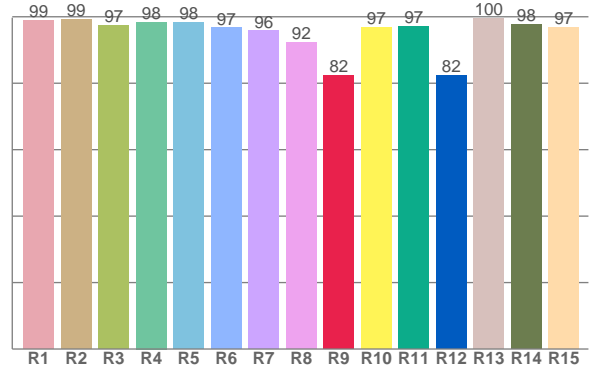
Color Details



TM-30: 93.4



CRI: 97.1 (R1-R8)



CRI R Values:

R1	R2	R3	R4	R5	R6	R7	R8	R9	R10	R11	R12	R13	R14	R15
98.9	99.2	97.5	98.4	98.2	96.6	95.7	92.3	82.4	96.8	97.2	82.3	99.6	97.6	96.8

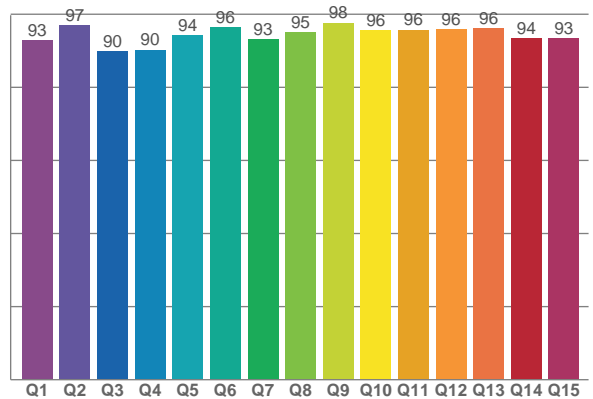
TM30 C Values:

C1	C2	C3	C4	C5	C6	C7	C8	C9	C10	C11	C12	C13	C14	C15	C16
94.6	96.1	94.6	95.5	93.4	96.5	93.6	98.4	94.2	89.8	89.5	91.1	94.0	91.0	91.8	88.6

CQS Q values:

Q1	Q2	Q3	Q4	Q5	Q6	Q7	Q8	Q9	Q10	Q11	Q12	Q13	Q14	Q15
92.9	96.9	89.9	90.3	94.2	96.4	93.3	95.0	97.7	95.5	95.8	96.0	96.1	93.5	93.3

CQS: 93.9



Color Parameters:

CCT	CRI	CRI R9	TM30 Rf	TM30 Rg	CQS	x	y	u	v	Δuv
3139 K	97.1	82.4	93.4	100.8	93.9	0.425	0.395	0.247	0.344	-0.0020

TM-30 Details

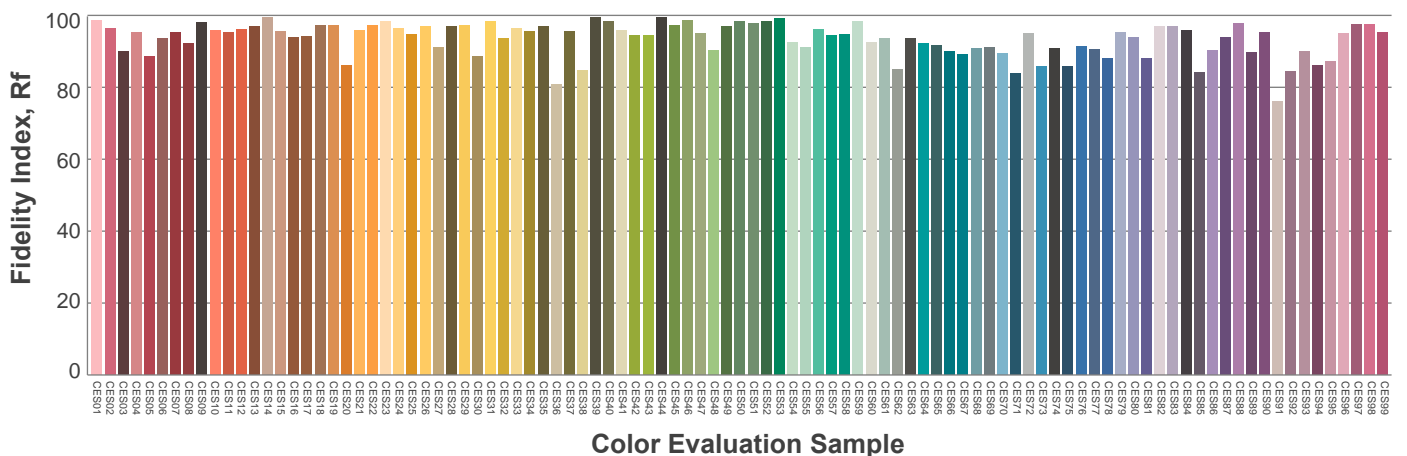
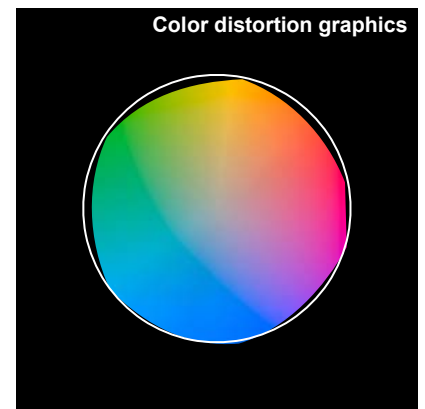
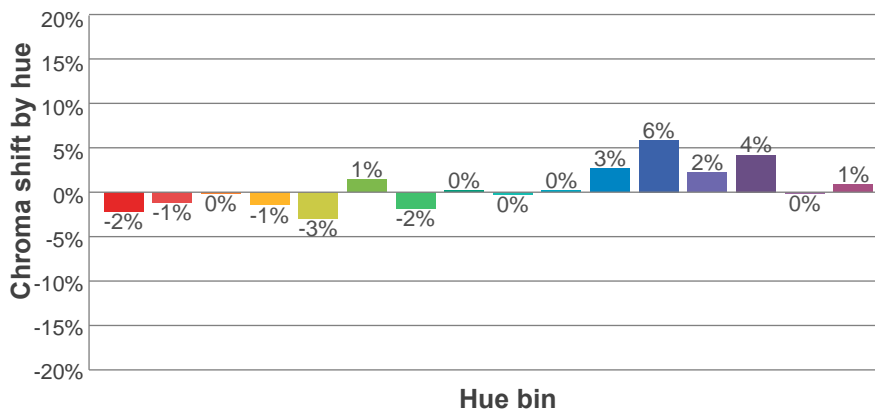
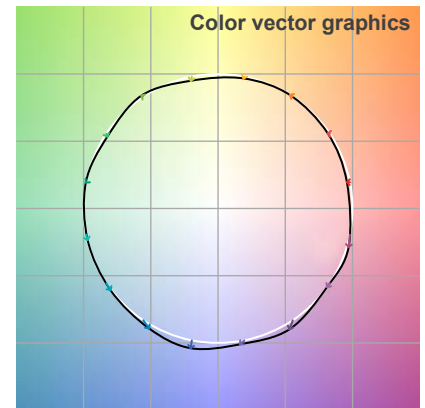
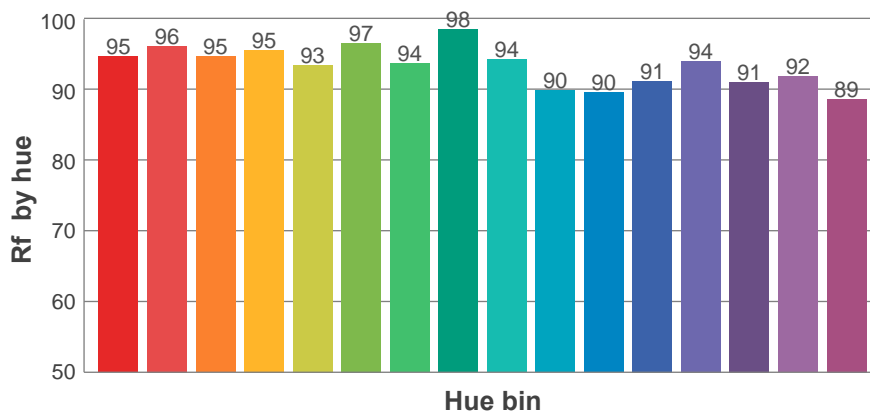
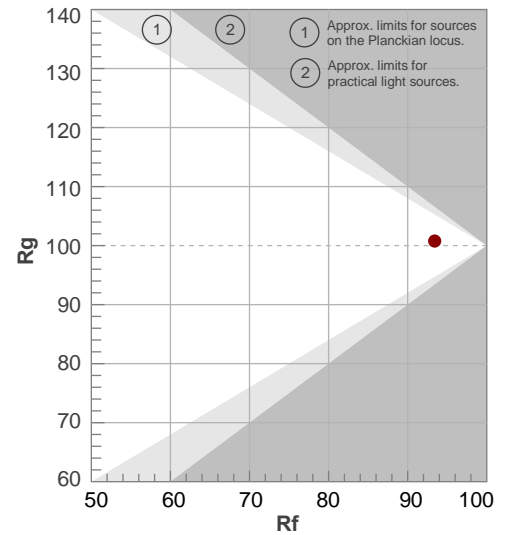
Rf 93.4

Fidelity index Rf

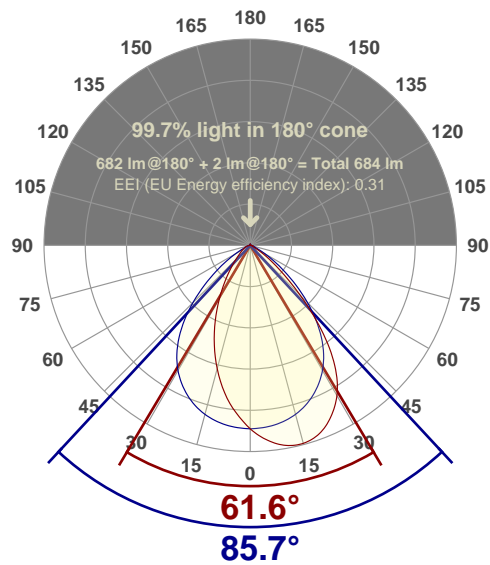
Rg 100.8

Gamut index Rg

Hue Bin	R _f	Shifts (%)	
		Chroma	Hue
1	95	-2%	1%
2	96	-1%	1%
3	95	0%	2%
4	95	-1%	0%
5	93	-3%	1%
6	97	1%	1%
7	94	-2%	1%
8	98	0%	0%
9	94	0%	4%
10	90	0%	6%
11	90	3%	7%
12	91	6%	0%
13	94	2%	-4%
14	91	4%	-6%
15	92	0%	-4%
16	89	1%	-9%



Angular Distribution Through 0° and 90° Planes



Beam Angle: 85.7°W x 61.6°L

Beam Details

