

Photometric / Colorimetric / Electric Report

Fixture Model:

200-HD-WD-S-WD-60-NFL-DIM1-2-HD-WD_IC-WD-FLS-2-BV

Trim Model:

FLS-2-BV-WH

Date:

2/17/2022



Light efficiency:

51 Lumen/Watt

Light quality:

CRI: 97.0

Color temperature:

3135 K

CIE 1931:

x: 0.426
y: 0.396

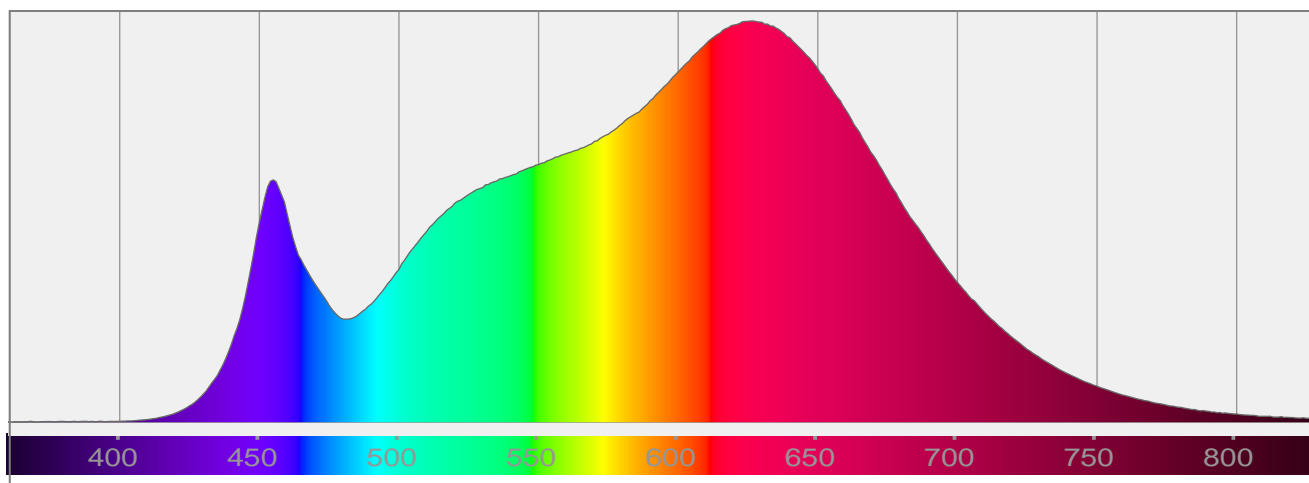
Output: 739 lm

Peak: 776 cd

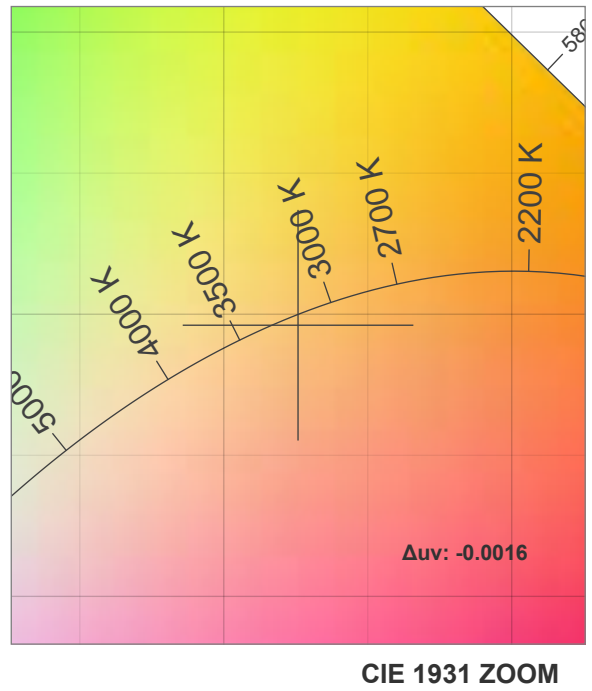
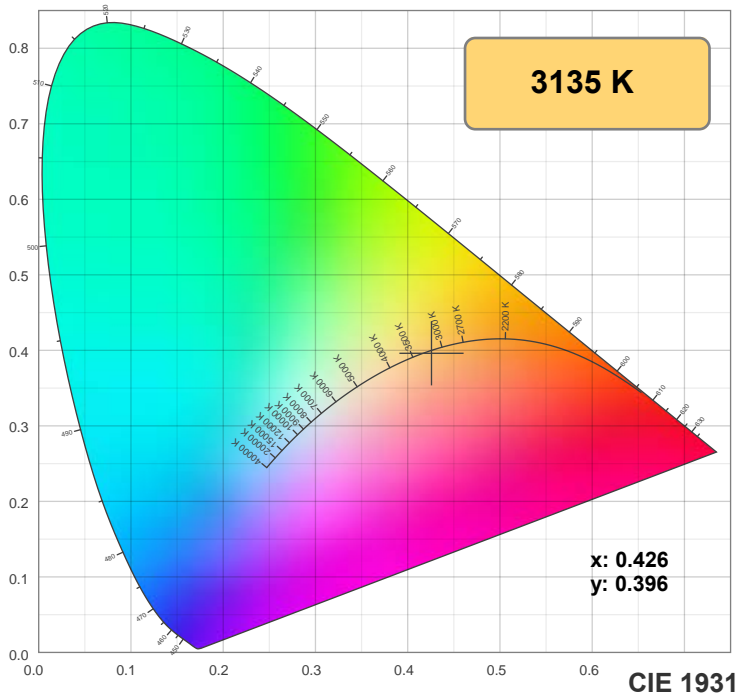
Power: 14.5 W

PF: 1.0

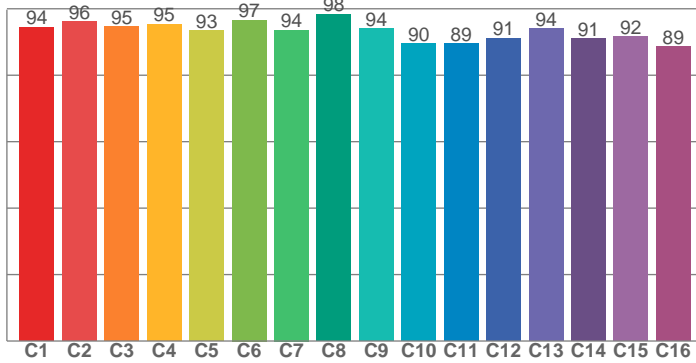
Spectra:



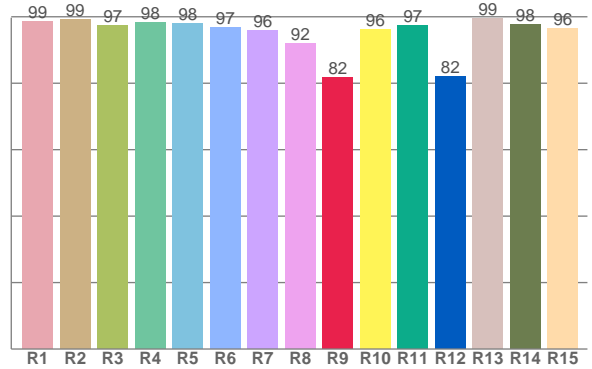
Color Details



TM-30: 93.4



CRI: 97.0 (R1-R8)



CRI R Values:

R1	R2	R3	R4	R5	R6	R7	R8	R9	R10	R11	R12	R13	R14	R15
98.7	99.1	97.3	98.3	97.9	96.8	95.8	92.0	81.6	96.2	97.4	82.0	99.4	97.6	96.4

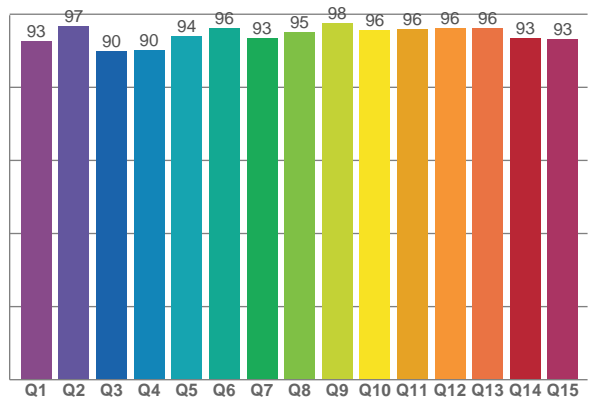
TM30 C Values:

C1	C2	C3	C4	C5	C6	C7	C8	C9	C10	C11	C12	C13	C14	C15	C16
94.5	96.0	94.6	95.4	93.4	96.6	93.6	98.4	94.0	89.6	89.4	91.2	94.0	91.0	91.7	88.6

CQS Q values:

Q1	Q2	Q3	Q4	Q5	Q6	Q7	Q8	Q9	Q10	Q11	Q12	Q13	Q14	Q15
92.7	96.8	89.9	90.2	94.1	96.2	93.4	95.1	97.6	95.5	95.8	96.1	96.2	93.4	93.2

CQS: 93.9



Color Parameters:

CCT	CRI	CRI R9	TM30 Rf	TM30 Rg	CQS	x	y	u	v	Δuv
3135 K	97.0	81.6	93.4	100.6	93.9	0.426	0.396	0.247	0.344	-0.0016

TM-30 Details

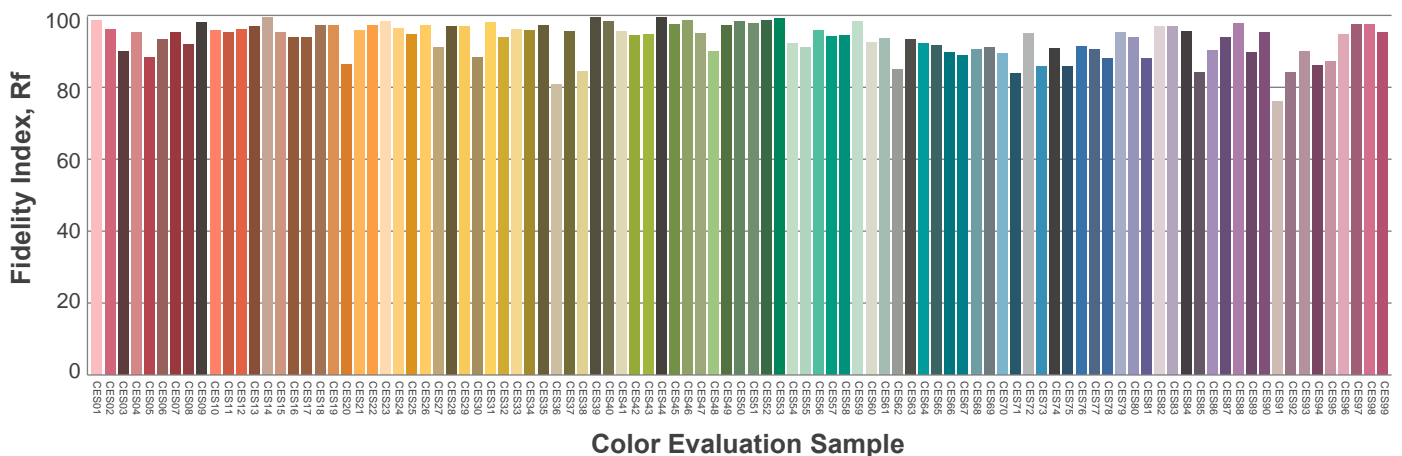
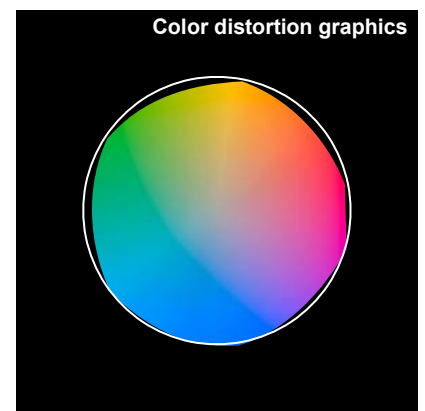
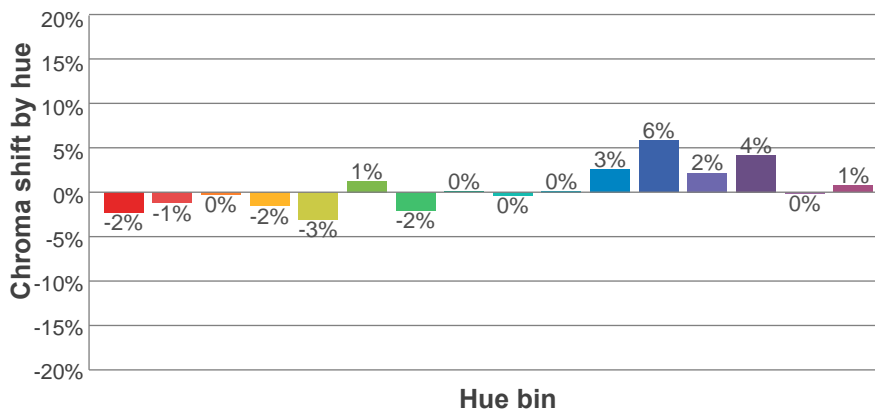
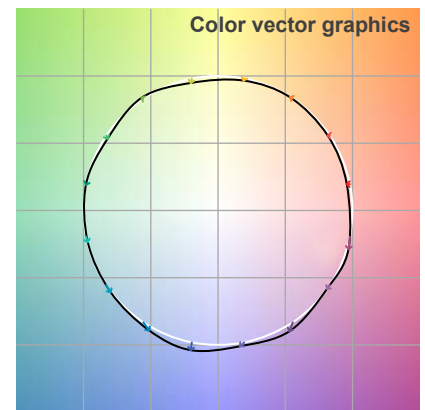
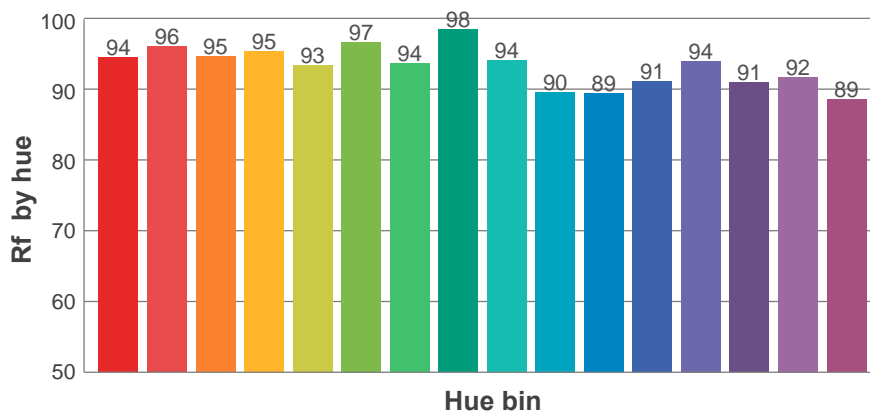
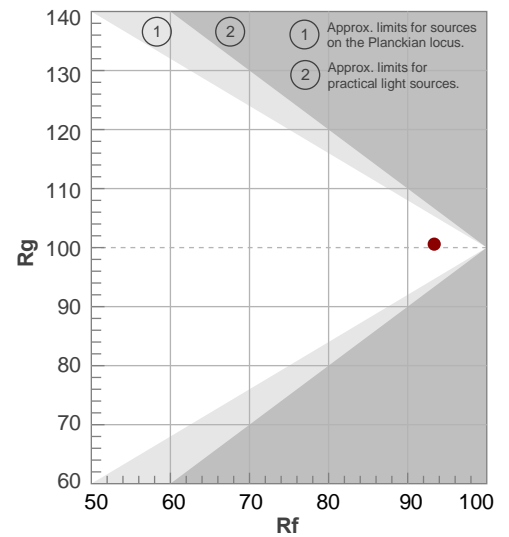
Rf 93.4

Fidelity index Rf

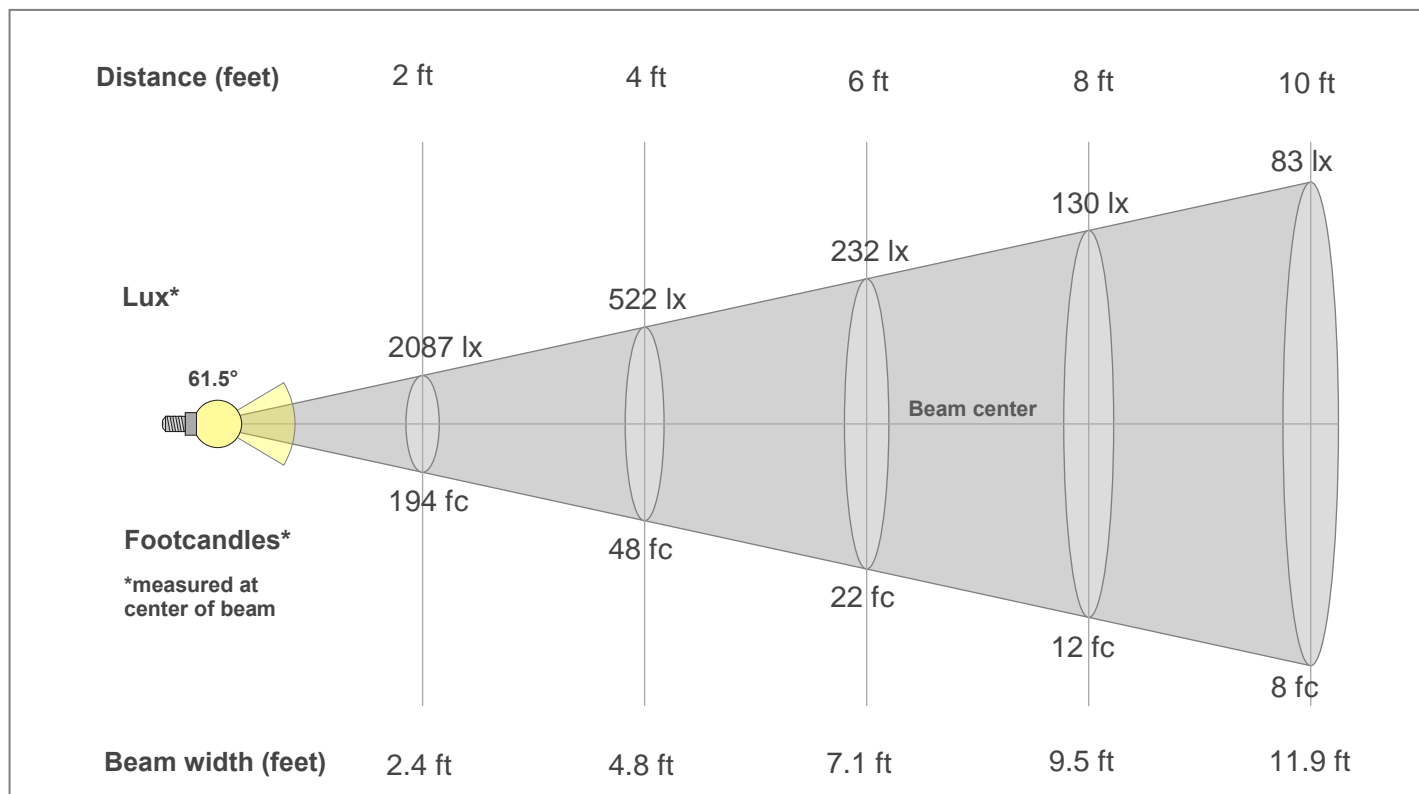
Rg 100.6

Gamut index Rg

Hue Bin	R _f	Shifts (%)	
		Chroma	Hue
1	94	-2%	1%
2	96	-1%	1%
3	95	0%	2%
4	95	-2%	0%
5	93	-3%	1%
6	97	1%	1%
7	94	-2%	1%
8	98	0%	0%
9	94	0%	4%
10	90	0%	6%
11	89	3%	7%
12	91	6%	0%
13	94	2%	-4%
14	91	4%	-6%
15	92	0%	-4%
16	89	1%	-9%



Beam Details



Beam Intensities from 1-20m

1m	2m	3m	4m	5m	6m	7m	8m	9m	10m	11m	12m	13m	14m	15m	16m	17m	18m	19m	20m
3.3ft	6.6ft	9.8ft	13.1ft	16.4ft	19.7ft	23ft	26.2ft	29.5ft	32.8ft	36.1ft	39.4ft	42.7ft	45.9ft	49.2ft	52.5ft	55.8ft	59.1ft	62.3ft	65.6ft
775lx	194lx	86lx	48lx	31lx	22lx	16lx	12lx	10lx	8lx	6lx	5lx	5lx	4lx	3lx	3lx	3lx	2lx	2lx	2lx
72fc	18fc	8fc	4.5fc	2.9fc	2fc	1.5fc	1.1fc	0.9fc	0.7fc	0.6fc	0.5fc	0.4fc	0.4fc	0.3fc	0.3fc	0.2fc	0.2fc	0.2fc	0.2fc

Intensities in 0° c-plane

0°	2°	4°	6°	8°	10°	12°	14°	16°	18°	20°	22°	24°	26°	28°	30°	32°	34°	36°	38°
775	776	773	767	758	747	731	712	689	661	627	587	544	499	453	406	358	300	236	171
100%	100%	100%	99%	98%	96%	94%	92%	89%	85%	81%	76%	70%	64%	58%	52%	46%	39%	30%	22%

Intensities in 90° c-plane

0°	2°	4°	6°	8°	10°	12°	14°	16°	18°	20°	22°	24°	26°	28°	30°	32°	34°	36°	38°
775	776	773	767	758	747	731	712	689	661	627	587	544	499	453	406	358	300	236	171
100%	100%	100%	99%	98%	96%	94%	92%	89%	85%	81%	76%	70%	64%	58%	52%	46%	39%	30%	22%

Intensities in 180° c-plane

0°	2°	4°	6°	8°	10°	12°	14°	16°	18°	20°	22°	24°	26°	28°	30°	32°	34°	36°	38°
775	776	773	767	758	747	731	712	689	661	627	587	544	499	453	406	358	300	236	171
100%	100%	100%	99%	98%	96%	94%	92%	89%	85%	81%	76%	70%	64%	58%	52%	46%	39%	30%	22%

Intensities in 270° c-plane

0°	2°	4°	6°	8°	10°	12°	14°	16°	18°	20°	22°	24°	26°	28°	30°	32°	34°	36°	38°
775	776	773	767	758	747	731	712	689	661	627	587	544	499	453	406	358	300	236	171
100%	100%	100%	99%	98%	96%	94%	92%	89%	85%	81%	76%	70%	64%	58%	52%	46%	39%	30%	22%

Beam angle 50%	Field angle 10%	Cut-off angle 2.5%	Intensity ratio in 120°	Intensity ratio in 90°
61.5°	85.4°	102°	98.2%	94.6%