

## Photometric / Colorimetric / Electric Report

Fixture Model:

200-HD-WD-S-WD-60-NFL-DIM1-2-HD-WD\_IC-WD-FLS-2

Trim Model:

FLS-2-WH

Date:

2/17/2022



Light efficiency:

30 Lumen/Watt

Light quality:

CRI: 96.9

Color temperature:

3116 K

CIE 1931:

x: 0.427  
y: 0.397

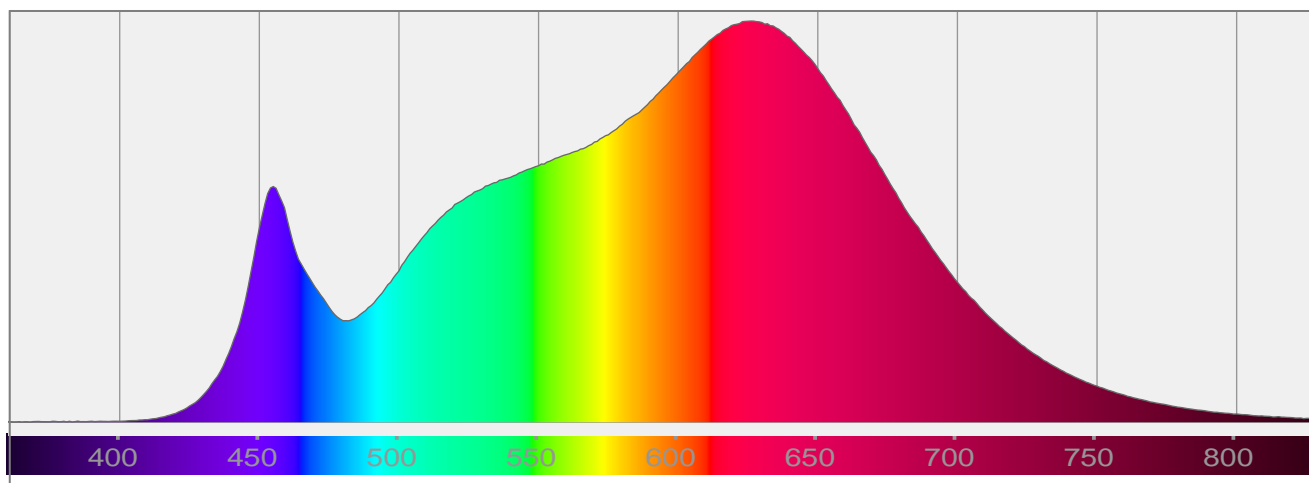
Output: 442 lm

Peak: 759 cd

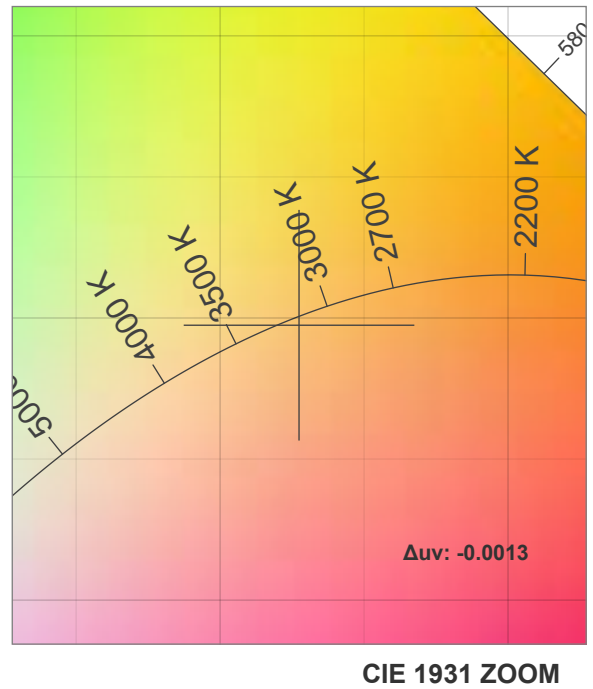
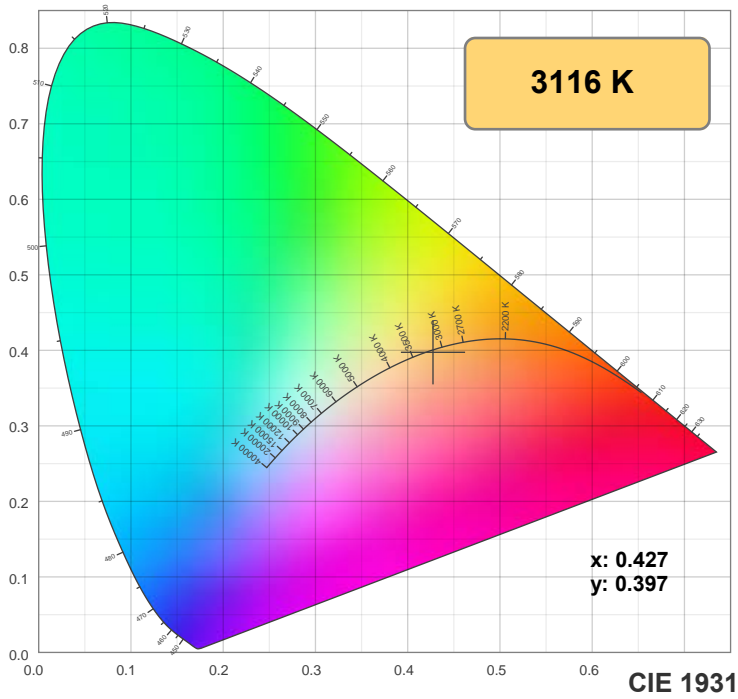
Power: 14.5 W

PF: 0.99

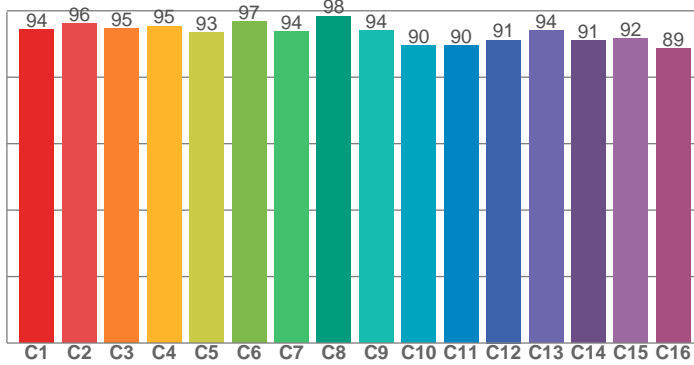
Spectra:



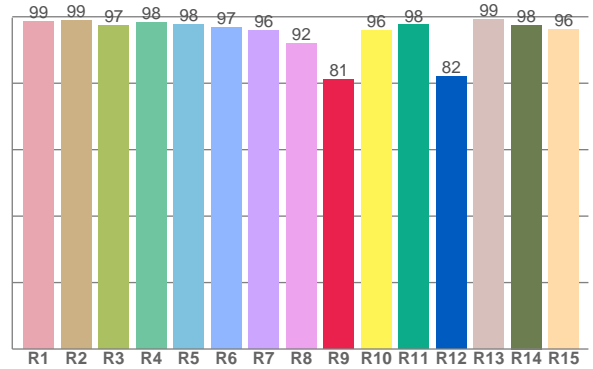
## Color Details



**TM-30: 93.4**



**CRI: 96.9 (R1-R8)**



**CRI R Values:**

R1	R2	R3	R4	R5	R6	R7	R8	R9	R10	R11	R12	R13	R14	R15
98.6	99.0	97.3	98.3	97.8	96.9	95.8	91.8	81.1	95.9	97.5	82.0	99.2	97.5	96.1

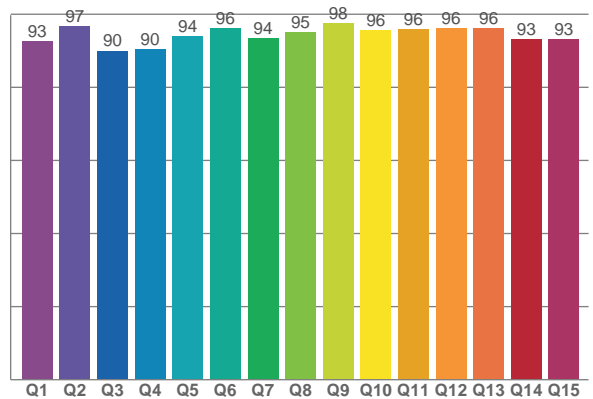
**TM30 C Values:**

C1	C2	C3	C4	C5	C6	C7	C8	C9	C10	C11	C12	C13	C14	C15	C16
94.4	96.0	94.7	95.4	93.4	96.7	93.6	98.4	94.0	89.6	89.5	91.2	93.9	91.0	91.7	88.6

**CQS Q values:**

Q1	Q2	Q3	Q4	Q5	Q6	Q7	Q8	Q9	Q10	Q11	Q12	Q13	Q14	Q15
92.6	96.7	90.0	90.3	94.0	96.2	93.5	95.2	97.6	95.6	95.9	96.2	96.3	93.3	93.1

**CQS: 93.9**



**Color Parameters:**

CCT	CRI	CRI R9	TM30 Rf	TM30 Rg	CQS	x	y	u	v	Δuv
3116 K	96.9	81.1	93.4	100.5	93.9	0.427	0.397	0.247	0.345	-0.0013

# TM-30 Details

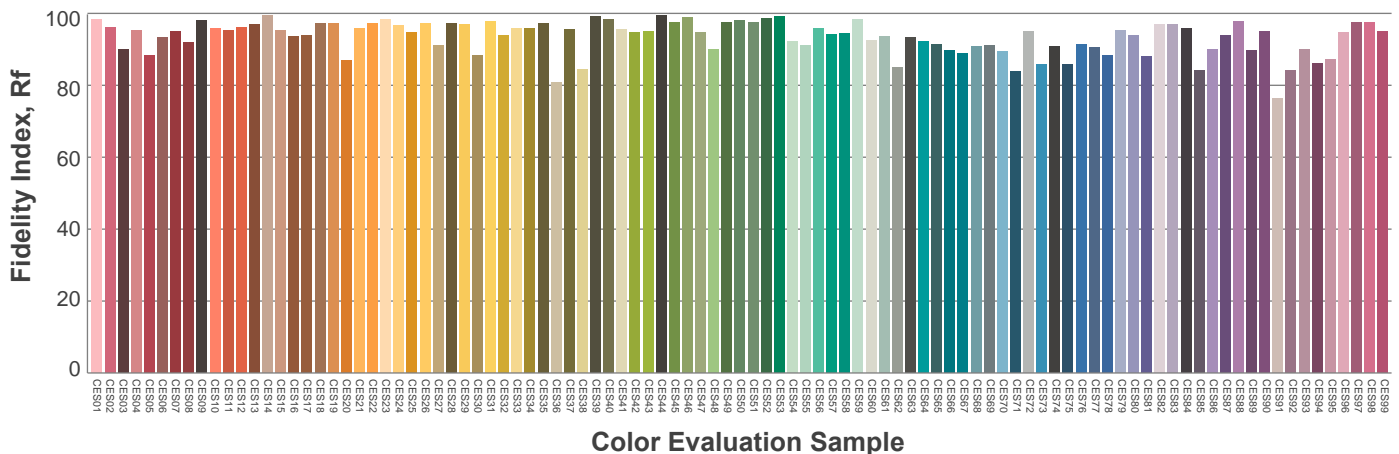
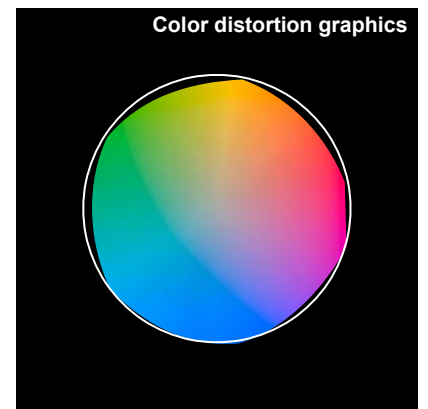
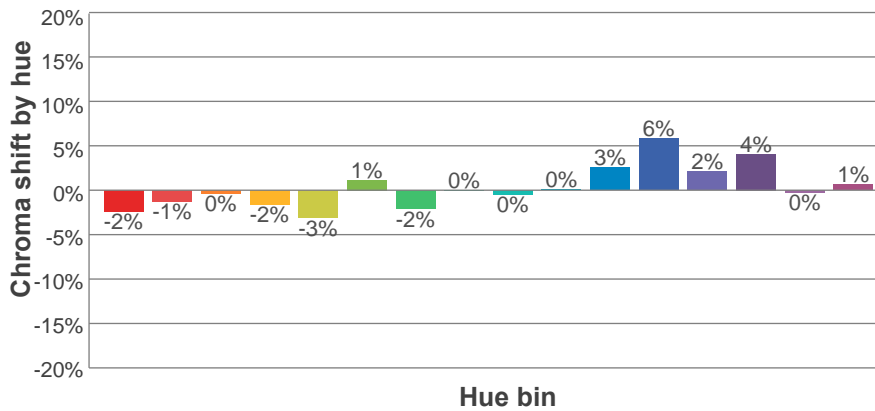
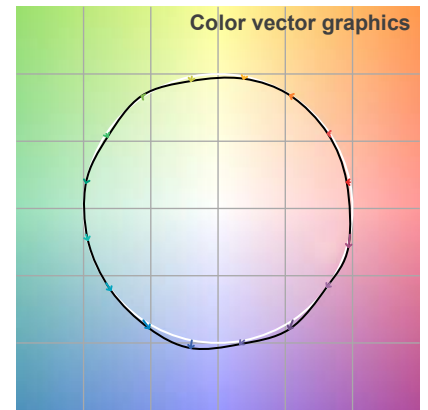
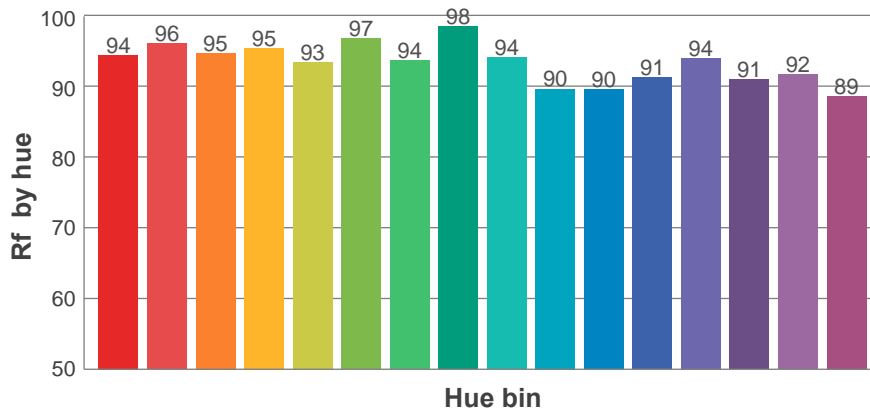
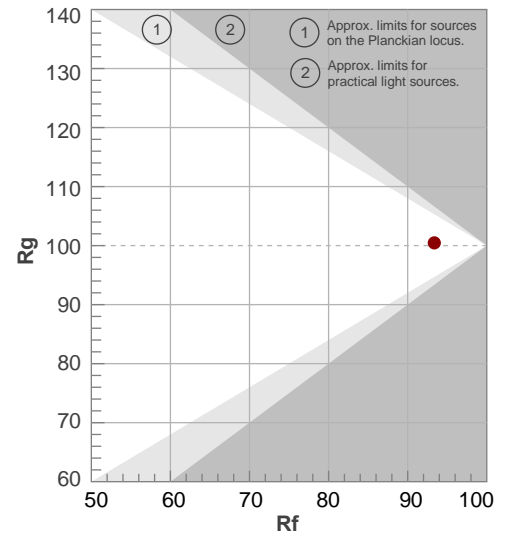
**Rf 93.4**

Fidelity index Rf

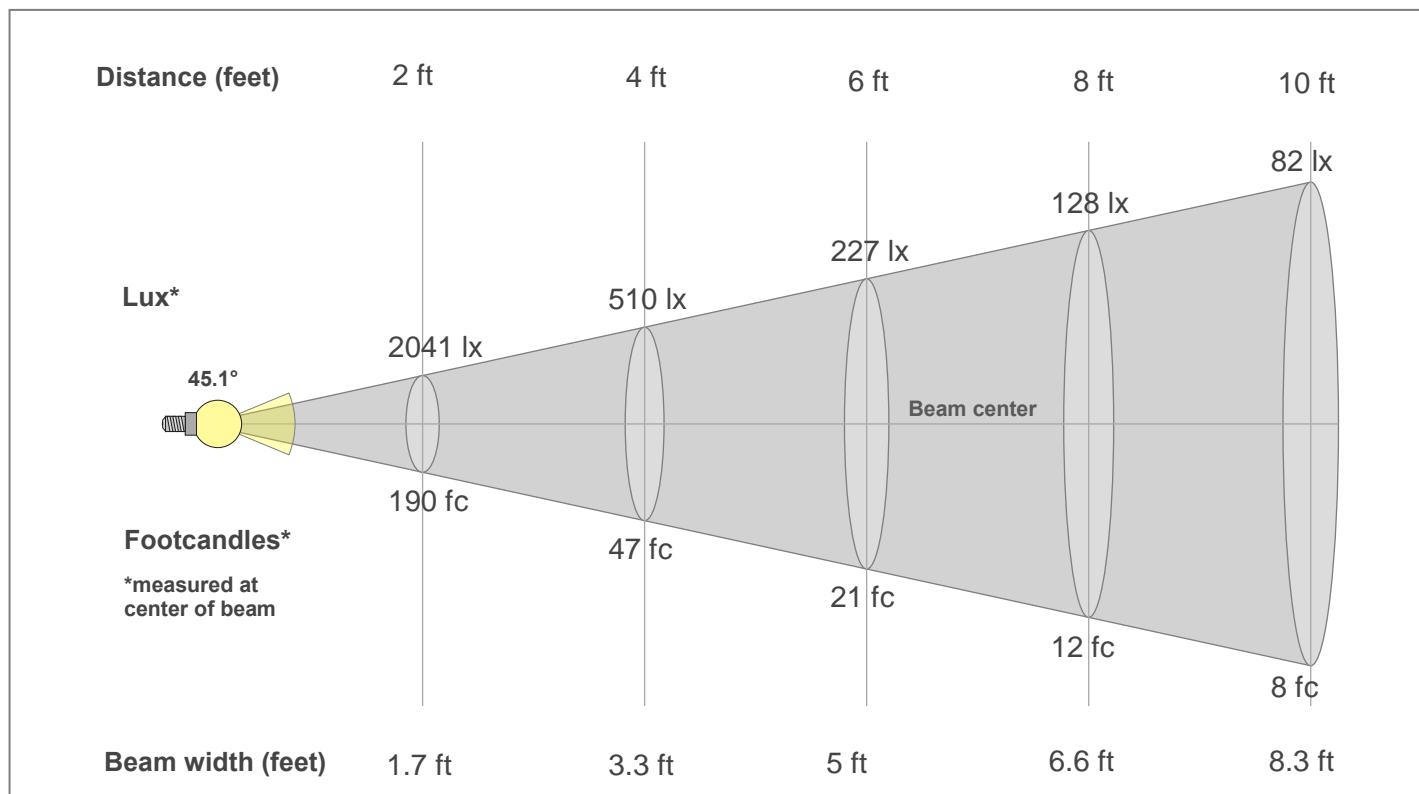
**Rg 100.5**

Gamut index Rg

Hue Bin	R <sub>f</sub>	Shifts (%)	
		Chroma	Hue
1	94	-2%	1%
2	96	-1%	1%
3	95	0%	2%
4	95	-2%	0%
5	93	-3%	1%
6	97	1%	1%
7	94	-2%	1%
8	98	0%	0%
9	94	0%	4%
10	90	0%	6%
11	90	3%	7%
12	91	6%	0%
13	94	2%	-4%
14	91	4%	-6%
15	92	0%	-4%
16	89	1%	-9%



## Beam Details



### Beam Intensities from 1-20m

1m	2m	3m	4m	5m	6m	7m	8m	9m	10m	11m	12m	13m	14m	15m	16m	17m	18m	19m	20m
3.3ft	6.6ft	9.8ft	13.1ft	16.4ft	19.7ft	23ft	26.2ft	29.5ft	32.8ft	36.1ft	39.4ft	42.7ft	45.9ft	49.2ft	52.5ft	55.8ft	59.1ft	62.3ft	65.6ft
758lx	190lx	84lx	47lx	30lx	21lx	15lx	12lx	9lx	8lx	6lx	5lx	4lx	4lx	3lx	3lx	3lx	2lx	2lx	2lx
70.5fc	17.6fc	7.8fc	4.4fc	2.8fc	2fc	1.4fc	1.1fc	0.9fc	0.7fc	0.6fc	0.5fc	0.4fc	0.4fc	0.3fc	0.3fc	0.2fc	0.2fc	0.2fc	0.2fc

### Intensities in 0° c-plane

0°	2°	4°	6°	8°	10°	12°	14°	16°	18°	20°	22°	24°	26°	28°	30°	32°	34°	36°	38°
758	759	754	744	728	709	686	657	618	562	490	403	315	241	192	161	137	114	86	51
100%	100%	99%	98%	96%	93%	91%	87%	81%	74%	65%	53%	41%	32%	25%	21%	18%	15%	11%	7%

### Intensities in 90° c-plane

0°	2°	4°	6°	8°	10°	12°	14°	16°	18°	20°	22°	24°	26°	28°	30°	32°	34°	36°	38°
758	759	754	744	728	709	686	657	618	562	490	403	315	241	192	161	137	114	86	51
100%	100%	99%	98%	96%	93%	91%	87%	81%	74%	65%	53%	41%	32%	25%	21%	18%	15%	11%	7%

### Intensities in 180° c-plane

0°	2°	4°	6°	8°	10°	12°	14°	16°	18°	20°	22°	24°	26°	28°	30°	32°	34°	36°	38°
758	759	754	744	728	709	686	657	618	562	490	403	315	241	192	161	137	114	86	51
100%	100%	99%	98%	96%	93%	91%	87%	81%	74%	65%	53%	41%	32%	25%	21%	18%	15%	11%	7%

### Intensities in 270° c-plane

0°	2°	4°	6°	8°	10°	12°	14°	16°	18°	20°	22°	24°	26°	28°	30°	32°	34°	36°	38°
758	759	754	744	728	709	686	657	618	562	490	403	315	241	192	161	137	114	86	51
100%	100%	99%	98%	96%	93%	91%	87%	81%	74%	65%	53%	41%	32%	25%	21%	18%	15%	11%	7%

Beam angle 50%	Field angle 10%	Cut-off angle 2.5%	Intensity ratio in 120°	Intensity ratio in 90°
45.1°	73.2°	81.6°	99.3%	99.1%