

## Photometric / Colorimetric / Electric Report

Fixture Model:

200-HD-WD-R-WD-40-DIM1-2-HD-WD\_IC-WD-FLR-  
2-WW-20d

Trim Model:

FLR-2-WW-WH

Date:

5/24/2022



Light efficiency:

46 Lumen/Watt

Light quality:

CRI: 97.1

Color temperature:

3132 K

CIE 1931:

x: 0.425  
y: 0.395

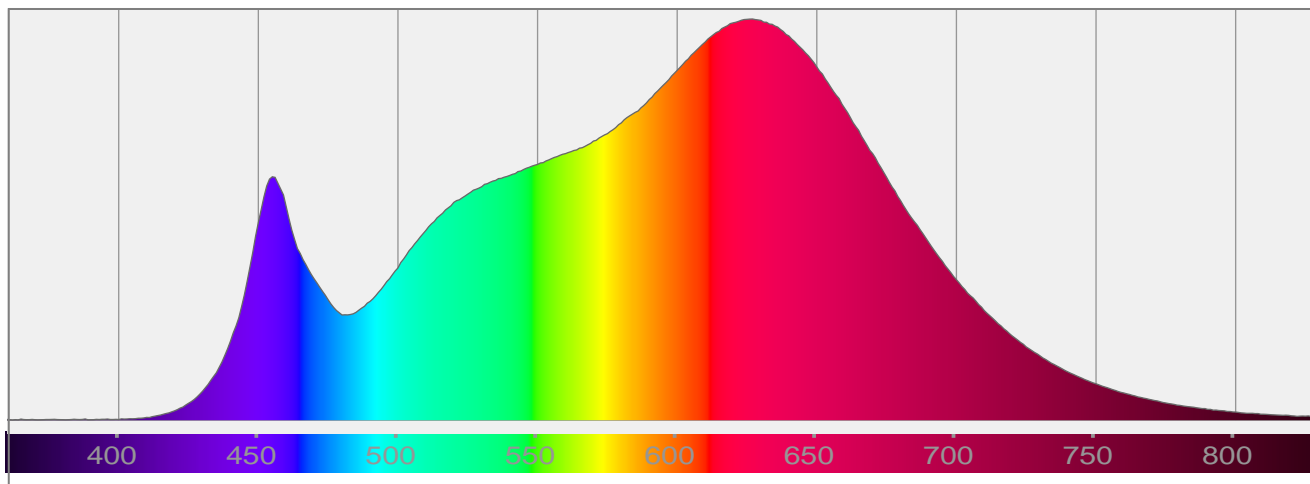
Output: 661 lm

Peak: 651 cd

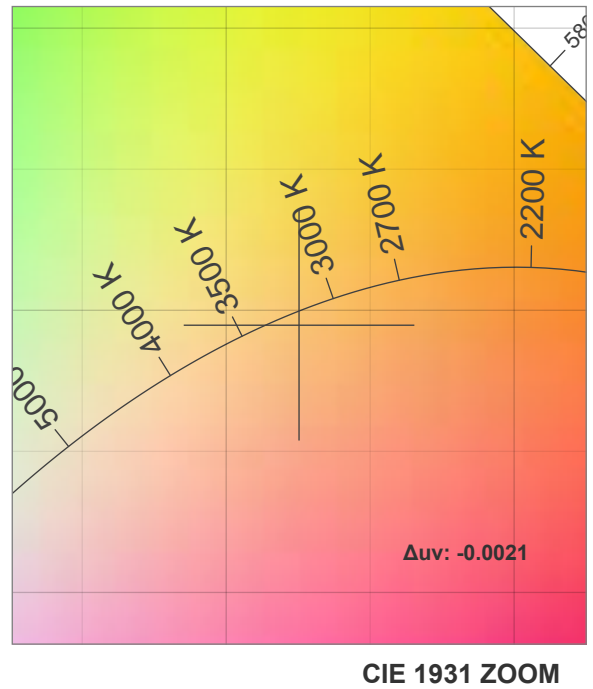
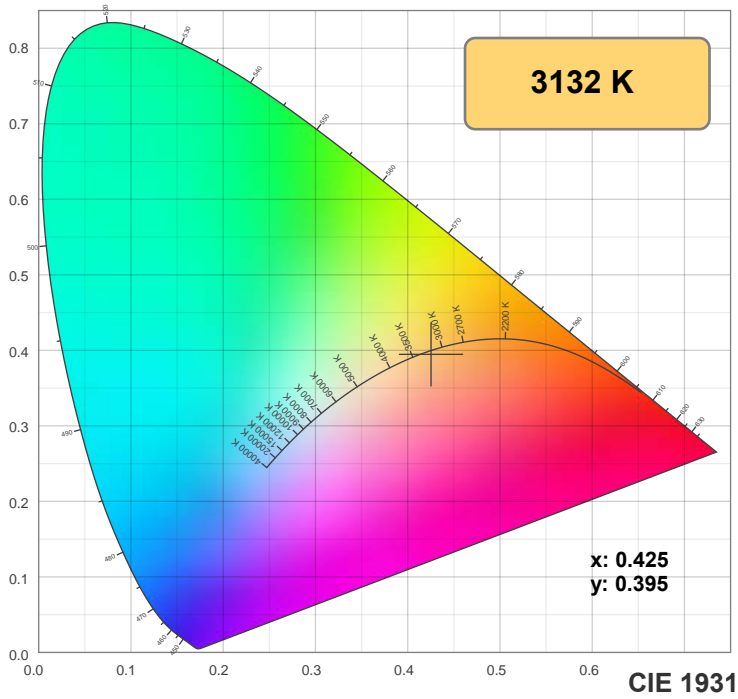
Power: 14.5 W

PF: 1.0

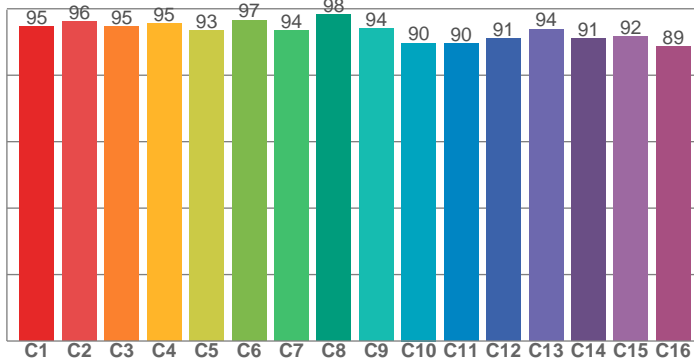
Spectra:



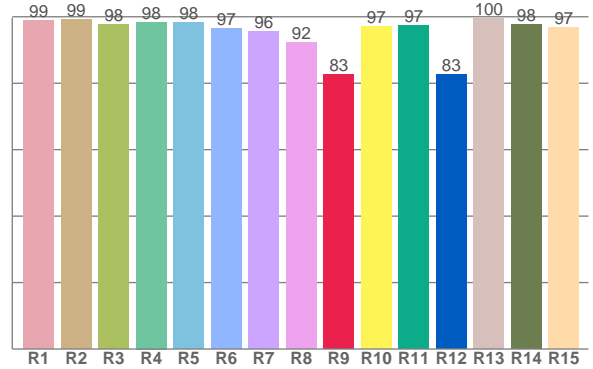
## Color Details



**TM-30: 93.4**



**CRI: 97.1 (R1-R8)**



**CRI R Values:**

R1	R2	R3	R4	R5	R6	R7	R8	R9	R10	R11	R12	R13	R14	R15
98.9	99.2	97.7	98.4	98.2	96.6	95.6	92.2	82.5	97.1	97.3	82.5	99.6	97.7	96.9

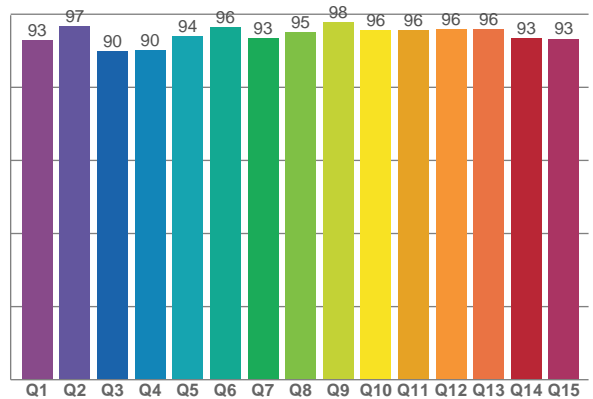
**TM30 C Values:**

C1	C2	C3	C4	C5	C6	C7	C8	C9	C10	C11	C12	C13	C14	C15	C16
94.5	96.1	94.7	95.4	93.4	96.6	93.5	98.4	94.0	89.7	89.6	91.1	93.9	91.0	91.7	88.7

**CQS Q values:**

Q1	Q2	Q3	Q4	Q5	Q6	Q7	Q8	Q9	Q10	Q11	Q12	Q13	Q14	Q15
92.8	96.8	90.0	90.3	94.1	96.5	93.3	95.0	97.7	95.6	95.7	95.9	96.0	93.5	93.3

**CQS: 93.9**



**Color Parameters:**

CCT	CRI	CRI R9	TM30 Rf	TM30 Rg	CQS	x	y	u	v	Δuv
3132 K	97.1	82.5	93.4	100.7	93.9	0.425	0.395	0.247	0.344	-0.0021

## TM-30 Details

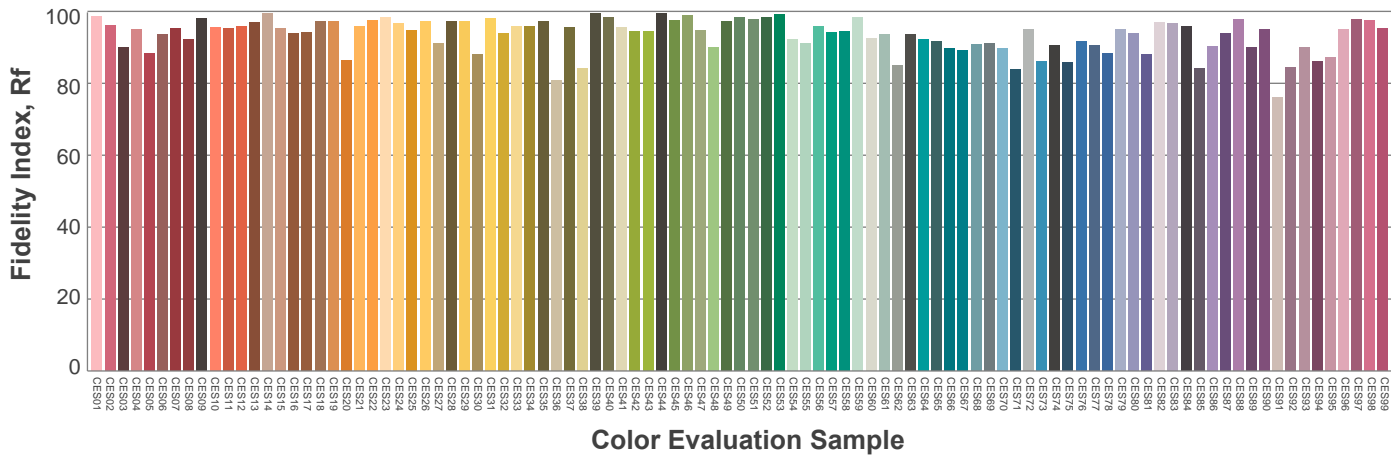
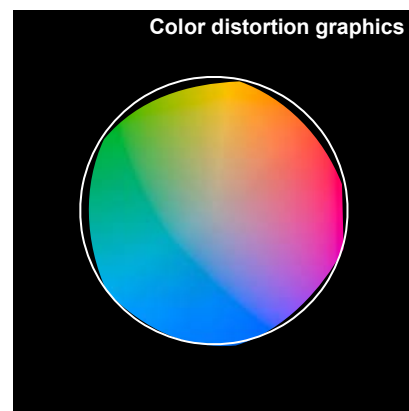
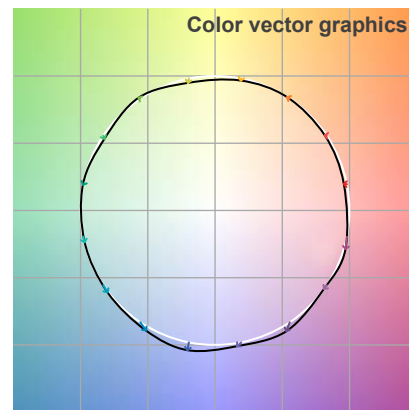
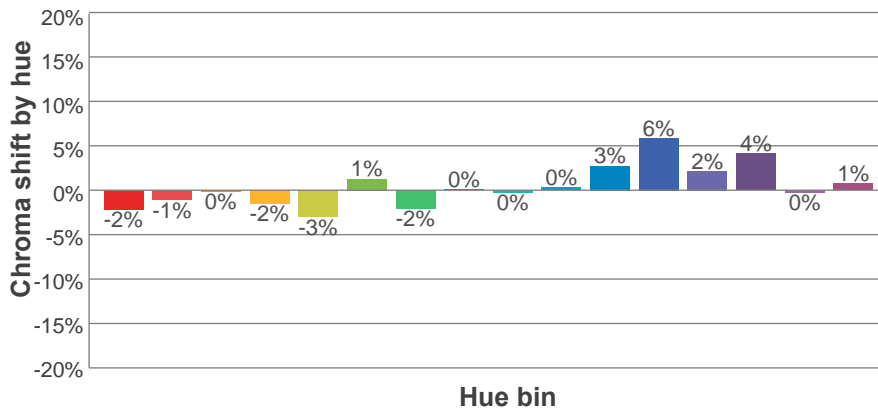
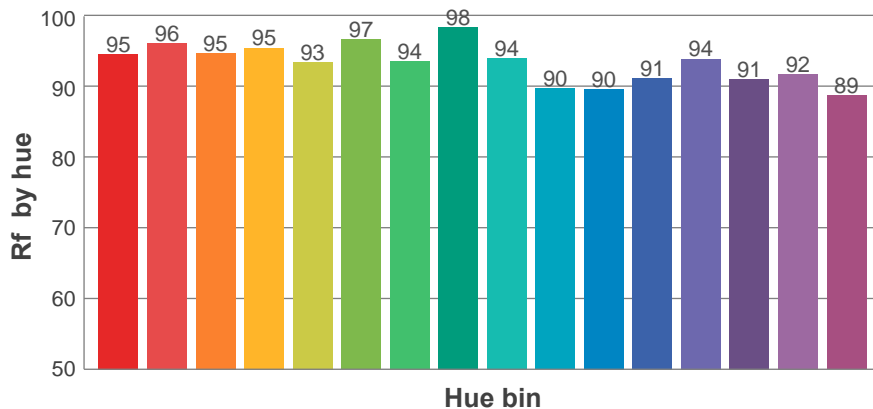
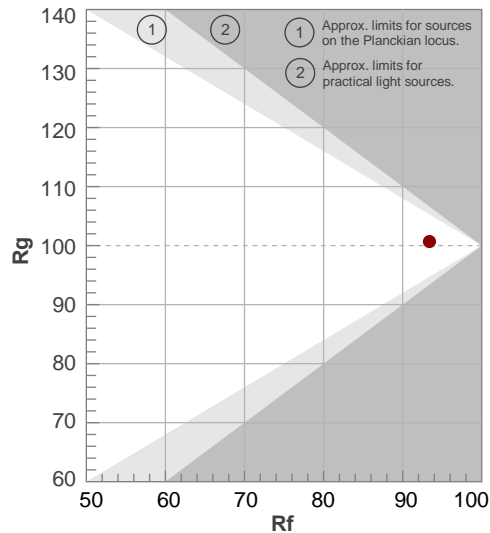
## Rf 93.4

### Fidelity index $R_f$

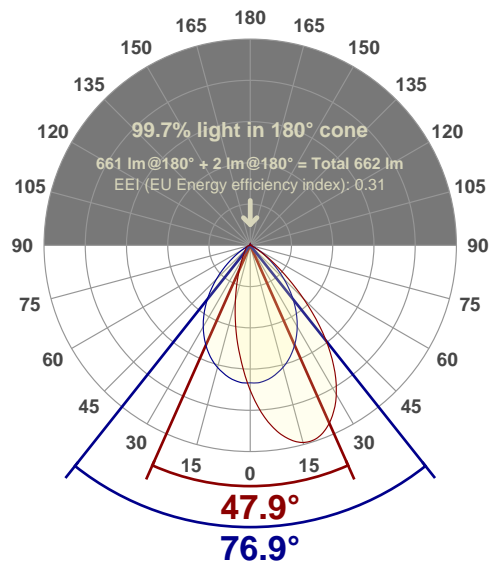
**Rg 100.7**

## Gamut index Rg

		Shifts (%)	
Hue Bin	$R_f$	Chroma	Hue
1	95	-2%	1%
2	96	-1%	1%
3	95	0%	2%
4	95	-2%	0%
5	93	-3%	1%
6	97	1%	1%
7	94	-2%	1%
8	98	0%	0%
9	94	0%	4%
10	90	0%	6%
11	90	3%	7%
12	91	6%	0%
13	94	2%	-4%
14	91	4%	-6%
15	92	0%	-4%
16	89	1%	-9%



## Angular Distribution Through 0° and 90° Planes



**Beam Angle: 76.9°W x 47.9°L**

## Beam Details

