

Photometric / Colorimetric / Electric Report

Fixture Model:

200-HD-WD-R-WD-25-NFL-DIM1-2-HD-WD_IC-WD-
FLR-2-BV-30d

Trim Model:

FLR-2-BV-WH

Date:

8/22/2022



Light efficiency:

35 Lumen/Watt

Light quality:

CRI: 97.1

Color temperature:

3112 K

CIE 1931:

x: 0.426
y: 0.394

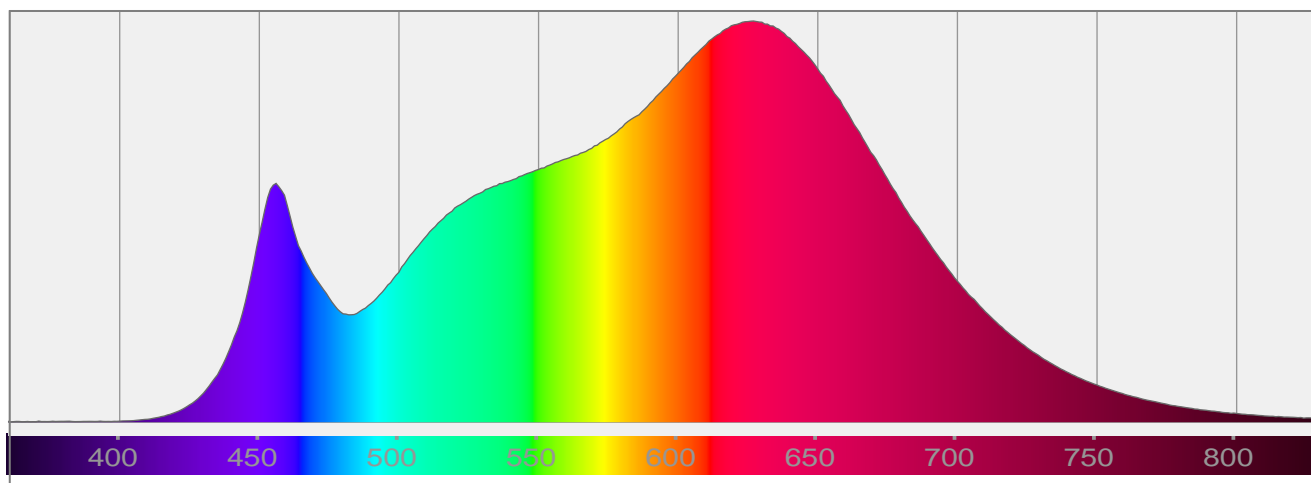
Output: 512 lm

Peak: 1235 cd

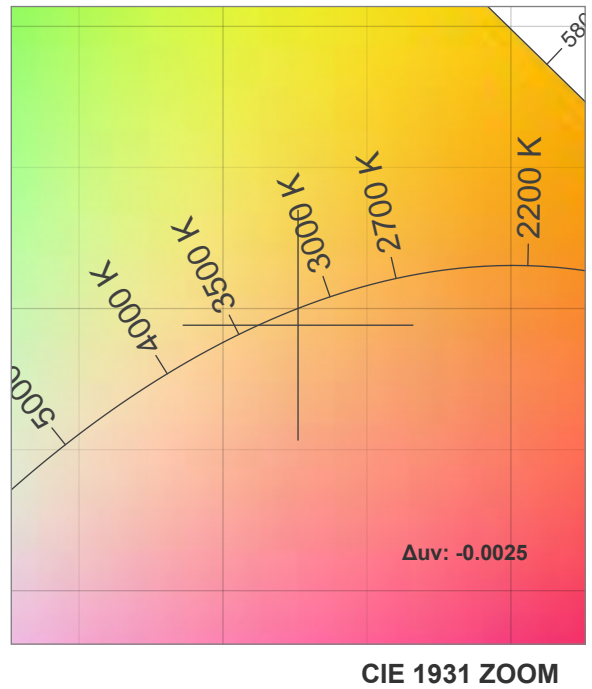
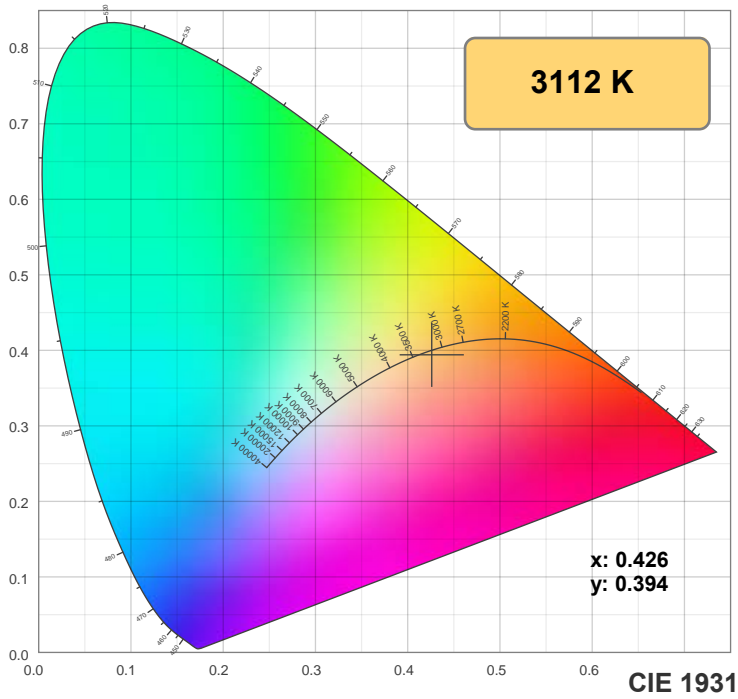
Power: 14.5 W

PF: 1.0

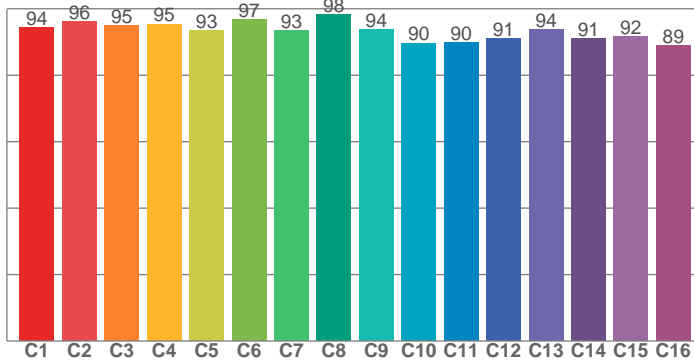
Spectra:



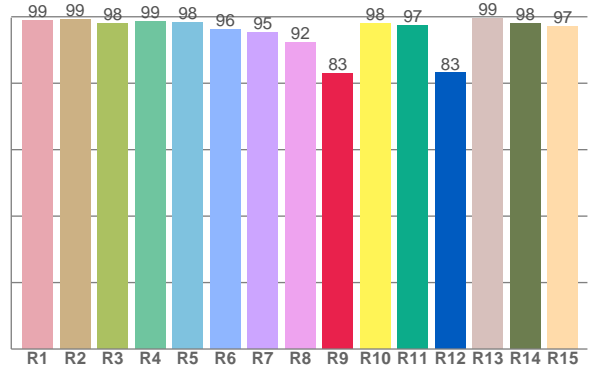
Color Details



TM-30: 93.4



CRI: 97.1 (R1-R8)



CRI R Values:

R1	R2	R3	R4	R5	R6	R7	R8	R9	R10	R11	R12	R13	R14	R15
99.0	99.2	98.1	98.6	98.4	96.3	95.3	92.2	83.1	98.0	97.4	83.1	99.4	98.0	97.2

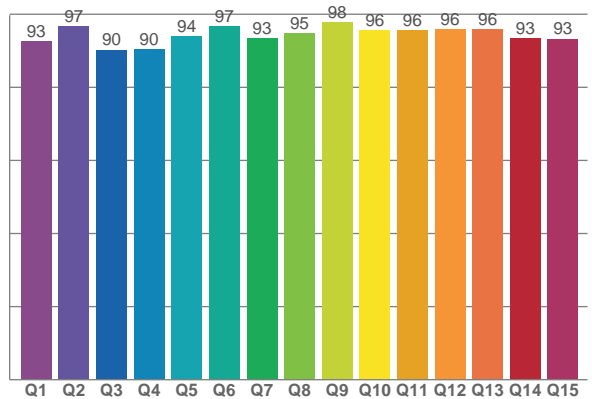
TM30 C Values:

C1	C2	C3	C4	C5	C6	C7	C8	C9	C10	C11	C12	C13	C14	C15	C16
94.5	96.1	94.9	95.4	93.5	96.6	93.5	98.3	93.7	89.7	89.9	91.1	93.7	91.0	91.6	88.8

CQS Q values:

Q1	Q2	Q3	Q4	Q5	Q6	Q7	Q8	Q9	Q10	Q11	Q12	Q13	Q14	Q15
92.7	96.6	90.3	90.4	94.0	96.7	93.4	94.9	97.9	95.7	95.7	95.8	95.8	93.5	93.3

CQS: 93.9



Color Parameters:

CCT	CRI	CRI R9	TM30 Rf	TM30 Rg	CQS	x	y	u	v	Δuv
3112 K	97.1	83.1	93.4	100.6	93.9	0.426	0.394	0.248	0.344	-0.0025

TM-30 Details

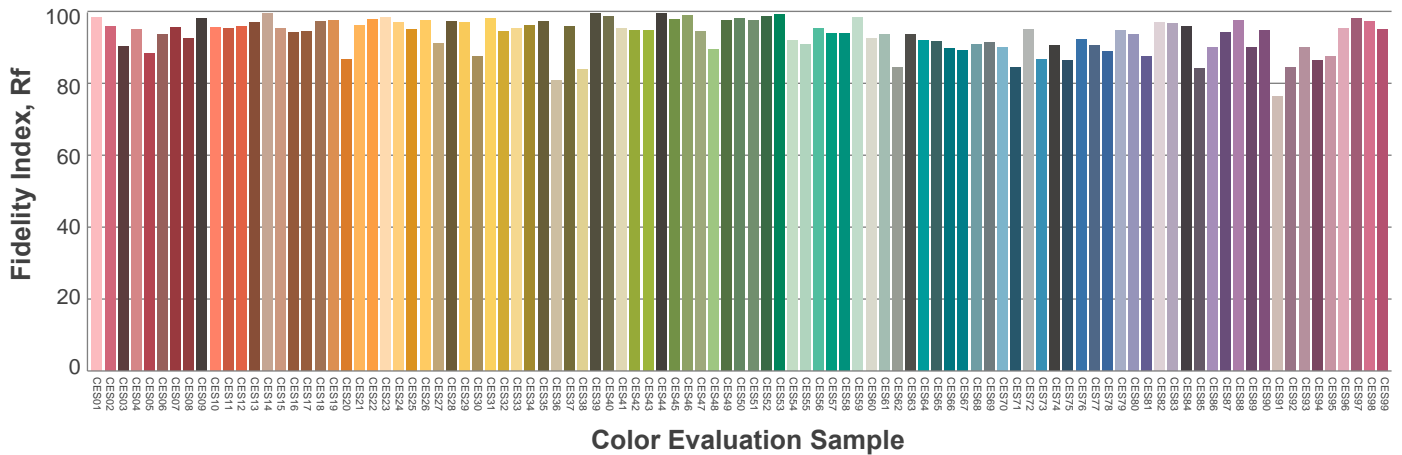
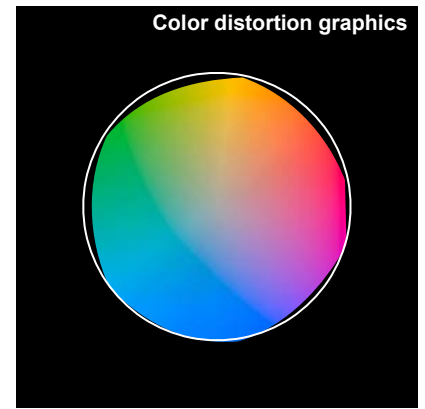
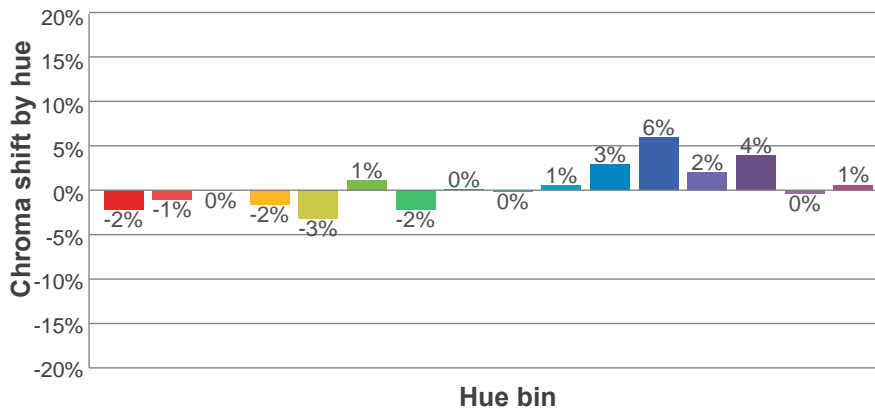
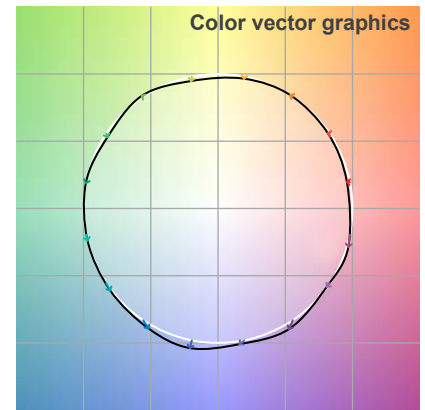
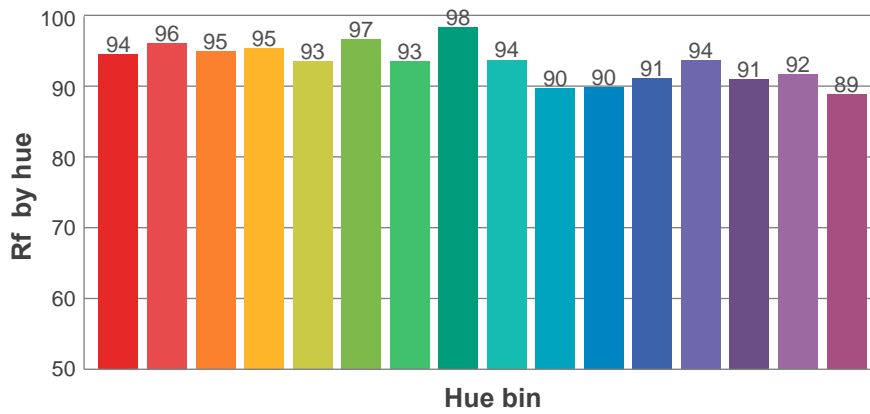
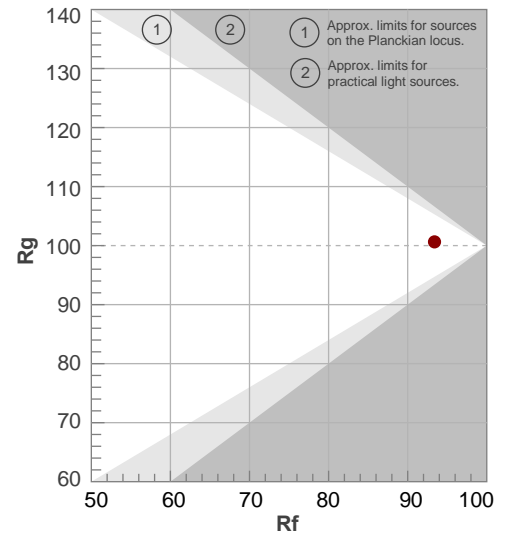
Rf 93.4

Fidelity index Rf

Rg 100.6

Gamut index Rg

Hue Bin	R _f	Shifts (%)	
		Chroma	Hue
1	94	-2%	1%
2	96	-1%	1%
3	95	0%	2%
4	95	-2%	0%
5	93	-3%	1%
6	97	1%	1%
7	93	-2%	2%
8	98	0%	1%
9	94	0%	4%
10	90	1%	6%
11	90	3%	7%
12	91	6%	0%
13	94	2%	-4%
14	91	4%	-6%
15	92	0%	-3%
16	89	1%	-9%



Aiming Angle

