

Photometric / Colorimetric / Electric Report

Fixture Model:

200-HD-S-HI3500-40-EL1-2-HD-FLS-2-WW-NIC-20d

Trim Model:

FLS-2-WW-WH

Date:

8/11/2022



Light efficiency:

62 Lumen/Watt

Light quality:

CRI: 94.4

Color temperature:

3471 K

CIE 1931:

x: 0.406
y: 0.388

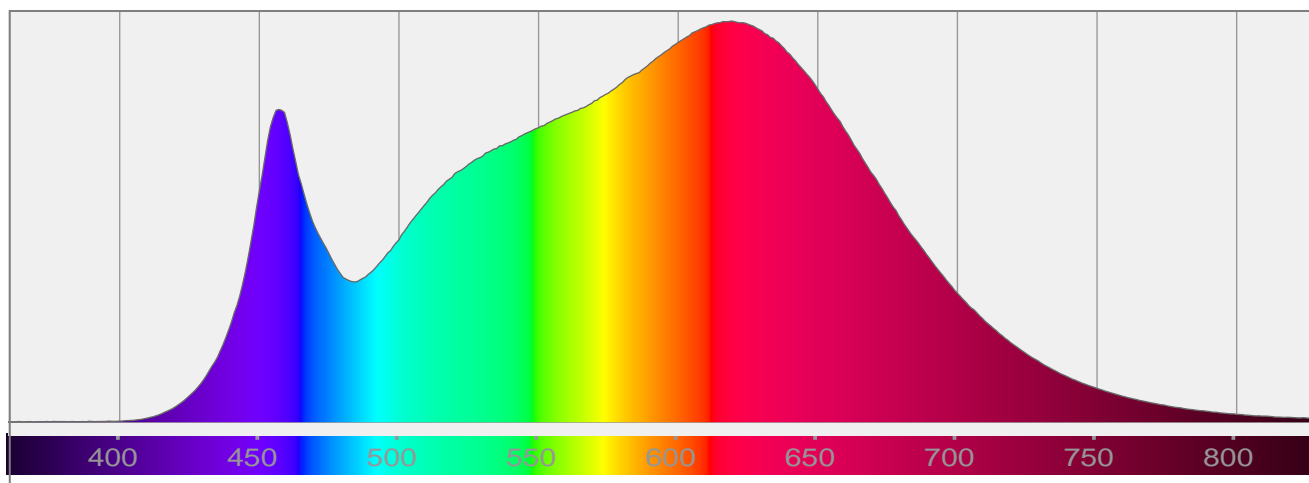
Output: 1627 lm

Peak: 1598 cd

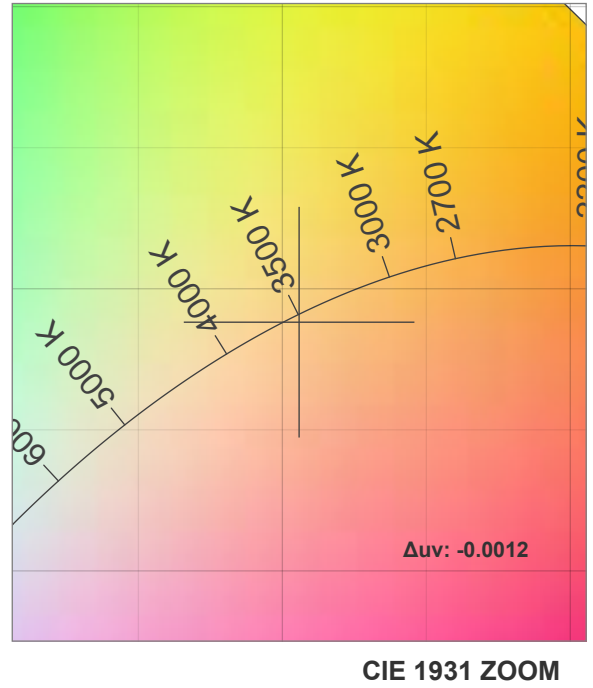
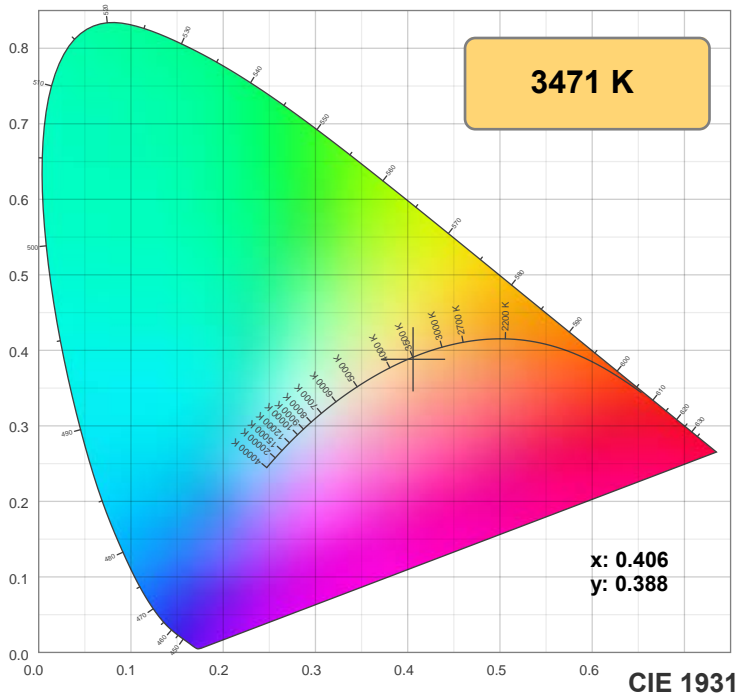
Power: 26.3 W

PF: 0.98

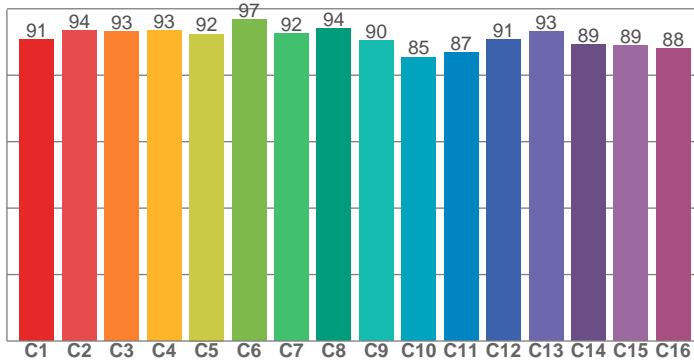
Spectra:



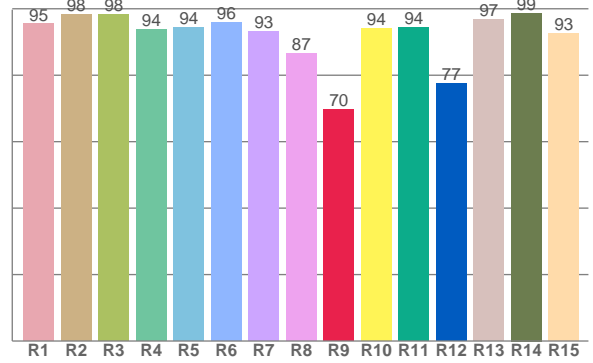
Color Details



TM-30: 91.1



CRI: 94.4 (R1-R8)



CRI R Values:

R1	R2	R3	R4	R5	R6	R7	R8	R9	R10	R11	R12	R13	R14	R15
95.4	98.3	98.3	93.8	94.3	95.7	93.2	86.5	69.6	94.0	94.3	77.4	96.7	98.7	92.6

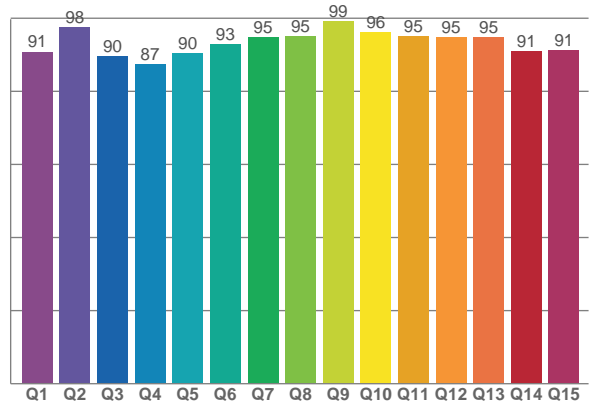
TM30 C Values:

C1	C2	C3	C4	C5	C6	C7	C8	C9	C10	C11	C12	C13	C14	C15	C16
90.8	93.5	93.2	93.4	92.4	96.7	92.5	94.1	90.3	85.5	86.9	90.8	93.1	89.3	89.0	88.0

CQS Q values:

Q1	Q2	Q3	Q4	Q5	Q6	Q7	Q8	Q9	Q10	Q11	Q12	Q13	Q14	Q15
90.8	97.5	89.6	87.3	90.4	92.9	94.8	95.2	99.2	96.2	95.1	94.8	94.8	91.0	91.2

CQS: 92.7



Color Parameters:

CCT	CRI	CRI R9	TM30 Rf	TM30 Rg	CQS	x	y	u	v	Δuv
3471 K	94.4	69.6	91.1	97.9	92.7	0.406	0.388	0.237	0.340	-0.0012

TM-30 Details

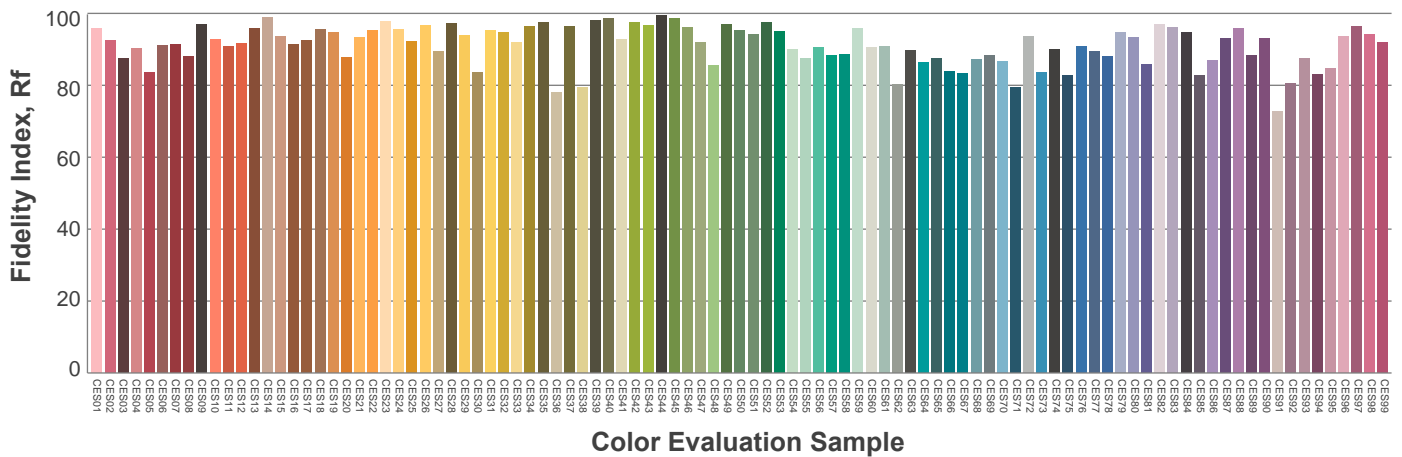
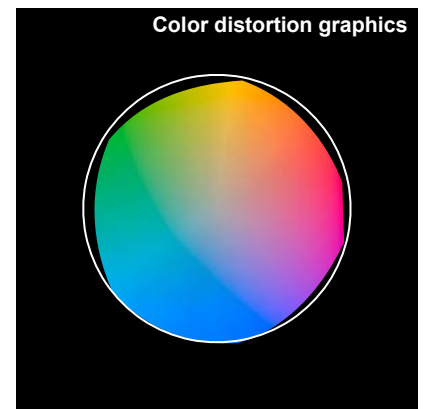
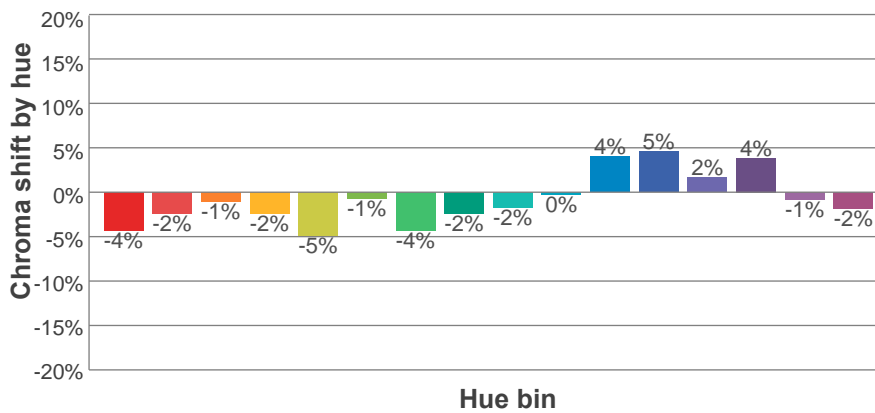
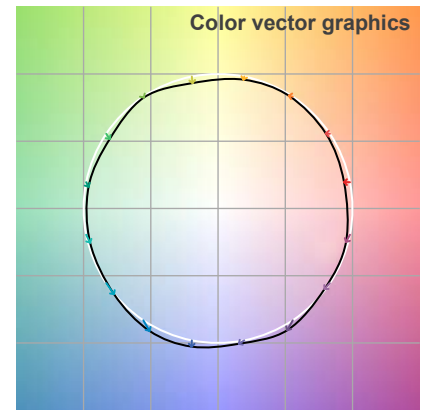
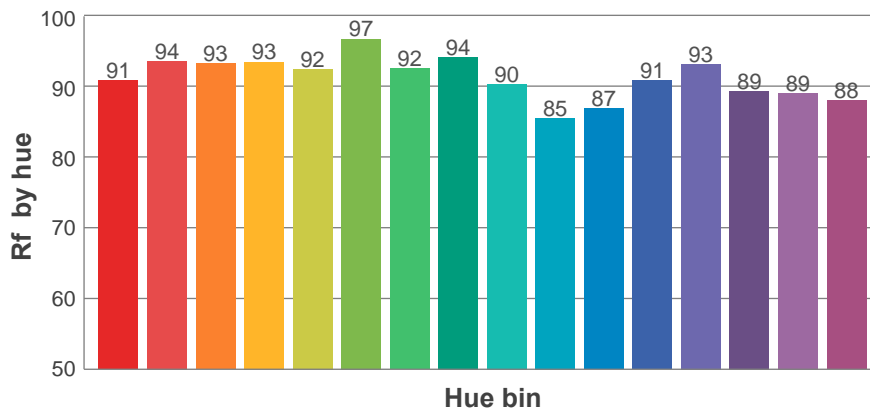
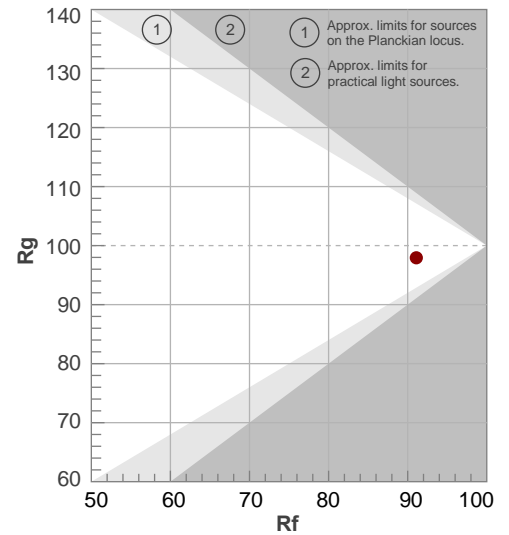
Rf 91.1

Fidelity index Rf

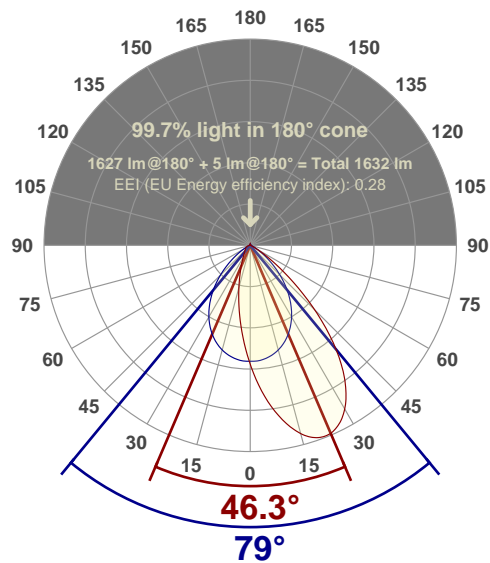
Rg 97.9

Gamut index Rg

Hue Bin	R _f	Shifts (%)	
		Chroma	Hue
1	91	-4%	1%
2	94	-2%	2%
3	93	-1%	3%
4	93	-2%	0%
5	92	-5%	0%
6	97	-1%	0%
7	92	-4%	2%
8	94	-2%	3%
9	90	-2%	6%
10	85	0%	10%
11	87	4%	8%
12	91	5%	1%
13	93	2%	-4%
14	89	4%	-7%
15	89	-1%	-6%
16	88	-2%	-6%



Angular Distribution Through 0° and 90° Planes



Beam Angle: 79°W x 46.3°L

Beam Details

