

## Photometric / Colorimetric / Electric Report

Fixture Model:

200-HD-S-HI3500-60-EL1-2-HD-FLS-2-BV-NIC

Trim Model:

FLS-2-BV-WH

Date:

8/9/2022



Light efficiency:

80 Lumen/Watt

Light quality:

CRI: 94.4

Color temperature:

3502 K

CIE 1931:

x: 0.404  
y: 0.387

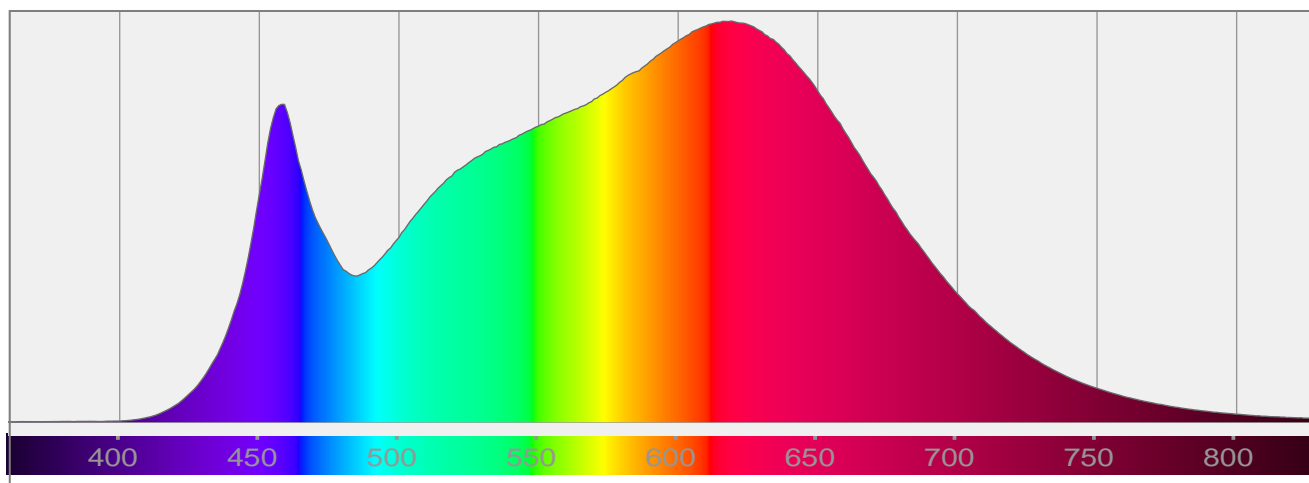
Output: 2065 lm

Peak: 2058 cd

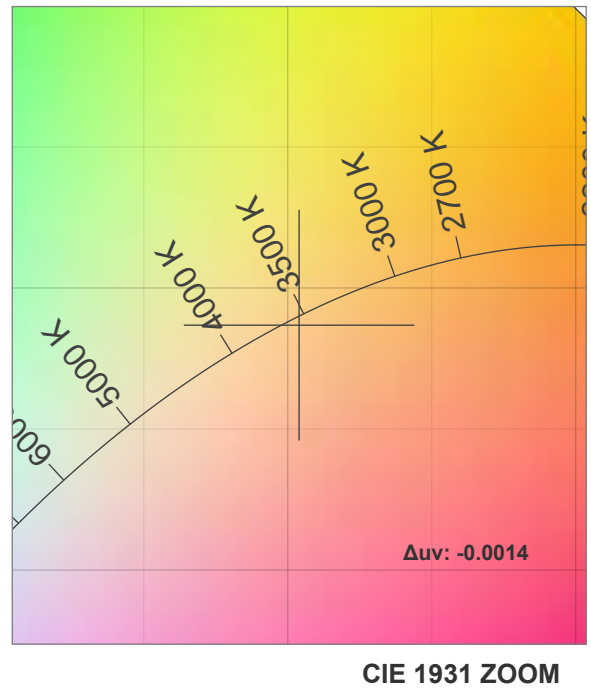
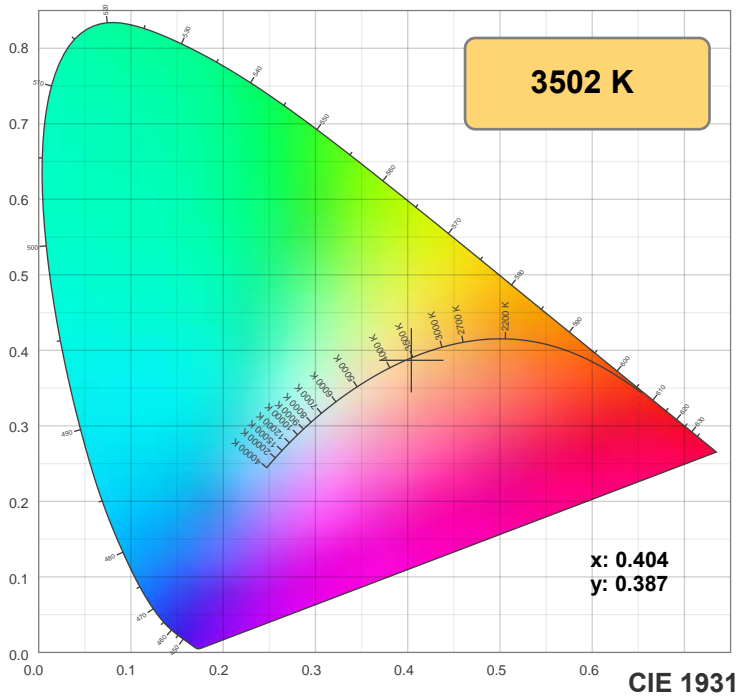
Power: 25.9 W

PF: 0.98

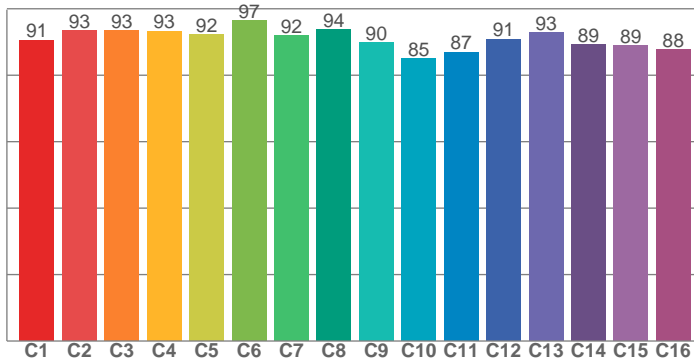
Spectra:



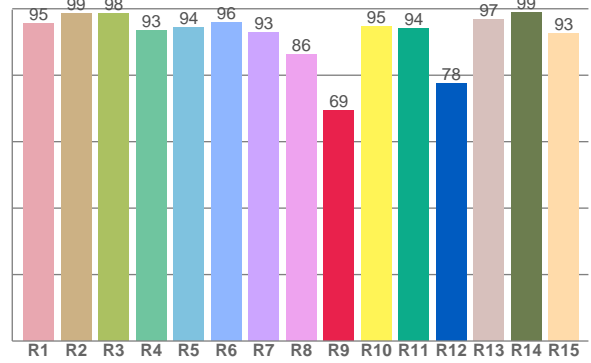
## Color Details



**TM-30: 90.9**



**CRI: 94.4 (R1-R8)**



**CRI R Values:**

R1	R2	R3	R4	R5	R6	R7	R8	R9	R10	R11	R12	R13	R14	R15
95.5	98.5	98.5	93.5	94.3	95.8	92.9	86.3	69.5	94.6	94.1	77.5	96.9	99.0	92.7

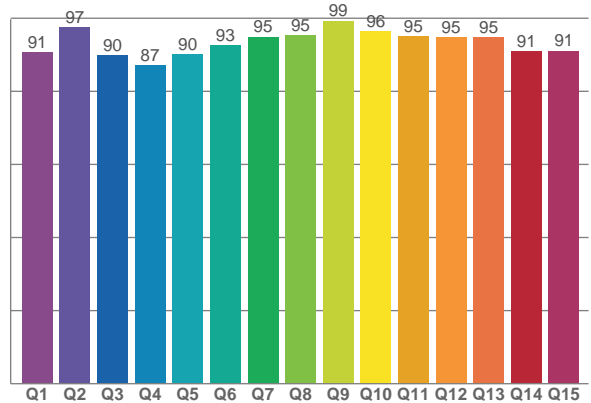
**TM30 C Values:**

C1	C2	C3	C4	C5	C6	C7	C8	C9	C10	C11	C12	C13	C14	C15	C16
90.6	93.4	93.3	93.3	92.3	96.5	92.0	93.7	89.9	85.1	86.9	90.9	92.9	89.2	88.8	87.8

**CQS Q values:**

Q1	Q2	Q3	Q4	Q5	Q6	Q7	Q8	Q9	Q10	Q11	Q12	Q13	Q14	Q15
90.6	97.5	89.9	87.2	90.1	92.6	94.9	95.2	99.3	96.5	95.1	94.7	94.7	91.0	91.1

**CQS: 92.6**



**Color Parameters:**

CCT	CRI	CRI R9	TM30 Rf	TM30 Rg	CQS	x	y	u	v	Δuv
3502 K	94.4	69.5	90.9	97.7	92.6	0.404	0.387	0.236	0.340	-0.0014

# TM-30 Details

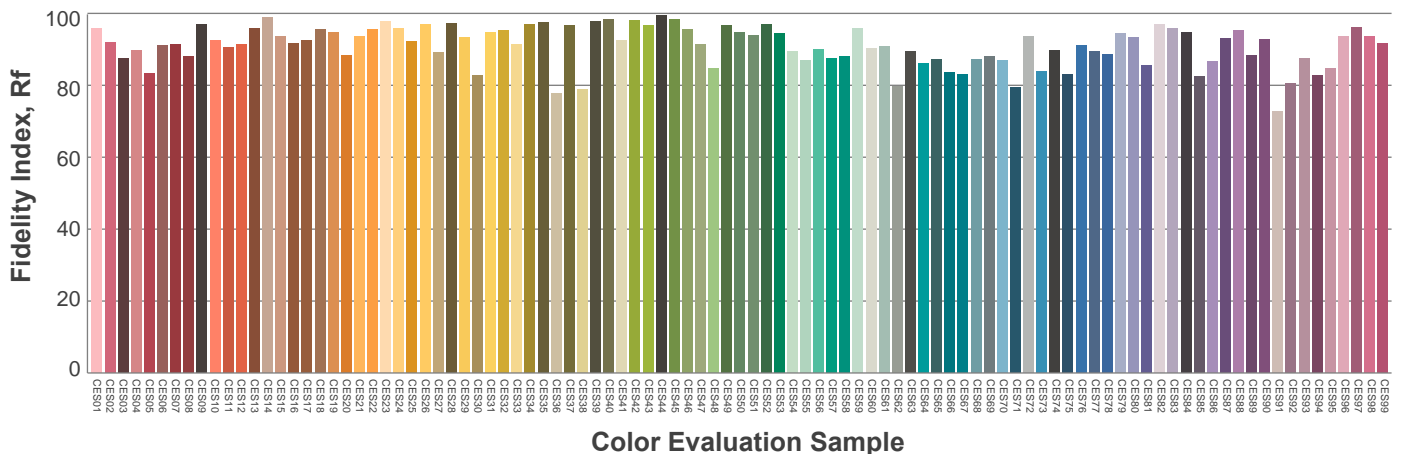
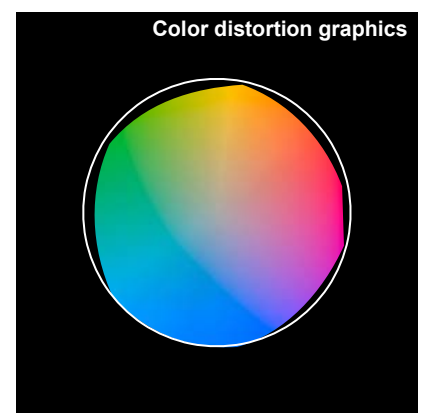
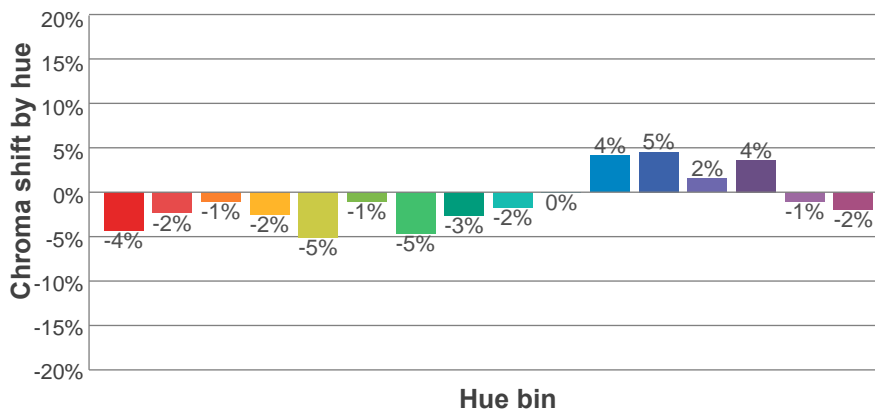
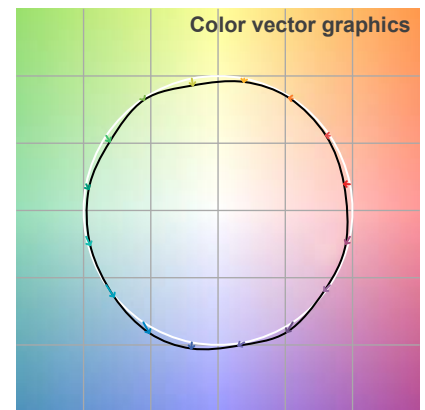
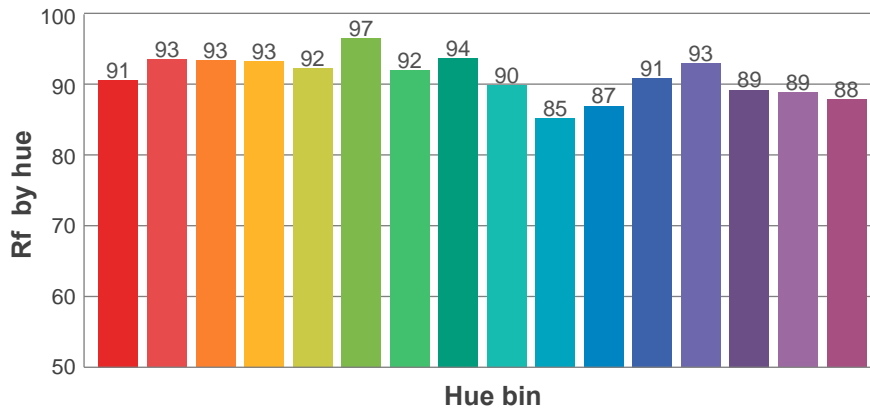
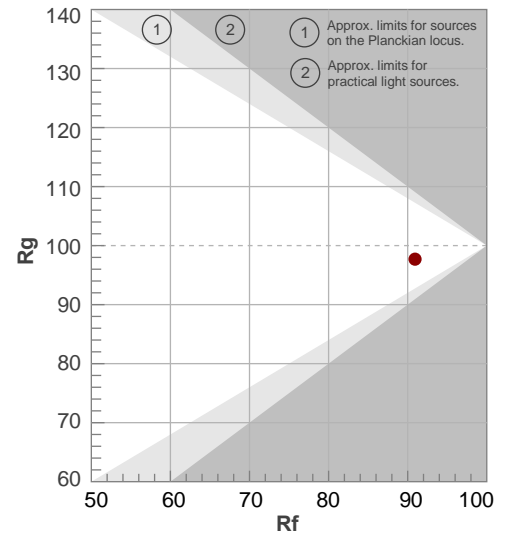
**Rf 90.9**

Fidelity index Rf

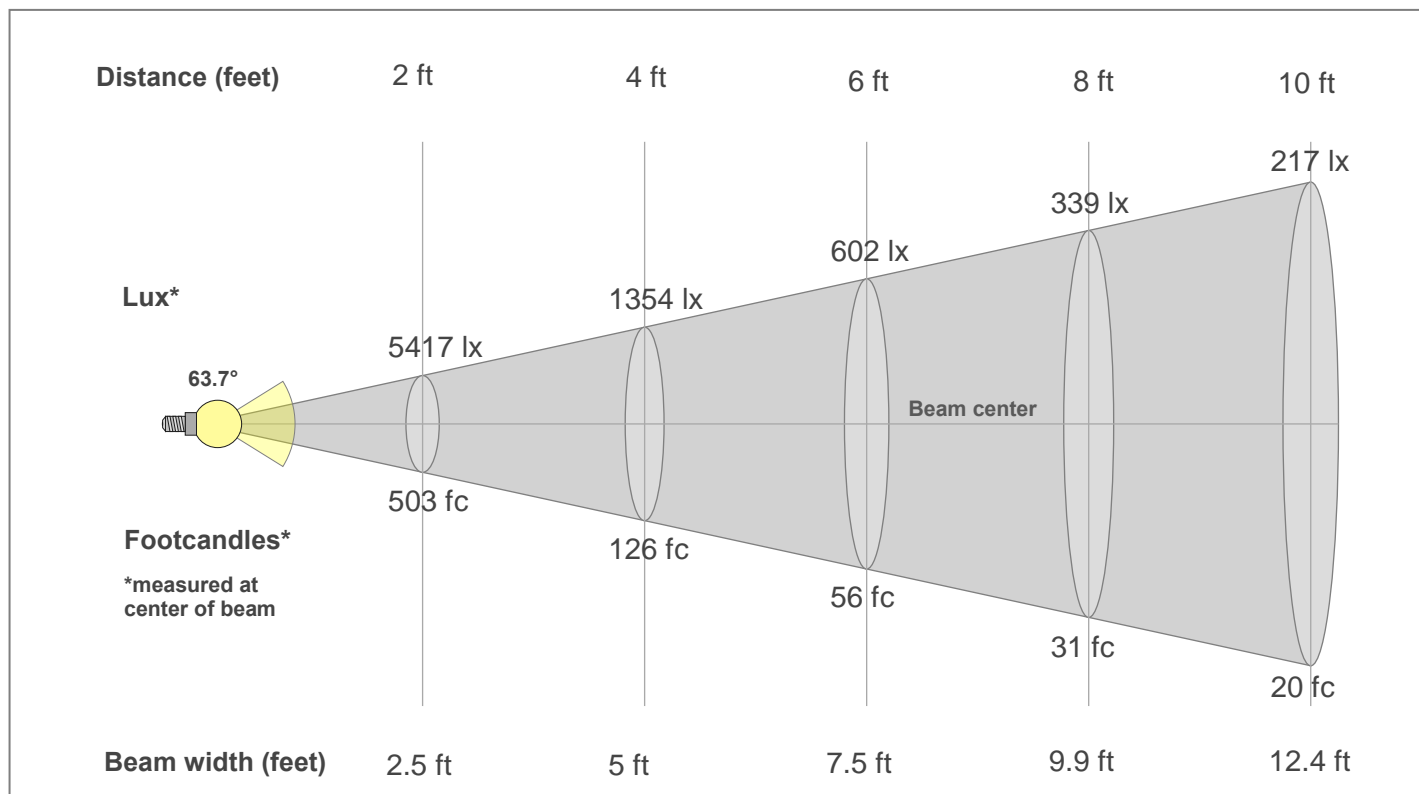
**Rg 97.7**

Gamut index Rg

Hue Bin	R <sub>f</sub>	Shifts (%)	
		Chroma	Hue
1	91	-4%	1%
2	93	-2%	2%
3	93	-1%	3%
4	93	-2%	0%
5	92	-5%	0%
6	97	-1%	0%
7	92	-5%	2%
8	94	-3%	3%
9	90	-2%	7%
10	85	0%	10%
11	87	4%	8%
12	91	5%	0%
13	93	2%	-5%
14	89	4%	-8%
15	89	-1%	-6%
16	88	-2%	-6%



## Beam Details



### Beam Intensities from 1-20m

1m	2m	3m	4m	5m	6m	7m	8m	9m	10m	11m	12m	13m	14m	15m	16m	17m	18m	19m	20m
3.3ft	6.6ft	9.8ft	13.1ft	16.4ft	19.7ft	23ft	26.2ft	29.5ft	32.8ft	36.1ft	39.4ft	42.7ft	45.9ft	49.2ft	52.5ft	55.8ft	59.1ft	62.3ft	65.6ft
2013lx	503lx	224lx	126lx	81lx	56lx	41lx	31lx	25lx	20lx	17lx	14lx	12lx	10lx	9lx	8lx	7lx	6lx	6lx	5lx
187fc	46.8fc	20.8fc	11.7fc	7.5fc	5.2fc	3.8fc	2.9fc	2.3fc	1.9fc	1.5fc	1.3fc	1.1fc	1fc	0.8fc	0.7fc	0.6fc	0.6fc	0.5fc	0.5fc

### Intensities in 0° c-plane

0°	2°	4°	6°	8°	10°	12°	14°	16°	18°	20°	22°	24°	26°	28°	30°	32°	34°	36°	38°
2013	2015	2019	2026	2036	2047	2055	2054	2041	2009	1954	1872	1762	1624	1453	1247	1013	769	540	363
100%	100%	100%	101%	101%	102%	102%	102%	101%	100%	97%	93%	88%	81%	72%	62%	50%	38%	27%	18%

### Intensities in 90° c-plane

0°	2°	4°	6°	8°	10°	12°	14°	16°	18°	20°	22°	24°	26°	28°	30°	32°	34°	36°	38°
2013	2015	2019	2026	2036	2047	2055	2054	2041	2009	1954	1872	1762	1624	1453	1247	1013	769	540	363
100%	100%	100%	101%	101%	102%	102%	102%	101%	100%	97%	93%	88%	81%	72%	62%	50%	38%	27%	18%

### Intensities in 180° c-plane

0°	2°	4°	6°	8°	10°	12°	14°	16°	18°	20°	22°	24°	26°	28°	30°	32°	34°	36°	38°
2013	2015	2019	2026	2036	2047	2055	2054	2041	2009	1954	1872	1762	1624	1453	1247	1013	769	540	363
100%	100%	100%	101%	101%	102%	102%	102%	101%	100%	97%	93%	88%	81%	72%	62%	50%	38%	27%	18%

### Intensities in 270° c-plane

0°	2°	4°	6°	8°	10°	12°	14°	16°	18°	20°	22°	24°	26°	28°	30°	32°	34°	36°	38°
2013	2015	2019	2026	2036	2047	2055	2054	2041	2009	1954	1872	1762	1624	1453	1247	1013	769	540	363
100%	100%	100%	101%	101%	102%	102%	102%	101%	100%	97%	93%	88%	81%	72%	62%	50%	38%	27%	18%

Beam angle 50%	Field angle 10%	Cut-off angle 2.5%	Intensity ratio in 120°	Intensity ratio in 90°
63.7°	81.9°	96.1°	99.0%	97.1%