

## Photometric / Colorimetric / Electric Report

Fixture Model:

200-HD-S-HI3500-60-EL1-2-HD-FLS-2-NIC

Trim Model:

FLS-2-WH

Date:

8/10/2022



Light efficiency:

54 Lumen/Watt

Light quality:

CRI: 94.5

Color temperature:

3497 K

CIE 1931:

x: 0.404  
y: 0.387

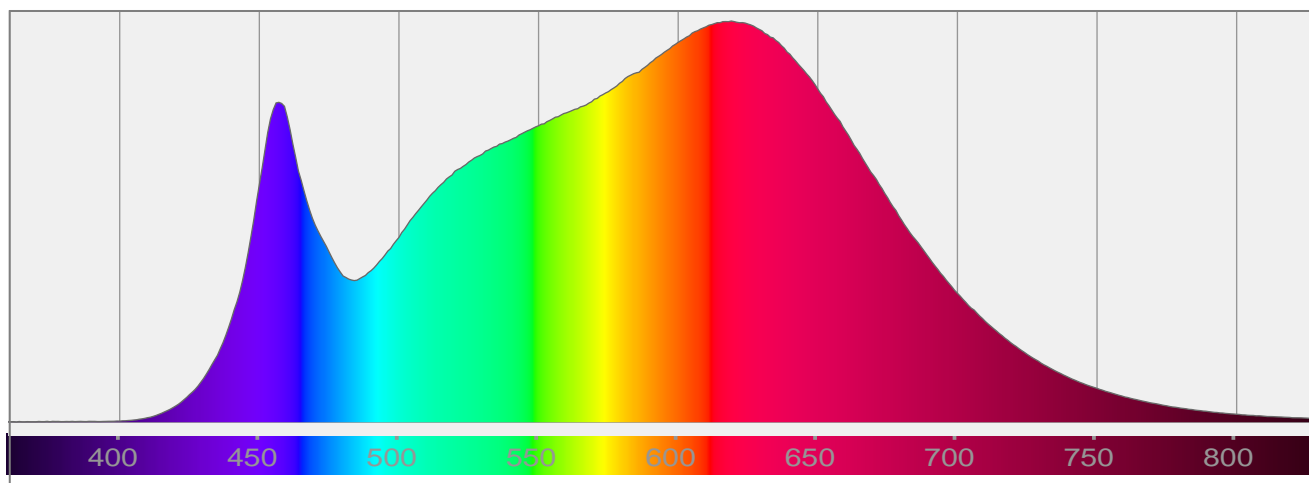
Output: 1414 lm

Peak: 2038 cd

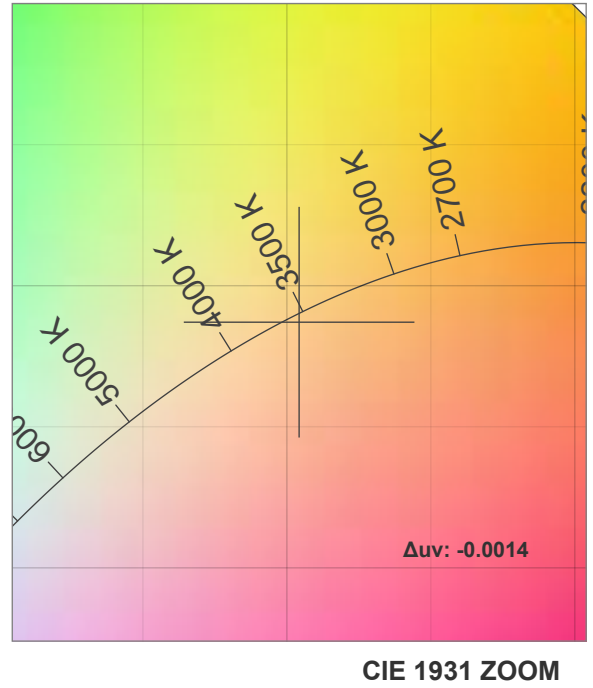
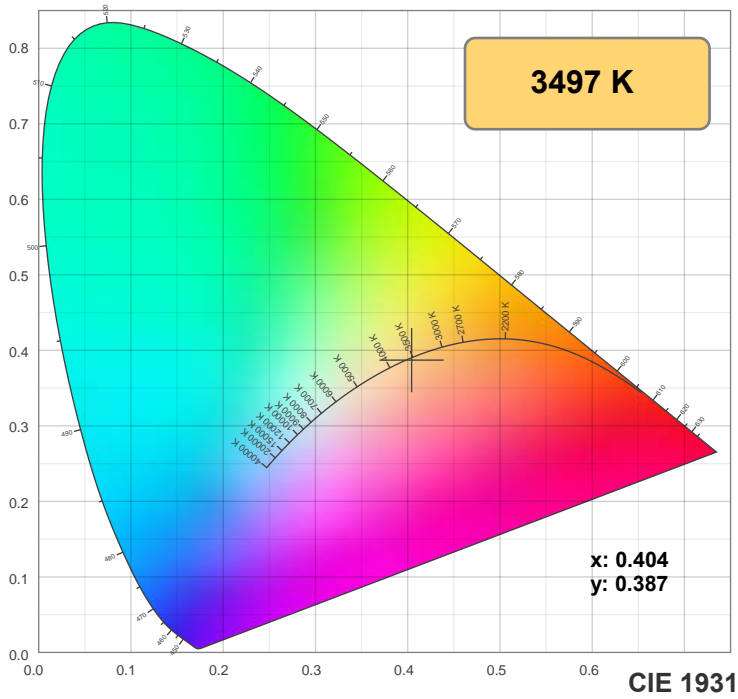
Power: 26.3 W

PF: 0.98

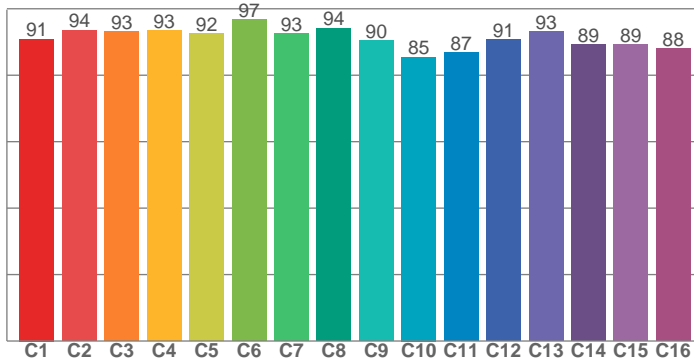
Spectra:



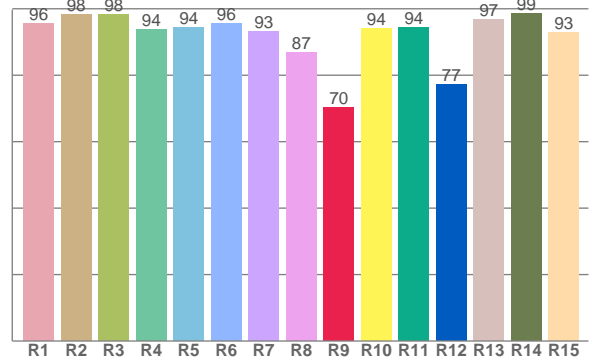
## Color Details



**TM-30: 91.1**



**CRI: 94.5 (R1-R8)**



**CRI R Values:**

R1	R2	R3	R4	R5	R6	R7	R8	R9	R10	R11	R12	R13	R14	R15
95.5	98.3	98.3	93.8	94.4	95.7	93.3	86.8	70.2	94.1	94.4	77.3	96.8	98.7	92.8

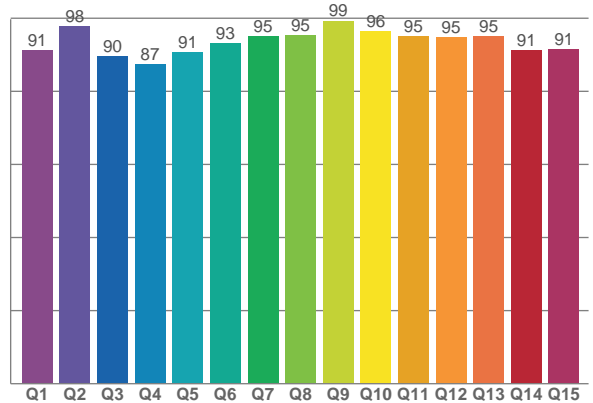
**TM30 C Values:**

C1	C2	C3	C4	C5	C6	C7	C8	C9	C10	C11	C12	C13	C14	C15	C16
90.9	93.6	93.1	93.5	92.4	96.7	92.6	94.2	90.4	85.5	86.8	90.8	93.2	89.3	89.1	88.1

**CQS Q values:**

Q1	Q2	Q3	Q4	Q5	Q6	Q7	Q8	Q9	Q10	Q11	Q12	Q13	Q14	Q15
91.2	97.8	89.6	87.4	90.6	93.2	95.0	95.3	99.3	96.3	95.2	94.9	95.0	91.3	91.5

**CQS: 92.9**



**Color Parameters:**

CCT	CRI	CRI R9	TM30 Rf	TM30 Rg	CQS	x	y	u	v	Δuv
3497 K	94.5	70.2	91.1	98.0	92.9	0.404	0.387	0.237	0.340	-0.0014

# TM-30 Details

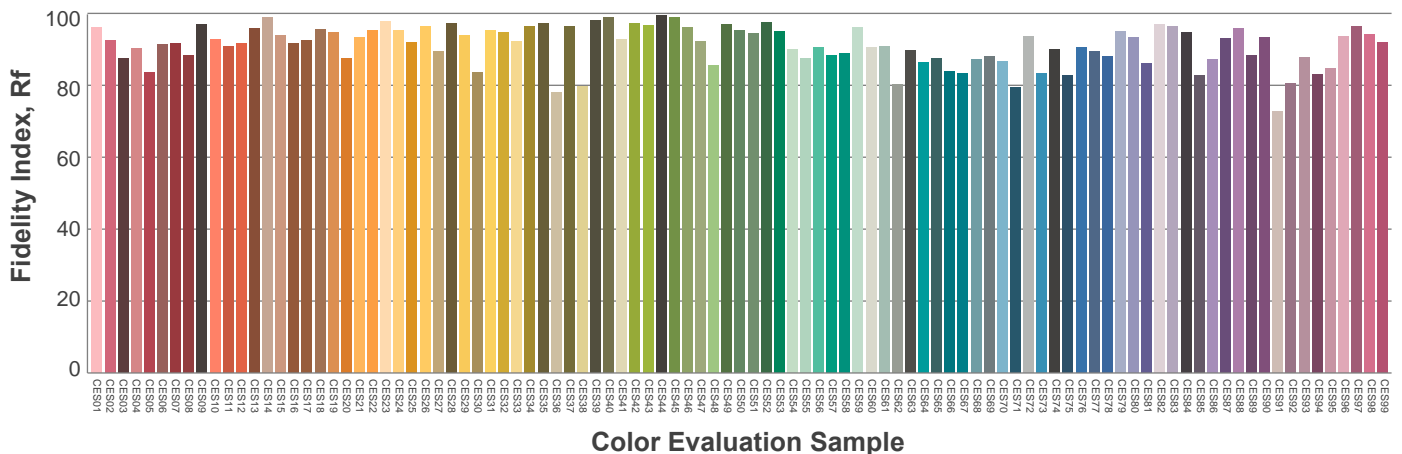
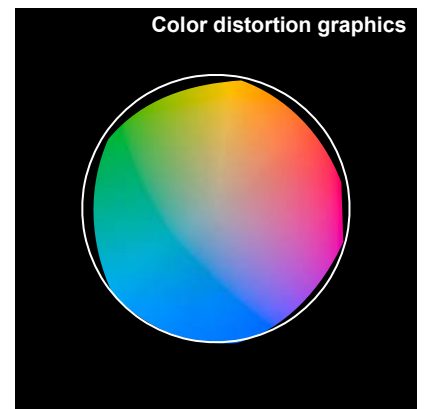
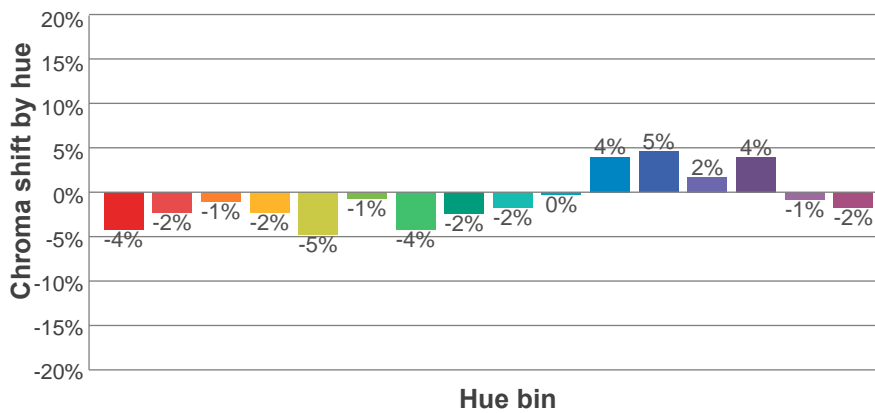
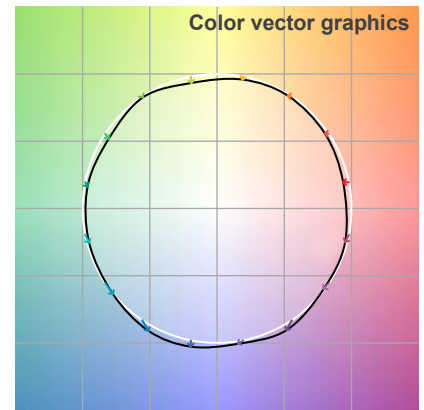
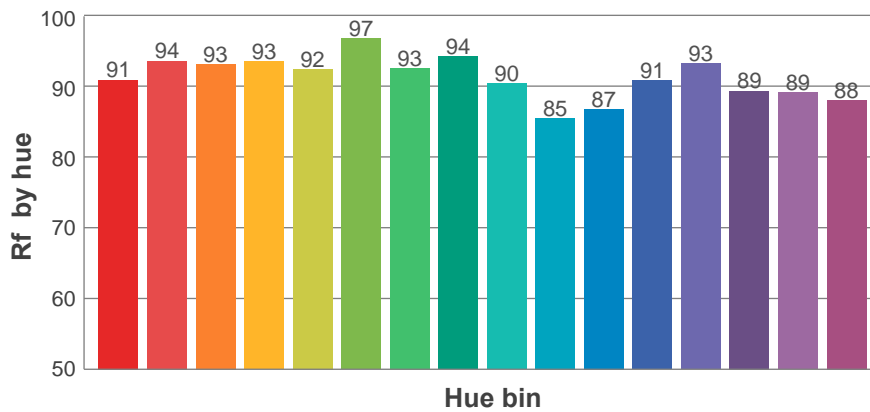
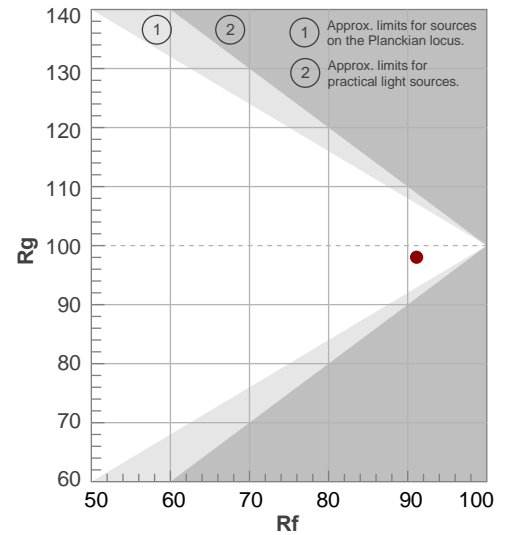
**Rf 91.1**

Fidelity index Rf

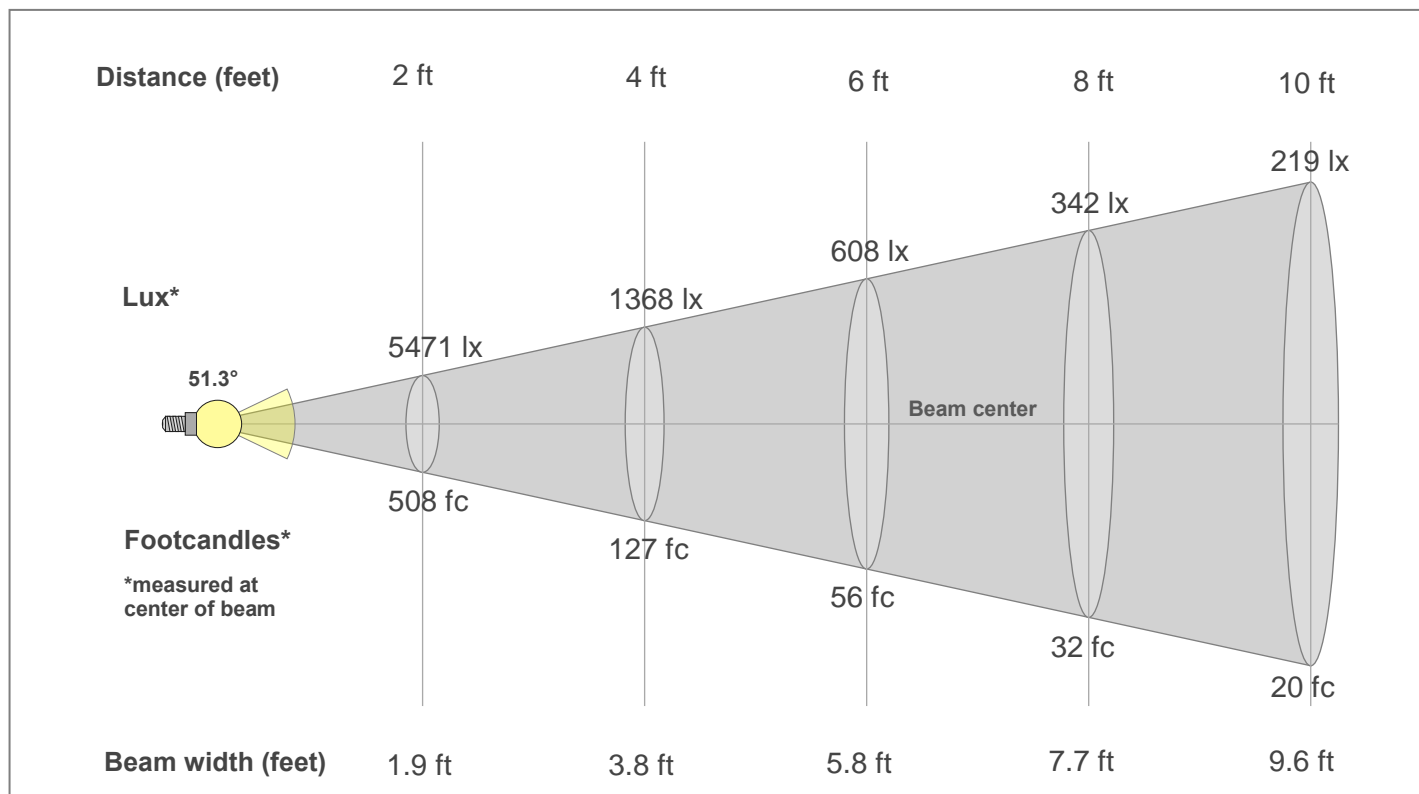
**Rg 98.0**

Gamut index Rg

Hue Bin	R <sub>f</sub>	Shifts (%)	
		Chroma	Hue
1	91	-4%	1%
2	94	-2%	2%
3	93	-1%	3%
4	93	-2%	0%
5	92	-5%	0%
6	97	-1%	0%
7	93	-4%	2%
8	94	-2%	3%
9	90	-2%	6%
10	85	0%	10%
11	87	4%	8%
12	91	5%	1%
13	93	2%	-4%
14	89	4%	-7%
15	89	-1%	-6%
16	88	-2%	-6%



## Beam Details



### Beam Intensities from 1-20m

1m	2m	3m	4m	5m	6m	7m	8m	9m	10m	11m	12m	13m	14m	15m	16m	17m	18m	19m	20m
3.3ft	6.6ft	9.8ft	13.1ft	16.4ft	19.7ft	23ft	26.2ft	29.5ft	32.8ft	36.1ft	39.4ft	42.7ft	45.9ft	49.2ft	52.5ft	55.8ft	59.1ft	62.3ft	65.6ft
2033lx	508lx	226lx	127lx	81lx	56lx	41lx	32lx	25lx	20lx	17lx	14lx	12lx	10lx	9lx	8lx	7lx	6lx	6lx	5lx
188.9fc	47.2fc	21fc	11.8fc	7.6fc	5.2fc	3.9fc	3fc	2.3fc	1.9fc	1.6fc	1.3fc	1.1fc	1fc	0.8fc	0.7fc	0.7fc	0.6fc	0.5fc	0.5fc

### Intensities in 0° c-plane

0°	2°	4°	6°	8°	10°	12°	14°	16°	18°	20°	22°	24°	26°	28°	30°	32°	34°	36°	38°
2033	2033	2036	2038	2037	2033	2023	2000	1947	1845	1698	1498	1242	978	753	554	395	284	193	115
100%	100%	100%	100%	100%	100%	100%	98%	96%	91%	84%	74%	61%	48%	37%	27%	19%	14%	10%	6%

### Intensities in 90° c-plane

0°	2°	4°	6°	8°	10°	12°	14°	16°	18°	20°	22°	24°	26°	28°	30°	32°	34°	36°	38°
2033	2033	2036	2038	2037	2033	2023	2000	1947	1845	1698	1498	1242	978	753	554	395	284	193	115
100%	100%	100%	100%	100%	100%	100%	98%	96%	91%	84%	74%	61%	48%	37%	27%	19%	14%	10%	6%

### Intensities in 180° c-plane

0°	2°	4°	6°	8°	10°	12°	14°	16°	18°	20°	22°	24°	26°	28°	30°	32°	34°	36°	38°
2033	2033	2036	2038	2037	2033	2023	2000	1947	1845	1698	1498	1242	978	753	554	395	284	193	115
100%	100%	100%	100%	100%	100%	100%	98%	96%	91%	84%	74%	61%	48%	37%	27%	19%	14%	10%	6%

### Intensities in 270° c-plane

0°	2°	4°	6°	8°	10°	12°	14°	16°	18°	20°	22°	24°	26°	28°	30°	32°	34°	36°	38°
2033	2033	2036	2038	2037	2033	2023	2000	1947	1845	1698	1498	1242	978	753	554	395	284	193	115
100%	100%	100%	100%	100%	100%	100%	98%	96%	91%	84%	74%	61%	48%	37%	27%	19%	14%	10%	6%

Beam angle 50%	Field angle 10%	Cut-off angle 2.5%	Intensity ratio in 120°	Intensity ratio in 90°
51.3°	71.5°	81.5°	99.6%	99.4%