

## Photometric / Colorimetric / Electric Report

Fixture Model:

200-HD-R-HI3500-60-EL1-2-HD-FLR-2-WW-NIC-20d

Trim Model:

FLR-2-WW-WH

Date:

8/11/2022



Light efficiency:

54 Lumen/Watt

Light quality:

CRI: 94.4

Color temperature:

3484 K

CIE 1931:

x: 0.405  
y: 0.388

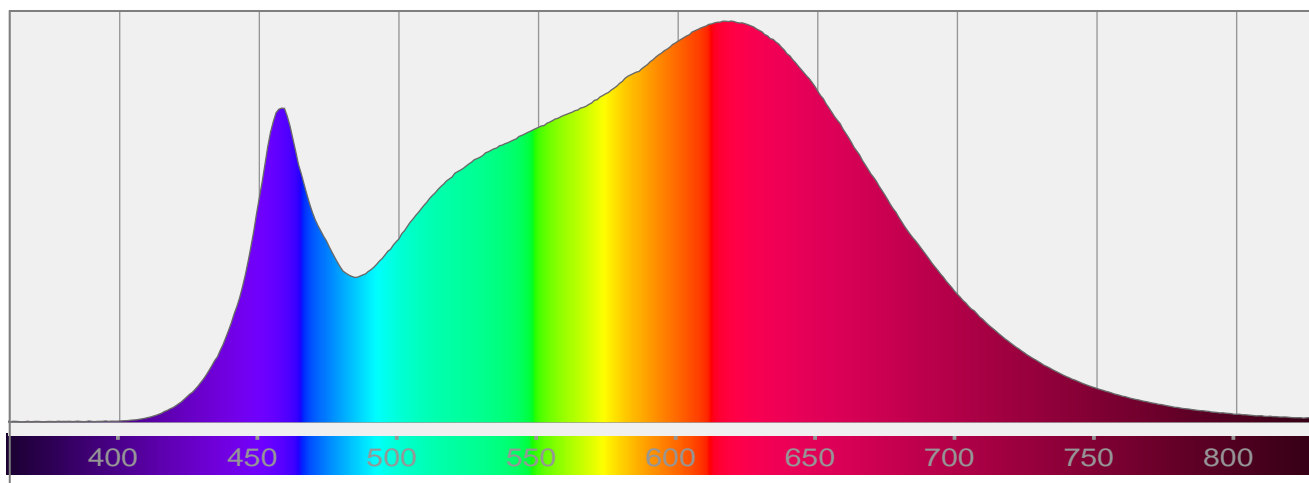
Output: 1427 lm

Peak: 1159 cd

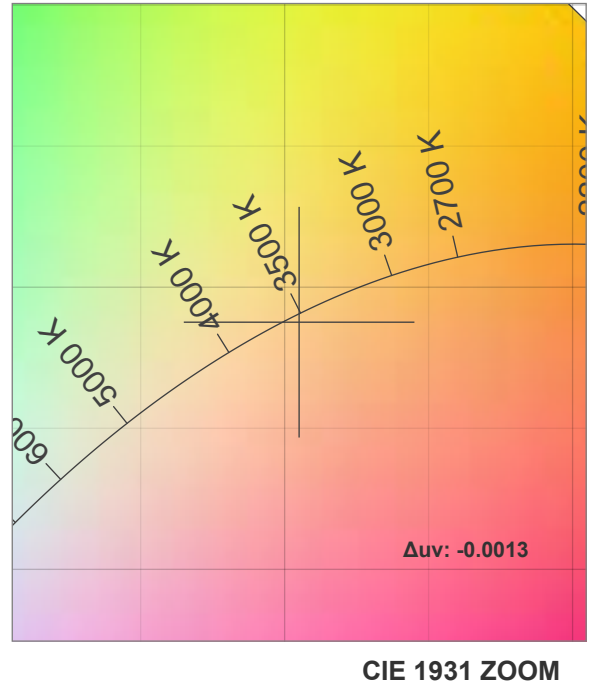
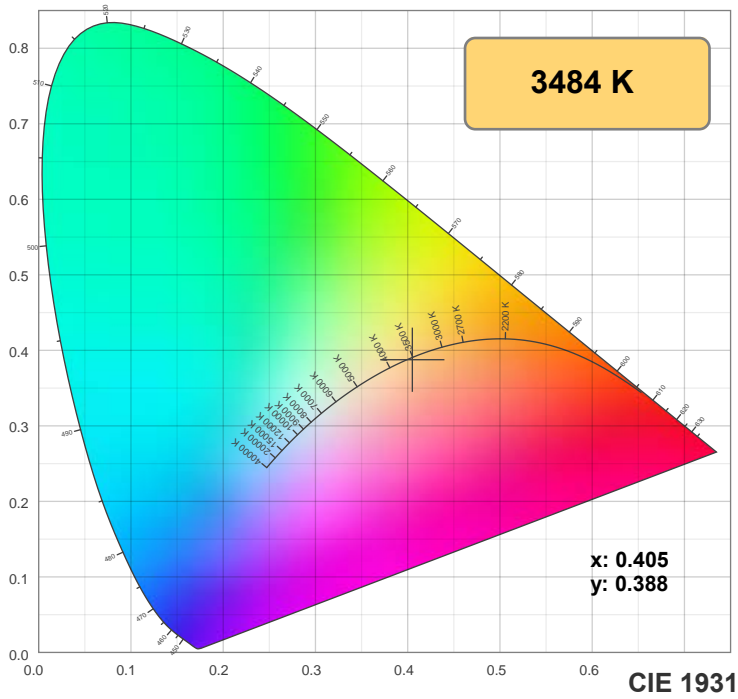
Power: 26.2 W

PF: 0.98

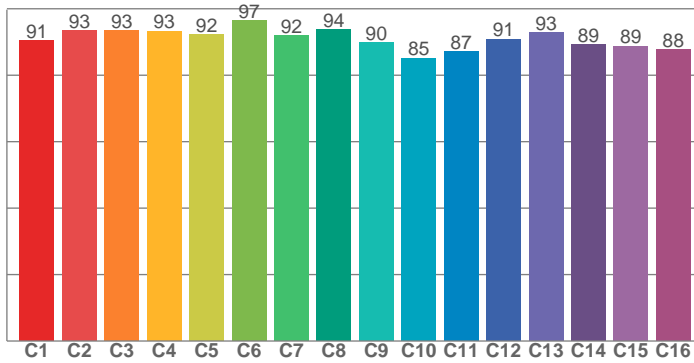
Spectra:



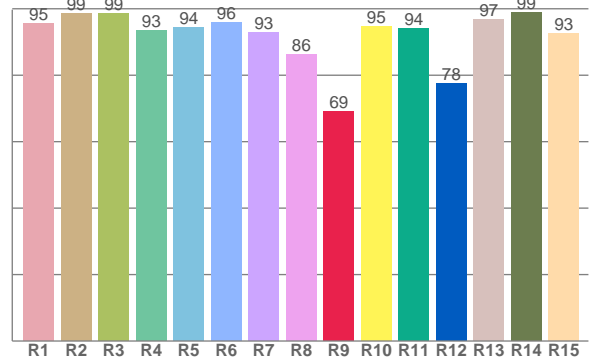
## Color Details



**TM-30: 90.9**



**CRI: 94.4 (R1-R8)**



**CRI R Values:**

R1	R2	R3	R4	R5	R6	R7	R8	R9	R10	R11	R12	R13	R14	R15
95.5	98.5	98.5	93.5	94.3	95.9	92.8	86.2	69.2	94.6	94.1	77.6	96.8	99.0	92.6

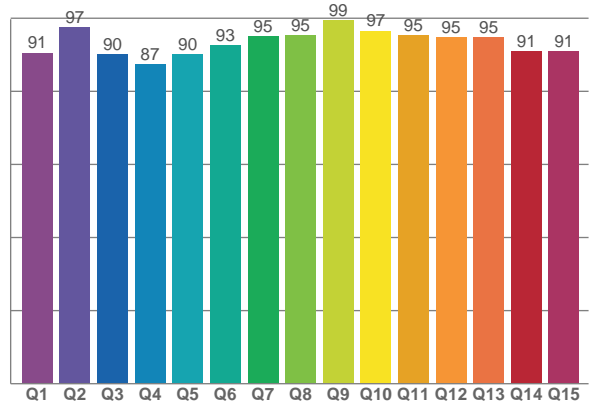
**TM30 C Values:**

C1	C2	C3	C4	C5	C6	C7	C8	C9	C10	C11	C12	C13	C14	C15	C16
90.5	93.5	93.4	93.3	92.3	96.5	91.9	93.7	89.8	85.2	87.0	90.9	92.8	89.2	88.8	87.8

**CQS Q values:**

Q1	Q2	Q3	Q4	Q5	Q6	Q7	Q8	Q9	Q10	Q11	Q12	Q13	Q14	Q15
90.6	97.4	90.1	87.4	90.2	92.6	95.0	95.3	99.3	96.6	95.2	94.9	94.8	90.9	91.0

**CQS: 92.7**



**Color Parameters:**

CCT	CRI	CRI R9	TM30 Rf	TM30 Rg	CQS	x	y	u	v	Δuv
3484 K	94.4	69.2	90.9	97.7	92.7	0.405	0.388	0.237	0.340	-0.0013

# TM-30 Details

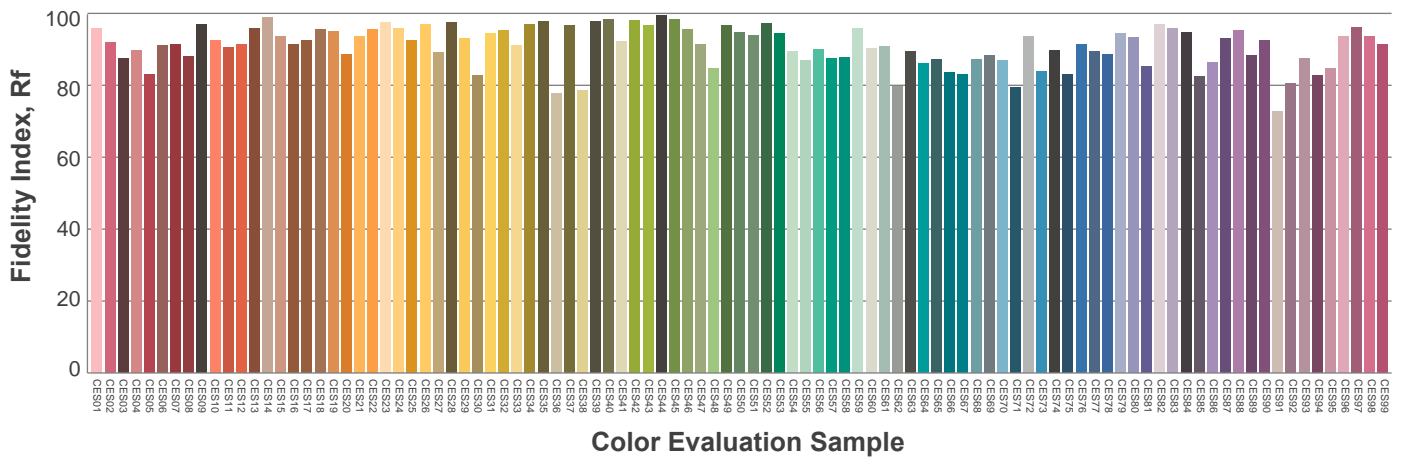
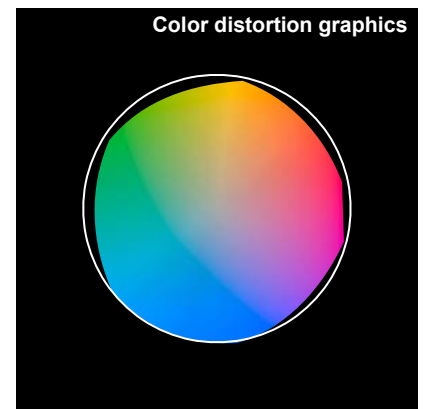
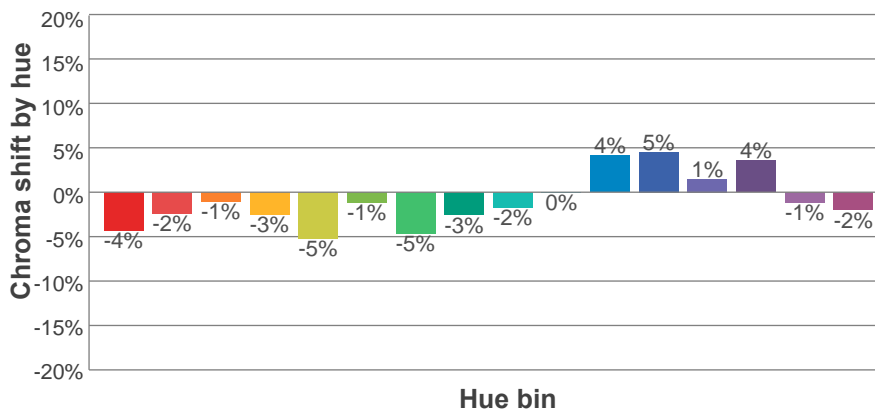
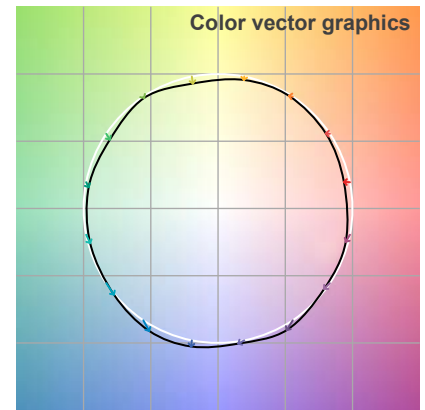
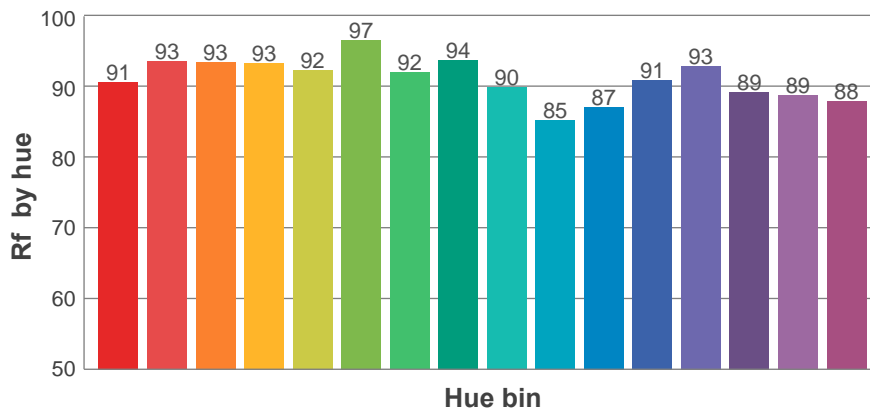
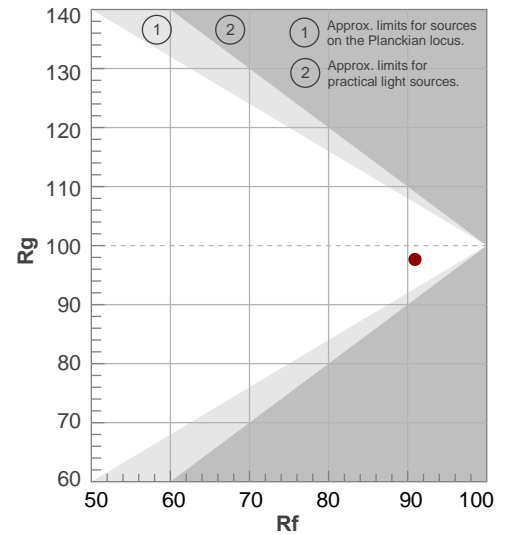
**Rf 90.9**

Fidelity index Rf

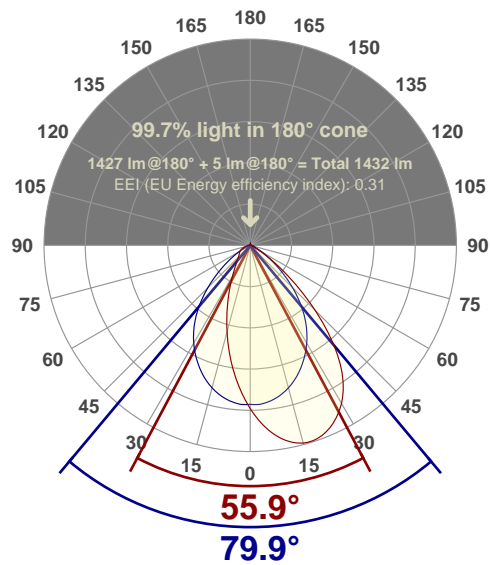
**Rg 97.7**

Gamut index Rg

Hue Bin	R <sub>f</sub>	Shifts (%)	
		Chroma	Hue
1	91	-4%	1%
2	93	-2%	2%
3	93	-1%	3%
4	93	-3%	0%
5	92	-5%	0%
6	97	-1%	0%
7	92	-5%	2%
8	94	-3%	3%
9	90	-2%	7%
10	85	0%	10%
11	87	4%	8%
12	91	5%	0%
13	93	1%	-5%
14	89	4%	-8%
15	89	-1%	-6%
16	88	-2%	-6%



## Angular Distribution Through 0° and 90° Planes



**Beam Angle: 79.9°W x 55.9°L**

## Beam Details

