

## Photometric / Colorimetric / Electric Report

Fixture Model:

200-HD-R-HI3500-25-EL1-2-HD-FLR-2-BV-NIC

Trim Model:

FLR-2-BV-WH

Date:

8/10/2022



Light efficiency:

62 Lumen/Watt

Light quality:

CRI: 94.4

Color temperature:

3489 K

CIE 1931:

x: 0.405  
y: 0.387

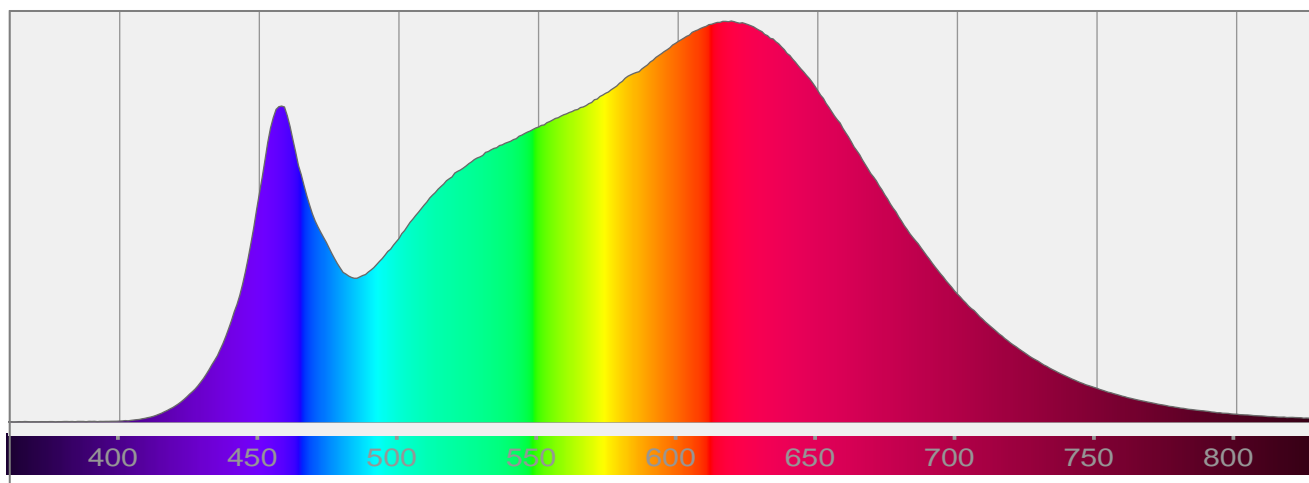
Output: 1625 lm

Peak: 4956 cd

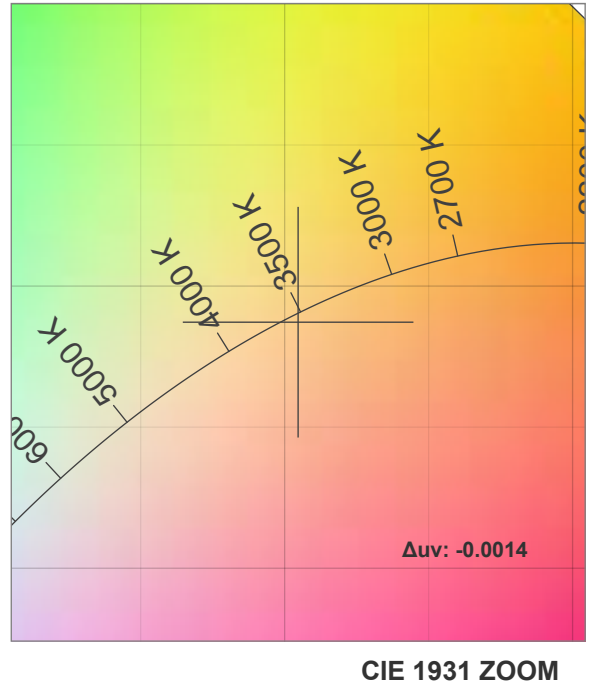
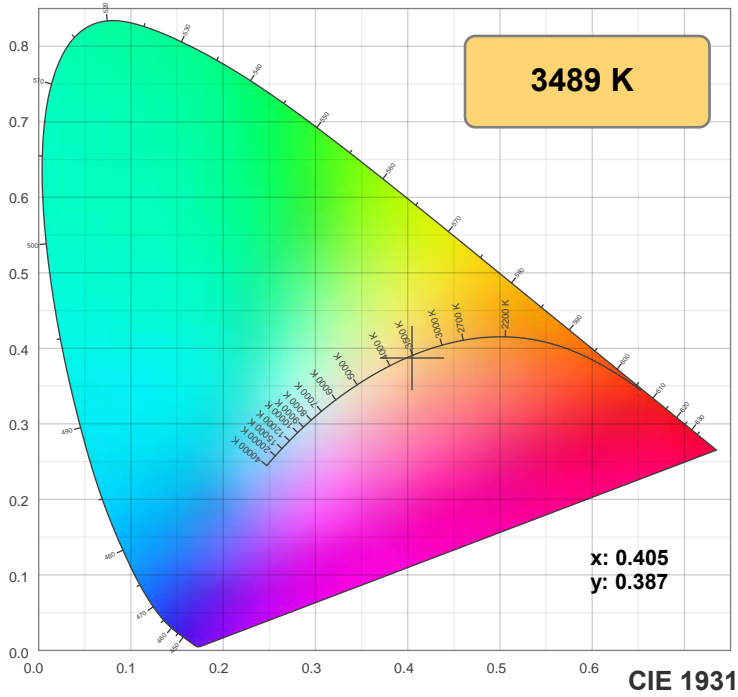
Power: 26.2 W

PF: 0.98

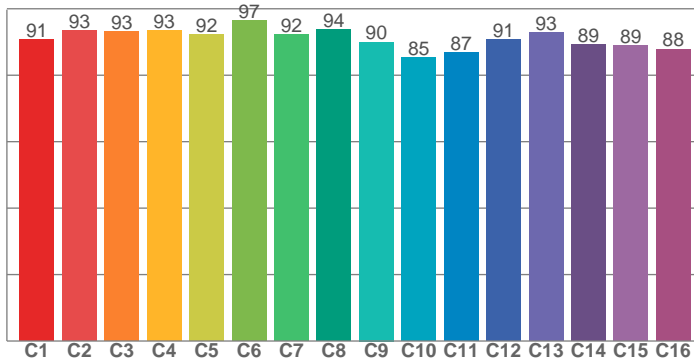
Spectra:



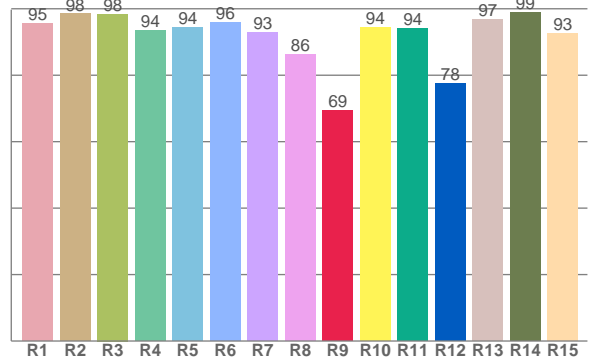
## Color Details



**TM-30: 91.0**



**CRI: 94.4 (R1-R8)**



**CRI R Values:**

R1	R2	R3	R4	R5	R6	R7	R8	R9	R10	R11	R12	R13	R14	R15
95.5	98.4	98.4	93.6	94.3	95.8	93.0	86.4	69.5	94.4	94.1	77.5	96.8	98.9	92.7

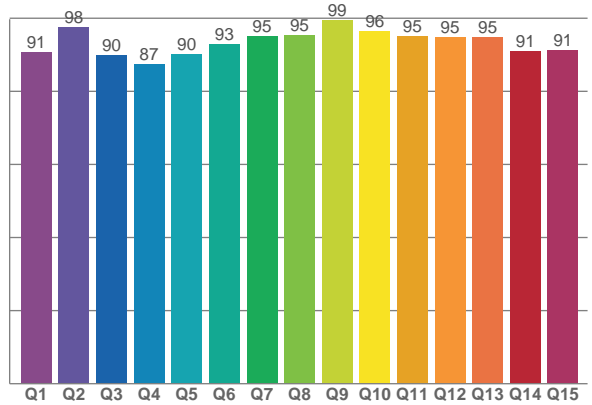
**TM30 C Values:**

C1	C2	C3	C4	C5	C6	C7	C8	C9	C10	C11	C12	C13	C14	C15	C16
90.6	93.5	93.2	93.3	92.3	96.6	92.2	93.8	90.0	85.2	86.9	90.8	92.9	89.2	88.9	87.9

**CQS Q values:**

Q1	Q2	Q3	Q4	Q5	Q6	Q7	Q8	Q9	Q10	Q11	Q12	Q13	Q14	Q15
90.8	97.5	89.9	87.3	90.2	92.8	95.0	95.2	99.3	96.4	95.1	94.8	94.8	91.0	91.2

**CQS: 92.7**



**Color Parameters:**

CCT	CRI	CRI R9	TM30 Rf	TM30 Rg	CQS	x	y	u	v	Δuv
3489 K	94.4	69.5	91.0	97.8	92.7	0.405	0.387	0.237	0.340	-0.0014

# TM-30 Details

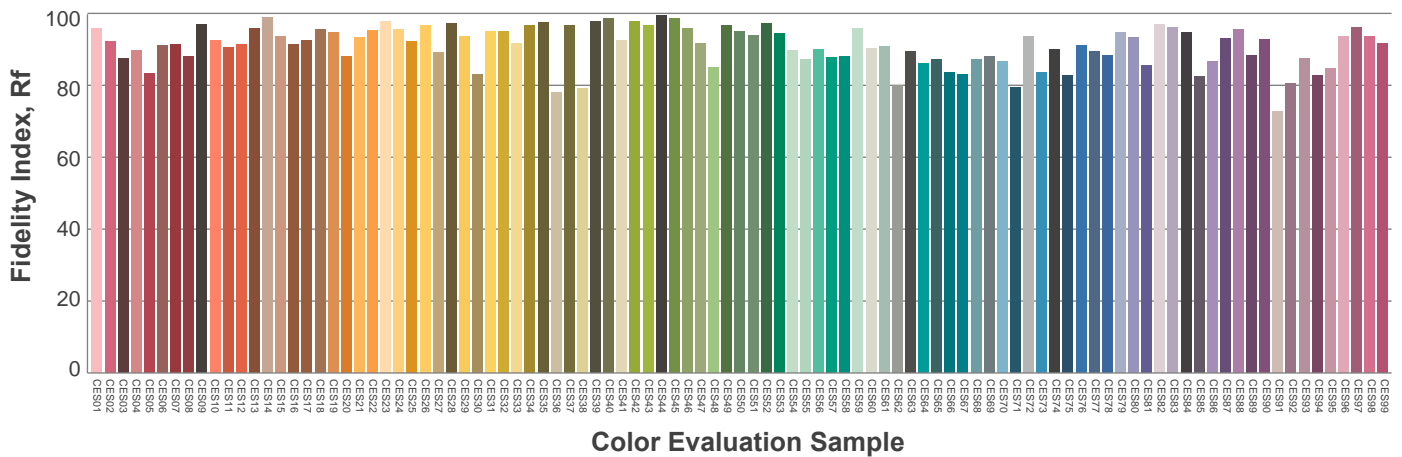
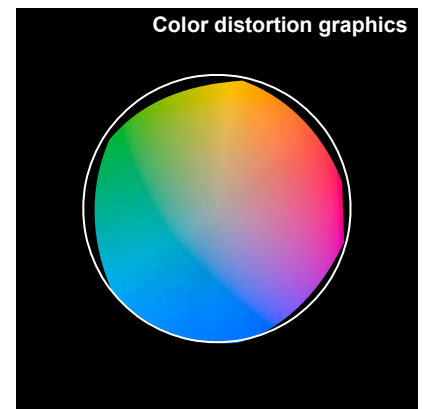
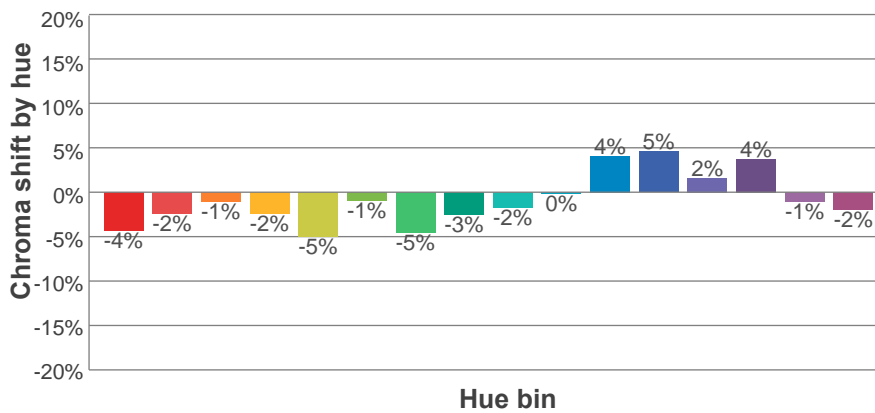
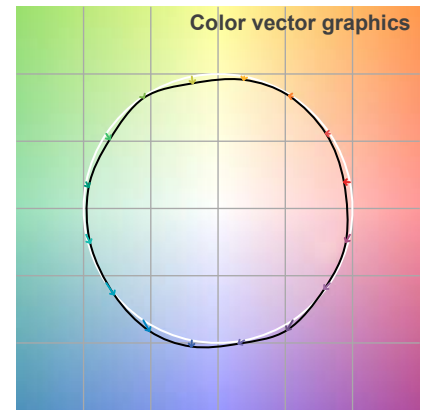
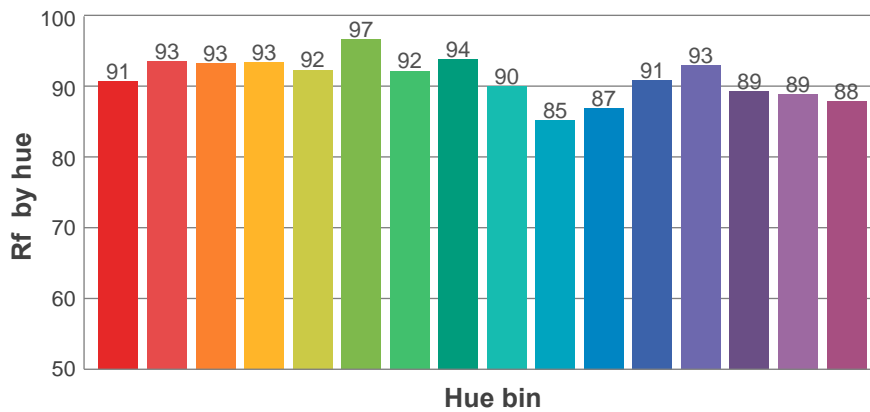
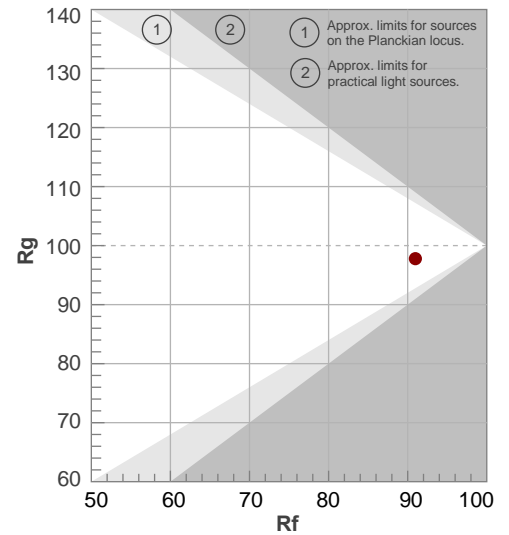
**Rf 91.0**

Fidelity index Rf

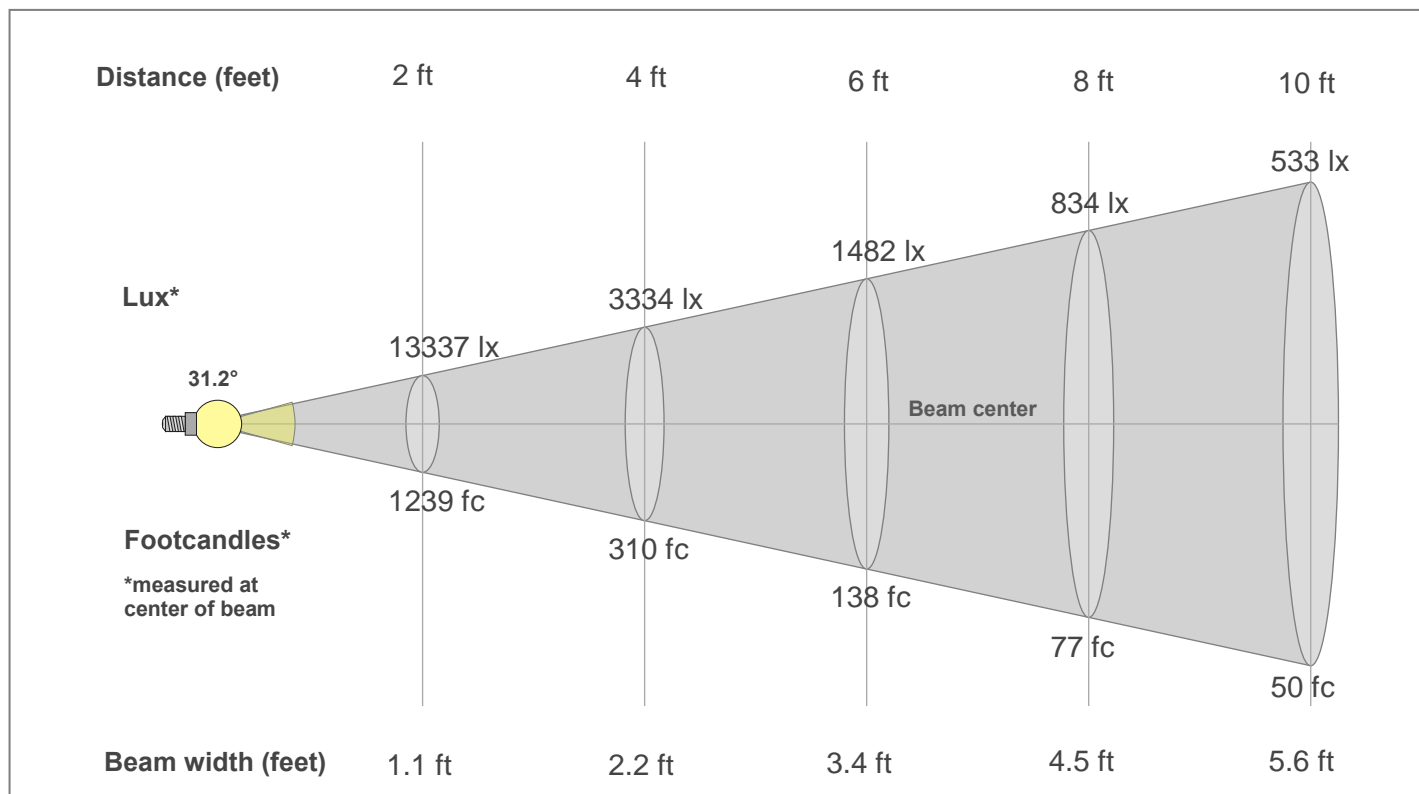
**Rg 97.8**

Gamut index Rg

Hue Bin	R <sub>f</sub>	Shifts (%)	
		Chroma	Hue
1	91	-4%	1%
2	93	-2%	2%
3	93	-1%	3%
4	93	-2%	0%
5	92	-5%	0%
6	97	-1%	0%
7	92	-5%	2%
8	94	-3%	3%
9	90	-2%	7%
10	85	0%	10%
11	87	4%	8%
12	91	5%	1%
13	93	2%	-5%
14	89	4%	-8%
15	89	-1%	-6%
16	88	-2%	-6%



## Beam Details



### Beam Intensities from 1-20m

1m	2m	3m	4m	5m	6m	7m	8m	9m	10m	11m	12m	13m	14m	15m	16m	17m	18m	19m	20m
3.3ft	6.6ft	9.8ft	13.1ft	16.4ft	19.7ft	23ft	26.2ft	29.5ft	32.8ft	36.1ft	39.4ft	42.7ft	45.9ft	49.2ft	52.5ft	55.8ft	59.1ft	62.3ft	65.6ft
4956lx	1239lx	551lx	310lx	198lx	138lx	101lx	77lx	61lx	50lx	41lx	34lx	29lx	25lx	22lx	19lx	17lx	15lx	14lx	12lx
460.5fc	115.1fc	51.2fc	28.8fc	18.4fc	12.8fc	9.4fc	7.2fc	5.7fc	4.6fc	3.8fc	3.2fc	2.7fc	2.3fc	2fc	1.8fc	1.6fc	1.4fc	1.3fc	1.2fc

### Intensities in 0° c-plane

0°	2°	4°	6°	8°	10°	12°	14°	16°	18°	20°	22°	24°	26°	28°	30°	32°	34°	36°	38°
4956	4916	4782	4564	4264	3884	3428	2917	2377	1854	1396	1030	762	571	438	340	265	203	152	110
100%	99%	96%	92%	86%	78%	69%	59%	48%	37%	28%	21%	15%	12%	9%	7%	5%	4%	3%	2%

### Intensities in 90° c-plane

0°	2°	4°	6°	8°	10°	12°	14°	16°	18°	20°	22°	24°	26°	28°	30°	32°	34°	36°	38°
4956	4916	4782	4564	4264	3884	3428	2917	2377	1854	1396	1030	762	571	438	340	265	203	152	110
100%	99%	96%	92%	86%	78%	69%	59%	48%	37%	28%	21%	15%	12%	9%	7%	5%	4%	3%	2%

### Intensities in 180° c-plane

0°	2°	4°	6°	8°	10°	12°	14°	16°	18°	20°	22°	24°	26°	28°	30°	32°	34°	36°	38°
4956	4916	4782	4564	4264	3884	3428	2917	2377	1854	1396	1030	762	571	438	340	265	203	152	110
100%	99%	96%	92%	86%	78%	69%	59%	48%	37%	28%	21%	15%	12%	9%	7%	5%	4%	3%	2%

### Intensities in 270° c-plane

0°	2°	4°	6°	8°	10°	12°	14°	16°	18°	20°	22°	24°	26°	28°	30°	32°	34°	36°	38°
4956	4916	4782	4564	4264	3884	3428	2917	2377	1854	1396	1030	762	571	438	340	265	203	152	110
100%	99%	96%	92%	86%	78%	69%	59%	48%	37%	28%	21%	15%	12%	9%	7%	5%	4%	3%	2%

Beam angle 50%	Field angle 10%	Cut-off angle 2.5%	Intensity ratio in 120°	Intensity ratio in 90°
31.2°	54.1°	74.6°	98.9%	97.8%