

Photometric / Colorimetric / Electric Report

Fixture Model:

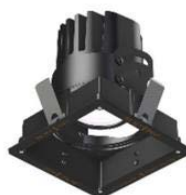
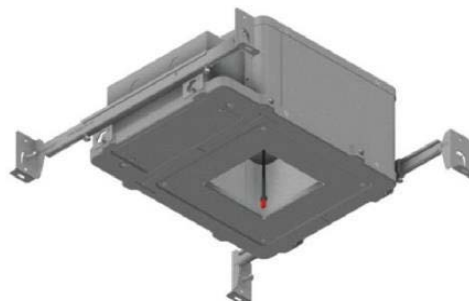
200-HD-IC-S-HI3500-40-EL1-2-HD-IC-FLS-2-WW-20d

Trim Model:

FLS-2-WW-WH

Date:

8/10/2022



Light efficiency:

68 Lumen/Watt

Light quality:

CRI: 94.7

Color temperature:

3443 K

CIE 1931:

x: 0.408
y: 0.389

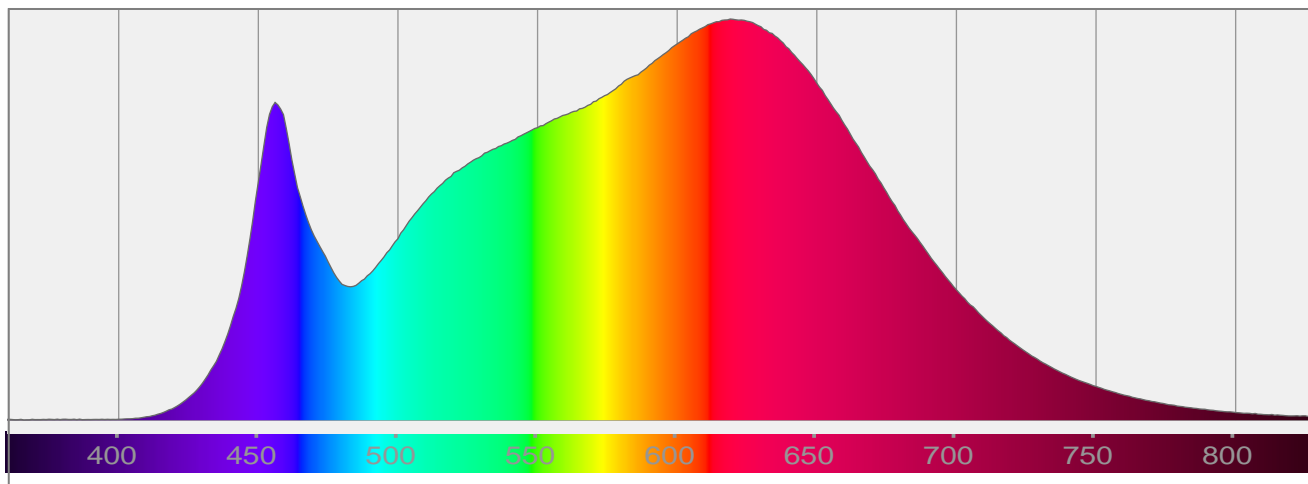
Output: 1330 lm

Peak: 1308 cd

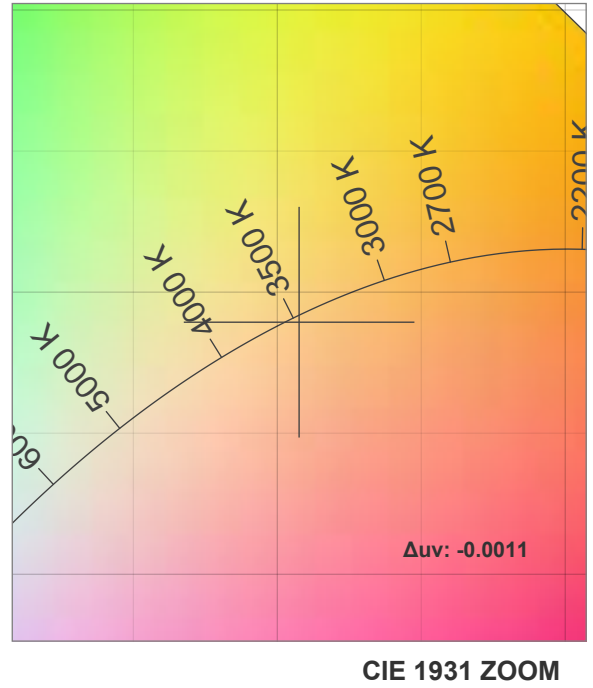
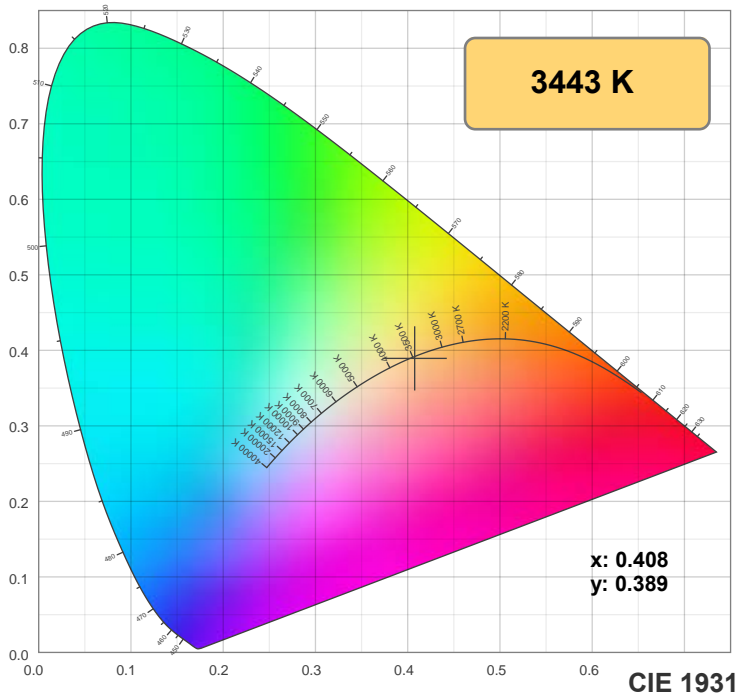
Power: 19.6 W

PF: 0.98

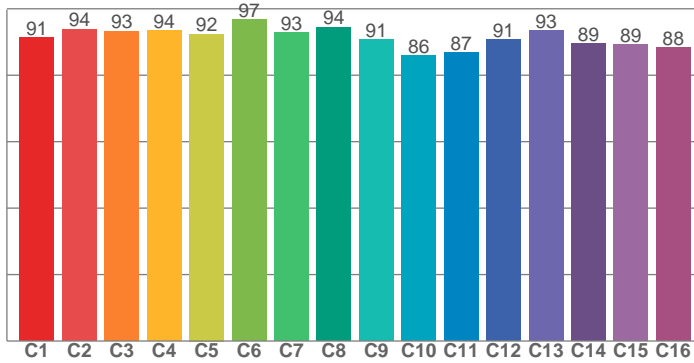
Spectra:



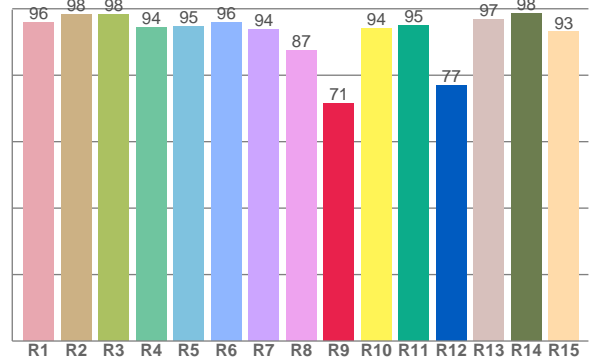
Color Details



TM-30: 91.3



CRI: 94.7 (R1-R8)



CRI R Values:

R1	R2	R3	R4	R5	R6	R7	R8	R9	R10	R11	R12	R13	R14	R15
95.8	98.2	98.2	94.4	94.6	95.7	93.7	87.4	71.4	93.9	95.0	77.0	96.9	98.5	93.0

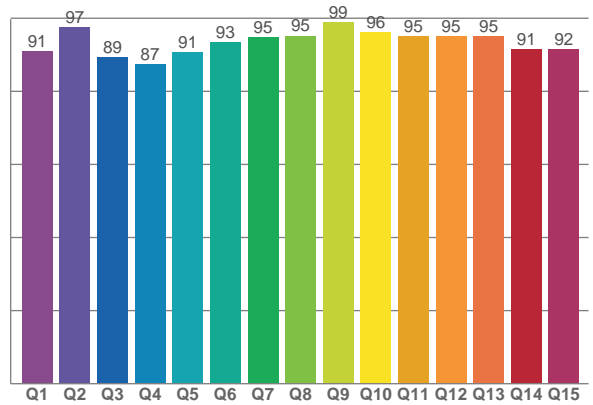
TM30 C Values:

C1	C2	C3	C4	C5	C6	C7	C8	C9	C10	C11	C12	C13	C14	C15	C16
91.2	93.9	93.3	93.5	92.4	96.8	92.8	94.5	90.7	85.8	86.7	90.7	93.3	89.4	89.2	88.2

CQS Q values:

Q1	Q2	Q3	Q4	Q5	Q6	Q7	Q8	Q9	Q10	Q11	Q12	Q13	Q14	Q15
91.1	97.5	89.3	87.5	90.8	93.4	94.8	95.2	98.9	96.1	95.2	95.0	95.1	91.4	91.5

CQS: 92.8



Color Parameters:

CCT	CRI	CRI R9	TM30 Rf	TM30 Rg	CQS	x	y	u	v	Δuv
3443 K	94.7	71.4	91.3	98.2	92.8	0.408	0.389	0.238	0.341	-0.0011

TM-30 Details

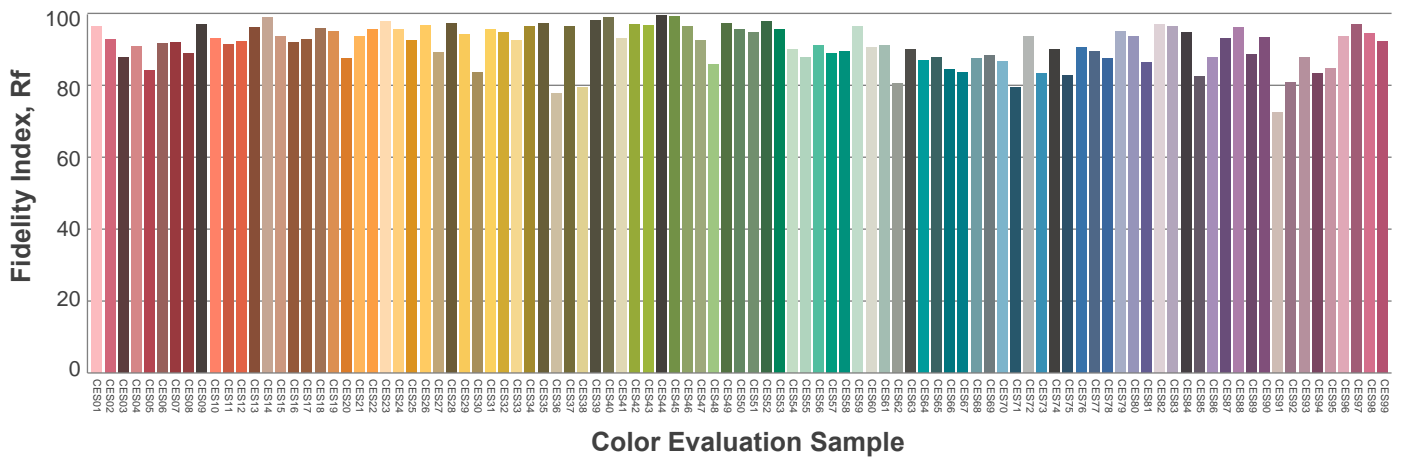
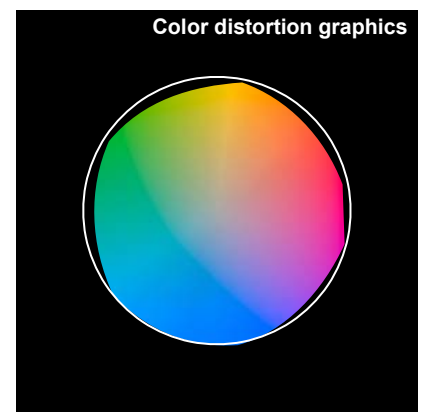
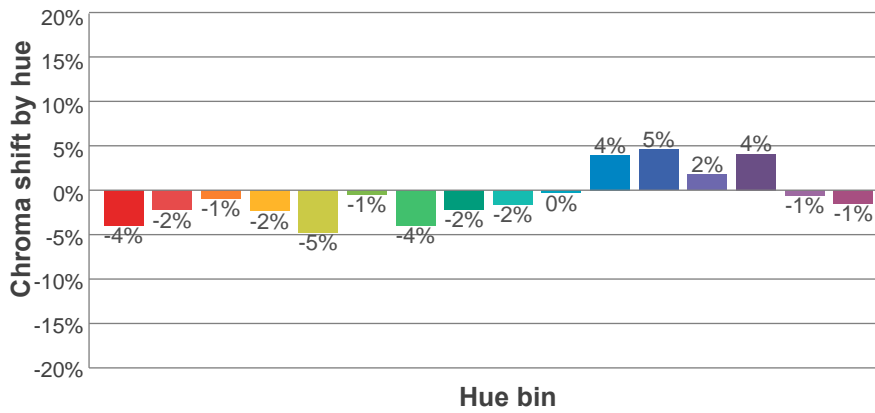
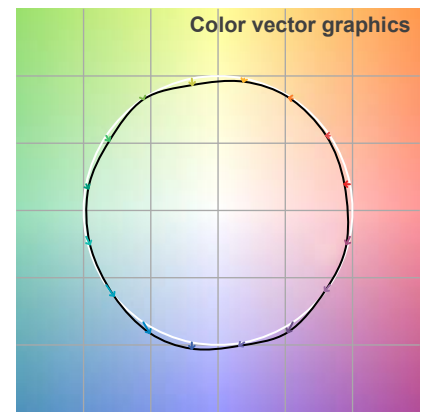
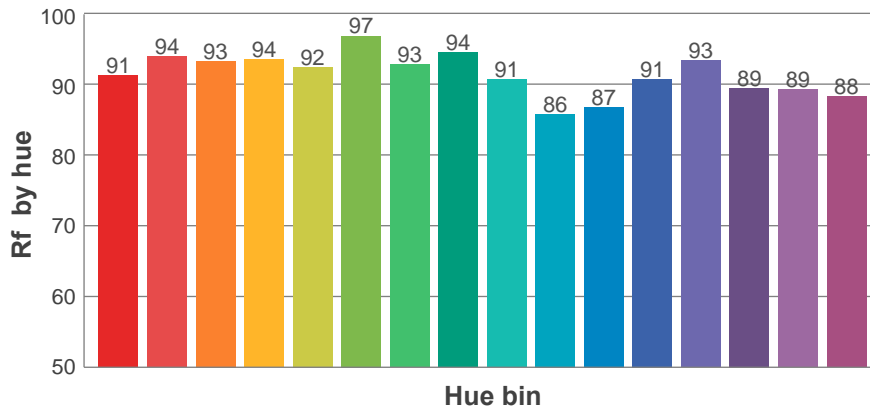
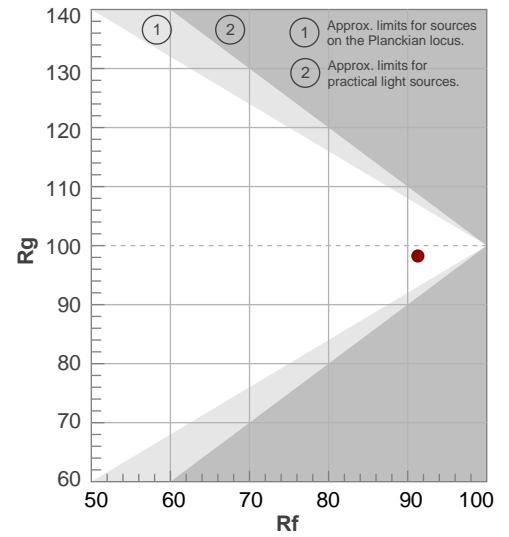
Rf 91.3

Fidelity index Rf

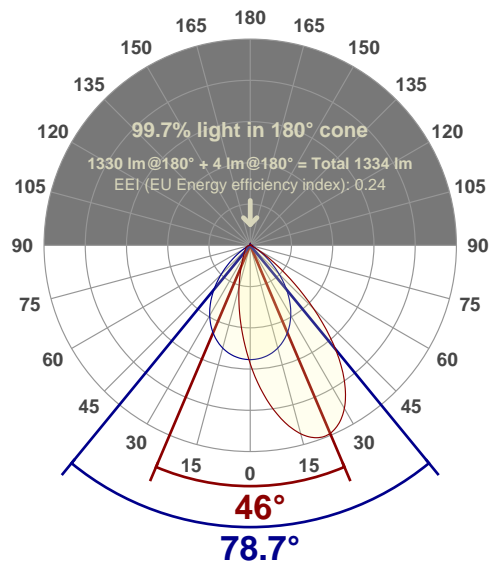
Rg 98.2

Gamut index Rg

Hue Bin	R _f	Shifts (%)	
		Chroma	Hue
1	91	-4%	1%
2	94	-2%	2%
3	93	-1%	3%
4	94	-2%	0%
5	92	-5%	1%
6	97	-1%	0%
7	93	-4%	2%
8	94	-2%	3%
9	91	-2%	6%
10	86	0%	10%
11	87	4%	8%
12	91	5%	1%
13	93	2%	-4%
14	89	4%	-7%
15	89	-1%	-6%
16	88	-1%	-6%



Angular Distribution Through 0° and 90° Planes



Beam Angle: 78.7°W x 46°L

Beam Details

