

Photometric / Colorimetric / Electric Report

Fixture Model:

200-HD-IC-R-HI3500-25-EL1-2-HD-IC-FLR-2-BV-30d

Trim Model:

FLR-2-BV-WH

Date:

8/22/2022



Light efficiency:

60 Lumen/Watt

Light quality:

CRI: 94.8

Color temperature:

3457 K

CIE 1931:

x: 0.407
y: 0.389

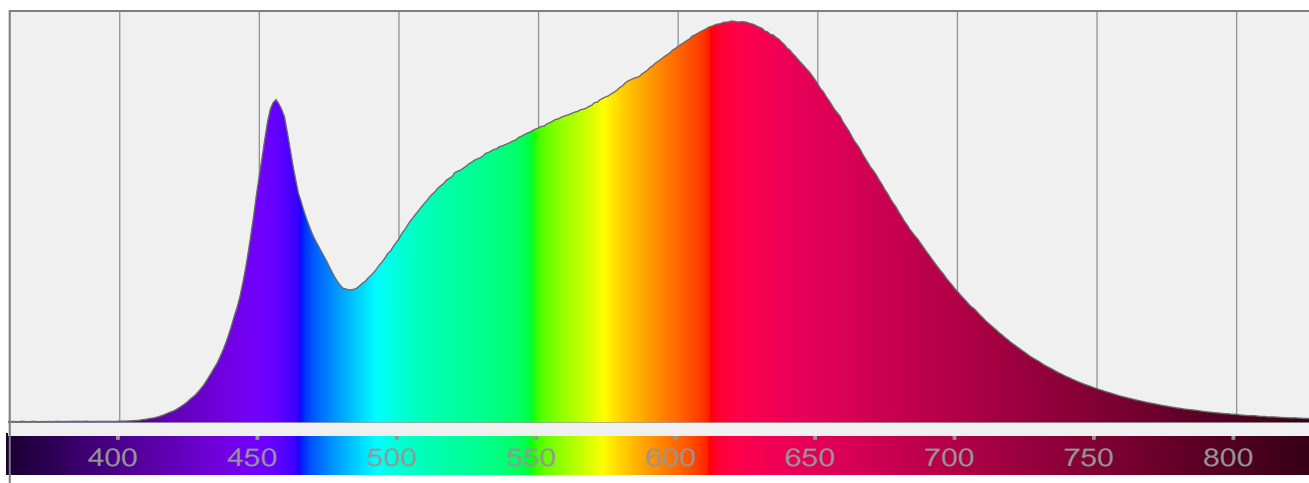
Output: 1178 lm

Peak: 4040 cd

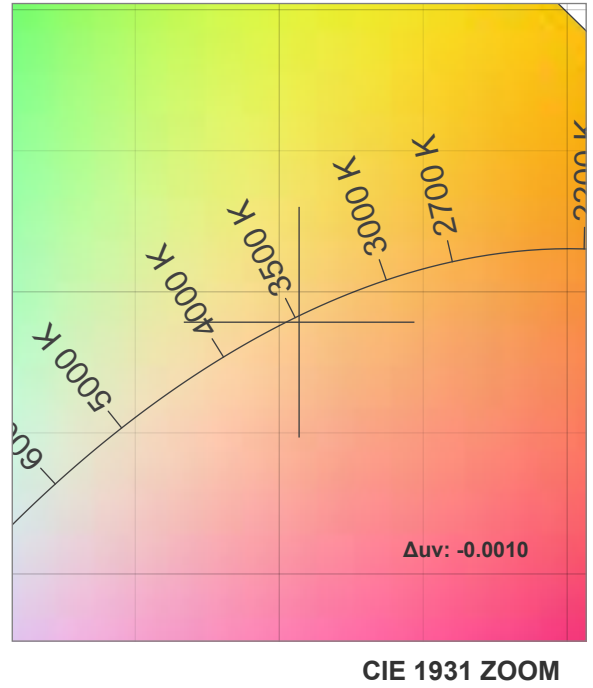
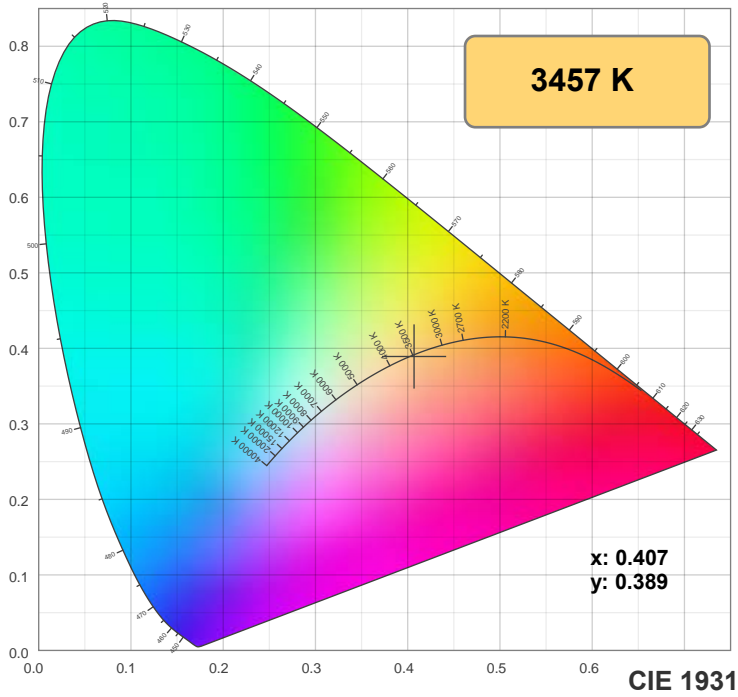
Power: 19.6 W

PF: 0.98

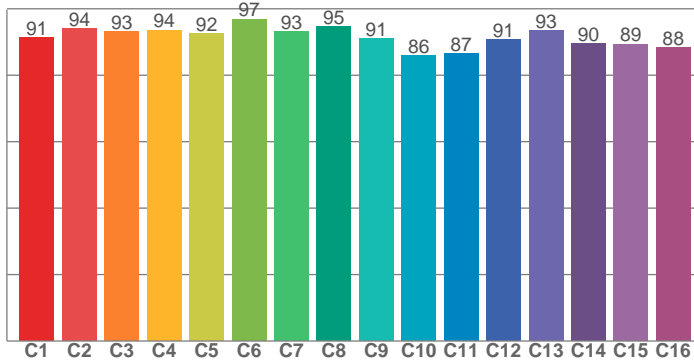
Spectra:



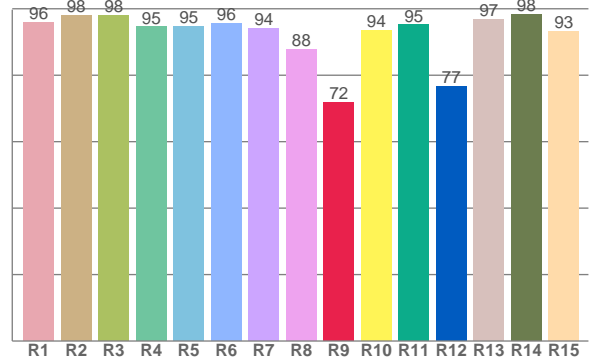
Color Details



TM-30: 91.4



CRI: 94.8 (R1-R8)



CRI R Values:

R1	R2	R3	R4	R5	R6	R7	R8	R9	R10	R11	R12	R13	R14	R15
95.8	98.0	97.9	94.5	94.6	95.6	94.0	87.7	71.8	93.6	95.1	76.7	96.8	98.3	93.1

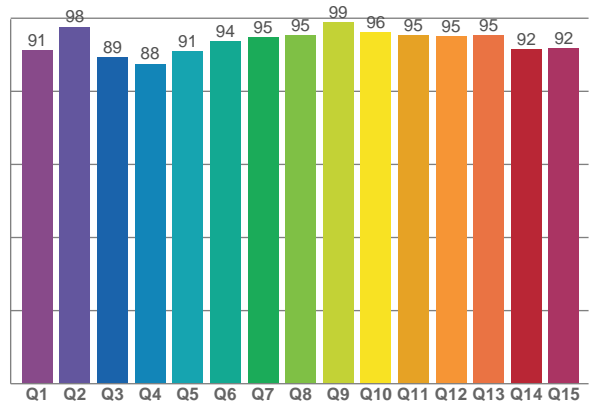
TM30 C Values:

C1	C2	C3	C4	C5	C6	C7	C8	C9	C10	C11	C12	C13	C14	C15	C16
91.4	94.0	93.2	93.6	92.5	96.9	93.0	94.7	90.9	86.0	86.6	90.7	93.5	89.5	89.4	88.3

CQS Q values:

Q1	Q2	Q3	Q4	Q5	Q6	Q7	Q8	Q9	Q10	Q11	Q12	Q13	Q14	Q15
91.4	97.7	89.2	87.5	91.1	93.7	94.8	95.3	98.9	96.1	95.3	95.2	95.3	91.6	91.7

CQS: 92.9



Color Parameters:

CCT	CRI	CRI R9	TM30 Rf	TM30 Rg	CQS	x	y	u	v	Δuv
3457 K	94.8	71.8	91.4	98.4	92.9	0.407	0.389	0.237	0.341	-0.0010

TM-30 Details

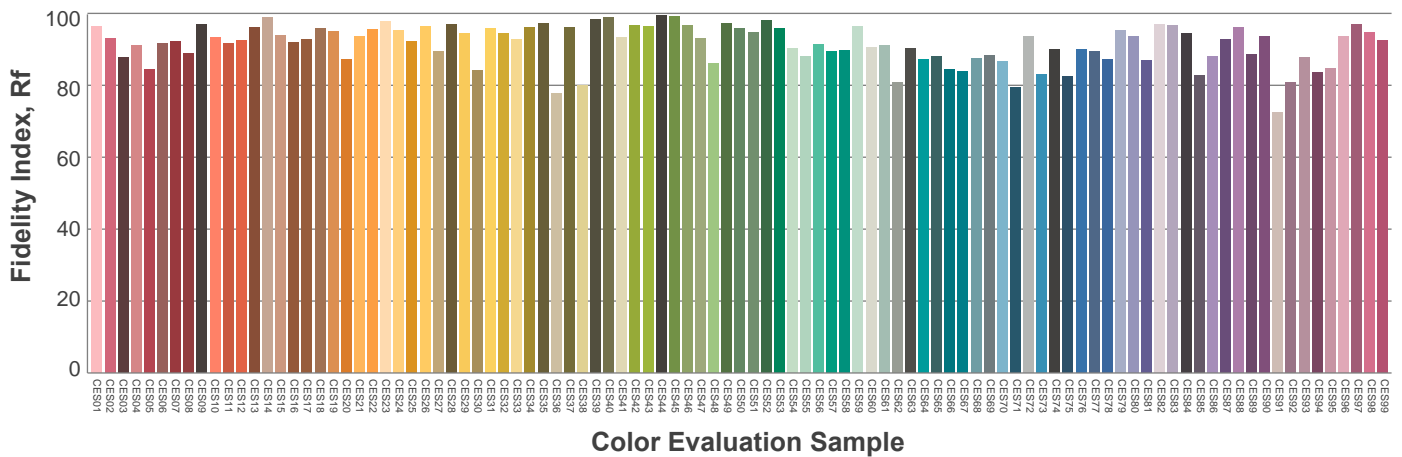
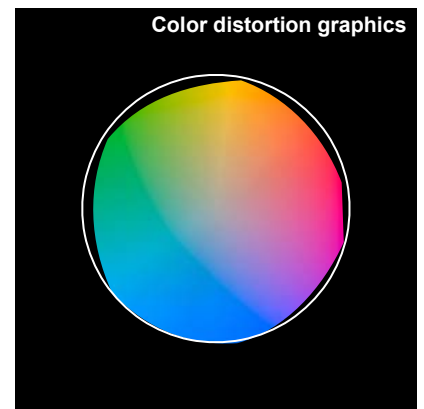
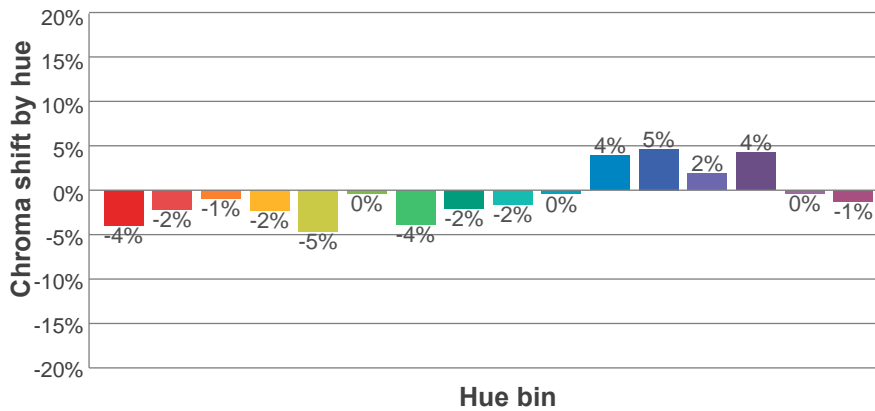
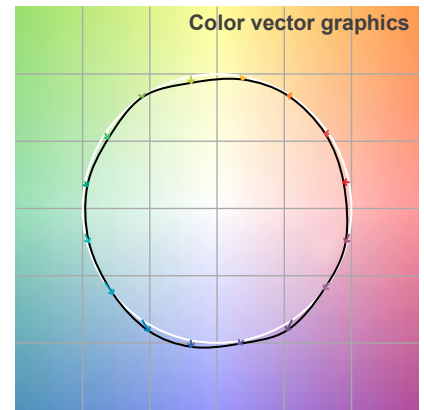
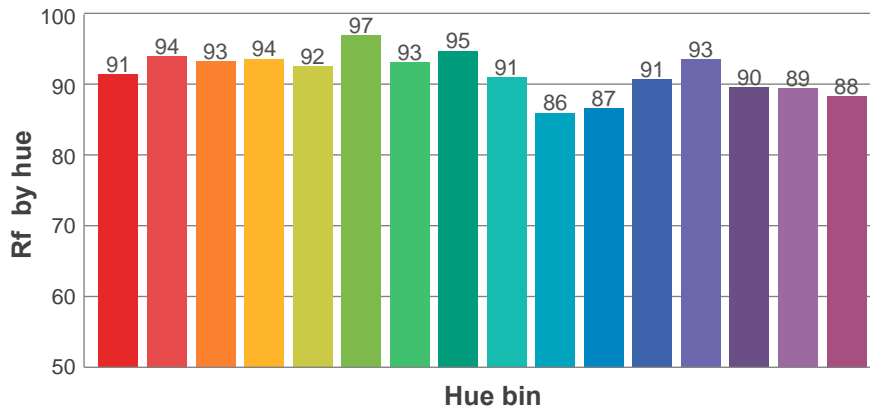
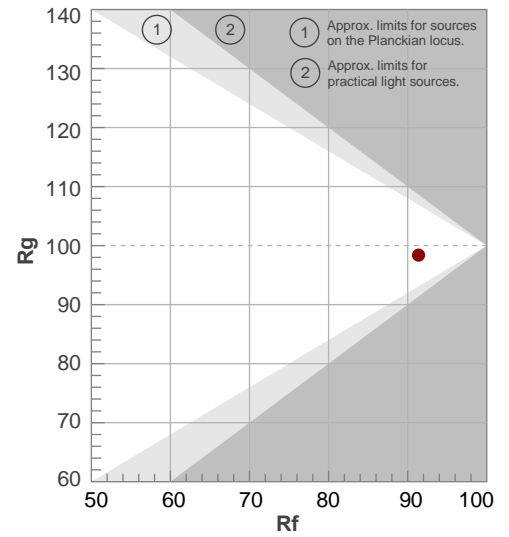
Rf 91.4

Fidelity index Rf

Rg 98.4

Gamut index Rg

Hue Bin	R _f	Shifts (%)	
		Chroma	Hue
1	91	-4%	1%
2	94	-2%	2%
3	93	-1%	3%
4	94	-2%	0%
5	92	-5%	1%
6	97	0%	0%
7	93	-4%	2%
8	95	-2%	3%
9	91	-2%	6%
10	86	0%	10%
11	87	4%	8%
12	91	5%	1%
13	93	2%	-4%
14	90	4%	-7%
15	89	0%	-6%
16	88	-1%	-6%



Aiming Angle

