

Photometric / Colorimetric / Electric Report

Fixture Model:

200-HD-IC-R-HI3500-60-EL1-2-HD-IC-FLR-2

Trim Model:

FLR-2-WH

Date:

8/10/2022



Light efficiency:

50 Lumen/Watt

Light quality:

CRI: 94.8

Color temperature:

3456 K

CIE 1931:

x: 0.407
y: 0.389

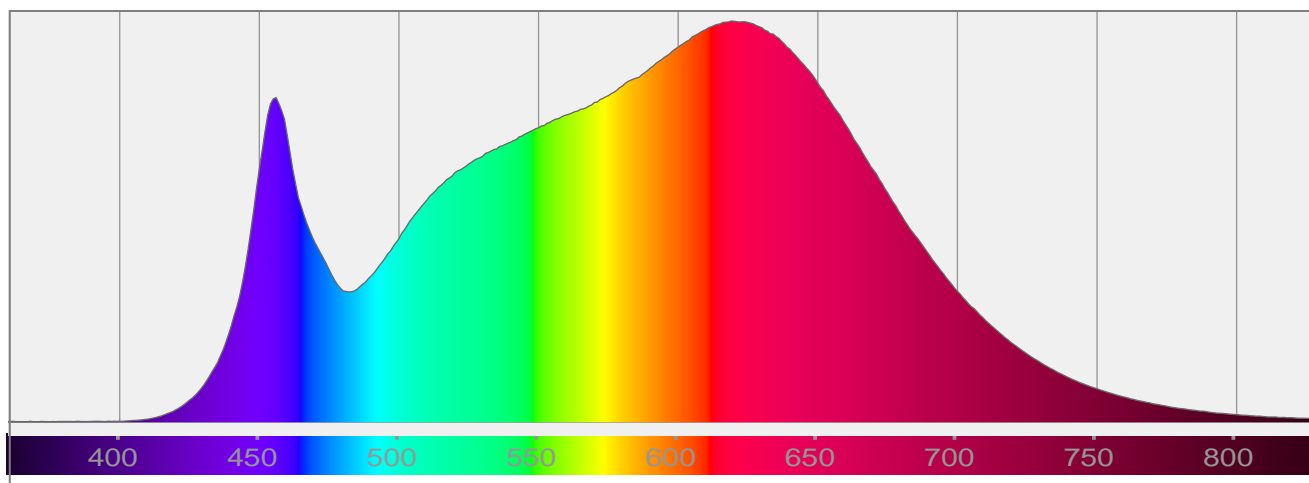
Output: 978 lm

Peak: 1668 cd

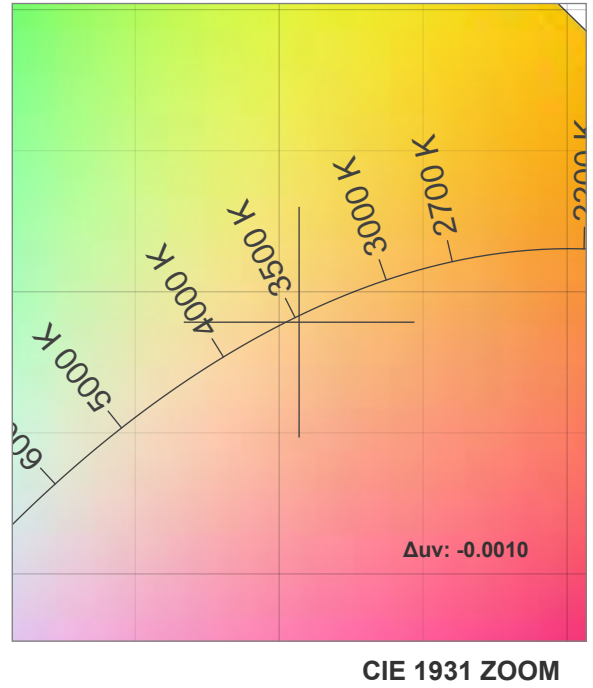
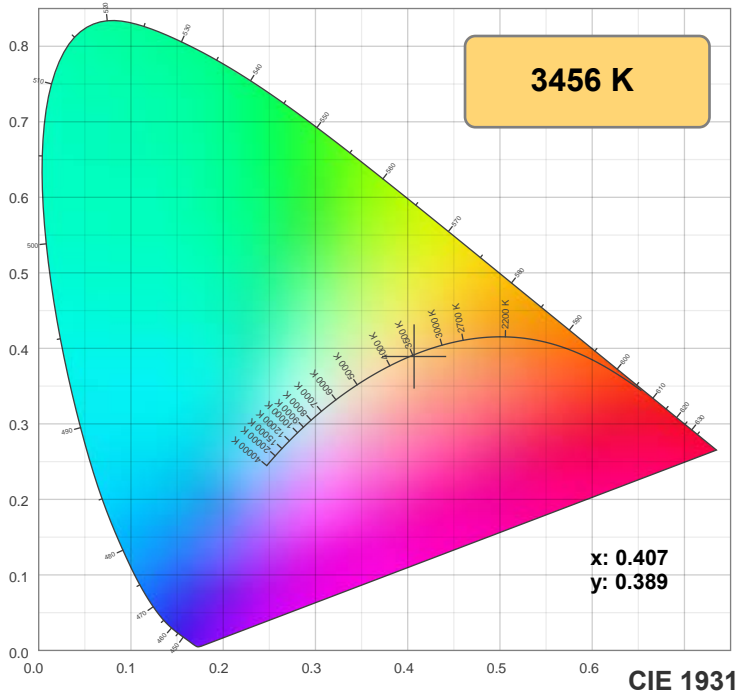
Power: 19.5 W

PF: 0.98

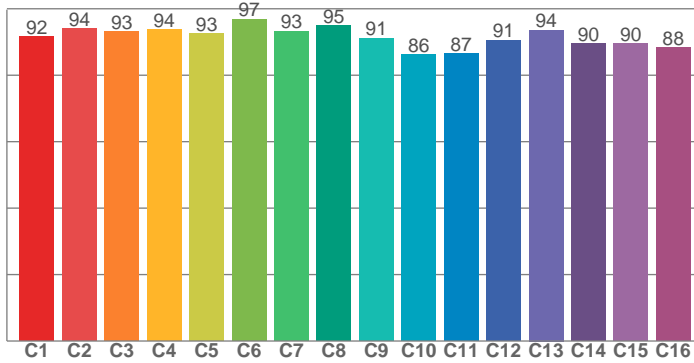
Spectra:



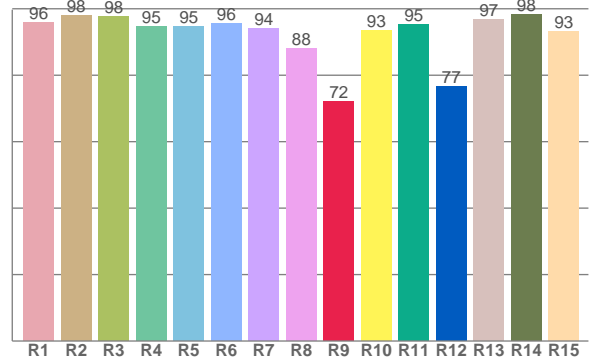
Color Details



TM-30: 91.5



CRI: 94.8 (R1-R8)



CRI R Values:

R1	R2	R3	R4	R5	R6	R7	R8	R9	R10	R11	R12	R13	R14	R15
95.8	97.9	97.8	94.7	94.6	95.5	94.2	87.9	72.2	93.4	95.2	76.6	96.8	98.2	93.2

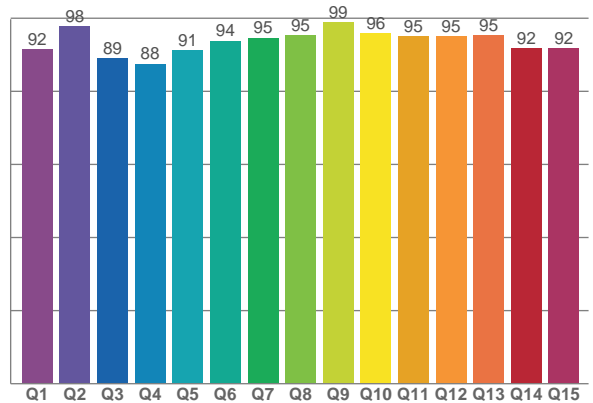
TM30 C Values:

C1	C2	C3	C4	C5	C6	C7	C8	C9	C10	C11	C12	C13	C14	C15	C16
91.5	94.0	93.1	93.7	92.5	96.9	93.3	94.9	91.2	86.1	86.5	90.6	93.6	89.6	89.5	88.4

CQS Q values:

Q1	Q2	Q3	Q4	Q5	Q6	Q7	Q8	Q9	Q10	Q11	Q12	Q13	Q14	Q15
91.6	97.8	89.0	87.5	91.2	93.8	94.7	95.3	98.9	96.0	95.2	95.1	95.3	91.7	91.9

CQS: 93.0



Color Parameters:

CCT	CRI	CRI R9	TM30 Rf	TM30 Rg	CQS	x	y	u	v	Δuv
3456 K	94.8	72.2	91.5	98.6	93.0	0.407	0.389	0.237	0.341	-0.0010

TM-30 Details

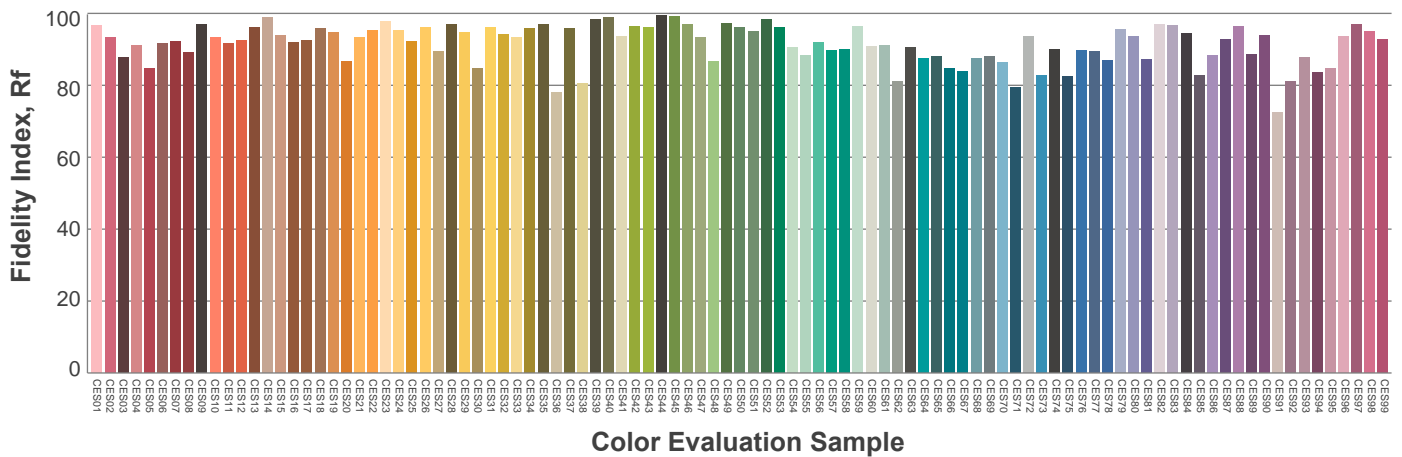
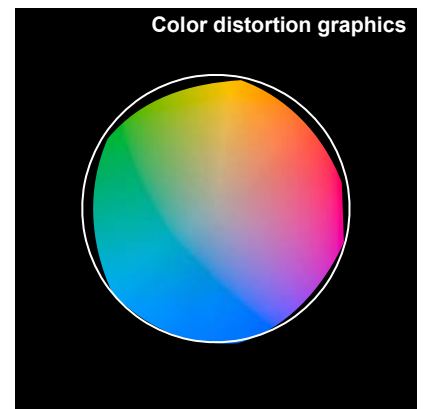
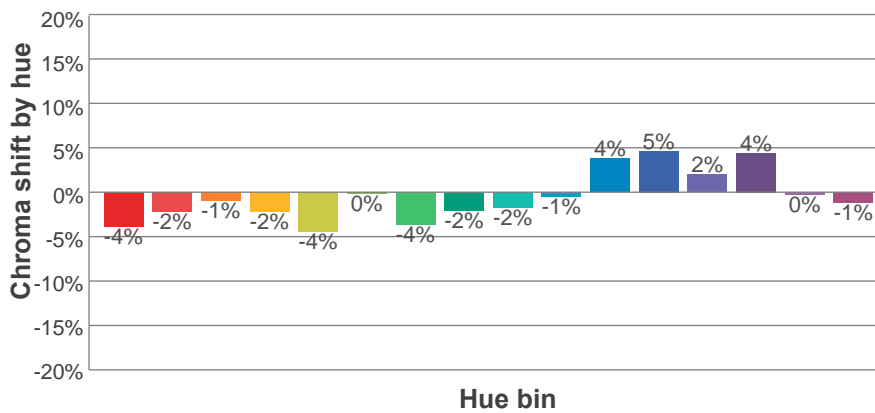
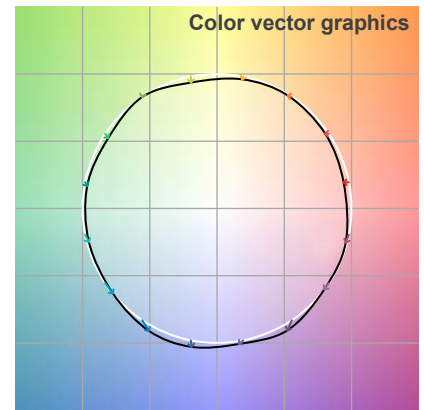
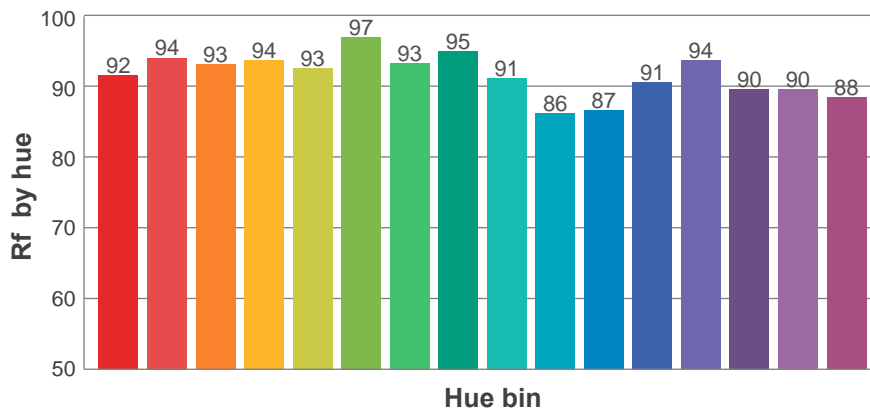
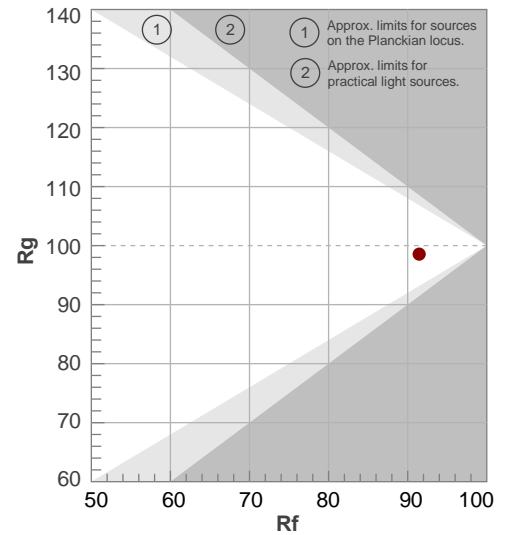
Rf 91.5

Fidelity index Rf

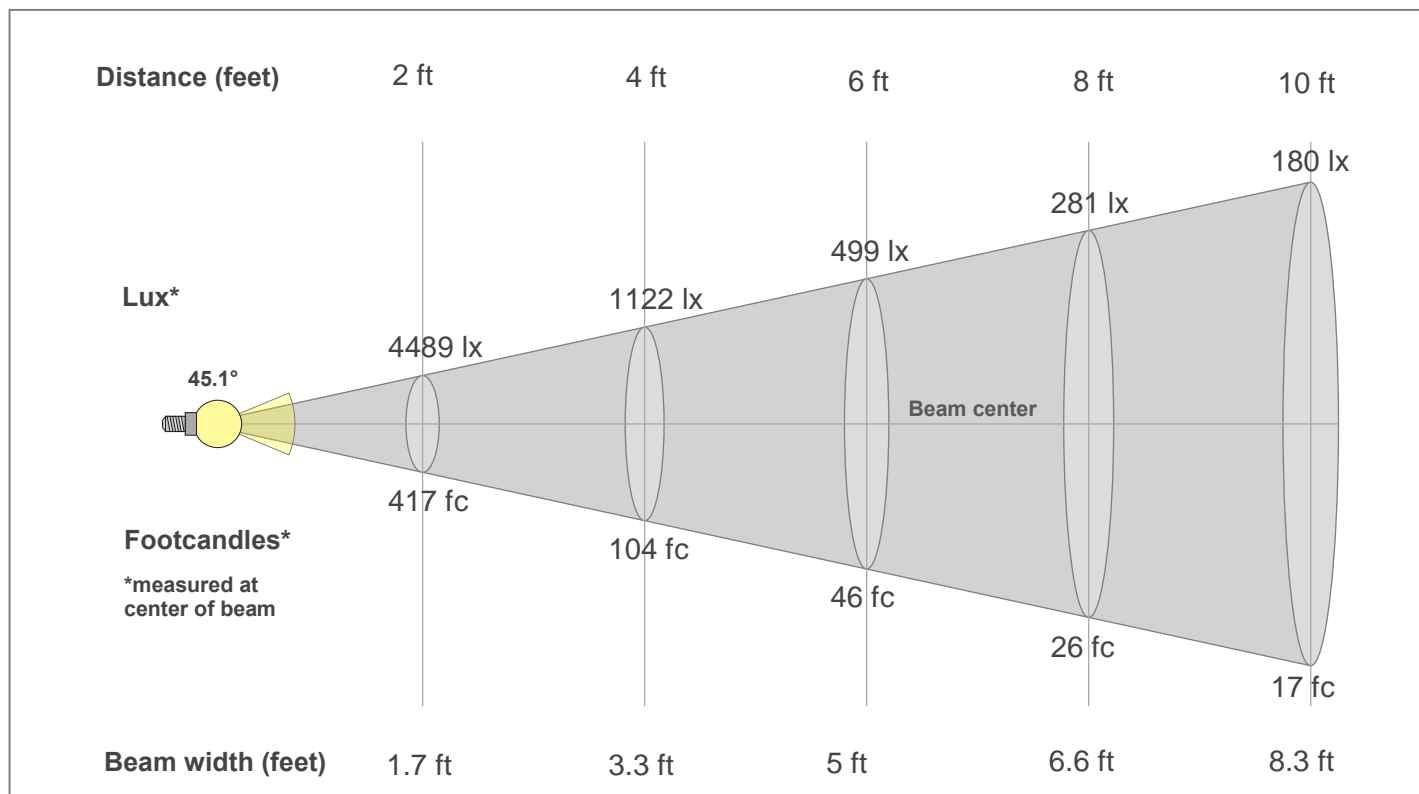
Rg 98.6

Gamut index Rg

Hue Bin	R _f	Shifts (%)	
		Chroma	Hue
1	92	-4%	1%
2	94	-2%	2%
3	93	-1%	3%
4	94	-2%	0%
5	93	-4%	1%
6	97	0%	0%
7	93	-4%	2%
8	95	-2%	2%
9	91	-2%	6%
10	86	-1%	9%
11	87	4%	8%
12	91	5%	1%
13	94	2%	-4%
14	90	4%	-7%
15	90	0%	-6%
16	88	-1%	-6%



Beam Details



Beam Intensities from 1-20m

1m	2m	3m	4m	5m	6m	7m	8m	9m	10m	11m	12m	13m	14m	15m	16m	17m	18m	19m	20m
3.3ft	6.6ft	9.8ft	13.1ft	16.4ft	19.7ft	23ft	26.2ft	29.5ft	32.8ft	36.1ft	39.4ft	42.7ft	45.9ft	49.2ft	52.5ft	55.8ft	59.1ft	62.3ft	65.6ft
1668lx	417lx	185lx	104lx	67lx	46lx	34lx	26lx	21lx	17lx	14lx	12lx	10lx	9lx	7lx	7lx	6lx	5lx	5lx	4lx
155fc	38.7fc	17.2fc	9.7fc	6.2fc	4.3fc	3.2fc	2.4fc	1.9fc	1.5fc	1.3fc	1.1fc	0.9fc	0.8fc	0.7fc	0.6fc	0.5fc	0.5fc	0.4fc	0.4fc

Intensities in 0° c-plane

0°	2°	4°	6°	8°	10°	12°	14°	16°	18°	20°	22°	24°	26°	28°	30°	32°	34°	36°	38°
1668	1668	1667	1662	1655	1649	1630	1596	1524	1368	1147	903	680	529	438	359	280	199	112	46
100%	100%	100%	100%	99%	99%	98%	96%	91%	82%	69%	54%	41%	32%	26%	22%	17%	12%	7%	3%

Intensities in 90° c-plane

0°	2°	4°	6°	8°	10°	12°	14°	16°	18°	20°	22°	24°	26°	28°	30°	32°	34°	36°	38°
1668	1668	1667	1662	1655	1649	1630	1596	1524	1368	1147	903	680	529	438	359	280	199	112	46
100%	100%	100%	100%	99%	99%	98%	96%	91%	82%	69%	54%	41%	32%	26%	22%	17%	12%	7%	3%

Intensities in 180° c-plane

0°	2°	4°	6°	8°	10°	12°	14°	16°	18°	20°	22°	24°	26°	28°	30°	32°	34°	36°	38°
1668	1668	1667	1662	1655	1649	1630	1596	1524	1368	1147	903	680	529	438	359	280	199	112	46
100%	100%	100%	100%	99%	99%	98%	96%	91%	82%	69%	54%	41%	32%	26%	22%	17%	12%	7%	3%

Intensities in 270° c-plane

0°	2°	4°	6°	8°	10°	12°	14°	16°	18°	20°	22°	24°	26°	28°	30°	32°	34°	36°	38°
1668	1668	1667	1662	1655	1649	1630	1596	1524	1368	1147	903	680	529	438	359	280	199	112	46
100%	100%	100%	100%	99%	99%	98%	96%	91%	82%	69%	54%	41%	32%	26%	22%	17%	12%	7%	3%

Beam angle 50%	Field angle 10%	Cut-off angle 2.5%	Intensity ratio in 120°	Intensity ratio in 90°
45.1°	69.6°	76.3°	99.5%	99.3%