



SUPERIOR LED LIGHTING SOLUTIONS TO FIT YOUR STYLE



# CREATED BY LIGHTING DESIGNERS FOR DESIGNERS

## Lighting Design Behind Every Fixture

We understand lighting because we've been illuminating exquisite environments for decades. It was a natural evolution for us to create a line of specification grade luminaires with unique built-in features that are superior in design, functionality, and flexibility to other lighting fixtures on the market.

## Sustainable Design/Modular Architecture

Our family of LED lighting fixtures, be it recessed or surface mount, are sustainably designed and include CA JA8 Title 24 Compliant lumen and driver packages, multiple beam spreads, 4000K, 3500K, 3000K, and 2700K Static White options, 3000-1800K and 2800-2200K Warm Dim options, and 4700-2200K Tunable White.



PRIVATE RESIDENCE - SAN FRANCISCO, CA  
Lighting Design: TDG  
Photo: Matthew Millman

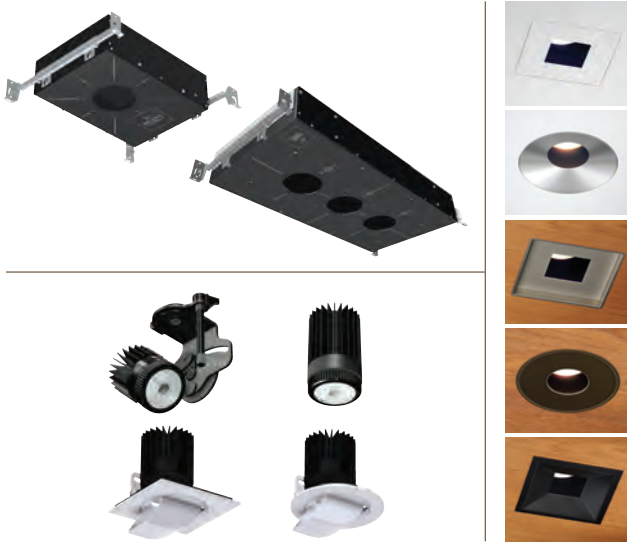


1111 2ND  
**NEXT UP**  
BUSINESS CENTER  
AND  
NEW OFFICES

# A FAMILY OF LED LIGHTING OPTIONS

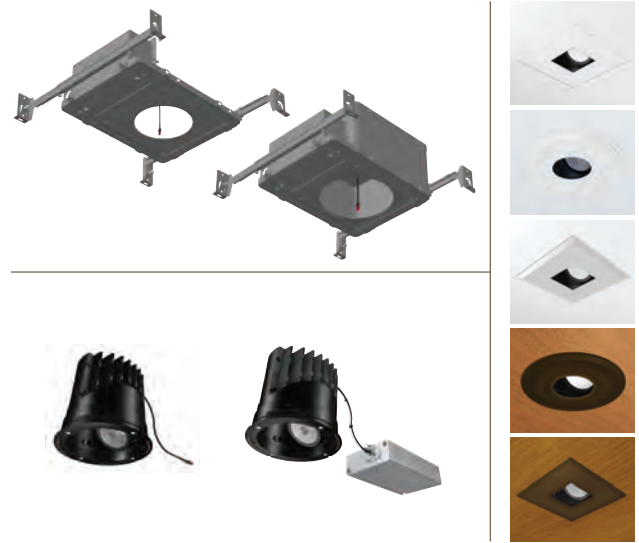
## 800 Series

The 800 Series features optical accessories to facilitate a dazzling design. With 30 beautiful trim styles in five designer finishes, 21 optical beam spread options, and 14 driver options to cover your needs, we offer single-lamp and multiple-lamp fixtures to transform your space into stunning illuminated environments.



## 400 Series

Need flexibility? We've got you covered! For new construction or remodel applications, the 400 Series is offered in integral or remote driver options with many of the same great features as the 800 Series. This fixture can accommodate up to 5-1/2" thick ceilings, proving there is little the 400 Series can't accomplish.



## 200/200-HD Series

Continuing our family of high-quality recessed fixtures, the 200 Series shines in its versatile use in new construction or remodel applications for residential, commercial, hospitality, and beyond! This feature-rich fixture offers integral and remote driver options in various emitter configurations and outputs—all at a great value.



## MPT2 Series

Our sleek, super adjustable Monopoint fixture is offered in four finishes, four different stem lengths, round or square canopies, and the same beam spread and color temperature options that make our product lines so well-rounded. The Monopoint fixture features integral and remote driver options and creates a lighting solution for even the most challenging environments.





DAVIS ESTATE WINERY - CALISTOGA, CA  
Lighting Design: Eric Johnson Associates  
Photo: Adrian Gregorutti

## HERE FOR YOU TODAY AND TOMORROW

### Personalized Customer Service

We know there are many choices when it comes to specified lighting products. In addition to the quality of our fixtures, we provide a high-level of timely support for every one of our products.

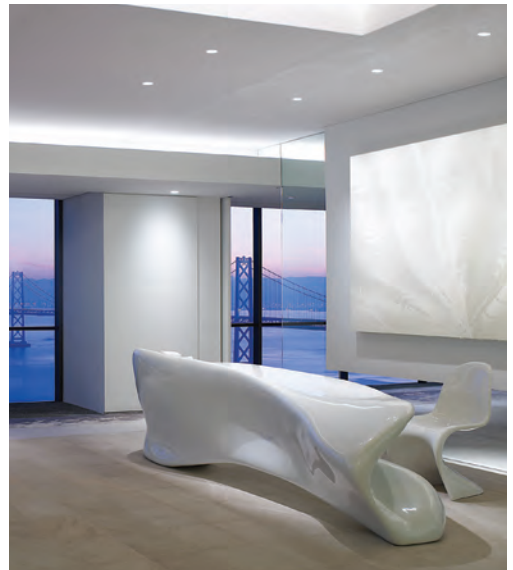
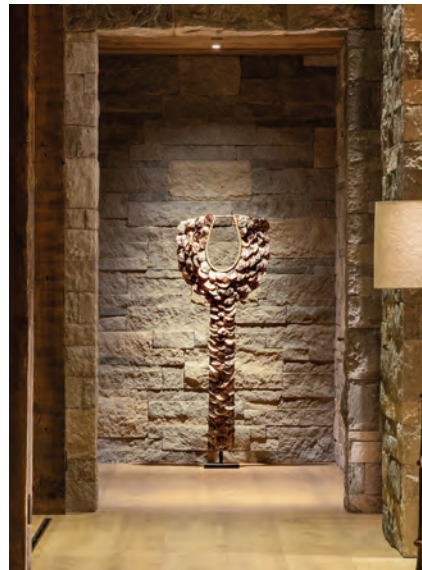
We are dedicated to providing the best customer service, technical support, and product knowledge that goes beyond installation. Throughout your project, we strive to earn your business. After all, we want a customer for life.



PRIVATE RESIDENCE - SAN FRANCISCO, CA  
 Lighting Design: TDG  
 Photo: Roger Davis



FRONT COVER:  
 SILVER OAK WINERY - HEALDSBURG, CA  
 Lighting Design: EJA  
 Photo: Patrik Argast



8lighting.com

526 PORTAL STREET • COTATI CA 94931 • P 707.794.0888 F 707.795.4379