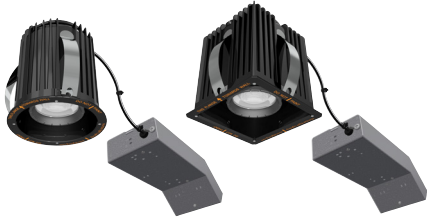


200 Series – Recessed LED

REMODEL



201-RM – FIXED POSITION LED

- Fixed position for general lighting applications
- Delivers up to 1265 lumens at 14 watts
- Four White LED options: 2700K, 3000K, 3500K, and 4000K 92+ CRI
- Two Warm Dim LED options: 3000-1800K 97+ CRI and 2800-2200K 95+ CRI
- Four interchangeable beam spreads: 15°, 25°, 40°, and 60°
- Five interchangeable beam enhancing lenses
- Eleven Integral and Two Remote Dimming Driver options
- Four flanged or flangeless trim options: 1-7/8" aperture Round and Square FLAT and 2-1/4" aperture Round and Square BEVEL
- Two trim finish options: White and Oil-Rubbed Bronze
- Type Non-IC/Airtight



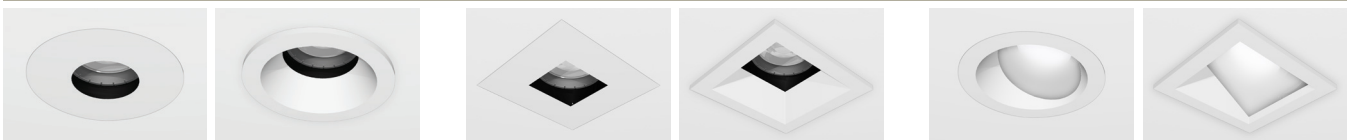
202-RM – ADJUSTABLE LED

- 0-30° adjustable for accent and general lighting applications
- Delivers up to 1232 lumens at 14 watts
- Four White LED options: 2700K, 3000K, 3500K, and 4000K 92+ CRI
- Two Warm Dim LED options: 3000-1800K 97+ CRI and 2800-2200K 95+ CRI
- Four interchangeable beam spreads: 15°, 25°, 40°, and 60°
- Five interchangeable beam enhancing lenses
- Eleven Integral and Two Remote Dimming Driver options
- Four flanged or flangeless trim options: 1-7/8" aperture Round and Square FLAT and 2-1/4" aperture Round and Square BEVEL
- Two trim finish options: White and Oil-Rubbed Bronze
- Type Non-IC/Airtight



203-RM – WALL WASH LED

- Fixed position for wall wash lighting applications
- Delivers up to 1059 lumens at 14 watts
- Four White LED options: 2700K, 3000K, 3500K, and 4000K 92+ CRI
- Two Warm Dim LED options: 3000-1800K 97+ CRI and 2800-2200K 95+ CRI
- Four interchangeable beam spreads: 15°, 25°, 40°, and 60°
- Five interchangeable beam enhancing lenses
- Eleven Integral and Two Remote Dimming Driver options
- Two flanged or flangeless trim options: 2-3/4" angle-cut aperture Round and Square WALL WASH
- Two trim finish options: White and Oil-Rubbed Bronze
- Type Non-IC/Airtight



526 Portal Street
Cotati, CA 94931
USA

P 707.794.0888
F 707.795.4379

www.8lighting.com

All No. 8 Lighting fixtures and components are UL/CSA listed. No. 8 Lighting trims and lamp modules are protected by one or more U.S. Patents. No. 8 Lighting reserves the right to change details of design, materials, and finish.

© 2022 No. 8 Lighting



02/2022

93002-02