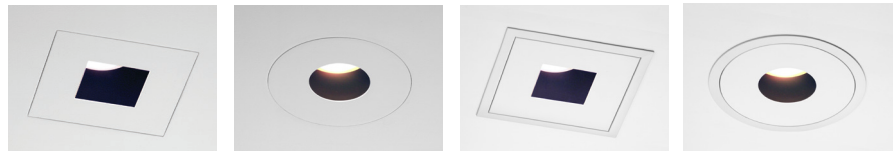
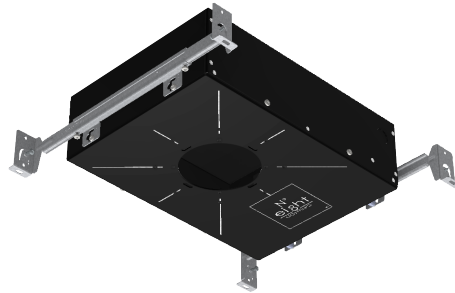


Tunable White LED

FEATURES

- Available with No.8 Lighting **800 Series** Model **804S/J2S-TW**
- Fully adjustable (0-45° vertical/360° horizontal) for general, accent, and wall wash* lighting applications (*with optional WW-8 wall wash accessory)
- 4500-2200K 92+ CRI Tunable White LED delivers up to 1133 lumens at 14.6 watts
- Four Dimming Driver Options: 0.1% EldoLED DALI, 0.1% EldoLED DMX, 0.1% EldoLED 0-10v, and 1% Lutron T-Series
- High lumen density for directional lighting with up to 7,570 CBCP
- Available optic options include: 15°, 25°, and 40°
- Consistent white light <3 SDCM
- 2019 CA JA8 Compliant
- Works with all **800 Series** trims

804S/J2S-TW - LOW-PROFILE RECESSED ADJUSTABLE

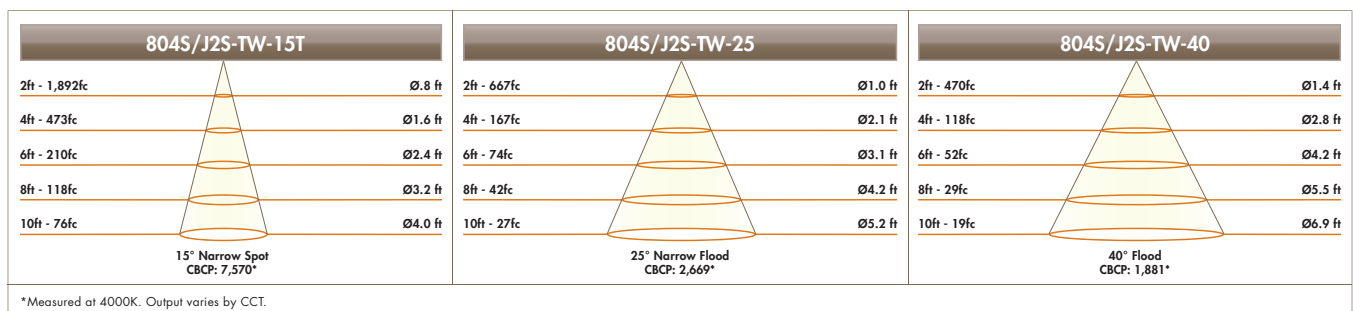


804S/J2S-TW PERFORMANCE SUMMARY

Correlated Color Temperature:	4500K	4000K	3500K	3000K	2700K	2200K
Color Rendering Index:	92	94	95	96	95	92
Wattage:	14.7	14.6	14.4	14.3	14.3	14.1
Delivered* Lumens:	1130	1133	1112	1034	975	817
Delivered* Lumens Per Watt:	77	78	77	72	68	58

*Based on 15° optic and 2.75" aperture trim. Performance varies for each specific beam spread and trim type.

804S/J2S-TW CONE OF LIGHT DIAGRAMS



526 Portal Street
Cotati, CA 94931
USA
P 707.794.0888
F 707.795-4379
www.8lighting.com

All No. 8 Lighting fixtures and components are UL/CSA listed. No. 8 Lighting trims and lamp modules are protected by one or more U.S. Patents. No. 8 Lighting reserves the right to change details of design, materials, and finish.
© 2020 No. 8 Lighting



09/2020

Tunable White LED Color Range

4500K-2200K at 100%



4500K

4000K

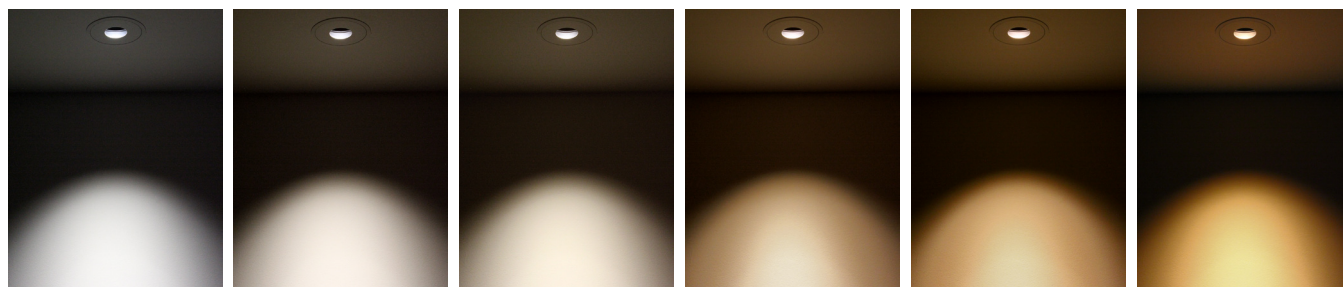
3500K

3000K

2700K

2200K

4500K-2200K at 1%



4500K

4000K

3500K

3000K

2700K

2200K



526 Portal Street
Cotati, CA 94931
USA

P 707.794.0888
F 707.795-4379

www.8lighting.com

All No. 8 Lighting fixtures and components are UL/CSA listed. No. 8 Lighting trims and lamp modules are protected by one or more U.S. Patents. No. 8 Lighting reserves the right to change details of design, materials, and finish.

© 2020 No. 8 Lighting



09/2020