

MPT2-RT MONOPOINT | LED SURFACE MOUNT 2-1/2" CANOPY

| | |
|--|------|
| Project Name | |
| Date | Type |
| Prepared By | |
| Comments | |
| Catalog # MPT2-RT- - - 6 - / - / - | |

PRODUCT FEATURES

Monopoint – Surface Mount 2-1/2" Canopy

- Die-cast aluminum construction with 2-1/2" SQUARE or ROUND canopy for remote mounted LED driver.
- Features integrated snoot with 1/2" beveled regress for glare control.
- 6-1/4" Overall length. Ceiling or wall mountable.
- Available in many designer finishes including: **WH**-White, **SA**-Satin Aluminum, **OB**-Oil-Rubbed Bronze, and **BK**-Black.
- Rotates 320° and tilts 110°.
- UL damp listed (covered ceiling/wall applications). Not for wet locations.

LED Options

- **HI** 3000K 92+ CRI White LED. Minimum 2-Step color binning.
 - **HI-2** 3000K 92+ CRI White LED. Minimum 2-Step color binning. Note: For use with 10° optic option only.
 - **WD** 3000-1800K 97+ CRI Warm Dim LED. Minimum 3-Step color binning.
 - **WD-2** 2800-2200K 95+ CRI Warm Dim LED. Minimum 3-Step color binning.
 - Optic options include: 10°, 15°, 25°, and 40°. Note: 10° optic option for use with **HI-2** LED option only.
- Note: To ensure fixture to fixture color consistency, use of the same LED option with adjacent fixtures is recommended.

Optical Accessories (Optional)*

- **HEX** - Hex-cell louver
 - Field interchangeable beam enhancing lenses include: **NSP**-Narrow Softening, **NFL**-Medium Softening, **FL**-Wide Softening, **WFL**-Extra Wide Softening, and **LS**-Linear Spread. See Page 2 for details.
 - Field interchangeable color filtering lenses include: **CF24**-2400°K, **CF27**-2700°K, & **CF35**-3500°K.
- *Up to three optical accessories can be accommodated.

Dimming Options

- **LU1R-M2** Remote Lutron Hi-lume **LTEA2W** 1% 2-wire LED driver (120 V forward phase only). 120v/60Hz input.
- **LU2R-M2** Remote Lutron Hi-lume **LDE1** 1% EcoSystem LED driver with Soft-on, Fade-to-Black. 120-277v/60Hz input.

Note: Remote mounted LED driver can be mounted up to 100ft from fixture using 12AWG Class 2 stranded wire. See wire length table.

| Maximum Driver-to-LED Light Engine Wire Length | | |
|--|----------------------------|--------------------------------|
| Driver Model | | Wire Gauge |
| LU1R/LU2R-700 + LU1R/LU2R-1000-WD | LU1R/LU2R-1000 + LU1R-1400 | |
| 8 ft (2.5 m) | 4 ft (1.2 m) | 24 AWG (0.2 mm ²) |
| 13 ft (4 m) | 6 ft (1.8 m) | 22 AWG (0.34 mm ²) |
| 20 ft (6 m) | 10 ft (3 m) | 20 AWG (0.5 mm ²) |
| 30 ft (9 m) | 15 ft (4.5 m) | 18 AWG (.75 mm ²) |
| 35 ft (10.5 m) | 25 ft (7.5 m) | 16 AWG (1.5 mm ²) |
| 50 ft (15 m) | 40 ft (12 m) | 14 AWG (2.5 mm ²) |
| 100 ft (30 m) | 60 ft (18 m) | 12 AWG (4.0 mm ²) |

Wire Type: Stranded Class 2 wire (supplied by others)


Output

- **700** Low output. Delivers up to 840 lumens.
- **1000** Standard output. Delivers up to 1088 lumens.
- **1000-WD** Standard output - Warm Dimming. Delivers up to 875 lumens.
- **1400** High output. Delivers up to 1108 lumens.

For photometric files in PDF and IES formats, see 8lighting.com/mp12-series

Ambient temperatures adjacent to fixture should not exceed 40°C (104°F) during normal operation. Ambient temperatures adjacent to remote mounted drivers should not exceed 25°C (77°F).


JAB-2019 CA Title 24 Compliant.



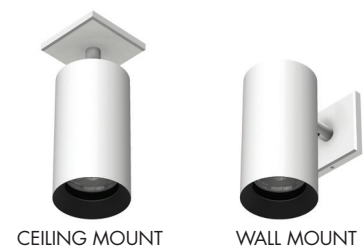
526 Portal Street
Cotati, CA 94931
USA
P 707.794.0888
F 707.795.4379
www.8lighting.com

All No. 8 Lighting fixtures and components are UL/CSA listed. No. 8 Lighting trims and lamp modules are protected by one or more U.S. Patents. No. 8 Lighting reserves the right to change details of design, materials, and finish.

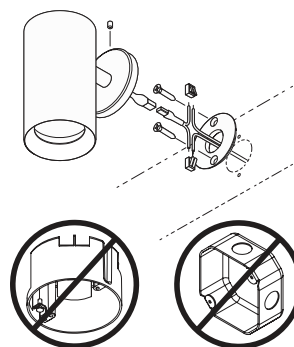
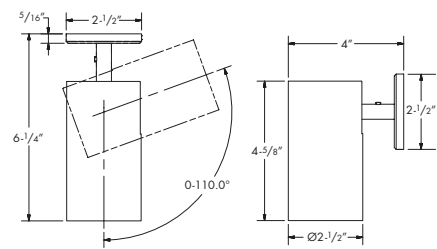
© 2020 No. 8 Lighting
Doc # 91202-12.3



MPT2-RT-S



MPT2-RT-R



INSTALLATION NOTE:

Must attach to suitable blocking to support the installation. Allow sufficient space for low voltage connections at back of fixture canopy. Fixture does not install to a JBox or standard mud ring.

PRODUCT SPECIFIER/PRODUCT ORDER NUMBER

MPT2-RT-

6

MONOPOINT SURFACE MOUNT - LED OPTIONS - OVERALL LENGTH* - FINISH / OPTIC OPTIONS - OPTICAL ACCESSORIES / DIMMING OPTIONS - OUTPUT

MPT2-RT-S
2-1/2" Square Canopy



MPT2-RT-R
2-1/2" Round Canopy



HI
3000K
White LED
HI-2*
3000K
White LED
WD†
3000-
1800K
Warm Dim
LED
WD-2†
2800-
2200K
Warm Dim
LED
*For use
with 10°
optic only.
Available
in low and
standard
outputs only.
†Available
in standard
output only

6
*Nominal
dimension
(in
inches).
Actual
overall
length
is 1/4"
greater.

WH
White

SA
Satin Aluminum

OB
Oil-Rubbed Bronze

BK
Black

10*
10° Very
Narrow
Spot
15
15° Narrow
Spot
25
25°
Narrow
Flood
40
40°
Flood
*For use
with HI-2
LED only

HEX
Hex-cell louver

NSP
Narrow softening lens

NFL
Medium softening lens

FL
Wide softening lens

WFL
Extra wide softening lens

LS
Linear spread lens

CF24
2400K color filtering lens

CF27
2700K color filtering lens

CF35
3500K color filtering lens

LU1R-M2
Lutron Remote
Mounted Hi-Lume
Forward-Phase 1%
Dimming
LU2R-M2
Lutron Remote
Mounted Hi-Lume
1% EcoSystem
Dimming

700
Low output
1000
Standard output
1000-WD
Standard
output – warm
dimming
1400*
High output
*Not available
w/ LU2R-M2
dimming option

One field interchangeable optic included standard. Up to three optical accessories can be accommodated.

Warranty All No. 8 Lighting products are by a 5 year limited warranty. For specific warranty details and limitations, see 8lighting.com/resources-downloads

OPTICAL OPTIONS AND ACCESSORY PERFORMANCE SUMMARY

| OPTICAL OPTIONS | BEAM ENHANCING LENS (OPTIONAL)* | | | | |
|-------------------------|---------------------------------|-------|------|-------|----------|
| | + NSP | + NFL | + FL | + WFL | + LS |
| 10° Very Narrow Spot | 14° | 27° | 46° | 71° | 14 x 52° |
| 15° Spot | 20° | 27° | 42° | 61° | 19 x 47° |
| 25° Narrow Flood | 27° | 34° | 47° | 67° | 26 x 52° |
| 40° Flood | 41° | 42° | 56° | 68° | 36 x 57° |
| <i>Lumen Multiplier</i> | 0.93 | 0.87 | 0.88 | 0.82 | 0.89 |

*Beam enhancing lens used in combination with 10°, 15°, 25°, or 40° optic to achieve desired beam spread

MPT2-RT PERFORMANCE SUMMARY

| LED | Output | CCT | CRI | Delivered Lumens | System Wattage | Delivered LPW | R1 | R2 | R3 | R4 | R5 | R6 | R7 | R8 | R9 | R10 | R11 | R12 | R13 | R14 |
|------|---------|-----------|-----|------------------|----------------|---------------|----|----|-----|----|----|----|----|----|----|-----|-----|-----|-----|-----|
| HI-2 | 700 | 3000 | 93+ | 840 | 9.7 | 87 | 94 | 96 | 98 | 94 | 94 | 96 | 93 | 83 | 62 | 91 | 95 | 83 | 94 | 98 |
| HI-2 | 1000 | 3000 | 93+ | 1088 | 13.9 | 78 | 94 | 96 | 98 | 94 | 94 | 96 | 93 | 83 | 62 | 91 | 95 | 83 | 94 | 98 |
| HI | 700 | 3000 | 92+ | 549-634 | 9.3 | 59-64 | 94 | 97 | 99 | 94 | 93 | 97 | 93 | 83 | 61 | 92 | 95 | 83 | 95 | 99 |
| HI | 1000 | 3000 | 92+ | 770-890 | 14.5 | 53-62 | 93 | 97 | 100 | 93 | 93 | 97 | 92 | 82 | 59 | 92 | 95 | 83 | 94 | 99 |
| HI | 1400 | 3000 | 92+ | 952-1108 | 20.7 | 46-54 | 93 | 97 | 99 | 92 | 93 | 97 | 91 | 80 | 56 | 93 | 93 | 83 | 94 | 100 |
| WD | 1000-WD | 3000-1800 | 97+ | 754-875 | 15.0 | 51-59 | 99 | 99 | 96 | 99 | 99 | 97 | 98 | 96 | 90 | 96 | 97 | 83 | 100 | 97 |
| WD-2 | 1000-WD | 2800-2200 | 95+ | 731-849 | 15.0 | 49-57 | 98 | 97 | 96 | 96 | 99 | 93 | 90 | 86 | 74 | 96 | 96 | 87 | 99 | 99 |

MPT2-RT SERIES CONE OF LIGHT DIAGRAMS

